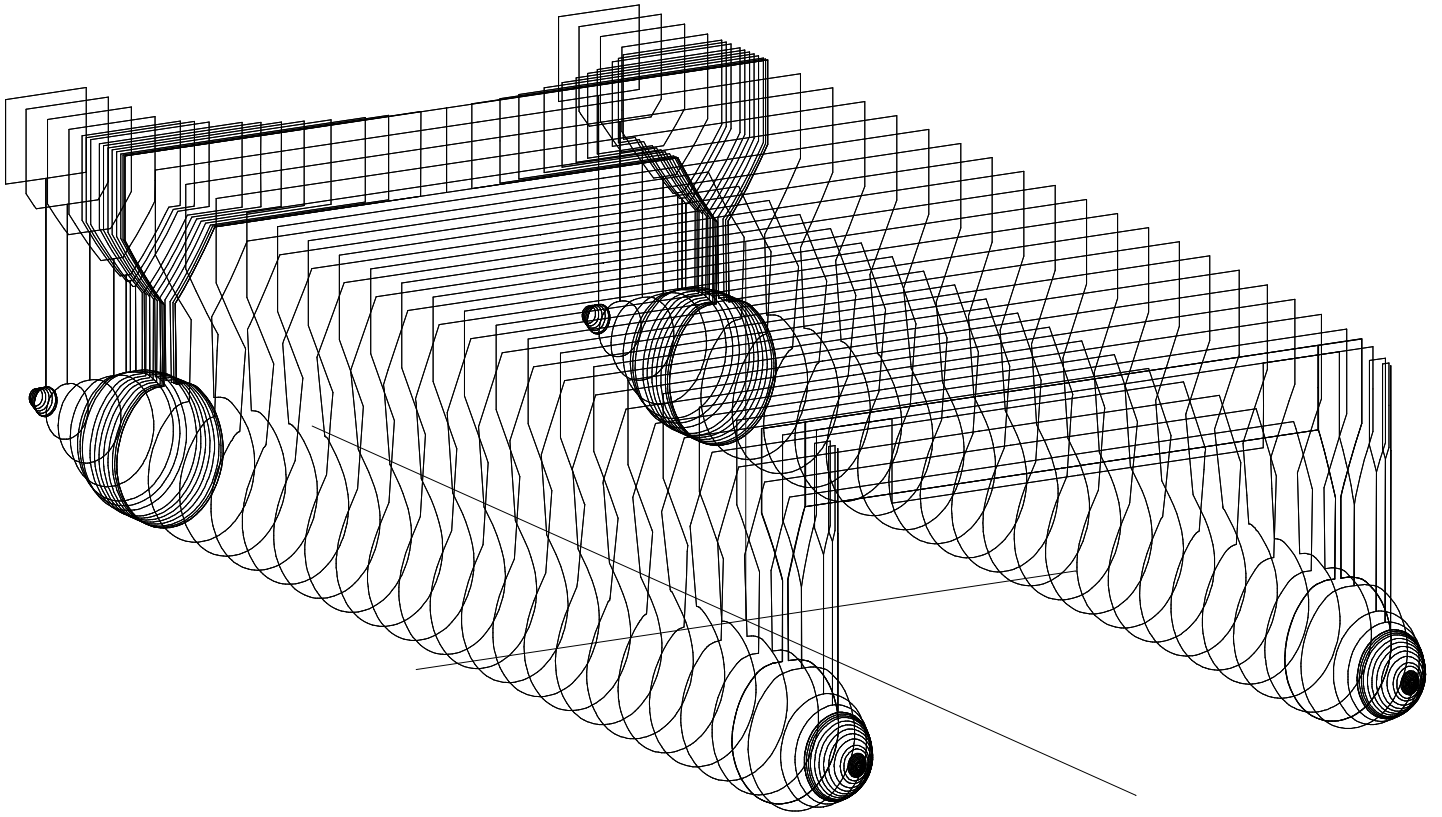


SWATH



12-05-27 22:32:42
GHS 12.00

QUICK RUN NO CHECK
SWATH

Page 1
PART_I

SWATH2 HYDROS CC

HYDROSTATIC PROPERTIES								
No Trim, No Heel, VCG = 0.000								
LCF Draft	Displacement Weight(MT)	Buoyancy-Ctr. LCB VCB		Weight/ CM	LCF	Moment/ CM trim	KML	KMT
UNDEF.	0.00							
0.200	21.20	0.064f	0.120	1.60	0.112f	3.45	1360.08	893.516
0.400	59.87	0.072f	0.240	2.24	0.192f	5.07	709.16	440.823
0.600	109.28	0.037f	0.359	2.69	0.026a	6.16	471.98	295.001
0.800	167.05	0.004f	0.478	3.07	0.097a	7.29	365.09	220.566
1.000	231.93	0.042a	0.597	3.40	0.165a	8.30	299.59	175.337
1.200	302.55	0.066a	0.715	3.67	0.190a	9.17	253.71	146.305
1.400	378.31	0.104a	0.832	3.90	0.291a	10.01	221.47	124.510
1.600	458.30	0.144a	0.949	4.09	0.342a	10.70	195.30	108.465
1.800	541.77	0.184a	1.065	4.25	0.452a	11.35	175.23	95.475
2.000	628.09	0.230a	1.180	4.37	0.516a	11.83	157.61	85.123
2.200	716.37	0.272a	1.293	4.45	0.608a	12.24	142.98	76.420
2.400	805.92	0.311a	1.405	4.49	0.638a	12.44	129.17	68.804
2.600	895.84	0.344a	1.515	4.49	0.636a	12.46	116.36	62.121
2.800	985.26	0.369a	1.623	4.45	0.602a	12.29	104.34	56.154
3.000	1,073.36	0.385a	1.728	4.36	0.502a	11.91	92.87	50.749
3.200	1,159.46	0.392a	1.830	4.25	0.458a	11.53	83.21	46.014
3.400	1,243.12	0.394a	1.929	4.11	0.386a	11.00	74.03	41.766
3.600	1,323.51	0.388a	2.024	3.94	0.278a	10.33	65.29	37.789
3.800	1,400.41	0.382a	2.116	3.75	0.270a	9.70	57.95	34.321
4.000	1,473.14	0.373a	2.204	3.52	0.104a	8.80	49.99	30.810
4.200	1,541.20	0.363a	2.287	3.29	0.178a	8.09	43.93	27.834
4.400	1,604.42	0.357a	2.366	3.03	0.179a	7.25	37.83	24.945
4.600	1,661.89	0.348a	2.440	2.74	0.102a	6.29	31.67	22.027
4.800	1,713.92	0.339a	2.508	2.45	0.116f	5.44	26.55	19.555
5.000	1,759.53	0.326a	2.570	2.05	0.235f	4.05	19.27	16.424
5.200	1,795.37	0.318a	2.621	1.73	0.009f	2.80	13.03	14.165
5.400	1,829.81	0.312a	2.671	1.71	0.006f	2.78	12.73	13.834
5.600	1,863.74	0.306a	2.723	1.68	0.003f	2.77	12.45	13.522
5.800	1,897.17	0.301a	2.775	1.66	0.000	2.76	12.18	13.227
6.000	1,930.11	0.296a	2.828	1.63	0.002a	2.75	11.93	12.948
6.200	1,962.55	0.291a	2.882	1.61	0.005a	2.74	11.68	12.683
6.400	1,994.49	0.286a	2.937	1.58	0.008a	2.73	11.46	12.432
6.600	2,025.93	0.282a	2.992	1.56	0.012a	2.72	11.24	12.192
6.800	2,056.88	0.278a	3.048	1.53	0.016a	2.71	11.03	11.965
7.000	2,087.33	0.274a	3.104	1.51	0.020a	2.70	10.84	11.748
7.200	2,117.28	0.271a	3.161	1.49	0.024a	2.70	10.65	11.542
7.400	2,146.73	0.267a	3.217	1.46	0.027a	2.69	10.47	11.345
7.600	2,175.68	0.264a	3.274	1.43	0.025a	2.68	10.30	11.155
7.800	2,204.13	0.261a	3.331	1.41	0.024a	2.67	10.13	10.970
8.000	2,232.32	0.259a	3.389	1.46	0.160a	2.82	10.59	11.188
8.200	2,263.06	0.260a	3.453	1.62	0.501a	3.25	12.02	12.014
8.400	2,297.18	0.266a	3.525	1.79	0.864a	3.73	13.58	12.843
8.600	2,334.63	0.278a	3.604	1.96	1.092a	4.17	14.94	13.619
8.800	2,375.88	0.299a	3.693	2.15	1.589a	4.80	16.90	14.492
9.000	2,420.56	0.324a	3.789	2.32	1.775a	5.28	18.25	15.226
9.200	2,468.62	0.354a	3.892	2.49	1.920a	5.76	19.53	15.923

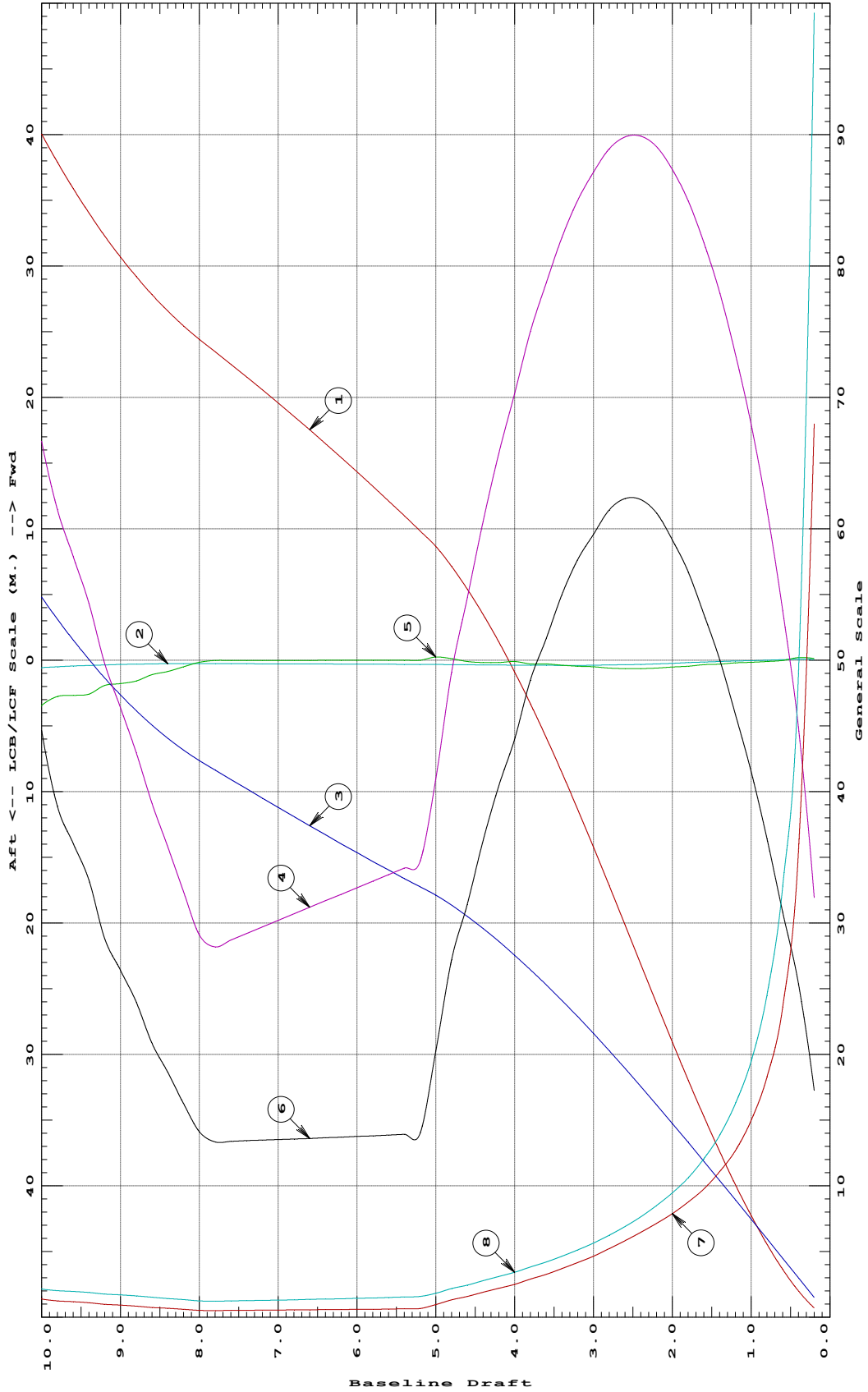
12-05-27 22:32:42
GHS 12.00

QUICK RUN NO CHECK
SWATH

Page 3
PART_I

9.400	2,521.08	0.398a	4.004	2.72	2.573a	6.65	22.07	16.876
9.600	2,577.19	0.446a	4.124	2.89	2.685a	7.21	23.41	17.564
9.800	2,636.86	0.498a	4.249	3.07	2.768a	7.78	24.67	18.202
10.000	2,701.42	0.565a	4.385	3.33	3.438a	8.93	27.66	19.173
Distances in METERS.			Specific Gravity = 1.025.			Moment in M.-MT.		
Draft is from Baseline.			Trim is per 83.67M.					

HYDROSTATIC PROPERTIES at LEVEL TRIM



- ① Displacement 1=30 MT
- ② LCB (use top scale)
- ③ VCB (KB) 1=.08 M.
- ④ Immersion 1=.05 MT/CM
- ④ WPA 1=4.88 Sq.M.
- ⑤ LCF (use top scale)
- ⑥ Moment/Trim 1=.2 M.-MT/CM
- ⑦ KML 1=20 M.
- ⑧ KMT 1=9 M.

Specific Gravity = 1.025 Assumed KG = 0.00 M.
Trim is per 83.668 M. "K" = Baseline

12-05-27 22:32:42
GHS 12.00

QUICK RUN NO CHECK
SWATH

Page 5
PART_I

comp {_pname}\{_cname} /form /wet /depth: {_draft1} {_draft2} ... {_draftN}
Error: No such component under HULL.

12-05-27 22:32:42
GHS 12.00

QUICK RUN NO CHECK
SWATH

Page 6
PART_I

12-05-27 22:32:42
GHS 12.00

QUICK RUN NO CHECK
SWATH

Page 7
PART_I

12-05-27 22:32:42
GHS 12.00

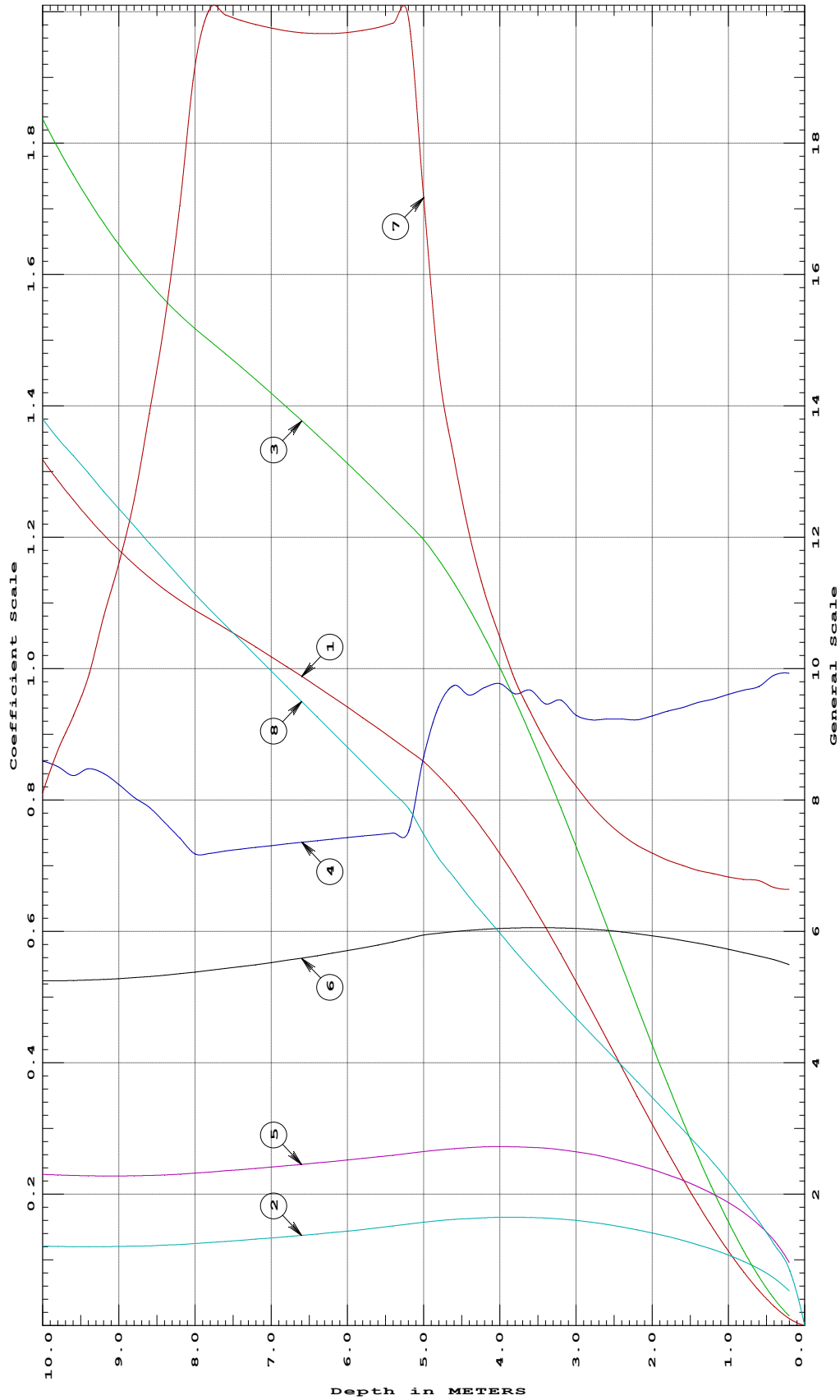
QUICK RUN NO CHECK
SWATH

Page 8
PART_I

CURVES OF FORM								
HULL Component of Part HULL								
Trim: zero Heel: zero								
Ref Pt	Volume	Block	Displ/	WaterPI	MaxSect	Prismatic	Coefs	Wetted
Depth	(Cu M.)	Coef	Length	Coef	Coef	Long	Vert	Surface
0.000	0.000					0.0		
0.200	20.68	0.052	1.0	0.993	0.096	0.549	0.664	170.5
0.400	58.40	0.072	2.8	0.990	0.130	0.557	0.667	247.2
0.600	106.6	0.086	5.2	0.973	0.153	0.563	0.677	317.1
0.800	163.0	0.098	8.0	0.967	0.172	0.568	0.679	378.7
1.000	226.3	0.107	11.0	0.961	0.187	0.573	0.683	439.0
1.200	295.2	0.116	14.4	0.954	0.200	0.578	0.688	495.9
1.400	369.1	0.123	18.0	0.948	0.211	0.582	0.693	547.1
1.600	447.1	0.130	21.8	0.941	0.221	0.586	0.700	597.0
1.800	528.6	0.136	25.8	0.935	0.230	0.590	0.708	645.7
2.000	612.8	0.141	29.9	0.928	0.237	0.593	0.719	694.6
2.200	698.9	0.146	34.1	0.922	0.244	0.597	0.731	743.1
2.400	786.3	0.150	38.4	0.923	0.251	0.599	0.747	791.1
2.600	874.0	0.154	42.6	0.923	0.256	0.601	0.767	839.1
2.800	961.2	0.157	46.9	0.922	0.261	0.603	0.792	887.4
3.000	1047	0.160	51.1	0.929	0.265	0.605	0.821	936.0
3.200	1131	0.162	55.2	0.952	0.268	0.605	0.853	985.9
3.400	1213	0.163	59.2	0.947	0.270	0.606	0.890	1036.2
3.600	1291	0.164	63.0	0.967	0.271	0.606	0.934	1087.7
3.800	1366	0.165	66.6	0.962	0.272	0.605	0.983	1139.5
4.000	1437	0.165	70.1	0.977	0.272	0.604	1.048	1195.3
4.200	1504	0.164	73.3	0.971	0.272	0.603	1.116	1249.1
4.400	1565	0.163	76.4	0.960	0.271	0.602	1.204	1304.4
4.600	1621	0.162	79.1	0.975	0.269	0.600	1.320	1363.8
4.800	1672	0.160	81.6	0.943	0.267	0.597	1.455	1421.7
5.000	1717	0.157	83.7	0.865	0.265	0.594	1.717	1495.9
5.200	1752	0.154	85.4	0.752	0.262	0.589	1.991	1575.4
5.400	1785	0.152	87.1	0.749	0.259	0.584	1.983	1621.8
5.600	1818	0.149	88.7	0.747	0.257	0.579	1.976	1668.2
5.800	1851	0.146	90.3	0.745	0.254	0.575	1.971	1714.6
6.000	1883	0.144	91.9	0.743	0.252	0.571	1.968	1761.0
6.200	1915	0.142	93.4	0.741	0.250	0.567	1.967	1807.3
6.400	1946	0.139	94.9	0.738	0.248	0.563	1.967	1853.7
6.600	1977	0.137	96.4	0.736	0.245	0.559	1.968	1900.0
6.800	2007	0.135	97.9	0.733	0.243	0.556	1.971	1946.4
7.000	2036	0.133	99.3	0.731	0.241	0.553	1.975	1992.8
7.200	2066	0.131	100.8	0.728	0.239	0.549	1.980	2039.3
7.400	2094	0.130	102.2	0.725	0.237	0.546	1.987	2085.7
7.600	2123	0.128	103.5	0.722	0.236	0.543	1.995	2132.1
7.800	2150	0.126	104.9	0.719	0.234	0.541	2.006	2178.5
8.000	2178	0.125	106.2	0.718	0.232	0.538	1.917	2226.9
8.200	2208	0.123	107.7	0.742	0.230	0.536	1.705	2278.2
8.400	2241	0.122	109.3	0.766	0.229	0.533	1.528	2330.2
8.600	2278	0.121	111.1	0.789	0.228	0.531	1.388	2381.6
8.800	2318	0.121	113.1	0.804	0.228	0.530	1.257	2435.7
9.000	2362	0.120	115.2	0.824	0.228	0.528	1.160	2487.4

9.200	2408	0.120	117.5	0.840	0.228	0.527	1.079	2539.1
9.400	2460	0.120	120.0	0.848	0.228	0.526	0.987	2596.5
9.600	2514	0.120	122.7	0.837	0.229	0.525	0.927	2648.7
9.800	2573	0.120	125.5	0.851	0.229	0.525	0.876	2700.9
10.000	2636	0.121	128.6	0.859	0.230	0.525	0.811	2761.1
Distances in METERS.			Length is 83.67					
HULL Reference Point:			Long.= 0.000	Trans.= 0.000		Vert.= 0.000		

CURVES OF FORM
HULL Component of Part HULL



- | | | |
|--------------------------|-------------------------|------------------------------|
| 1 Volume 1=200 CU.M. | 4 Waterplane Coef. | 6 Long. Prismatic |
| 2 Block Coef. | 5 Maximum Section Coef. | 7 Vertical Prismatic |
| 3 Displ/Length Ratio 1=7 | | 8 Wetted Surface 1=200 SQ.M. |

Depth is relative to HULL Reference Point

CROSS CURVES OF STABILITY						
Showing righting arms in heel at VCG = 0.00						
Trim: zero at zero heel (trim righting arm held at zero)						
Displacement	Heel Angles in Degrees					
METRIC TONS	5.00s	10.00s	15.00s	20.00s	25.00s	30.00s

Not enough weight.

CROSS CURVES OF STABILITY						
Showing righting arms in heel at VCG = 0.00						
Trim: zero at zero heel (trim righting arm held at zero)						
Displacement	Heel Angles in Degrees					
METRIC TONS	5.00s	10.00s	15.00s	20.00s	25.00s	30.00s

Not enough weight.

CROSS CURVES OF STABILITY						
Showing righting arms in heel at VCG = 0.00						
Trim: zero at zero heel (trim righting arm held at zero)						
Displacement	Heel Angles in Degrees					
METRIC TONS	5.00s	10.00s	15.00s	20.00s	25.00s	30.00s

Not enough weight.

CROSS CURVES OF STABILITY

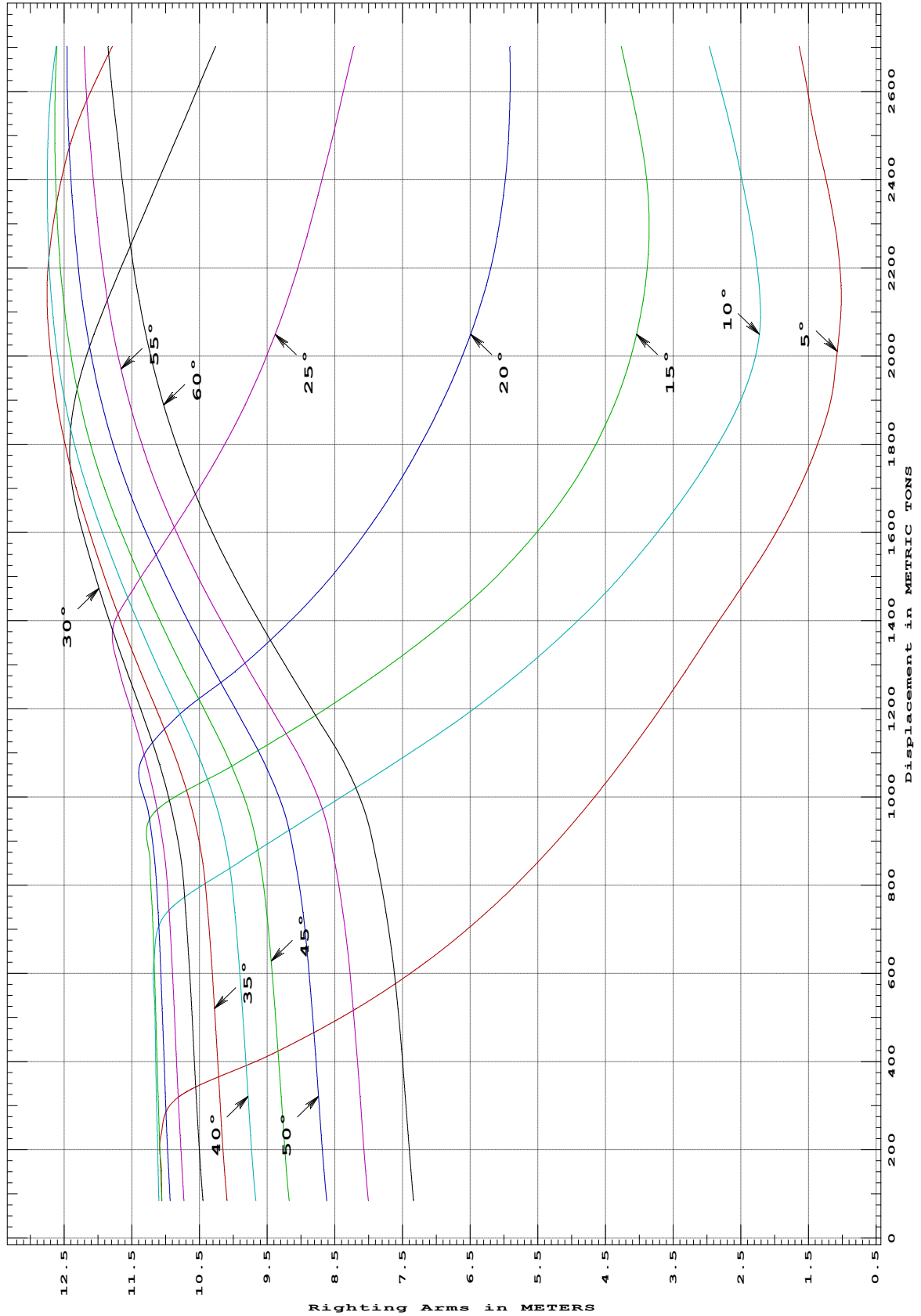
Showing righting arms in heel at VCG = 0.00

Trim: zero at zero heel (trim righting arm held at zero)

Displacement METRIC TONS	Heel Angles in Degrees					
	5.00s	10.00s	15.00s	20.00s	25.00s	30.00s
83.48	11.059s	11.099s	11.056s	10.932s	10.729s	10.448s
151.91	11.063s	11.110s	11.073s	10.955s	10.756s	10.480s
231.93	11.069s	11.122s	11.092s	10.979s	10.786s	10.513s
321.04	10.797s	11.135s	11.111s	11.004s	10.814s	10.546s
417.89	9.418s	11.148s	11.129s	11.027s	10.843s	10.579s
520.61	8.176s	11.160s	11.147s	11.052s	10.873s	10.615s
628.09	7.133s	11.174s	11.168s	11.079s	10.907s	10.654s
738.67	6.257s	10.979s	11.194s	11.112s	10.947s	10.701s
850.88	5.507s	9.923s	11.229s	11.158s	11.004s	10.768s
963.00	4.860s	8.780s	11.178s	11.250s	11.116s	10.898s
1,073.36	4.289s	7.653s	9.983s	11.380s	11.276s	11.088s
1,180.64	3.779s	6.613s	8.829s	10.838s	11.476s	11.324s
1,283.74	3.321s	5.753s	7.829s	9.977s	11.682s	11.569s
1,381.54	2.903s	5.034s	6.986s	9.274s	11.781s	11.791s
1,473.14	2.501s	4.438s	6.291s	8.701s	11.471s	11.984s
1,557.48	2.142s	3.957s	5.754s	8.248s	11.105s	12.148s
1,633.87	1.856s	3.562s	5.335s	7.889s	10.778s	12.283s
1,701.46	1.634s	3.245s	5.020s	7.601s	10.498s	12.379s
1,759.53	1.466s	2.997s	4.785s	7.375s	10.272s	12.414s
1,804.03	1.355s	2.822s	4.626s	7.214s	10.110s	12.415s
1,846.83	1.263s	2.668s	4.491s	7.067s	9.963s	12.394s
1,888.86	1.186s	2.533s	4.372s	6.932s	9.827s	12.355s
1,930.11	1.132s	2.421s	4.268s	6.807s	9.702s	12.299s
1,970.58	1.103s	2.334s	4.179s	6.692s	9.586s	12.230s
2,010.27	1.076s	2.269s	4.103s	6.587s	9.480s	12.148s
2,049.19	1.050s	2.226s	4.040s	6.493s	9.381s	12.058s
2,087.33	1.028s	2.208s	3.988s	6.406s	9.290s	11.963s
2,124.69	1.017s	2.213s	3.946s	6.329s	9.205s	11.865s
2,161.27	1.020s	2.232s	3.912s	6.261s	9.126s	11.767s
2,197.06	1.033s	2.256s	3.887s	6.201s	9.052s	11.669s
2,232.32	1.054s	2.286s	3.868s	6.149s	8.984s	11.570s
2,271.26	1.086s	2.324s	3.856s	6.098s	8.910s	11.461s
2,315.49	1.132s	2.373s	3.855s	6.050s	8.832s	11.338s
2,365.25	1.194s	2.435s	3.870s	6.006s	8.746s	11.198s
2,420.56	1.272s	2.510s	3.907s	5.968s	8.654s	11.043s
2,481.34	1.362s	2.596s	3.966s	5.938s	8.557s	10.873s
2,548.69	1.452s	2.701s	4.052s	5.918s	8.451s	10.686s
2,621.61	1.537s	2.826s	4.154s	5.909s	8.340s	10.483s
2,701.42	1.636s	2.966s	4.267s	5.913s	8.218s	10.263s

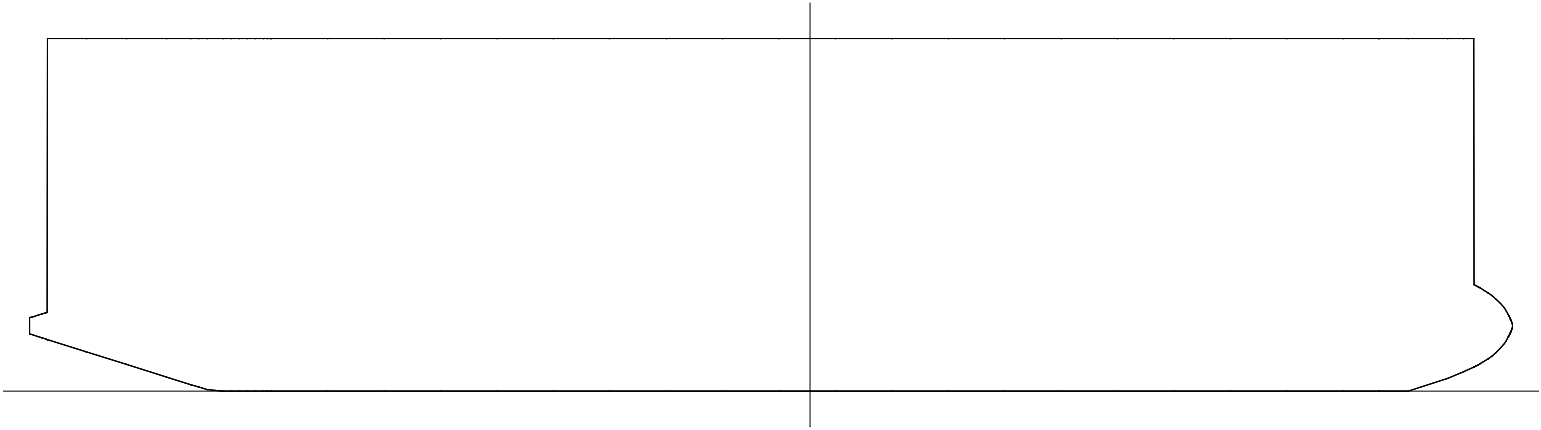
METRIC TONS	35.00s	40.00s	45.00s	50.00s	55.00s	60.00s
83.48	10.093s	9.667s	9.174s	8.619s	8.005s	7.338s
151.91	10.129s	9.706s	9.215s	8.659s	8.044s	7.375s
231.93	10.165s	9.743s	9.253s	8.698s	8.084s	7.416s
321.04	10.200s	9.781s	9.293s	8.740s	8.127s	7.460s
417.89	10.237s	9.822s	9.337s	8.786s	8.174s	7.509s
520.61	10.278s	9.867s	9.385s	8.837s	8.228s	7.565s
628.09	10.323s	9.917s	9.439s	8.895s	8.293s	7.641s
738.67	10.376s	9.976s	9.506s	8.971s	8.380s	7.743s
850.88	10.453s	10.063s	9.603s	9.079s	8.500s	7.876s
963.00	10.597s	10.218s	9.764s	9.242s	8.664s	8.047s
1,073.36	10.815s	10.463s	10.032s	9.530s	8.963s	8.348s
1,180.64	11.087s	10.768s	10.370s	9.901s	9.362s	8.767s
1,283.74	11.369s	11.084s	10.718s	10.272s	9.754s	9.173s
1,381.54	11.622s	11.368s	11.029s	10.609s	10.115s	9.553s
1,473.14	11.844s	11.616s	11.303s	10.907s	10.435s	9.890s
1,557.48	12.034s	11.832s	11.542s	11.167s	10.711s	10.176s
1,633.87	12.194s	12.014s	11.744s	11.384s	10.938s	10.410s
1,701.46	12.324s	12.163s	11.906s	11.559s	11.121s	10.600s
1,759.53	12.426s	12.276s	12.032s	11.691s	11.263s	10.748s
1,804.03	12.493s	12.353s	12.117s	11.785s	11.360s	10.852s
1,846.83	12.550s	12.420s	12.191s	11.865s	11.449s	10.943s
1,888.86	12.598s	12.478s	12.257s	11.938s	11.527s	11.028s
1,930.11	12.640s	12.528s	12.314s	12.003s	11.598s	11.104s
1,970.58	12.674s	12.571s	12.364s	12.060s	11.660s	11.173s
2,010.27	12.702s	12.607s	12.408s	12.111s	11.718s	11.235s
2,049.19	12.726s	12.638s	12.447s	12.156s	11.770s	11.292s
2,087.33	12.744s	12.664s	12.480s	12.196s	11.815s	11.344s
2,124.69	12.753s	12.685s	12.508s	12.231s	11.857s	11.390s
2,161.27	12.751s	12.703s	12.533s	12.262s	11.894s	11.432s
2,197.06	12.739s	12.717s	12.553s	12.289s	11.926s	11.469s
2,232.32	12.718s	12.727s	12.570s	12.312s	11.955s	11.503s
2,271.26	12.687s	12.736s	12.587s	12.336s	11.985s	11.539s
2,315.49	12.645s	12.743s	12.603s	12.360s	12.016s	11.576s
2,365.25	12.588s	12.747s	12.617s	12.384s	12.049s	11.616s
2,420.56	12.511s	12.747s	12.629s	12.407s	12.082s	11.657s
2,481.34	12.406s	12.740s	12.636s	12.427s	12.116s	11.701s
2,548.69	12.251s	12.721s	12.637s	12.445s	12.151s	11.752s
2,621.61	12.040s	12.682s	12.629s	12.456s	12.181s	11.803s
2,701.42	11.790s	12.617s	12.608s	12.456s	12.204s	11.851s
Distances in METERS.			Specific Gravity = 1.025.			

CROSS CURVES OF STABILITY with - Stbd Heel
at LEVEL TRIM (initial)



Specific Gravity = 1.025 Assumed KG = 0.00 M.
"K" = Baseline

SWATH



SWATH

