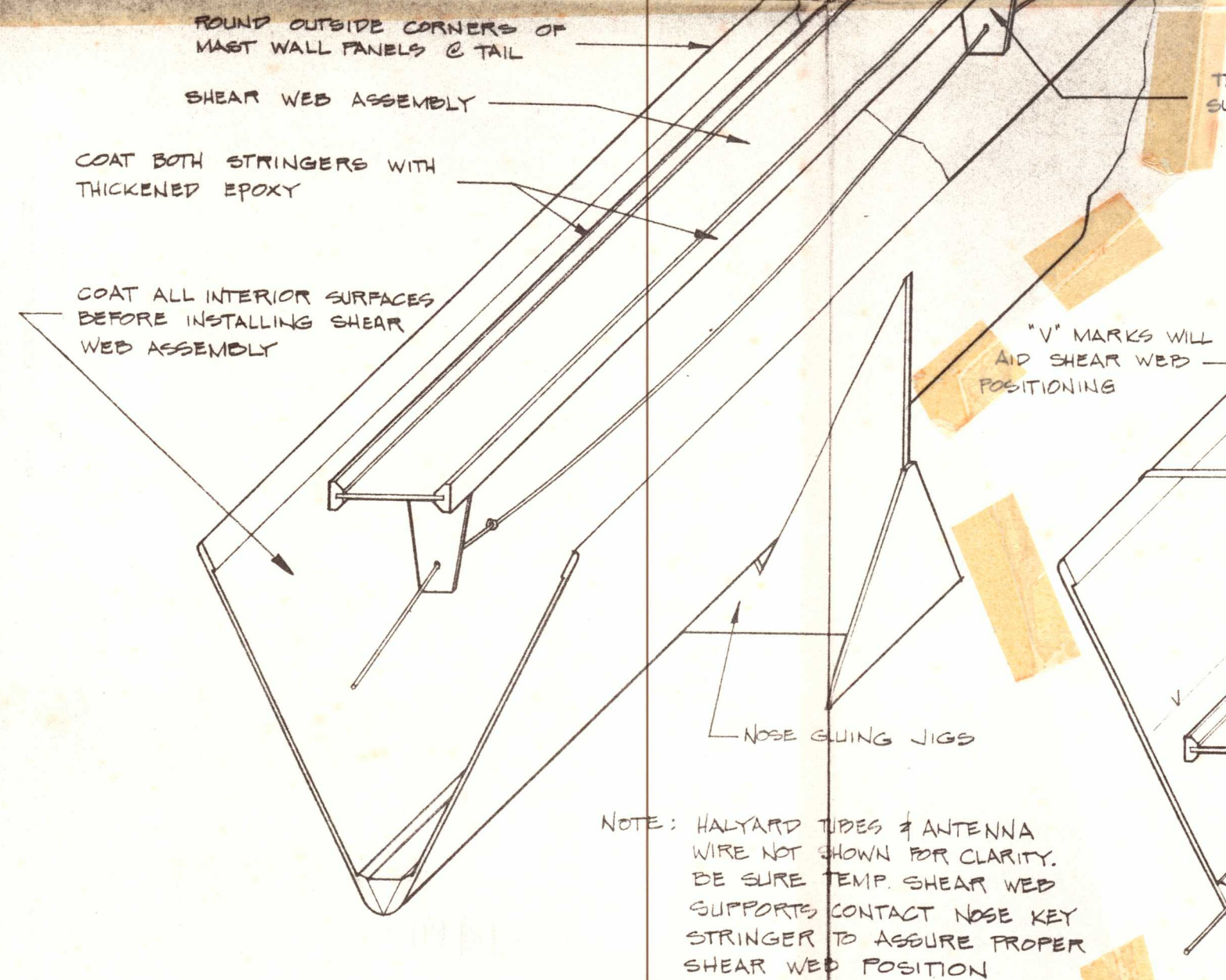
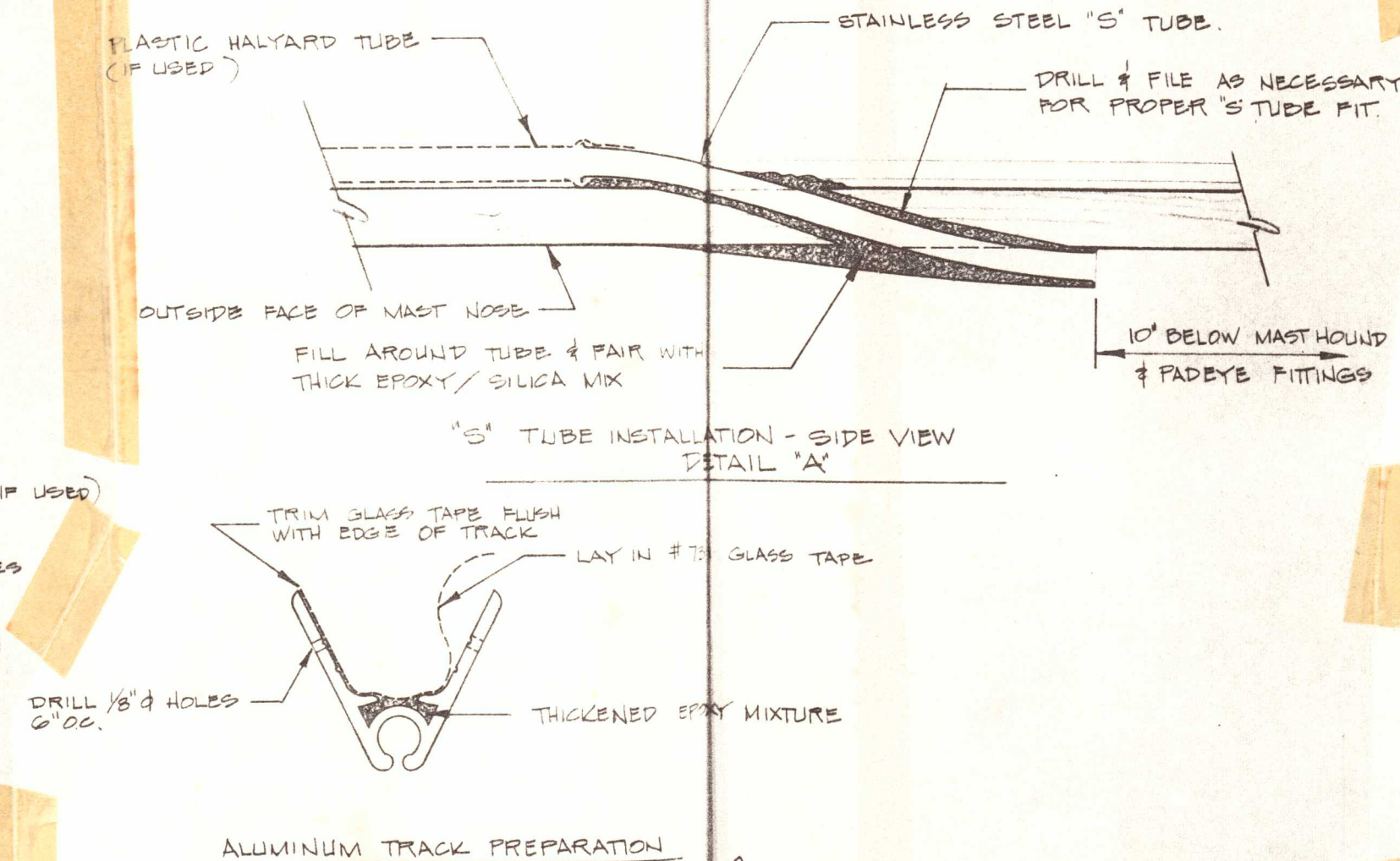


NOTE: INSTALL MASTHOUND, PAD EYE BLOCKING & SPREADER BLOCKING IF REQD BEFORE FORMING MAST.



FORMING SEQUENCE ①



ALUMINUM TRACK PREPARATION

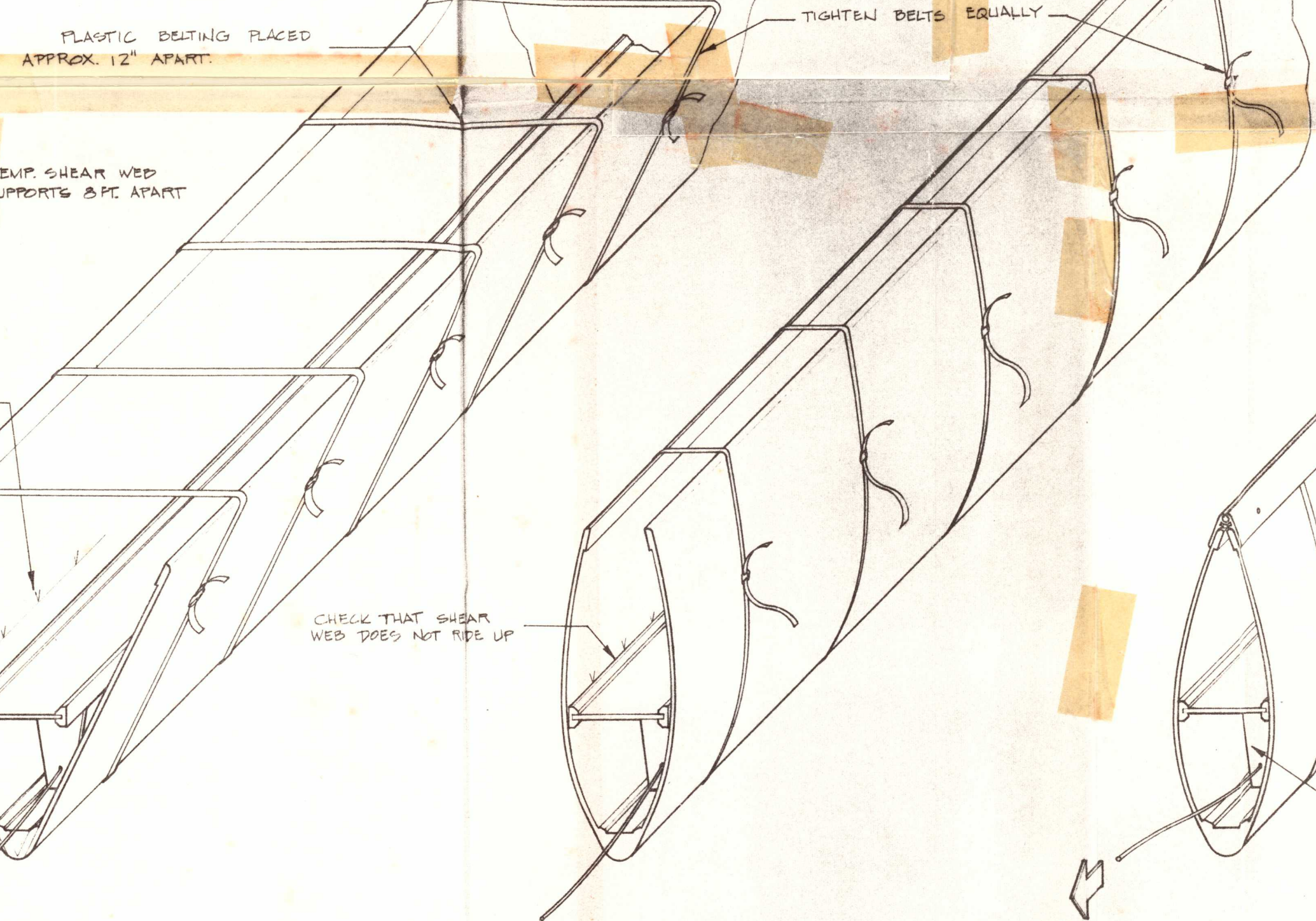
PLASTIC BELTING PLACED APPROX. 12" APART.

TEMP. SHEAR WEB SUPPORTS 3 FT. APART

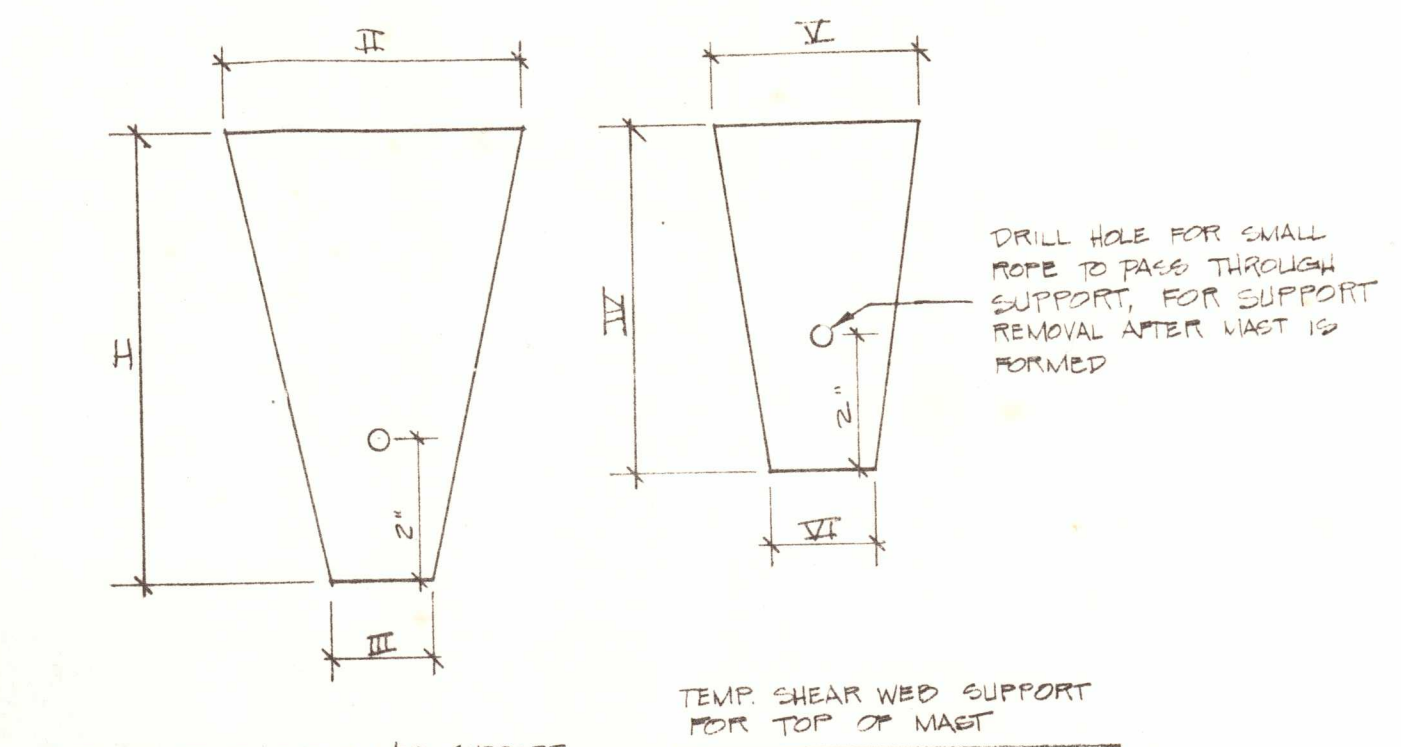
"V" MARKS WILL AID SHEAR WEB POSITIONING

CHECK THAT SHEAR WEB DOES NOT RIDE UP

②



③



TEMP. SHEAR WEB SUPPORT FOR TOP OF MAST

TEMP SHEAR WEB SUPPORT DIMENSIONS FOR VARIOUS MAST SECTIONS

SECTION	I	II	III	IV	V	VI
A'	6 1/2"	4 1/4"	1 1/4"	5"	3"	1 1/4"
B'	7 1/6"	5"	1 1/4"	5 1/2"	3 3/4"	1 1/4"
C'	B"	5"	1 1/2"	6 1/2"	3 3/4"	1 1/2"

LIGHTLY TIGHTEN TRACK DOWN. CUT AND REMOVE FORMING BELTS. WORK THICKENED EPOXY INTO VOIDS LEFT BY FORMING BELTS.

TIGHTEN TRACK BELTS DOWN COMPLETELY

RIGHT FOR TWISTS IN MAST AND STRAIGHTEN AS NECESSARY, BEFORE INSTALLING SCREWS

CLEAN UP ALL EXCESS EPOXY AROUND TRACK. ALLOW TO CURE FOR 24 HRS.

REMOVE TEMP. SHEAR WEB SUPPORTS

④