

SEACLIPPER 24

A trailerable, mini-cruising trimaran by renowned multihull designers Jim Brown and John Marples

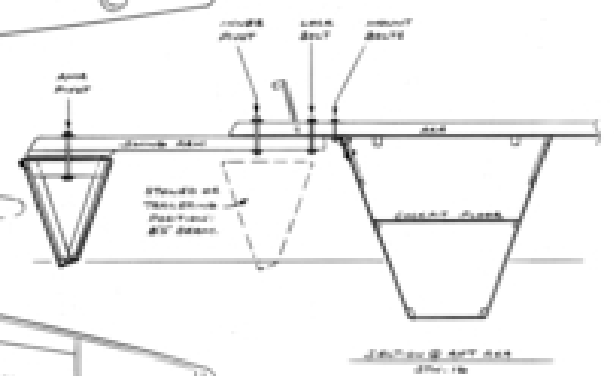
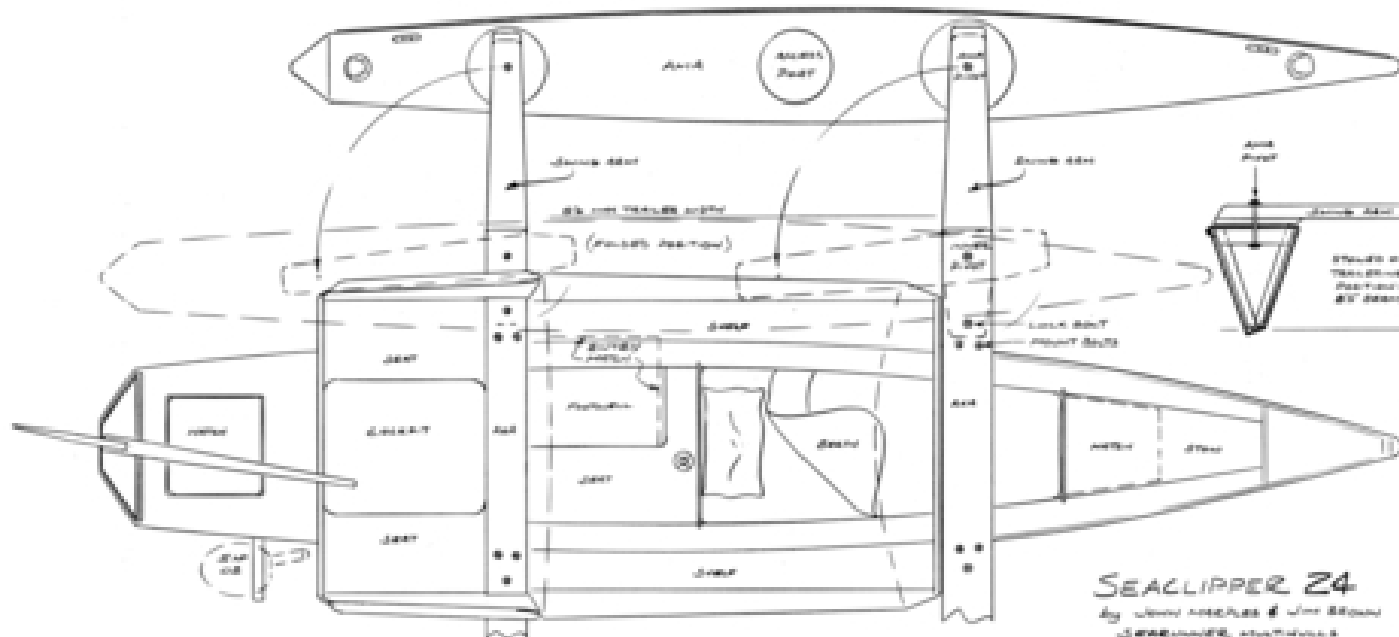
James W. Brown
Foster, VA 23056

STUDY PLANS

Compliments of Seaworthy Solutions, custom boatbuilders

Seaworthy Solutions
Scott Watts, LLC
870 Kings Estate Rd
St. Augustine, FL 32086
(904) 540-2291

www.SeaworthySolutions.net

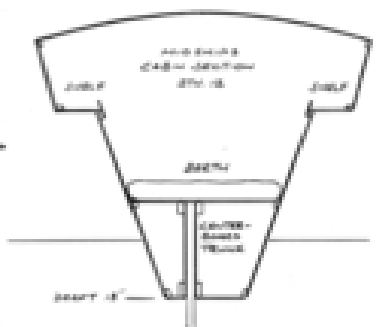
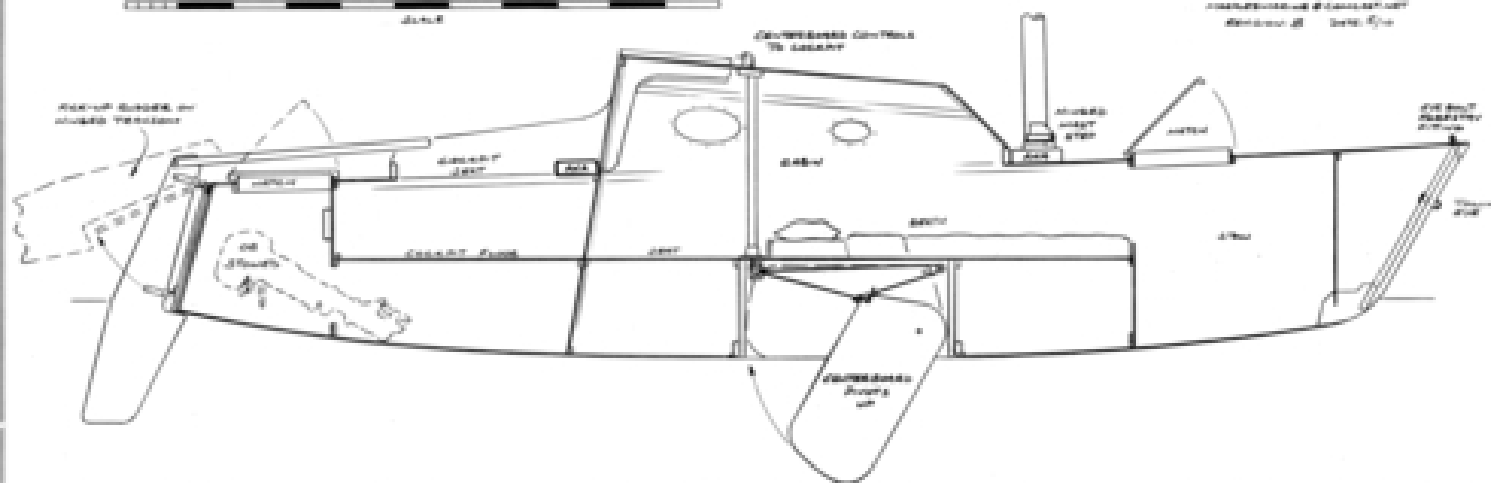


Specifications
 LOA - 24'0" Beam - 12'0" / 12'0" Height
 DECK - 12'0" x 12'0" Deck Area
 WEIGHT - 1000 LB (450 KG) HEIGHT - 600 LB
 SW. CAP - 270 LB HT - 12'0" x 12'0"

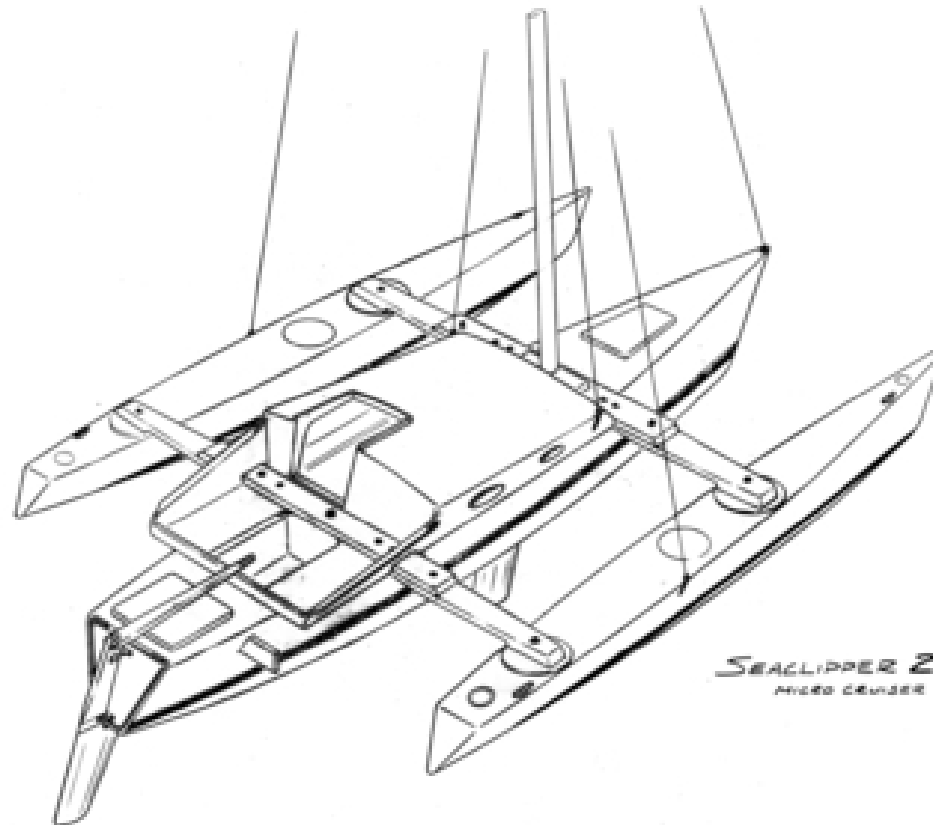
SEACLIPPER Z4
 by *www.seaworldsolutions.net*
 © 2008 SEAWORLD SOLUTIONS
 12345 MAIN ST. SUITE 100
 ANYTOWN, CA 90210 USA
 PHONE: (555) 555-5555
 WWW.SEAWORLDSOLUTIONS.NET



Notes
 LOW COST, EASY TO BUILD FROM COMMON MATERIALS, BACKPACK-STYLE CARRIER. PLUGS TO TRIMMER OR CUT WOOD. BUILT-IN, HIGH PROFILES DECK WITH HIGH STRENGTH MATERIAL.



REV. 10-2
 10-2
A



SEA CLIPPER 24
MID COUSE

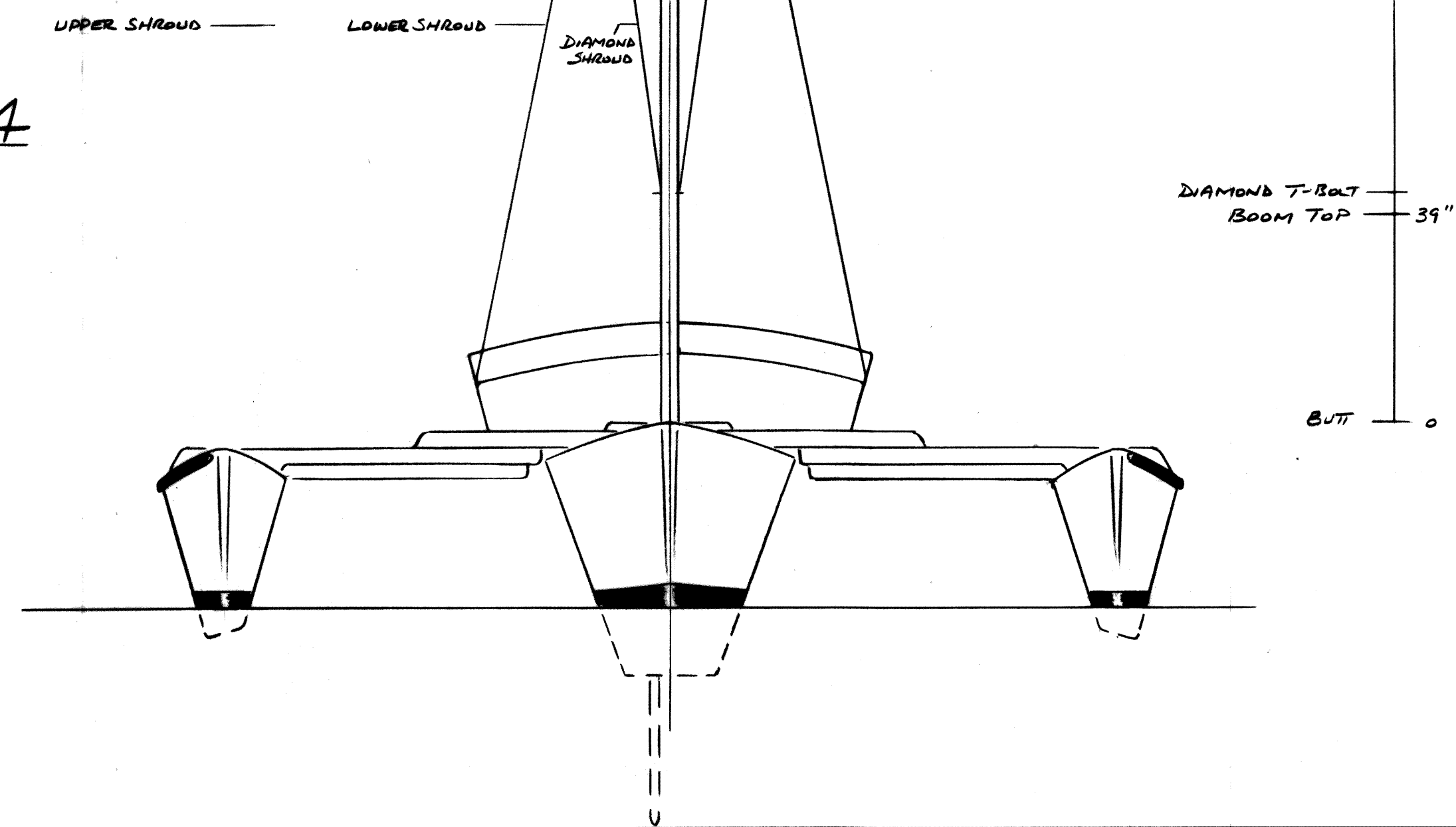
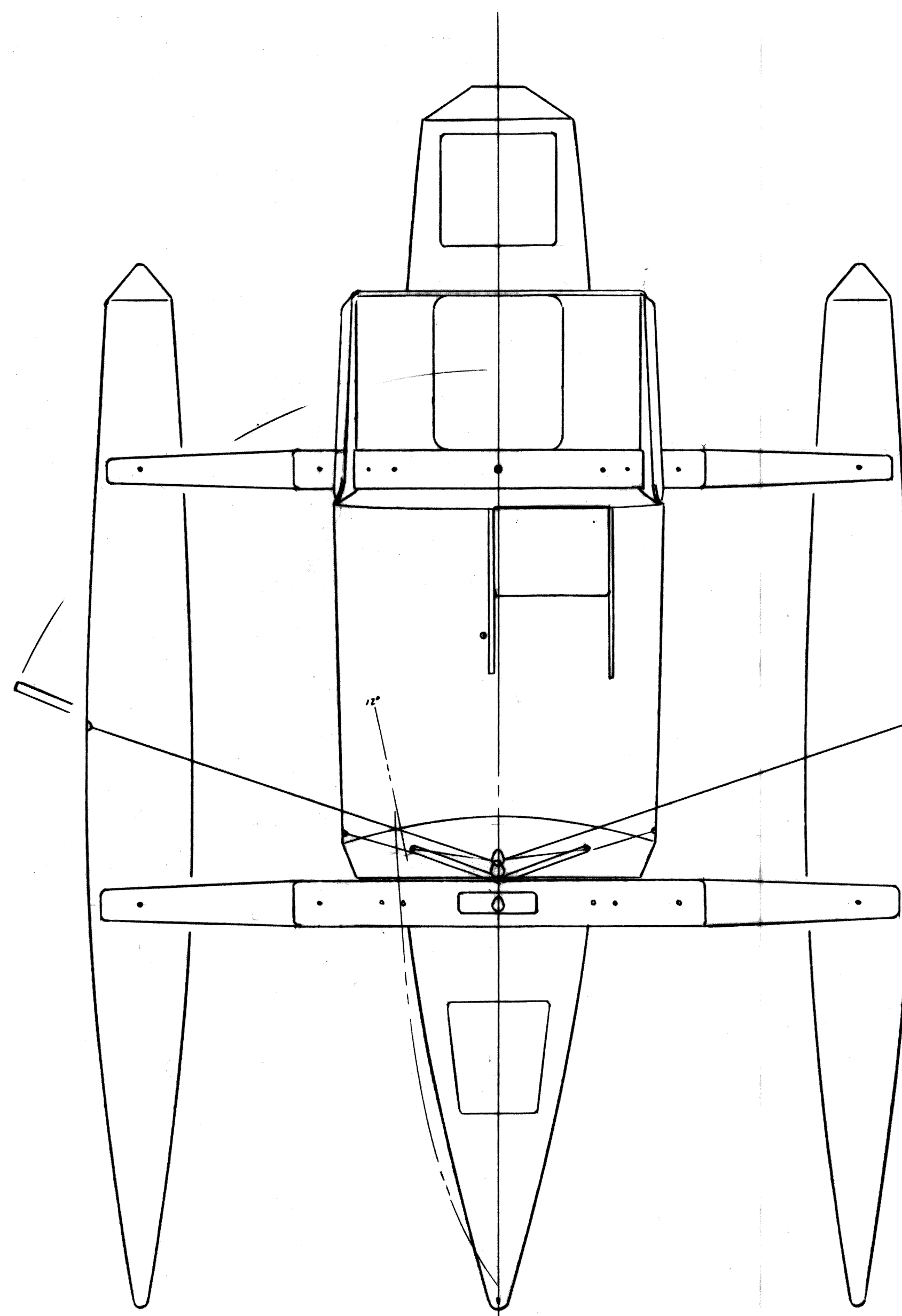
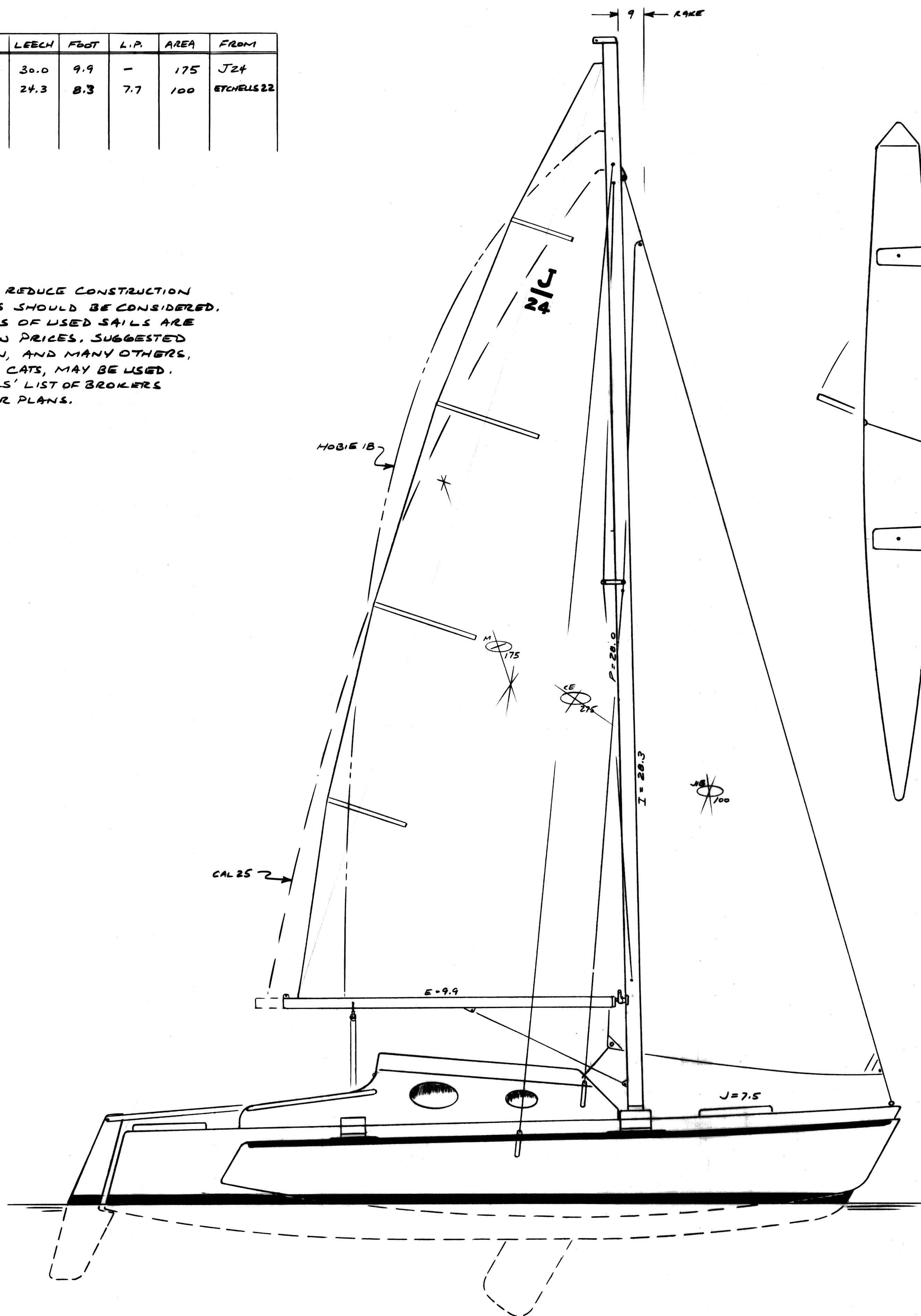
EXTRAORDINARY	100	100
EXTRAORDINARY	100	100
EXTRAORDINARY	100	100
EXTRAORDINARY	100	100

SAIL SCHEDULE

SAIL	WT.	LUFF	LEECH	FOOT	L.P.	AREA	FROM
MAIN	4.5	28.0	30.0	9.9	-	175	J24
JIB	4.5	25.0	24.3	8.3	7.7	100	ETCHELL22

USED SAILS

TO SIGNIFICANTLY REDUCE CONSTRUCTION COSTS, USED SAILS SHOULD BE CONSIDERED. LARGE INVENTORIES OF USED SAILS ARE AVAILABLE AT LOW PRICES. SUGGESTED SAILS ARE SHOWN, AND MANY OTHERS, ESPECIALLY BEACH CATS, MAY BE USED. SEE THE 'USED SAILS' LIST OF BROKERS PROVIDED WITH YOUR PLANS.

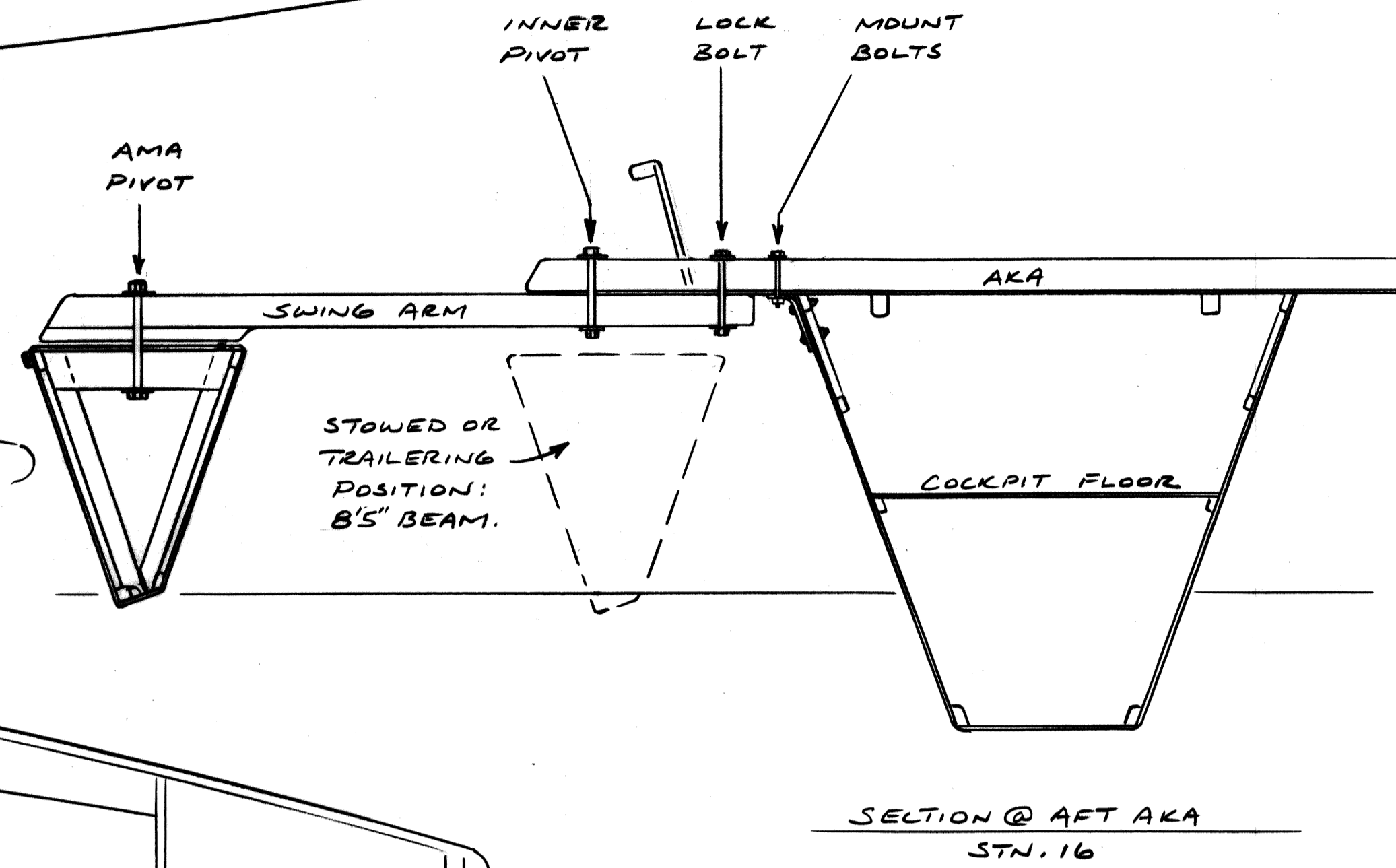
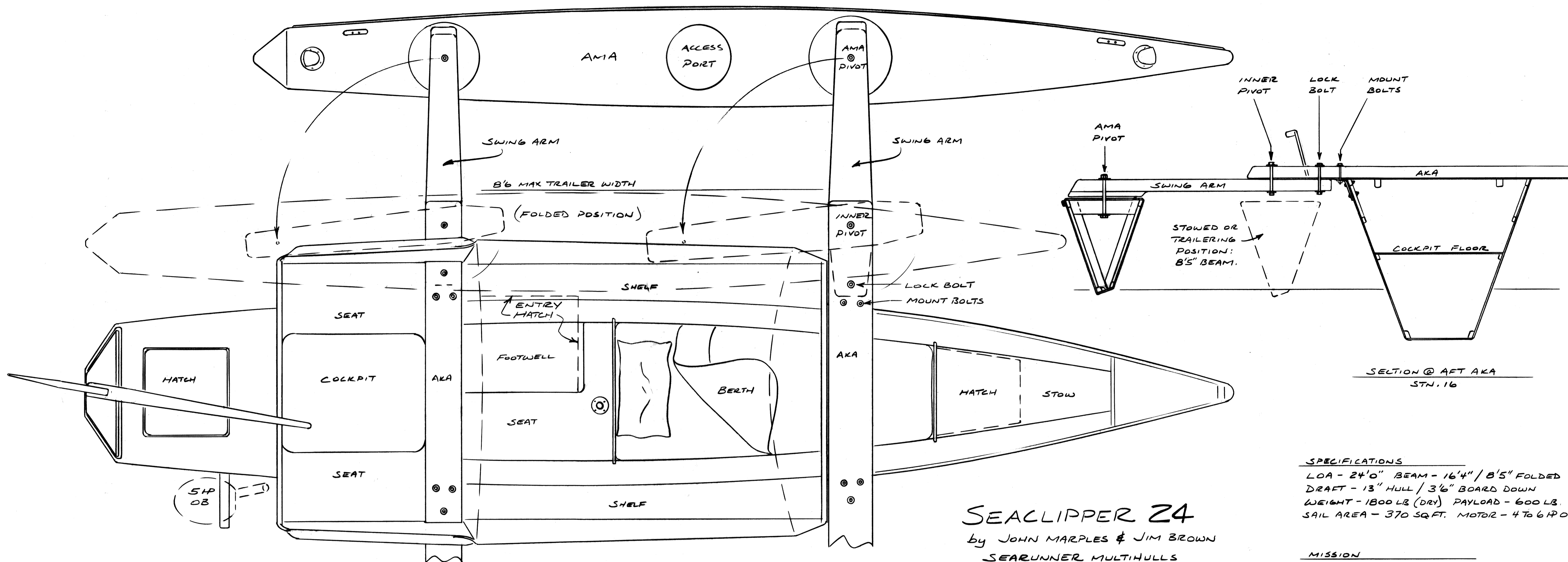


SEACLIPPER 24

By JOHN MARPLES
& JIM BROWN

SAIL NO. _____
BUILDER _____

SAIL PLAN		SCALE:	DESIGN
SEARUNNER MULTIHULLS 1724 HILLCREST AVENUE SONOMA, CA 95476 USA COPYRIGHT © 2010 J.R. MARPLES		1/2" = 1'	162
DR	JRM		SC 24 SHEET
REV	DATE		2
A	5/10		

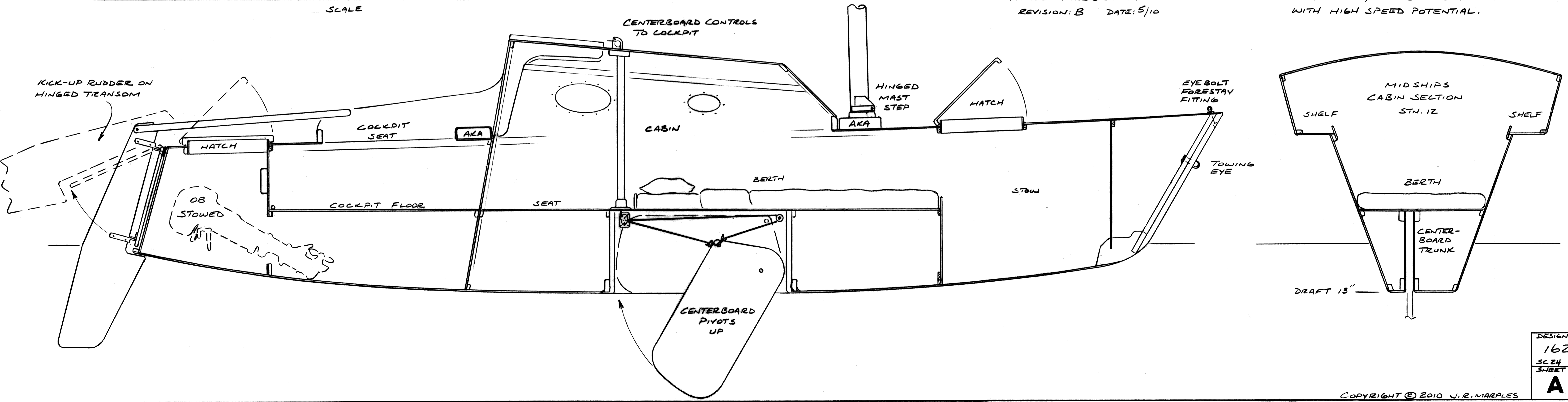
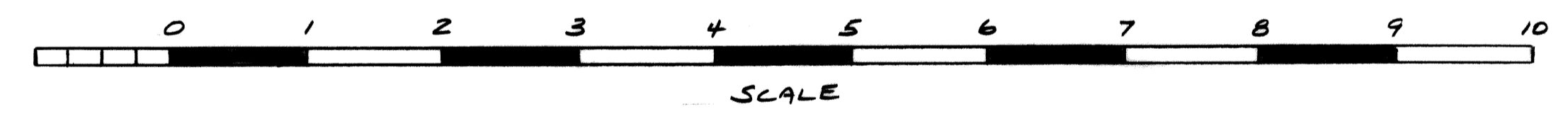


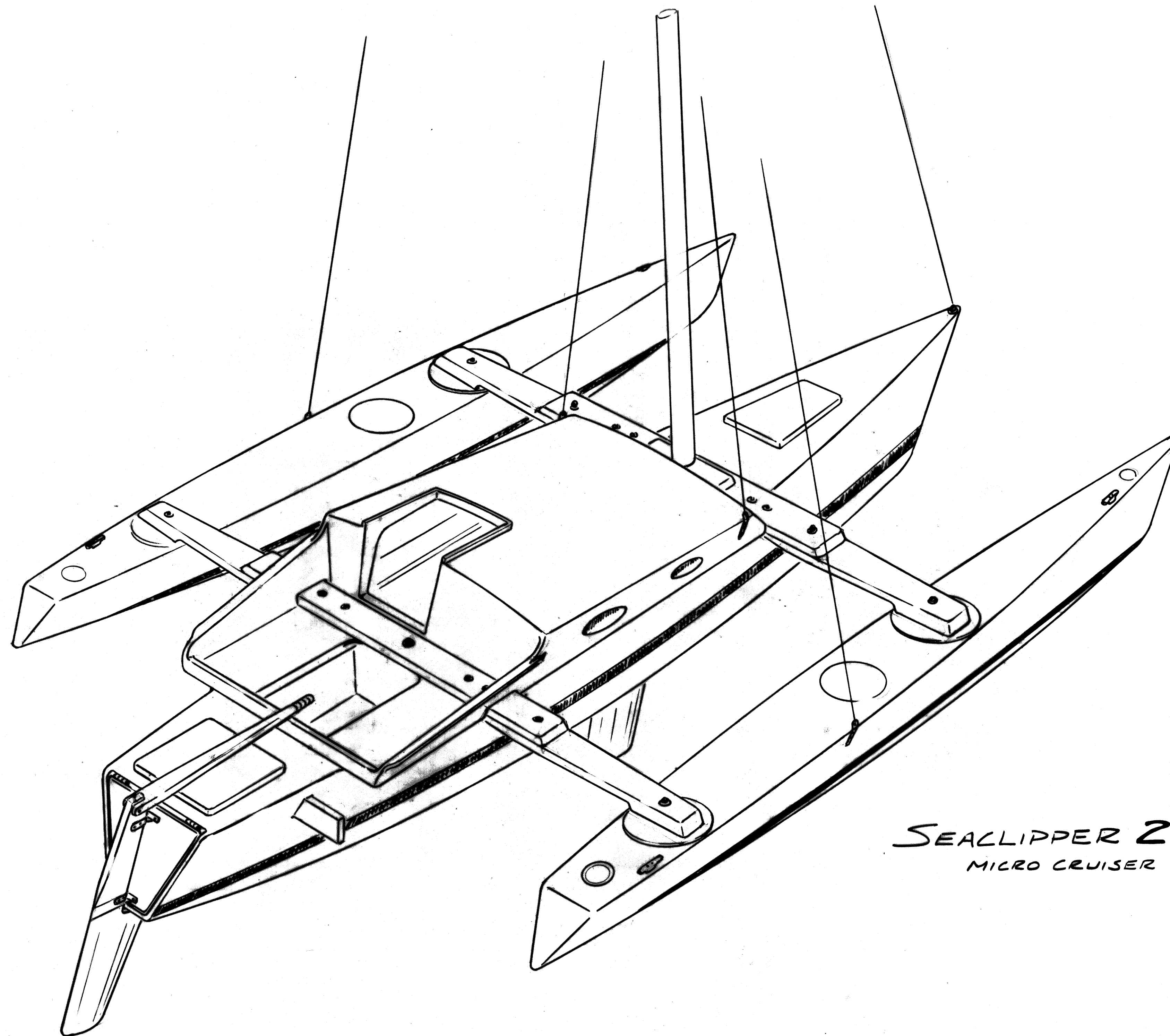
SEACLIPPER 24

by JOHN MARPLES & JIM BROWN
 SEARUNNER MULTIHULLS
 17240 HILLCREST AVENUE
 SONOMA, CA. 95476 USA
 PH/FAX: (707) 343-1378
 MARPLESMARINE@COMCAST.NET
 REVISION: B DATE: 5/10

SPECIFICATIONS
 LOA - 24'0" BEAM - 16'4" / 8'5" FOLDED
 DRAFT - 13" HULL / 3'6" BOARD DOWN
 WEIGHT - 1800 LB (DRY) PAYLOAD - 600 LB.
 SAIL AREA - 370 SQ.FT. MOTOR - 4 TO 6 HP OB.

MISSION
 LOW COST, EASY TO BUILD FROM COMMON MATERIALS, BACKPACK-STYLE CRUISER, FOLDS TO TRAILER OR SLIP WIDTH. BEACHABLE, HIGH STRENGTH DESIGN WITH HIGH SPEED POTENTIAL.





SEACLIPPER 24
MICRO CRUISER

EXTERIOR PERSPECTIVE	SCALE NONE	DESIGN 162
SEARUNNER MULTIHULLS 17240 HILLCREST AVENUE SONOMA, CA. 95476 USA COPYRIGHT © 2010 J.R. MARPLES	DR. JRM	SC 20 SHEET
	REV. DATE	B