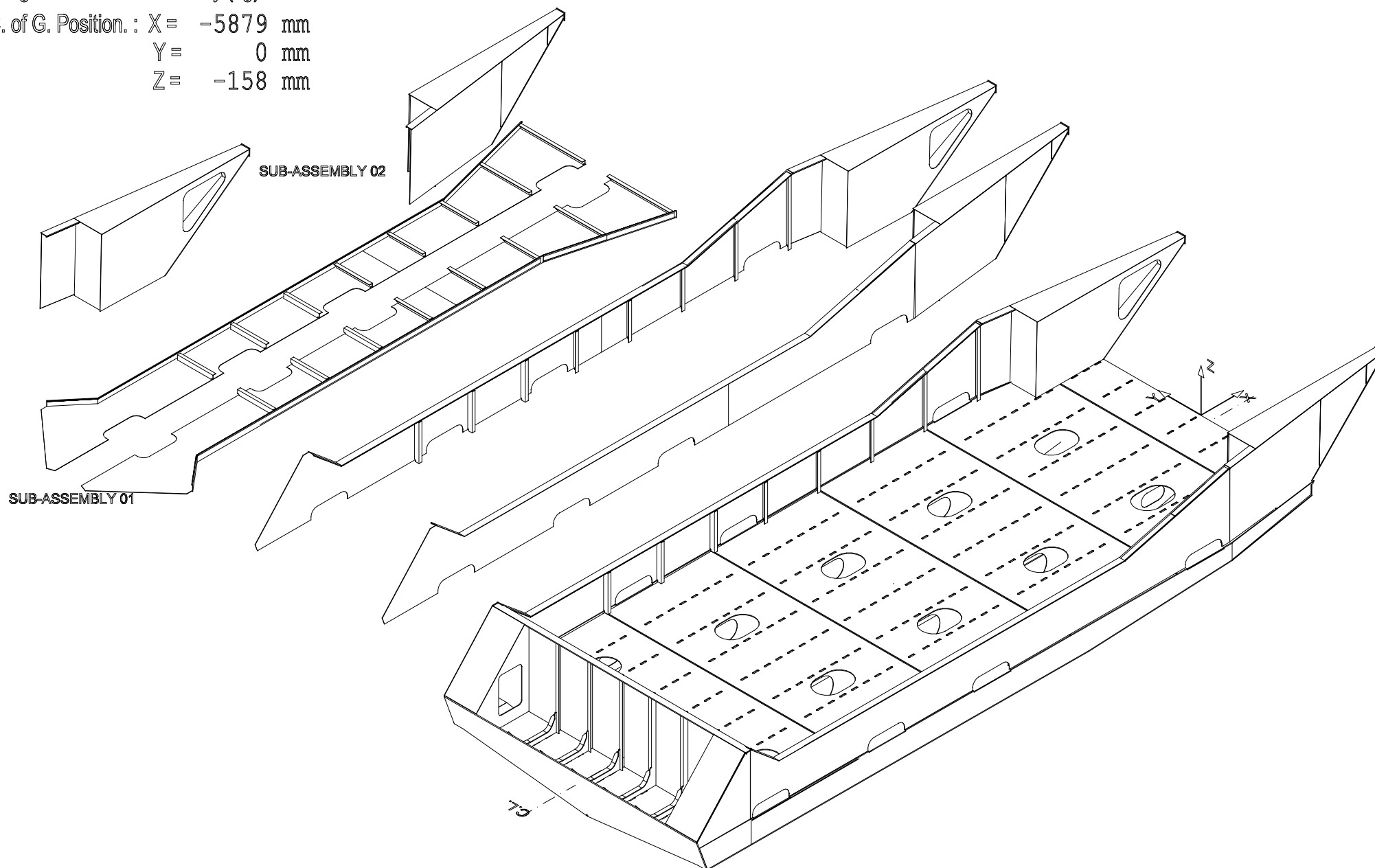


Weight of the Sub-Assembly (kg) : 3395

C. of G. Position. : X = -5879 mm

Y = 0 mm

Z = -158 mm



TAN s.l.

Date :  
22/10/2012

PROJECT  
LC40'

Panel007.- Bottom + Side shell + bulwark

EQUAL ASSEMBLIES 1  
SIMMETRICAL ASS. : 1

Main ASSEMBLY :  
001