

Owner : N/A
Builder : Prout Catamarans
Year Launched : 1996



Principal Particulars

Length Overall	9.3 metres
Length Waterline	7.9 metres
Beam (Moulded)	3.6 metres
Hull Draught	0.6 metres
Air Draft	5.2 metres

Deadweight

Passengers	12
Crew	2
Fuel	880 litres

Deadweight (Max)	1.9 tonnes
------------------	------------

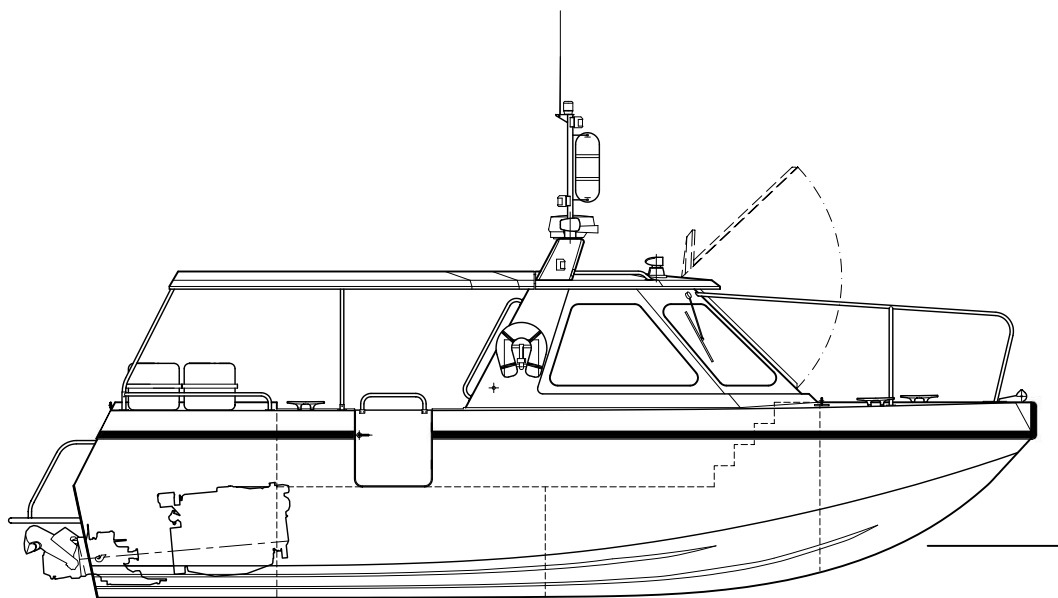
Propulsion Machinery

Main Engines	2 x Volvo AQU41DP Diesel Engines
Propulsors	2 x Volvo Dual Propeller Stern Drive Units

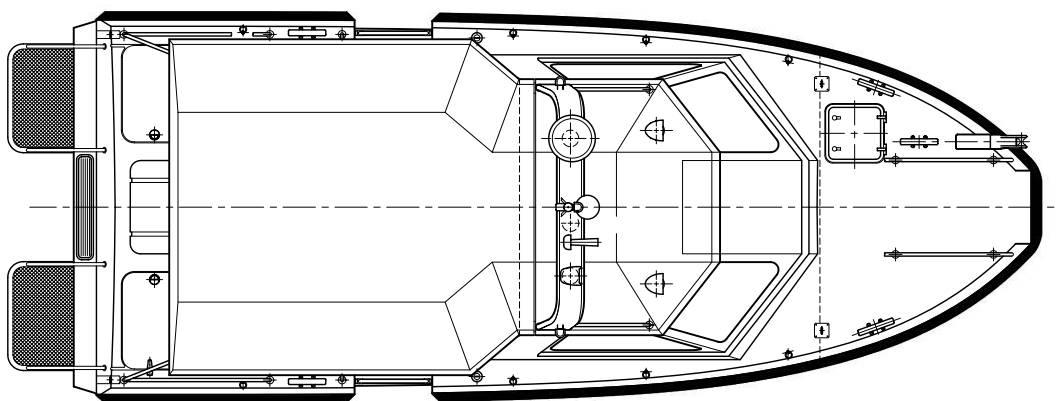
Performance and Range

Service Speed	27 knots
Speed (Max)	30 knots

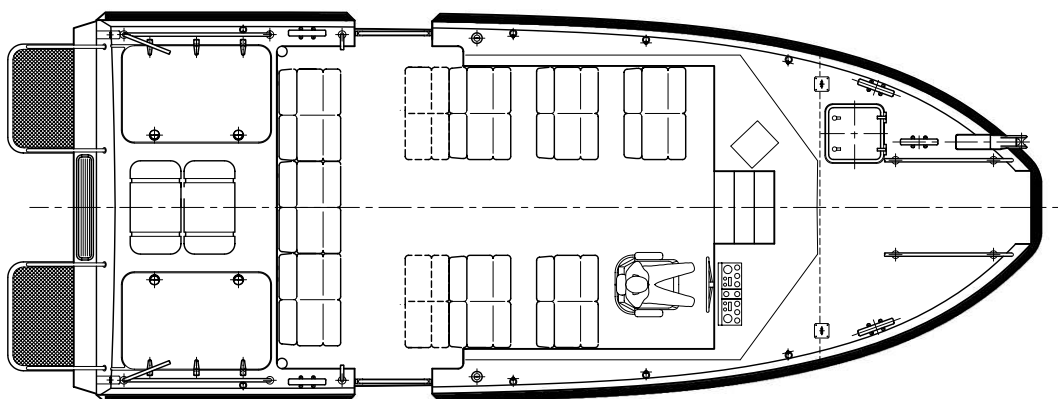




Outboard Profile



Deck View



Plan View

Tel: +44 2380 226655
 Fax: +44 2380 228855
 Email: admin@ngal.co.uk
 Website: www.ngal.co.uk

BMT Nigel Gee Ltd
 Shamrock Quay
 William Street
 Southampton
 SO14 5QL