

TRANSOM

12" TYP

BULKHEAD

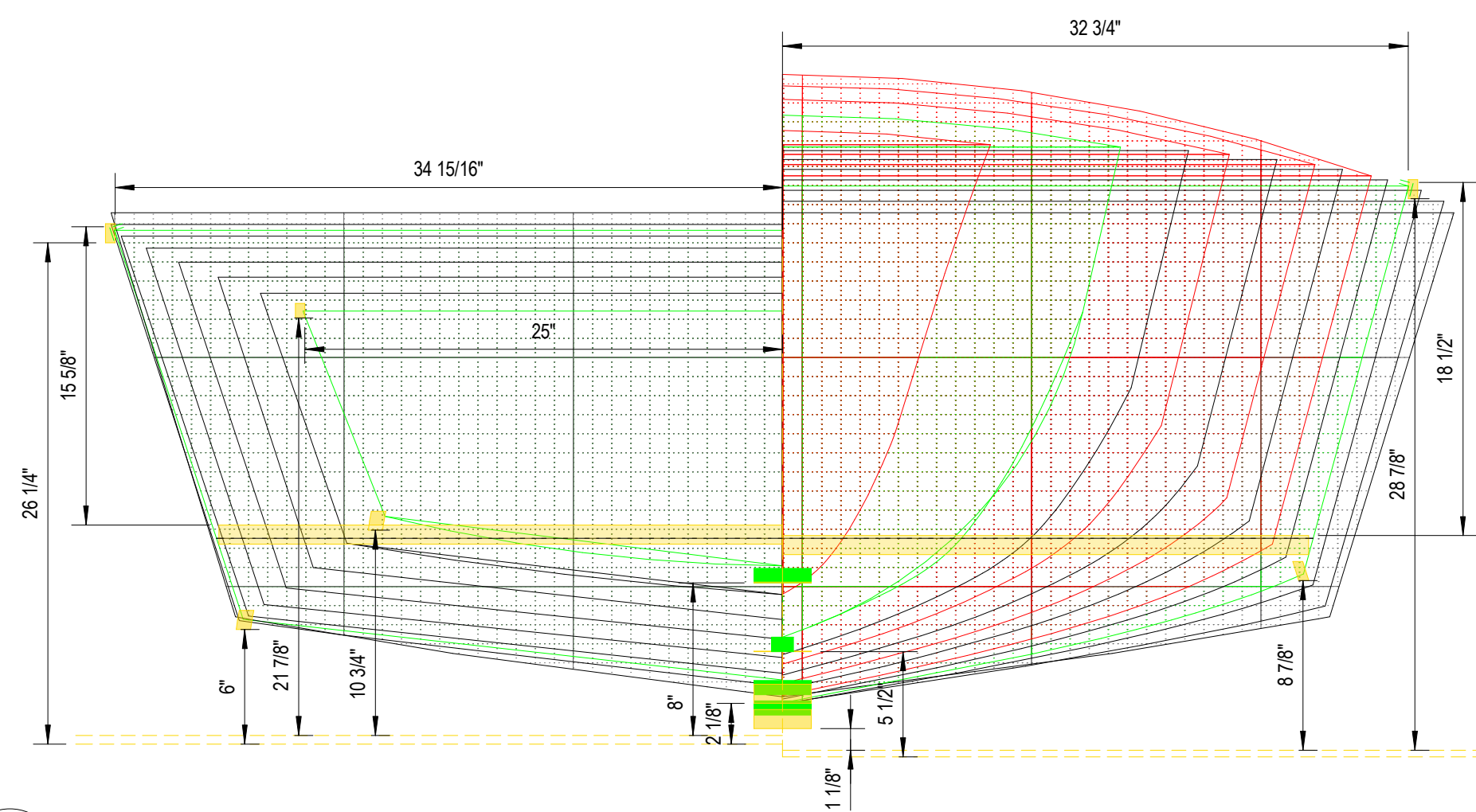
164"

192"

This technical drawing illustrates a cross-section of a ship's hull. The vertical axis is labeled 'TRANSOM' and the horizontal axis shows dimensions of 164" and 192". The hull structure is defined by a yellow shaded area, with internal structural lines in black, green, blue, and red. A 'BULKHEAD' is indicated on the right side. A dimension of 12" TYP is shown at the top left. The drawing includes various dashed and solid lines representing structural components and their connections.

Technical drawing of a boat hull cross-section, showing various dimensions and structural details. The drawing includes a transom at the left end and a bulkhead at the right end. The hull is shown in a side profile, with the deck and bottom lines clearly defined. The drawing is divided into several sections by vertical lines, each labeled with a dimension. The dimensions are given in feet and inches, with some values in parentheses indicating alternative or specific measurements. The drawing also shows the internal structure of the hull, including the keel and various stiffeners. The overall length of the hull is 47 feet, and the maximum width is 22 feet 1/4 inch. The drawing is a detailed technical representation of a boat hull, likely for construction or design purposes.

Section	Dimension (ft in)
Transom	10 1/8"
Section 1	8 7/8"
Section 2	11 1/2"
Section 3	23 3/16"
Section 4	7 9/16"
Section 5	10 3/16"
Section 6	6 1/4"
Section 7	24 1/8"
Section 8	25 1/16"
Section 9	25 7/8"
Section 10	26 9/16"
Section 11	26 15/16"
Section 12	27 1/4"
Section 13	27 15/16"
Section 14	28 5/8"
Section 15	29 1/16"
Section 16	29 1/16"
Section 17	29 15/16"
Section 18	30 9/16"
Section 19	31 1/8"
Section 20	31 11/16"
Section 21	32 1/16"
Bulkhead	6 1/4"




The image displays a comprehensive 3D exploded view of a boat's construction components, arranged in a linear sequence from left to right. The components include:

- Hull Planks:** A series of curved wooden planks of varying lengths, intended for the hull's skin.
- Ribs and Keel:** A set of curved ribs and a central keel piece, forming the boat's structural framework.
- Mast and Rigging:** A tall, slender mast, a horizontal boom, and various pulleys and blocks for the rigging system.
- Sails:** Two large, triangular sails with a red and white striped pattern, attached to the mast and boom.
- Technical Drawing:** A detailed 2D cross-section of the hull in the top left corner, showing the internal structure and dimensions. Key dimensions include a keel height of 80, a hull depth of 210, a width of 110, and a total length of 878.

[illegible]

Mirror 16 Plans	Original Mirror 3-View
-----------------	------------------------

DRAWN:SDC		CHECK:SDC	
VERIFY SCALE: Scales based on 24"x36" prints.			
			
PROJECT NO.		PAGE	
1			
SHEET NO.			
O-1			

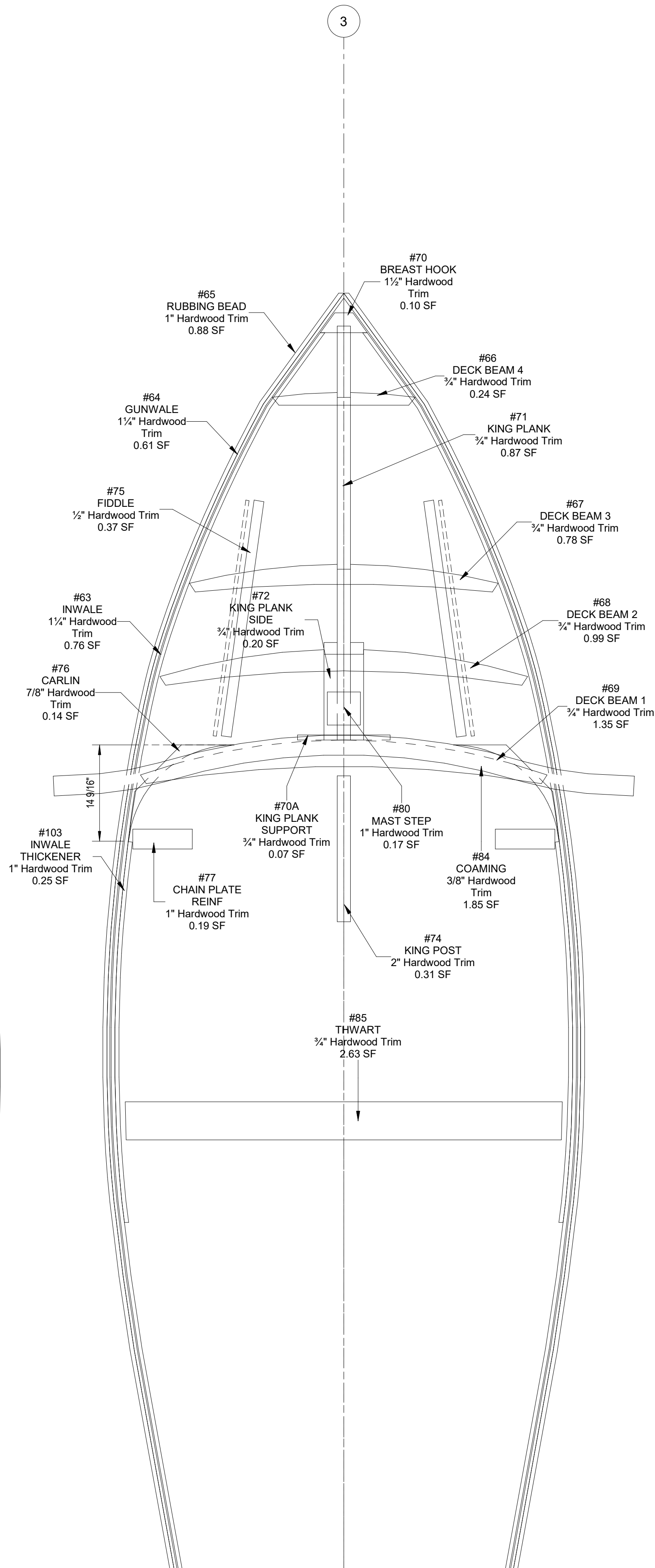
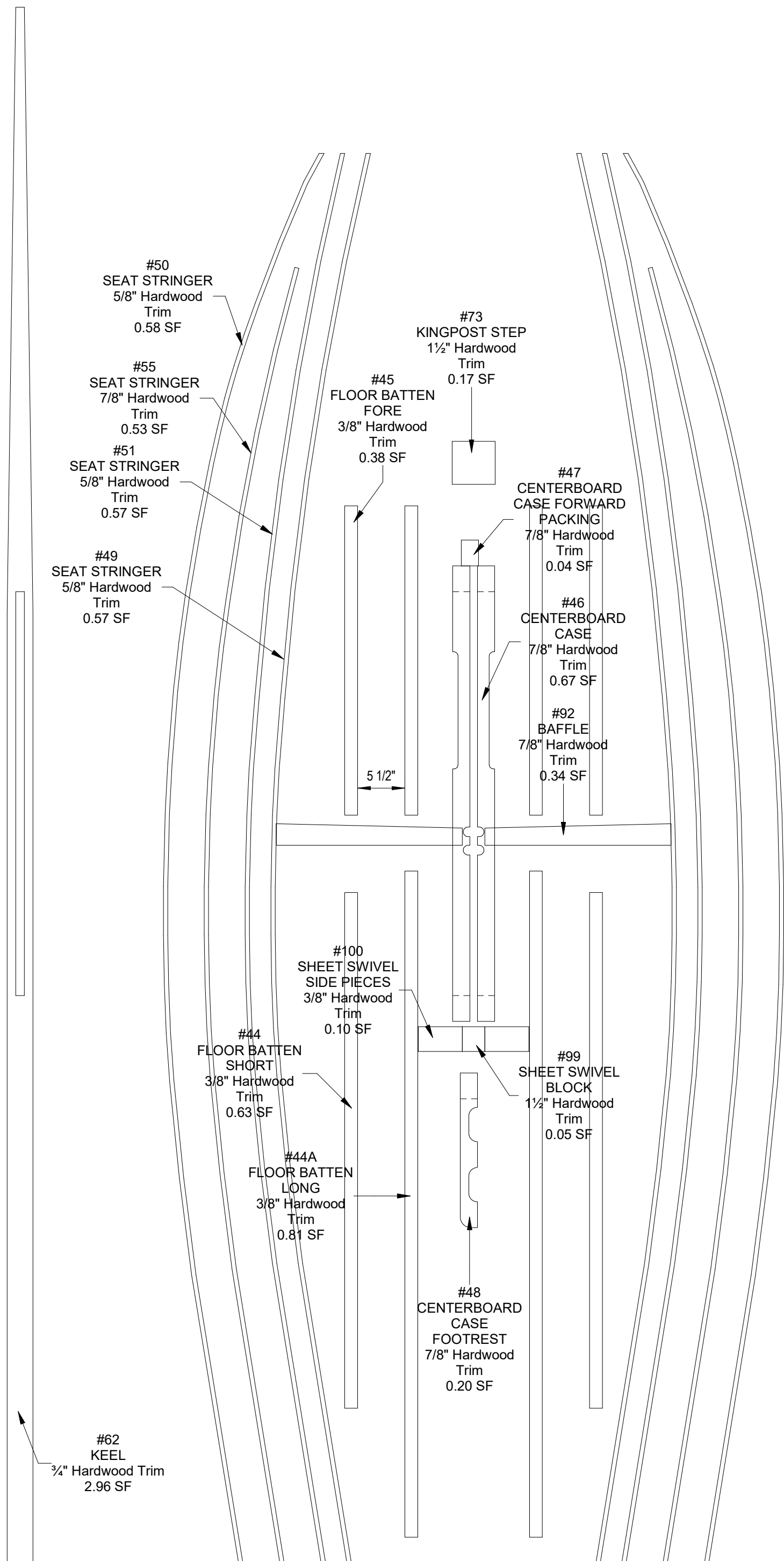
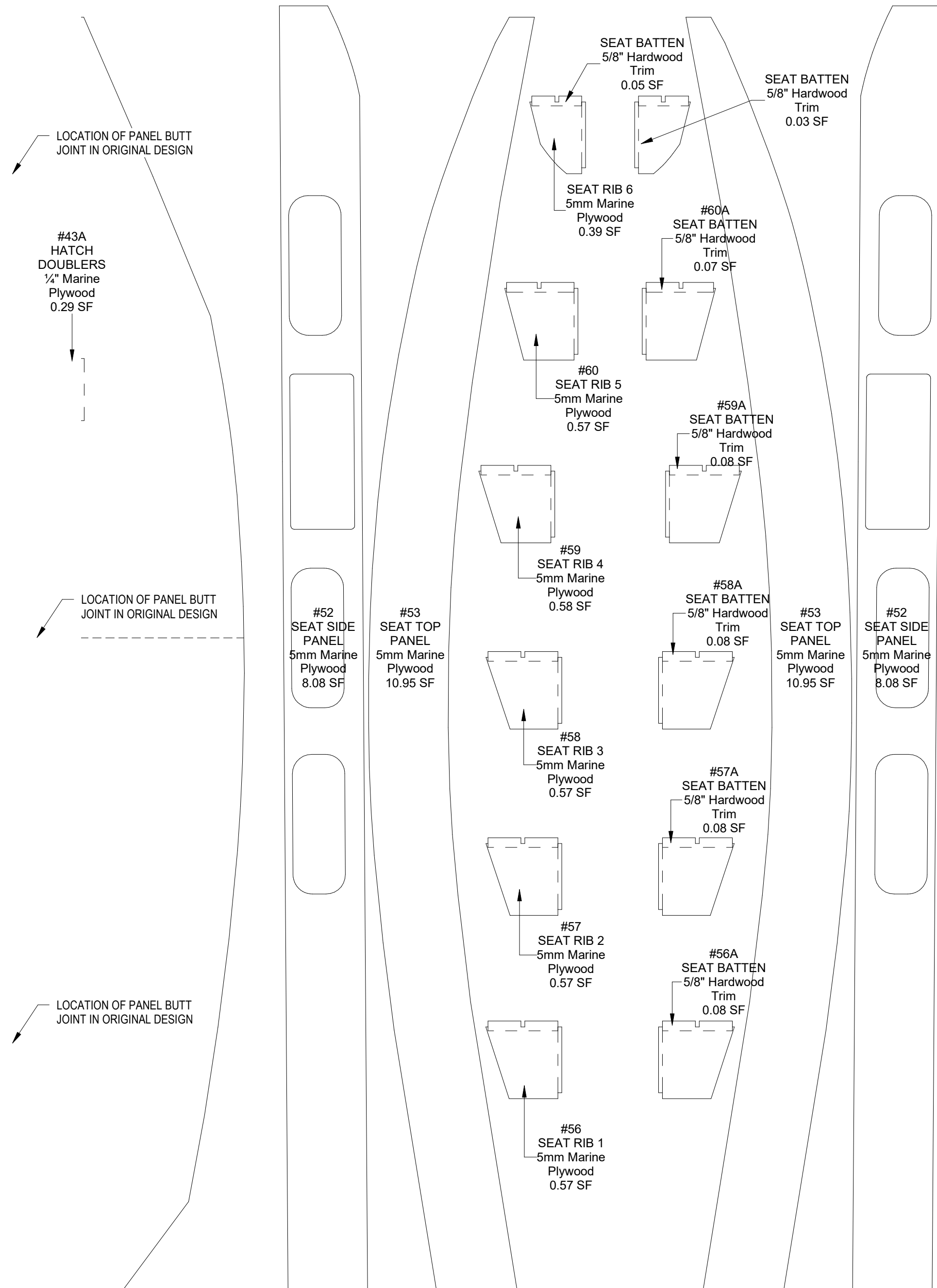




3/30/2022 10:20:45 PM

A

1 Original Design - Dependent 1  
1" = 1'-0"



Mirror 16 Plans  
Labeled Parts

DRAWN:SDC CHECK:SDC  
VERIFY SCALE: Scales based on 24"x36" prints.  
PROJECT NO. 1  
SHEET NO. O-3



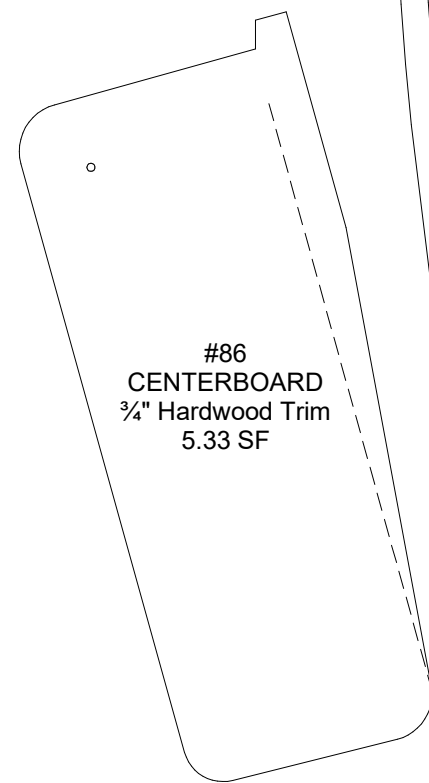
3/30/2022 10:20:46 PM

1

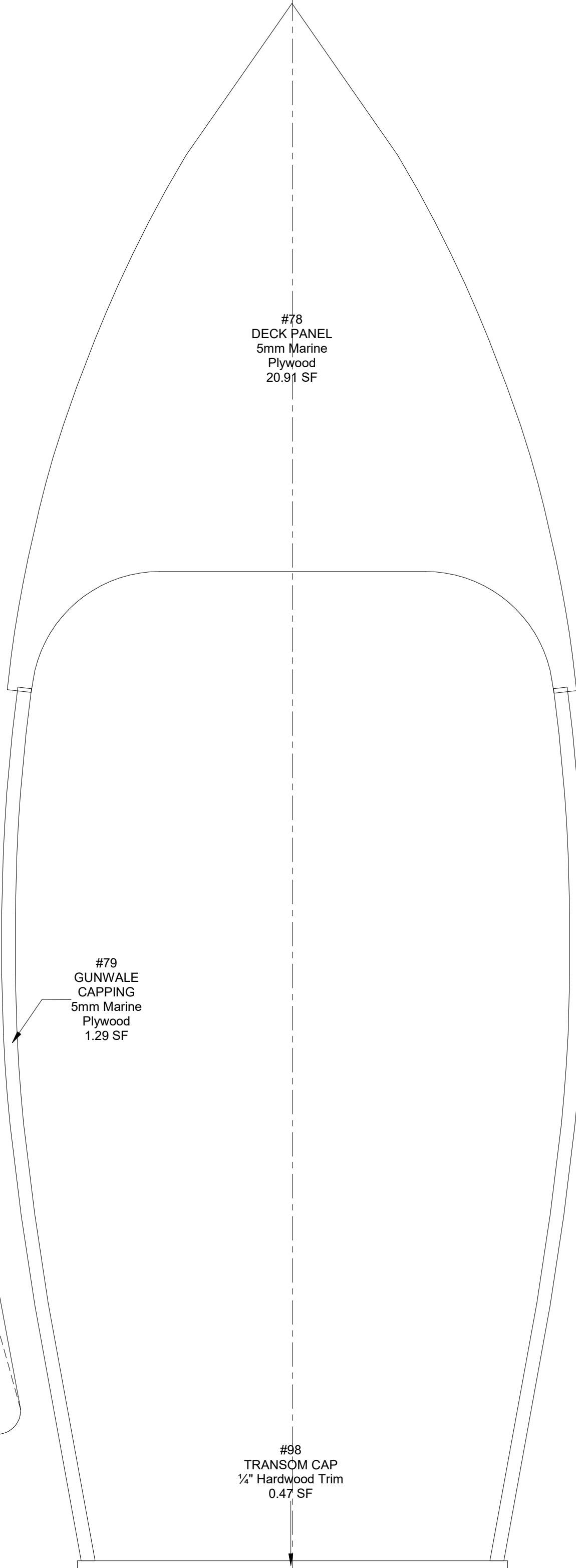
Original Design - Deck, Centerboard, Rudder, and Sails

1" = 1'-0"

A



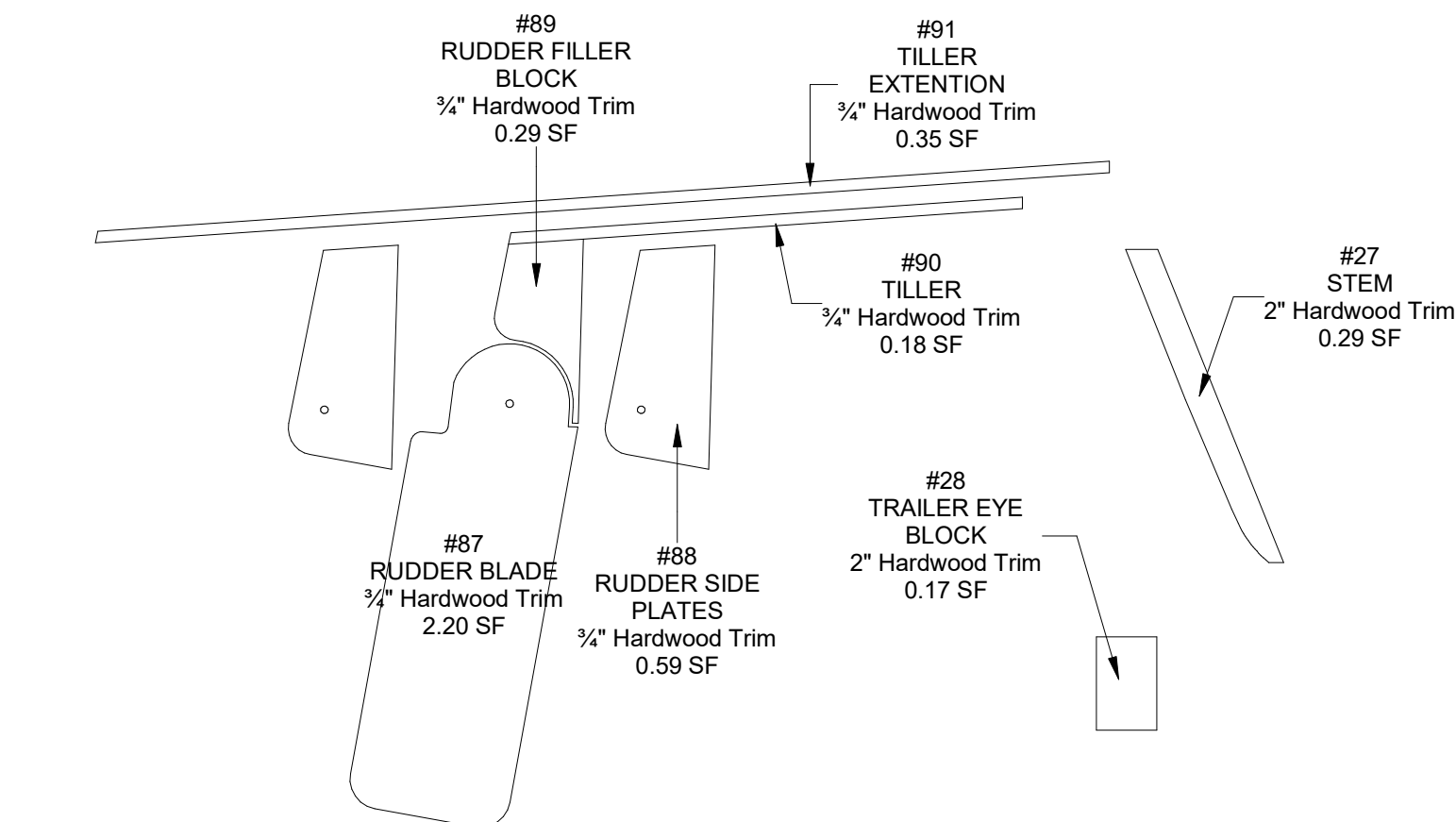
#86  
CENTERBOARD  
½" Hardwood Trim  
5.33 SF



#78  
DECK PANEL  
5mm Marine  
Plywood  
20.91 SF

#79  
GUNWALE  
CAPPING  
5mm Marine  
Plywood  
1.29 SF

#98  
TRANSOM CAP  
½" Hardwood Trim  
0.47 SF



#87  
RUDDER BLADE  
½" Hardwood Trim  
2.20 SF

#88  
RUDDER SIDE  
PLATES  
½" Hardwood Trim  
0.59 SF

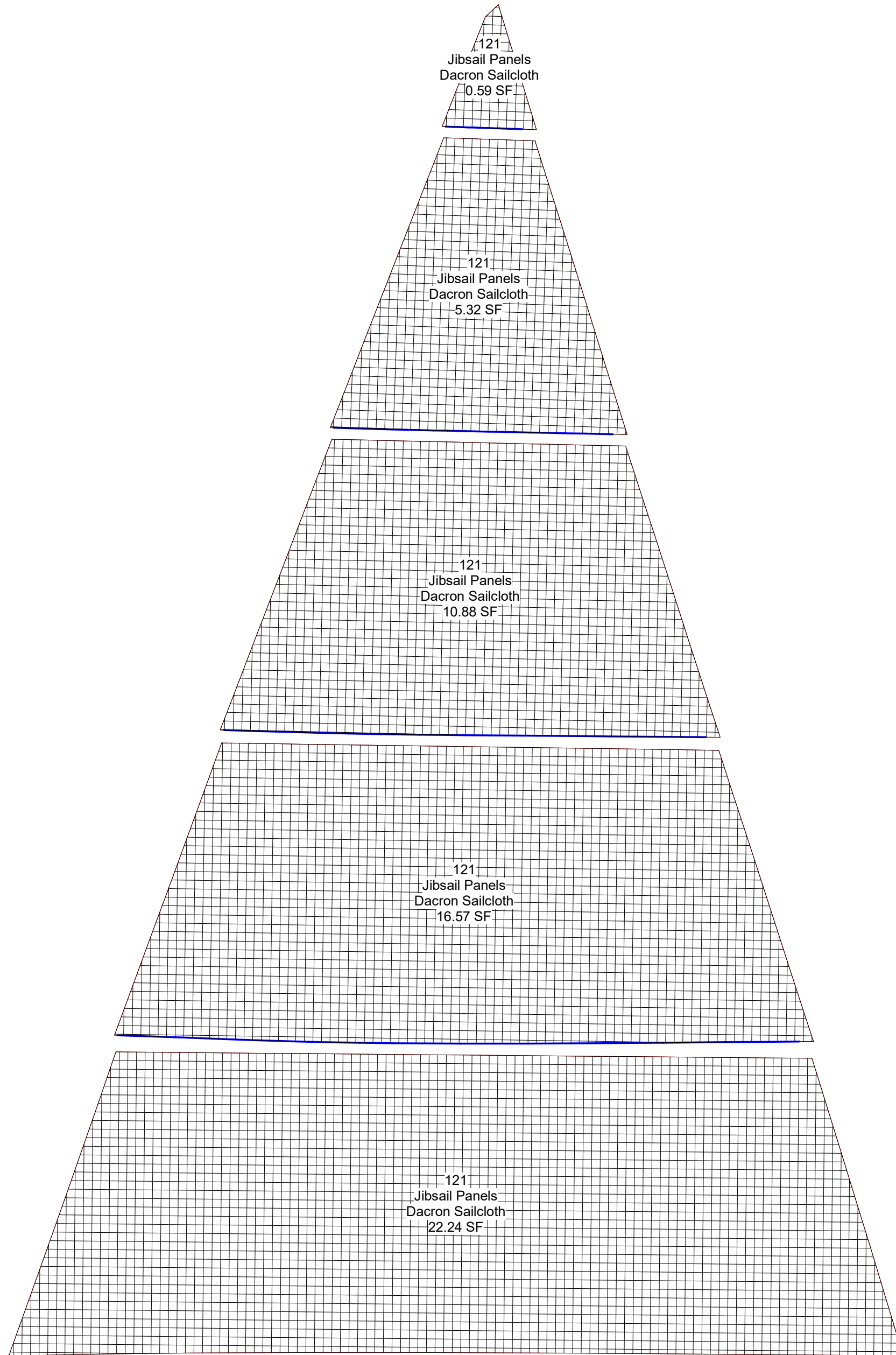
#89  
RUDDER FILLER  
BLOCK  
½" Hardwood Trim  
0.29 SF

#90  
TILLER  
½" Hardwood Trim  
0.18 SF

#91  
TILLER  
EXTENTION  
½" Hardwood Trim  
0.35 SF

#27  
STEM  
2" Hardwood Trim  
0.29 SF

#28  
TRAILER EYE  
BLOCK  
2" Hardwood Trim  
0.17 SF



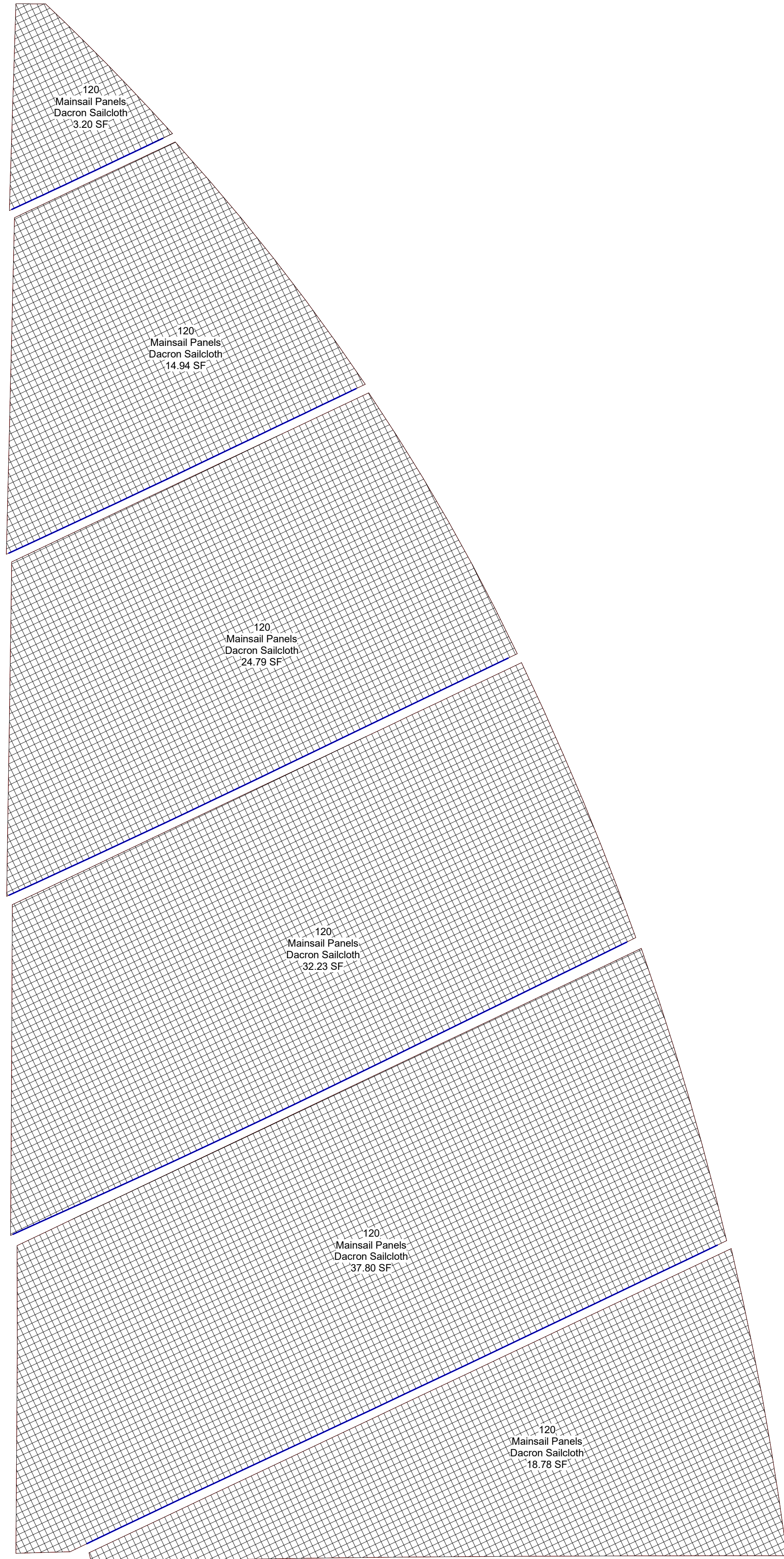
#121  
Jibsail Panels  
Dacron Sailcloth  
0.59 SF

#121  
Jibsail Panels  
Dacron Sailcloth  
5.32 SF

#121  
Jibsail Panels  
Dacron Sailcloth  
10.88 SF

#121  
Jibsail Panels  
Dacron Sailcloth  
16.57 SF

#121  
Jibsail Panels  
Dacron Sailcloth  
22.24 SF



#120  
Mainsail Panels  
Dacron Sailcloth  
3.20 SF

#120  
Mainsail Panels  
Dacron Sailcloth  
14.94 SF

#120  
Mainsail Panels  
Dacron Sailcloth  
24.79 SF

#120  
Mainsail Panels  
Dacron Sailcloth  
32.23 SF

#120  
Mainsail Panels  
Dacron Sailcloth  
37.80 SF

#120  
Mainsail Panels  
Dacron Sailcloth  
18.78 SF

Mirror 16 Plans

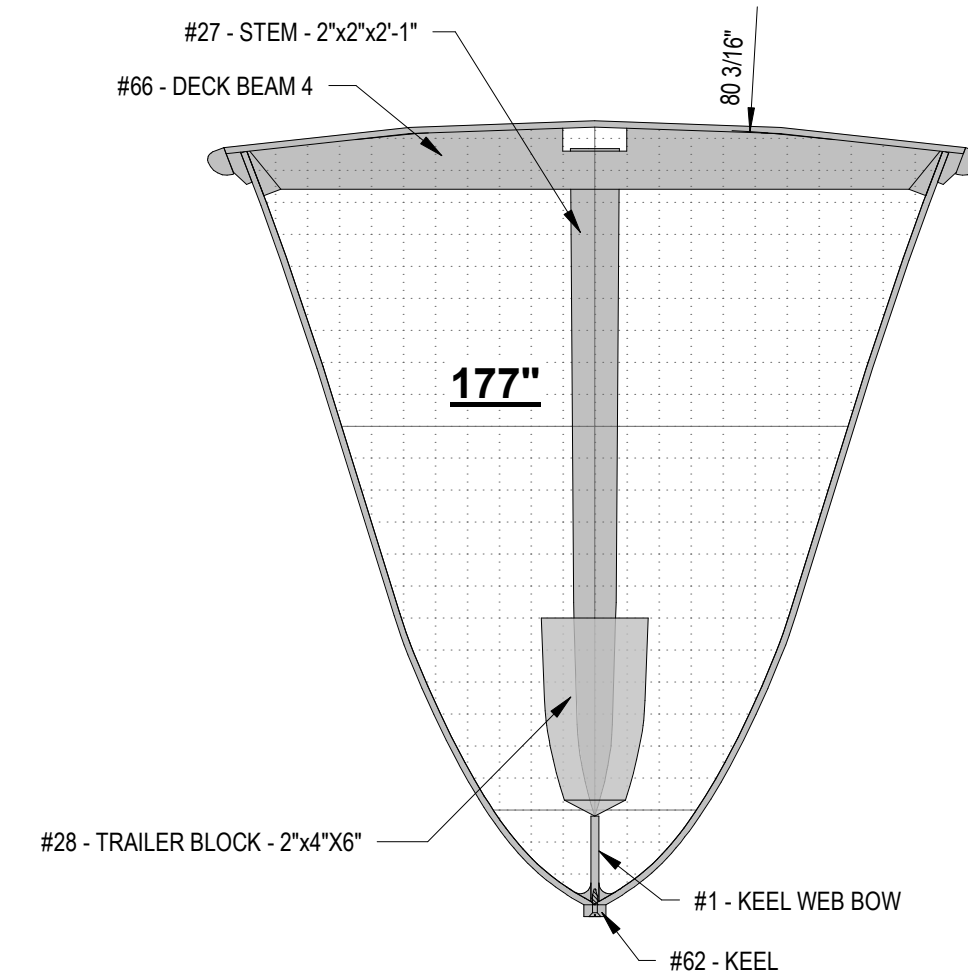
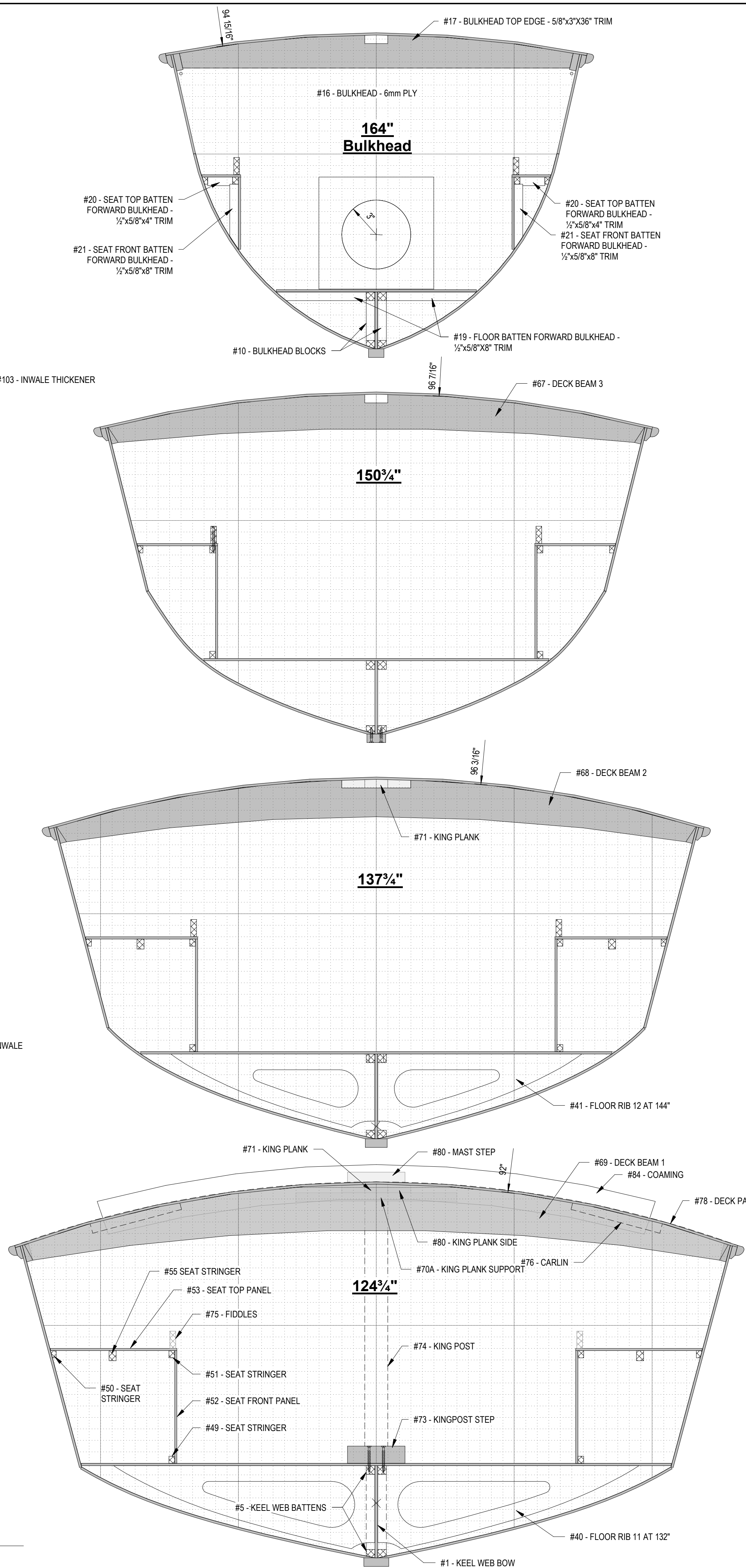
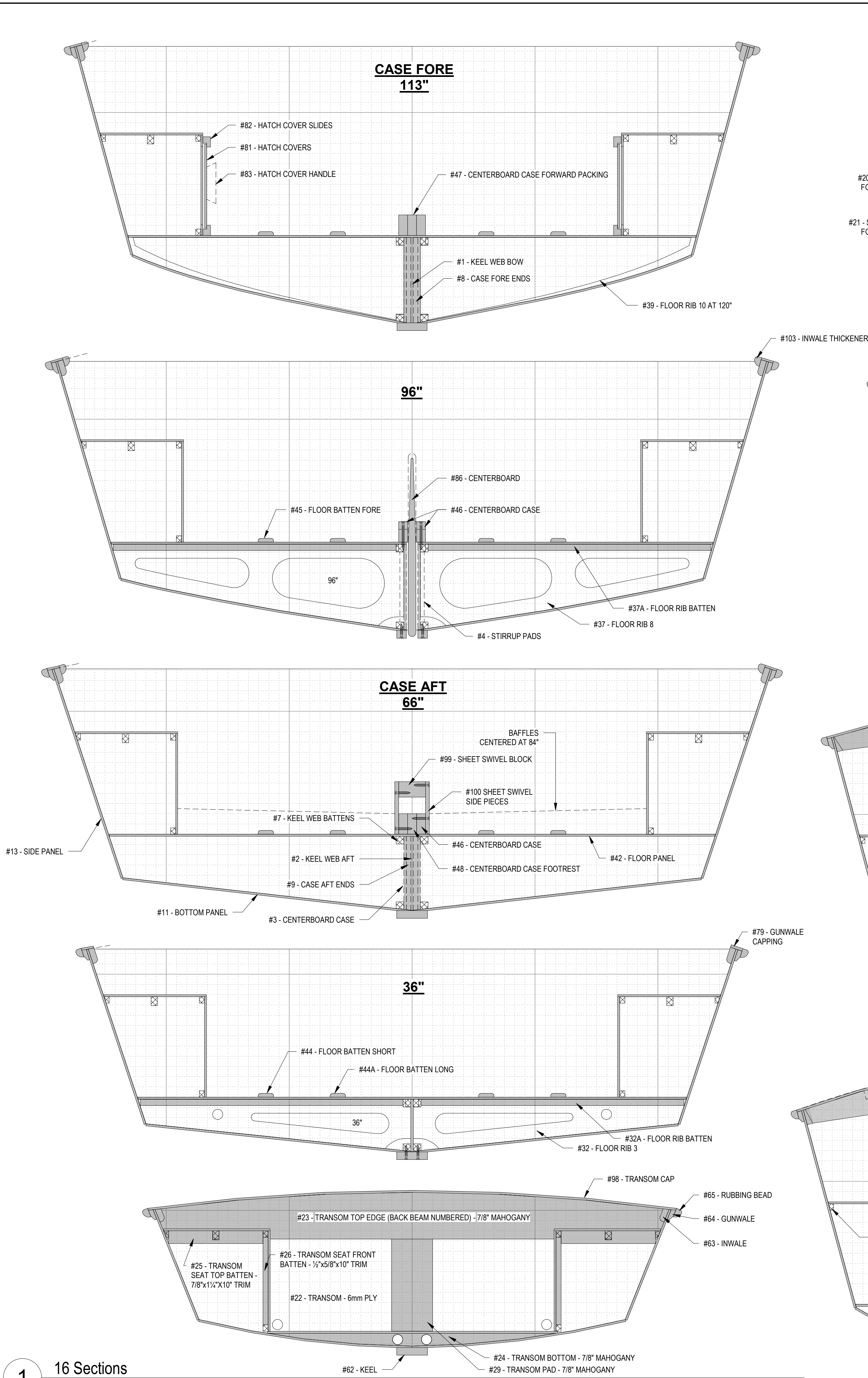
Labeled Parts

DRAWN:SDC	CHECK:SDC
VERIFY SCALE: Scales based on 24"x36" prints.	
1-1/2 Inches	
PROJECT NO. 1	PAGE
SHEET NO.	O-4



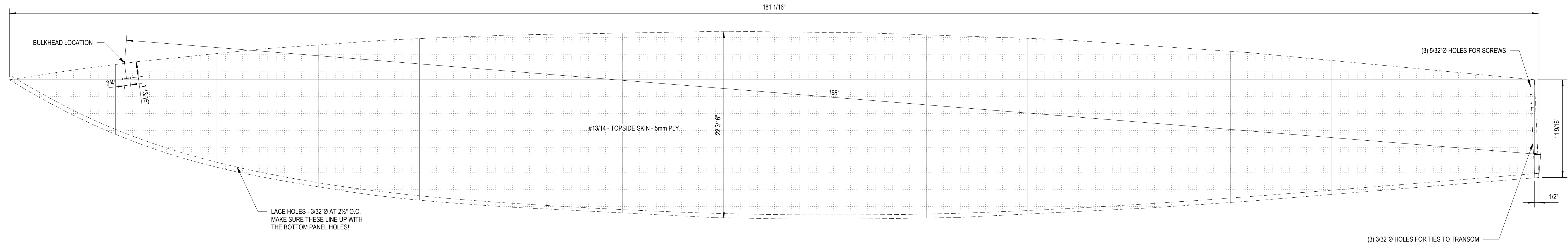
3/30/2022 10:20:47 PM

1 16 Sections  
1 : 6

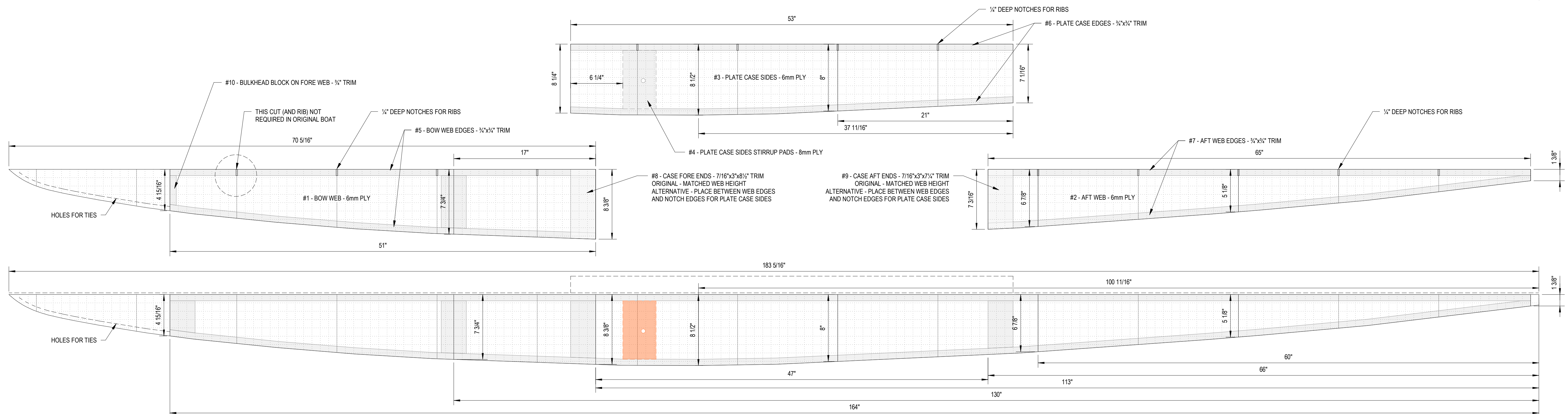
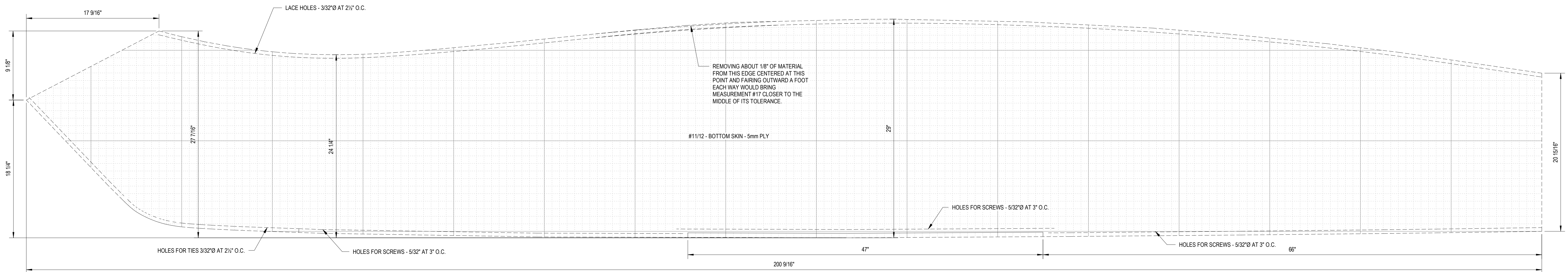


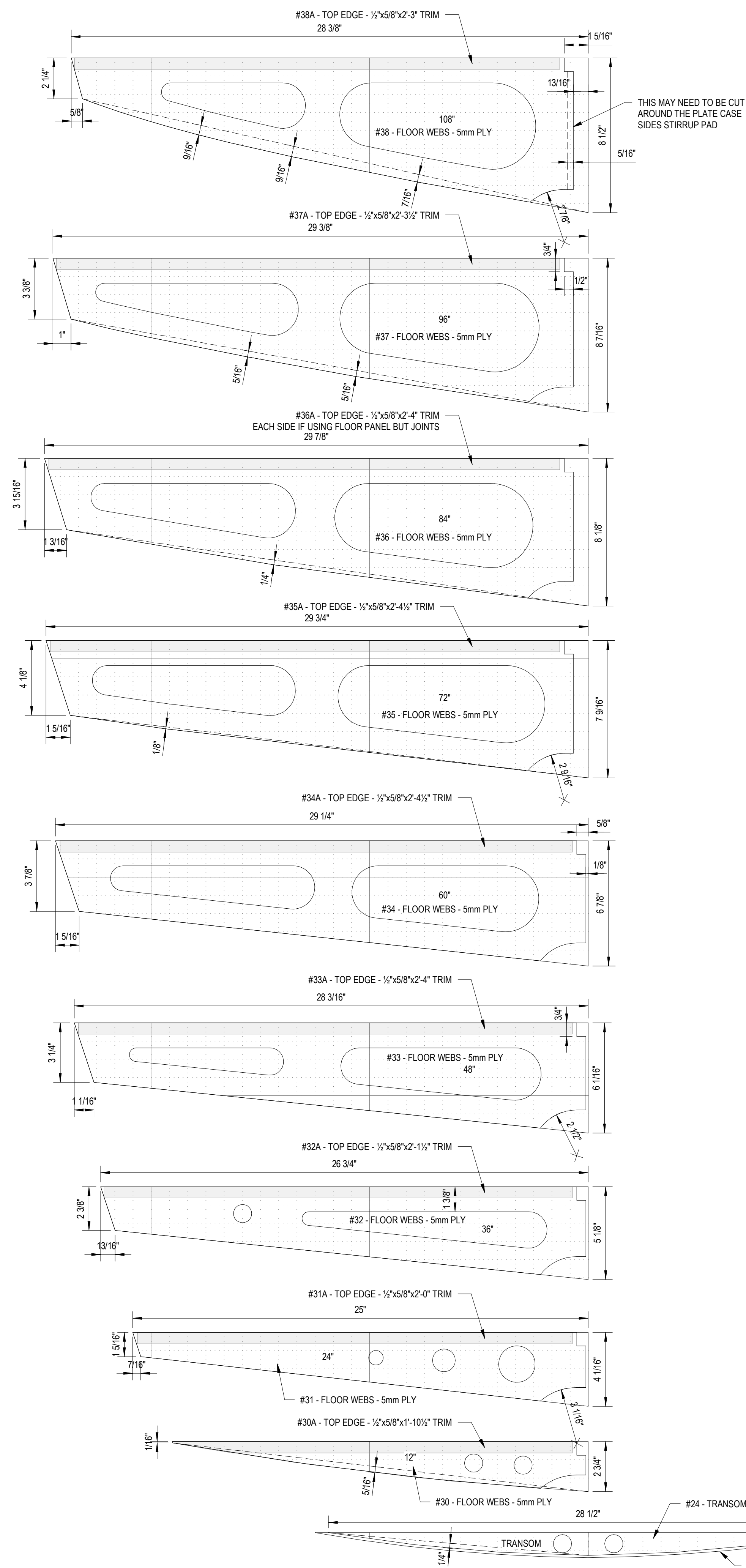
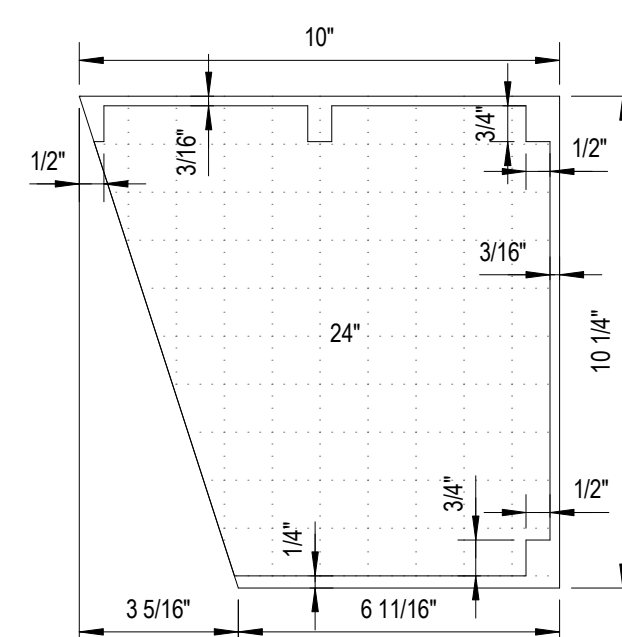
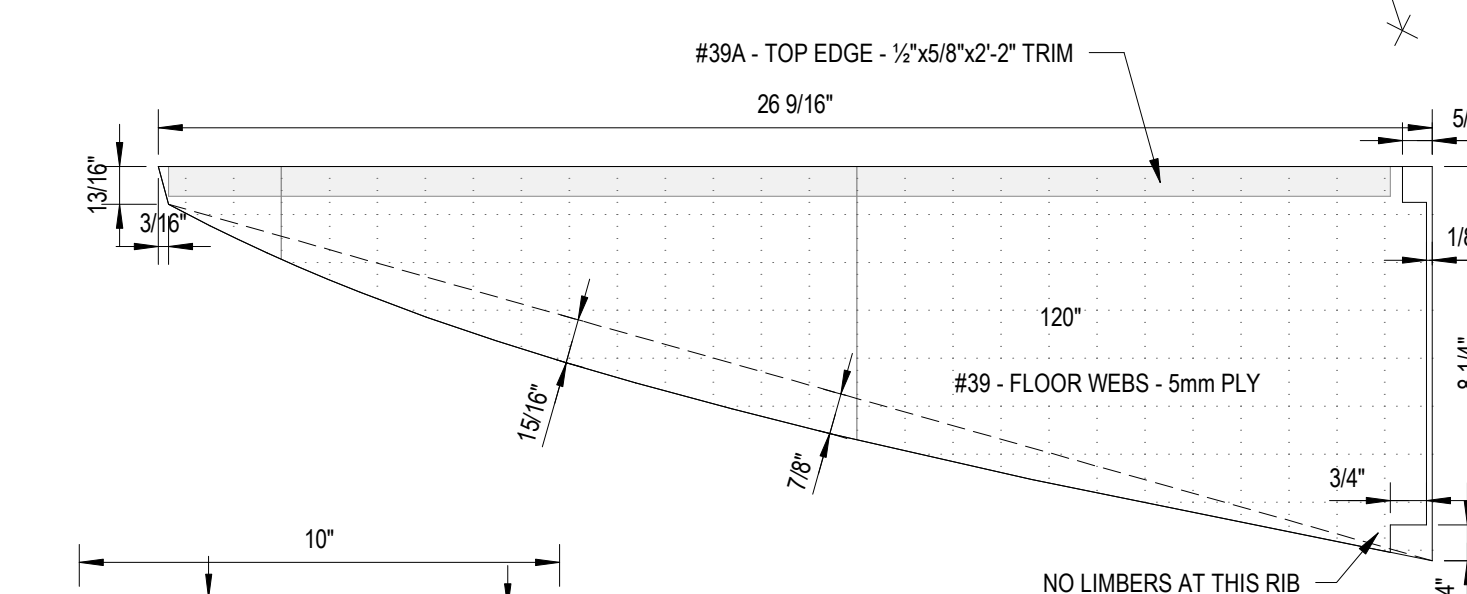
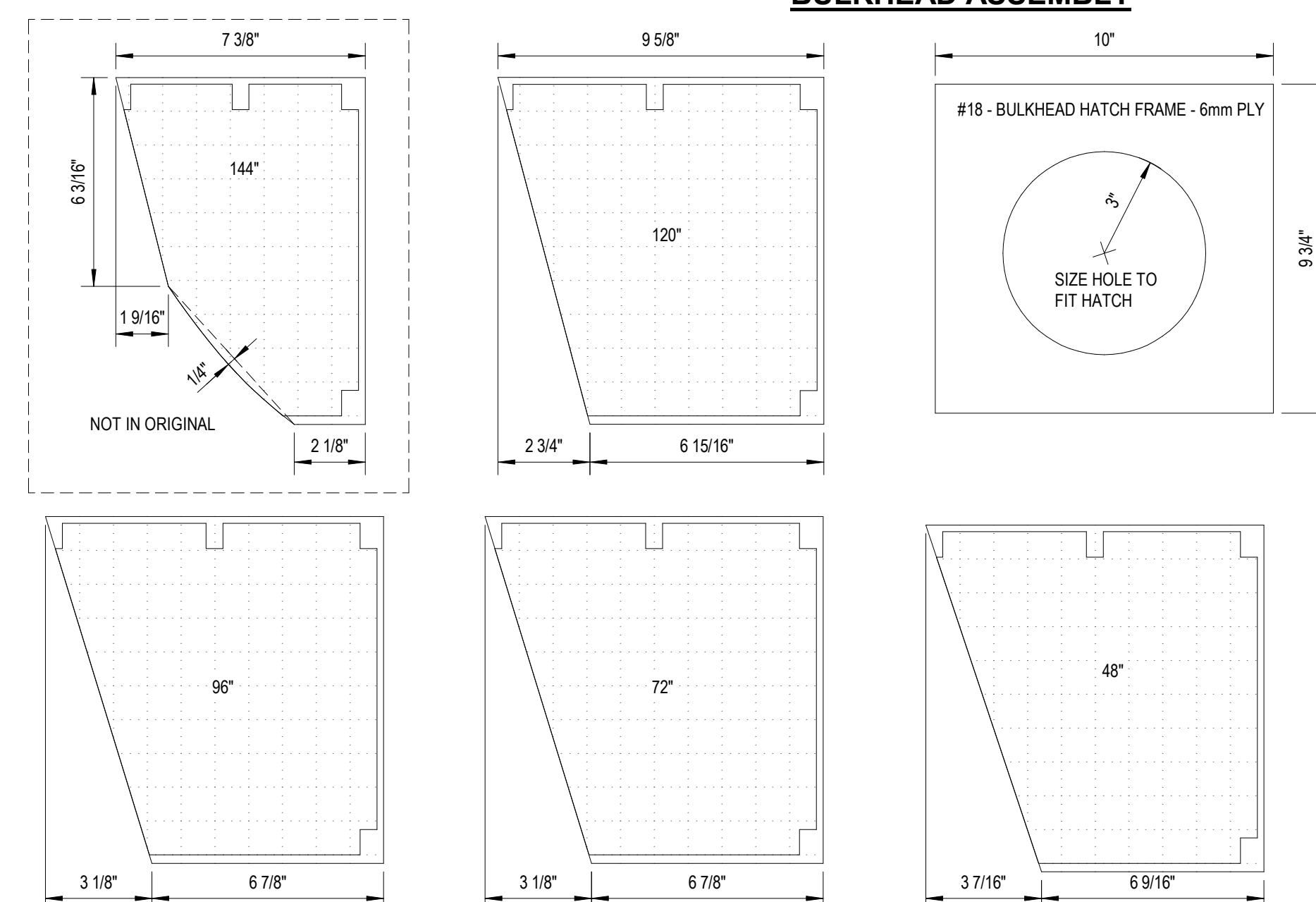
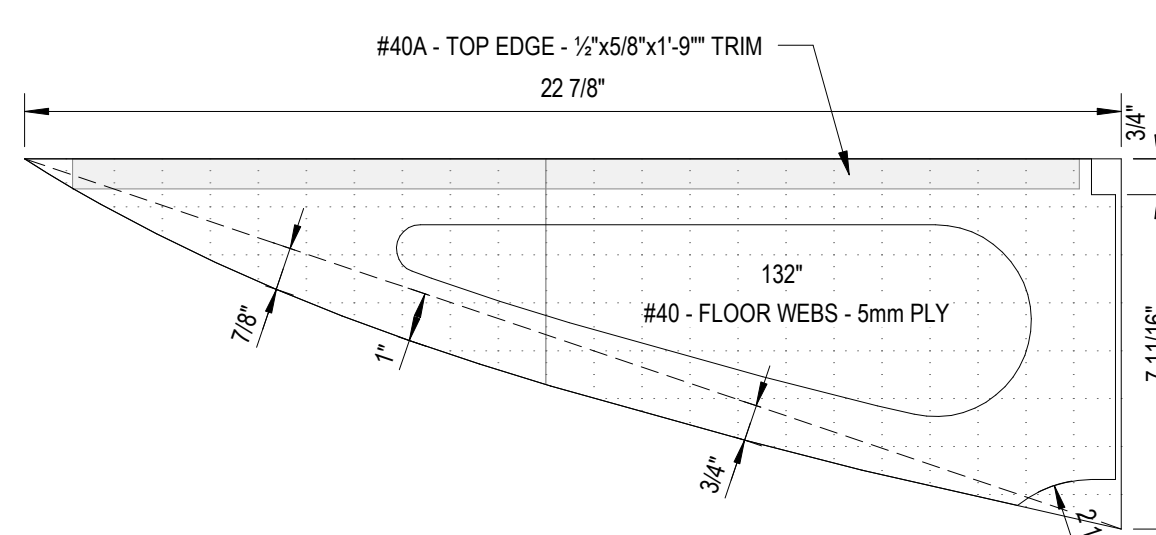
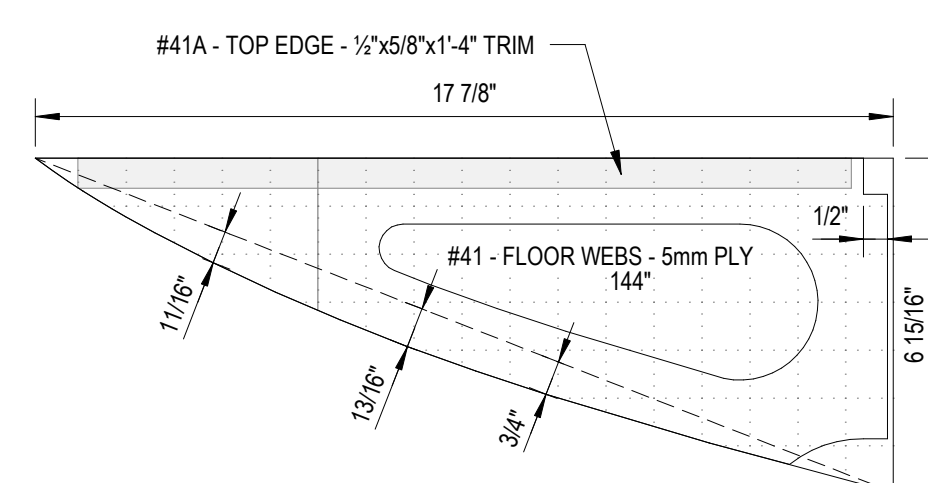
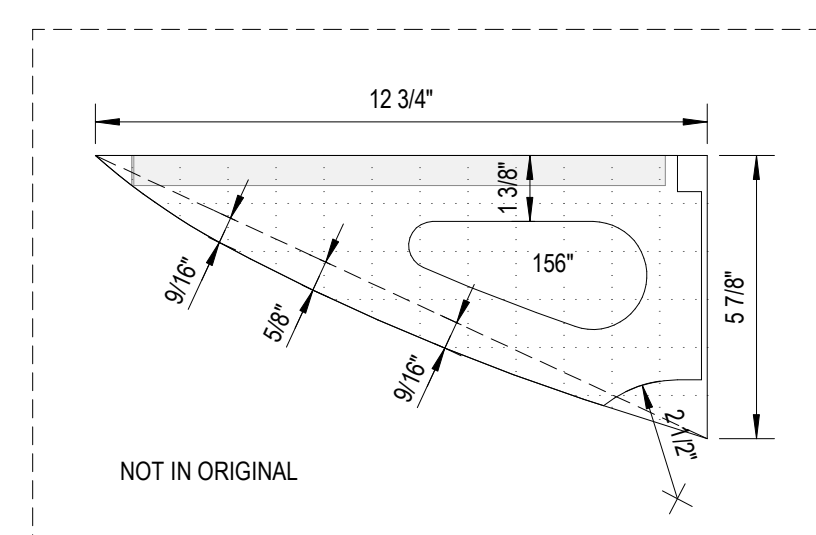
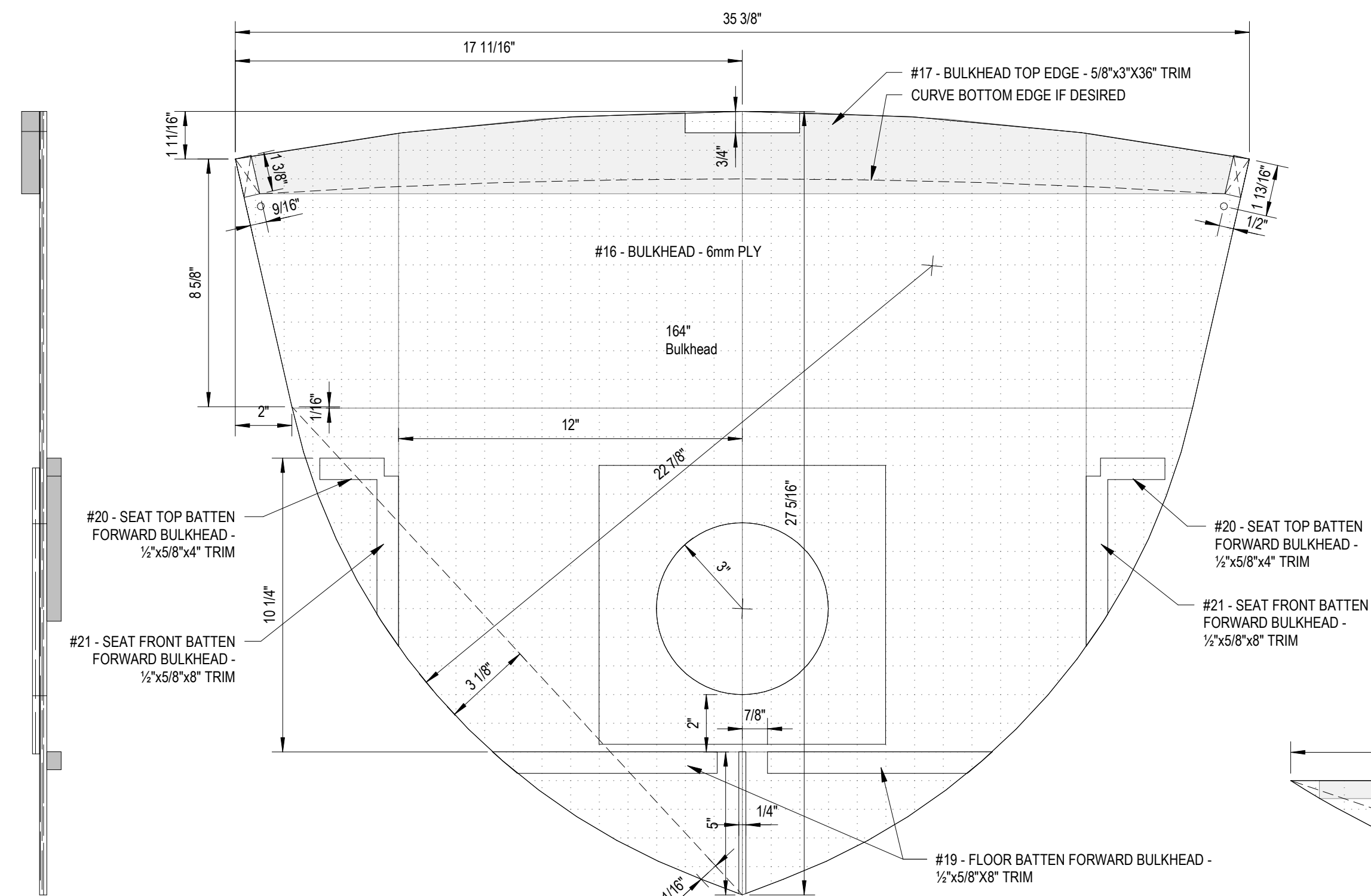
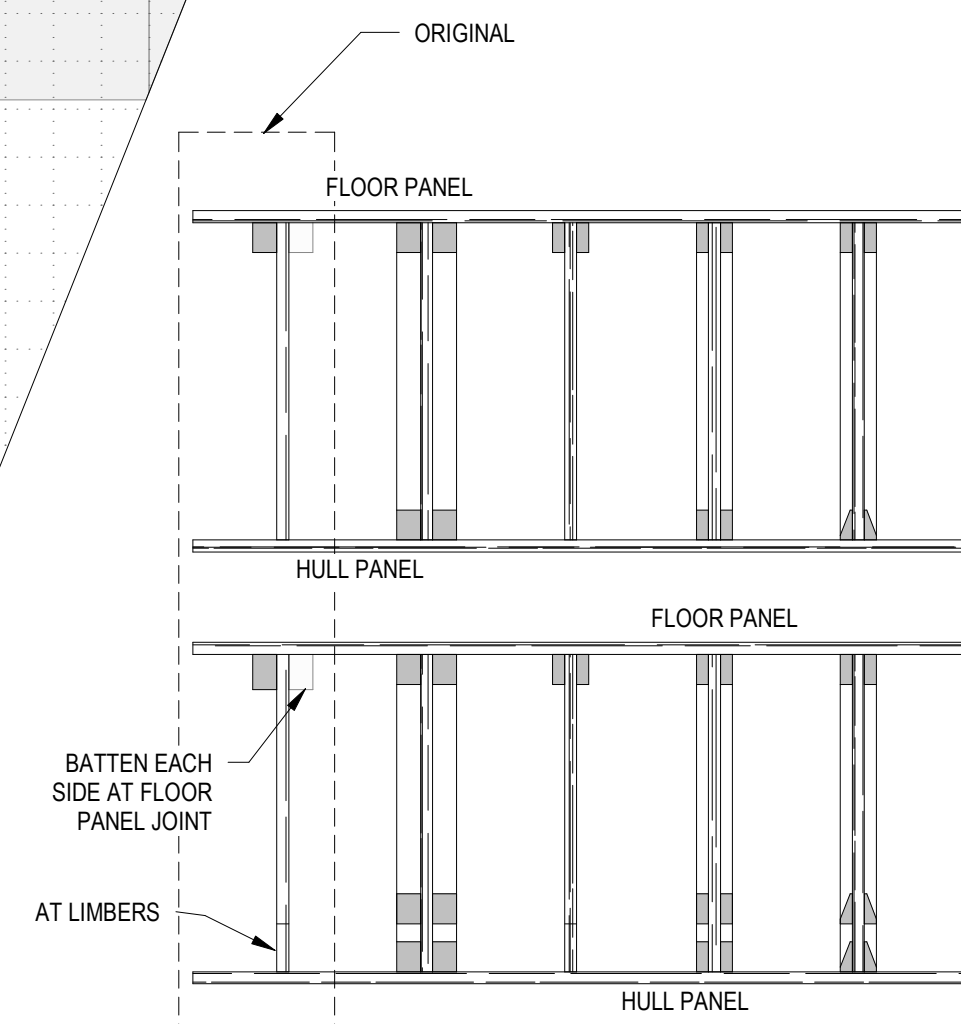
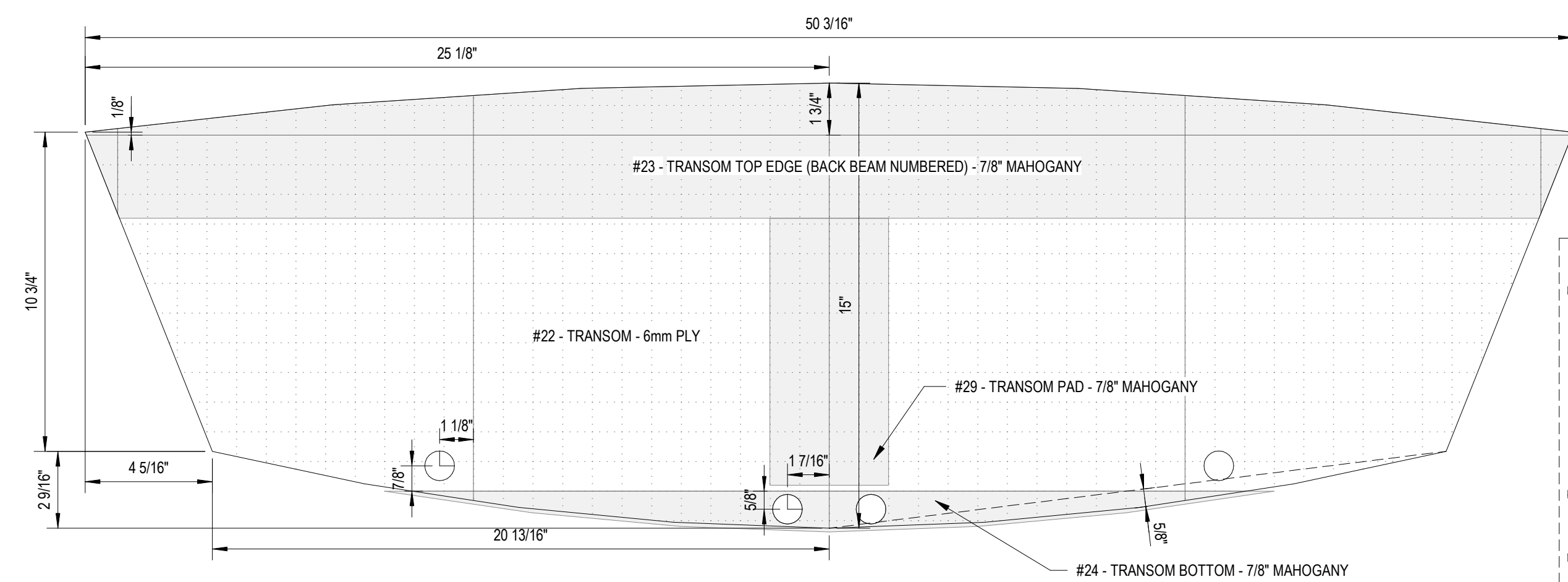
Mirror 16 Plans

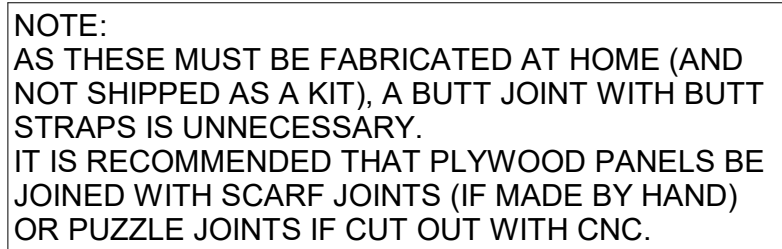
Sections



NOTE:  
AS THESE MUST BE FABRICATED AT HOME (AND NOT SHIPPED AS A KIT), A BUTT JOINT WITH BUTT STRAPS IS UNNECESSARY.  
IT IS RECOMMENDED THAT PLYWOOD PANELS BE JOINED WITH SCARF JOINTS (IF MADE BY HAND) OR PUZZLE JOINTS IF CUT OUT WITH CNC.







## 1 12 Floor and Seat Panels




## Deck Panels

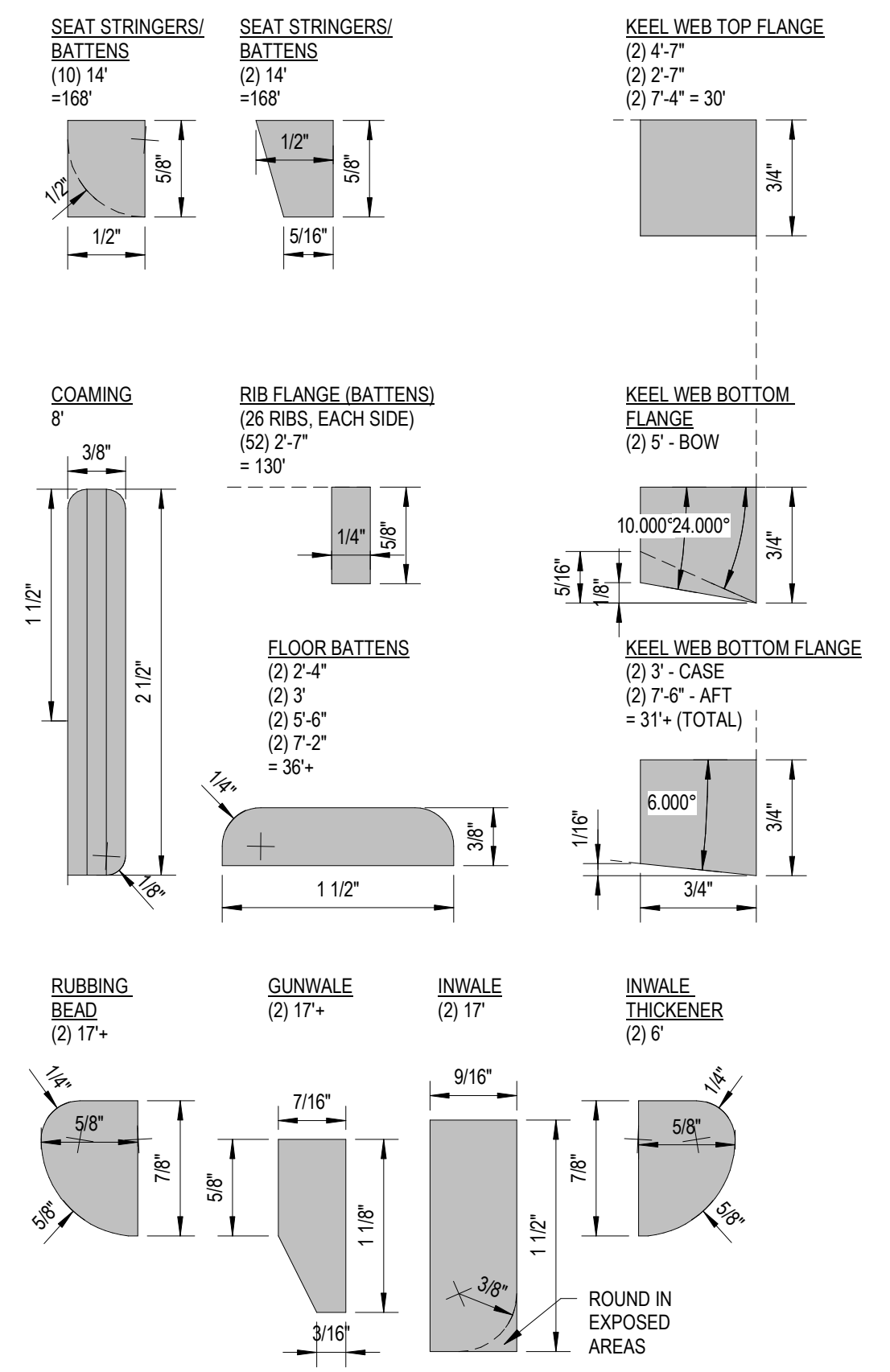
[illegible]

Mirror 16 Plans

---

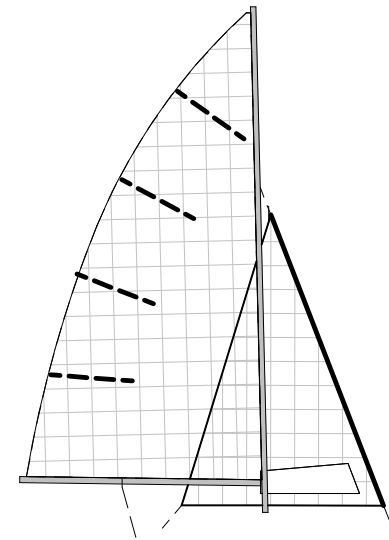
Deck Panels and Hardwood Parts

DRAWN:SDC	CHECK:SDC
VERIFY SCALE: Scales based on 24"x36" prints. 	
PROJECT NO. 1	PAGE
SHEET NO. <div style="font-size: 2em; text-align: center;">O-13</div>	

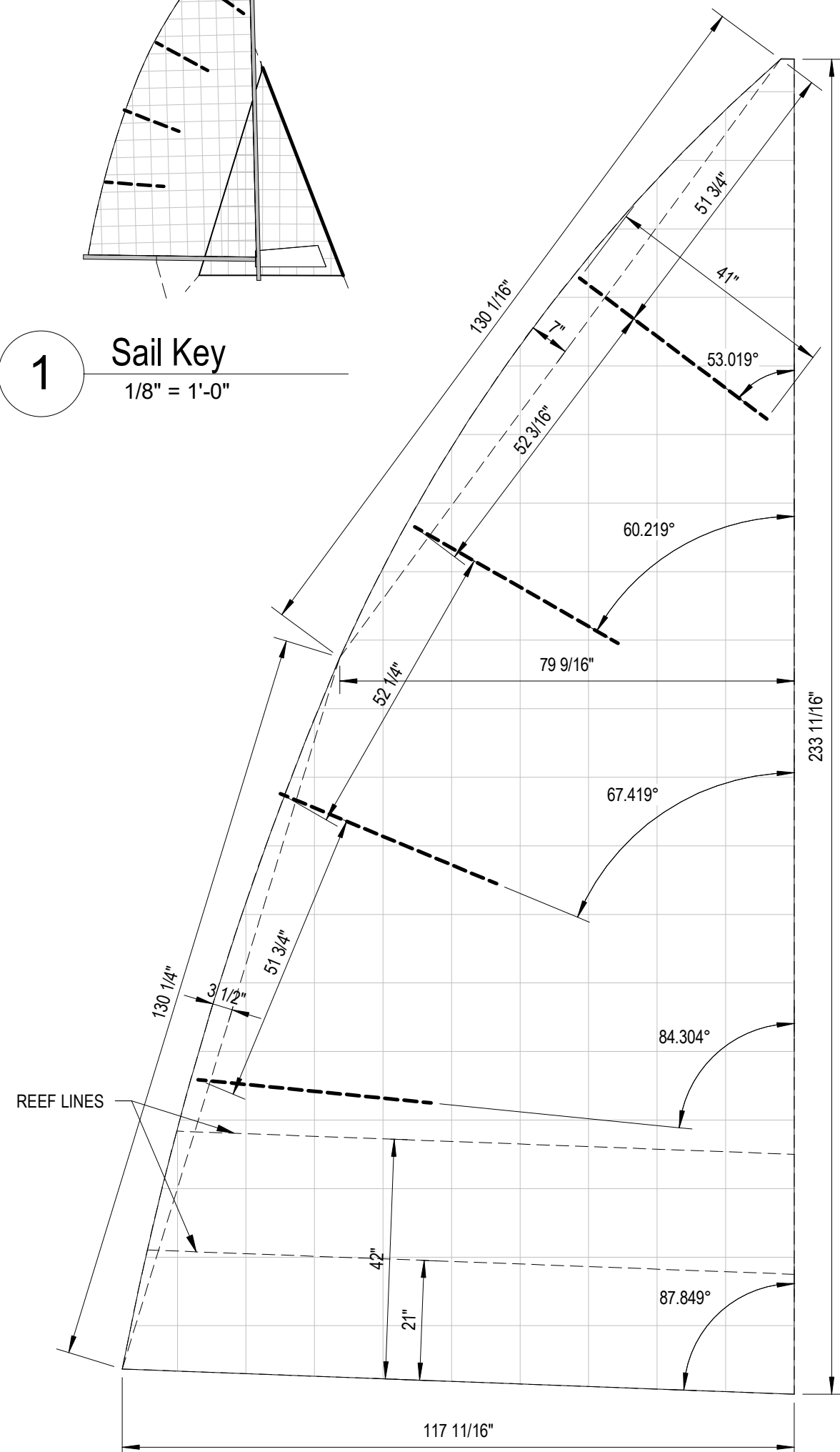




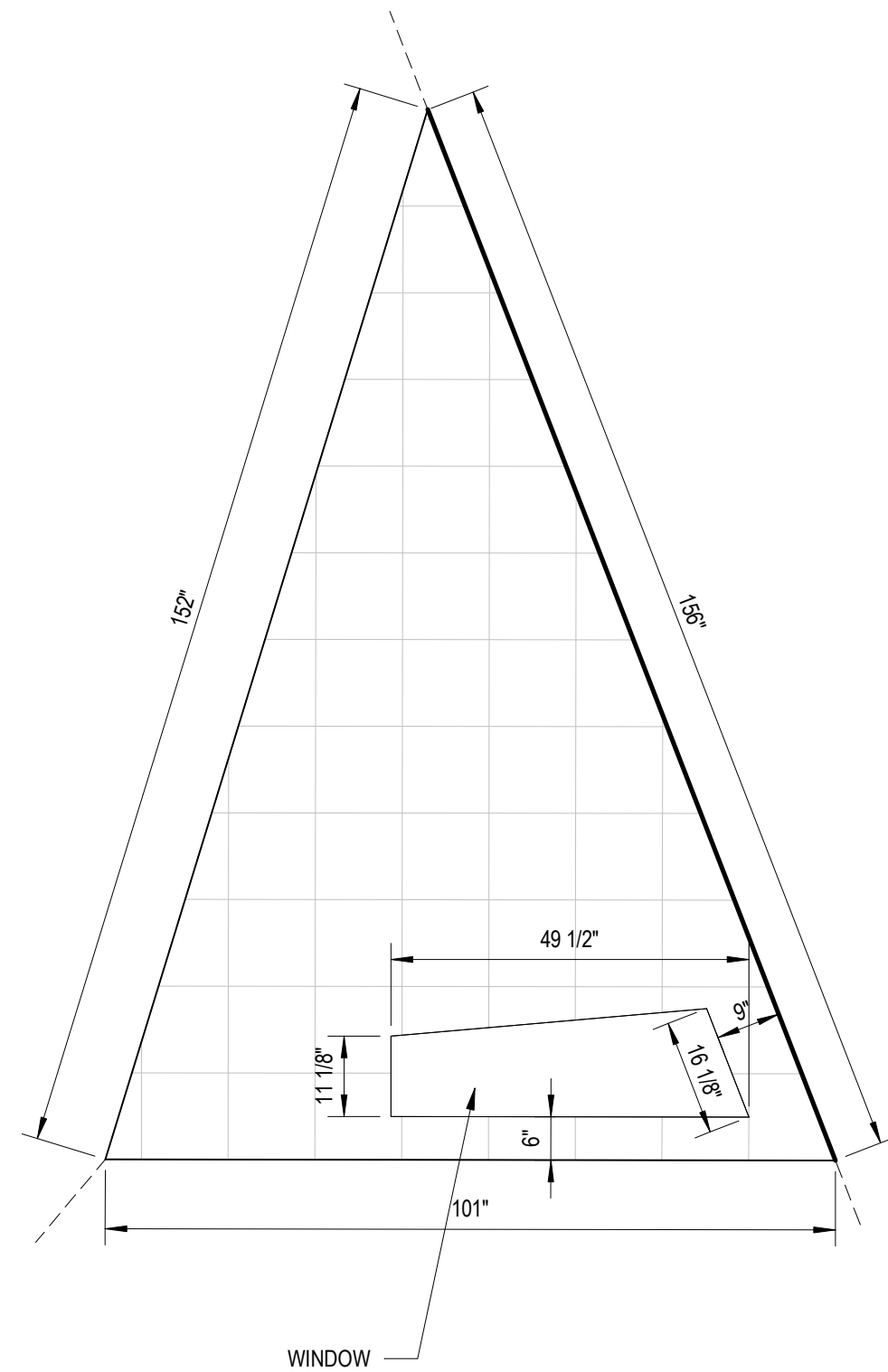
3/30/2022 10:20:50 PM



1 Sail Key  
1/8" = 1'-0"

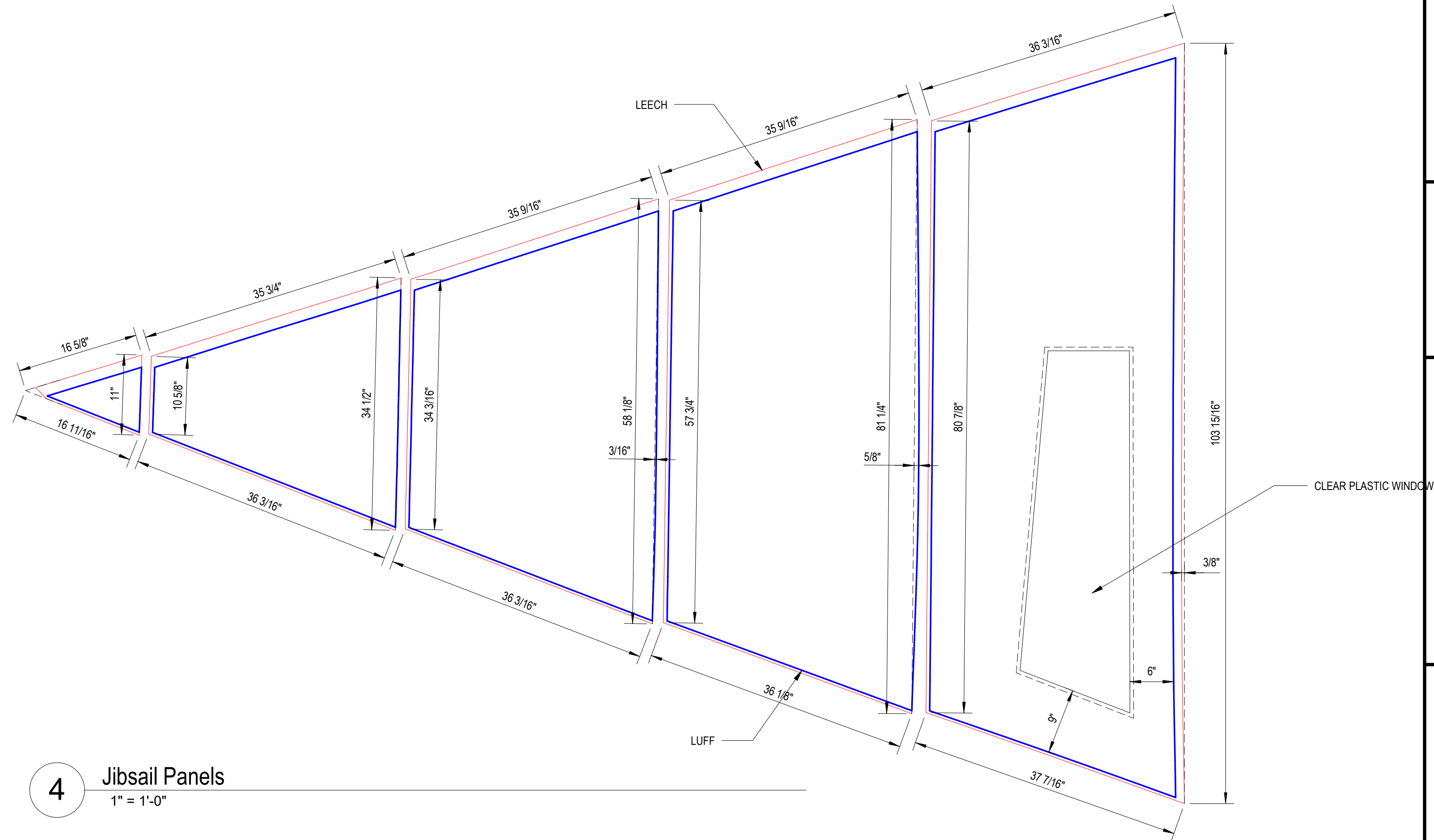


2 Sail Configuration  
1/2" = 1'-0"



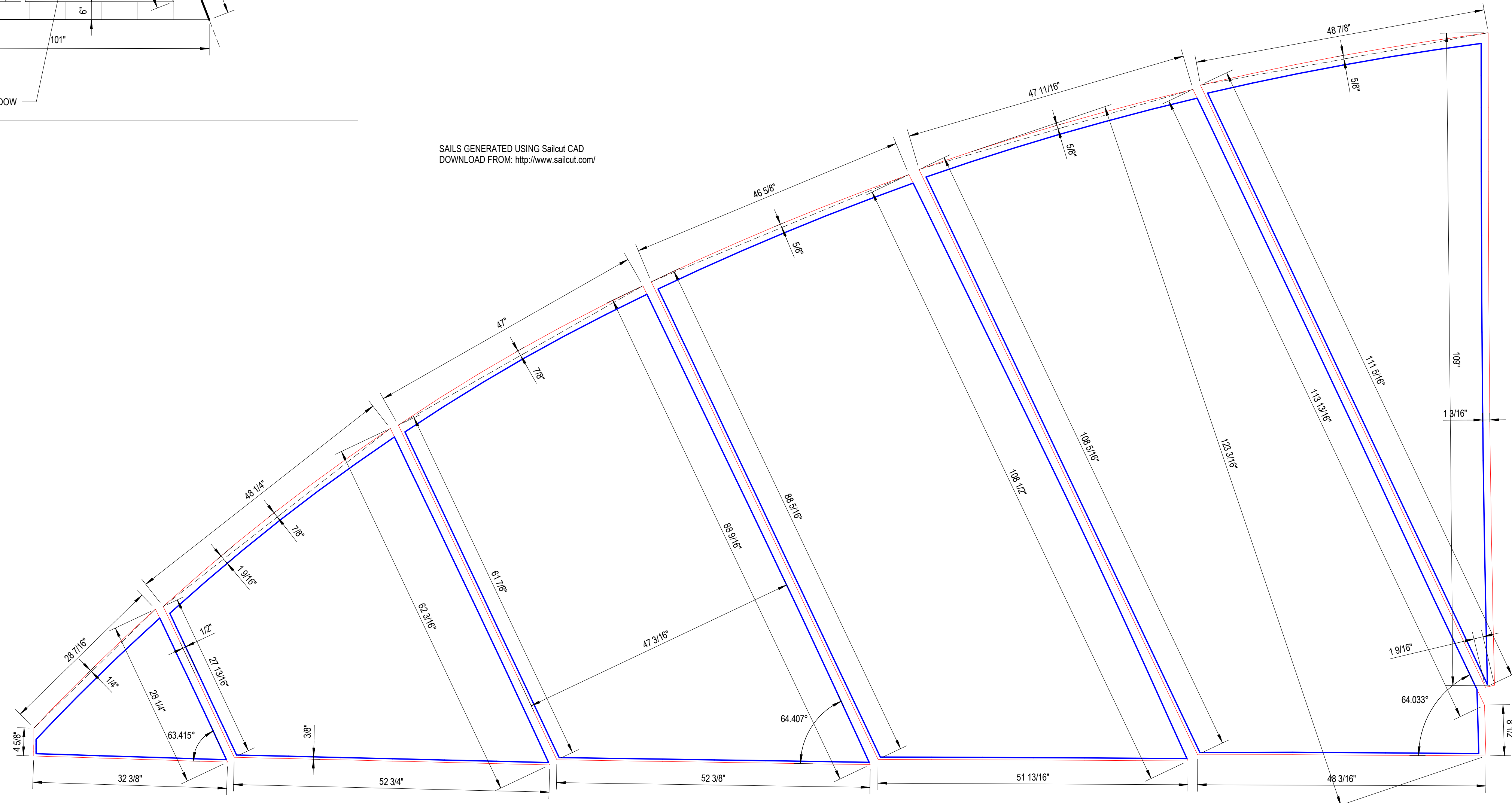
WINDOW

4 Jibsail Panels  
1" = 1'-0"



SAILS GENERATED USING Sailcut CAD  
DOWNLOAD FROM: <http://www.sailcut.com/>

3 Mainsail Panels  
1" = 1'-0"



Mirror 16 Plans

Mainsail Pattern



Wood Takeoff (Original Design - Okoume)														
Level	Type	Type Mark	Mark	Comments	Count	Area	Volume	Weight	Laves of Fiberglass	Coats of Paint	Total Weight	Area FG	Area Pt	Net Buoyancy
Original Design	7/8" Hardwood Trim		92	BAFFLE	2	0.68 SF	0.05 CF	1.33 lbf	1	6	1.51 lbf	0.68 SF	4.06 SF	1.57 lb
Original Design	7/8" Hardwood Trim		76	CARLIN	2	0.27 SF	0.02 CF	0.54 lbf	0	3	0.56 lbf	0.00 SF	0.82 SF	0.69 lb
Original Design	7/8" Hardwood Trim		46	CENTERBOARD CASE	2	1.34 SF	0.10 CF	2.63 lbf	0	6	2.79 lbf	0.00 SF	8.01 SF	3.29 lb
Original Design	7/8" Hardwood Trim		48	CENTERBOARD CASE FOOTREST	1	0.20 SF	0.01 CF	0.39 lbf	0	6	0.41 lbf	0.00 SF	1.19 SF	0.49 lb
Original Design	7/8" Hardwood Trim		47	CENTERBOARD CASE FORWARD PACKING	1	0.04 SF	0.00 CF	0.08 lbf			0.00 lbf	0.00 SF	0.00 SF	0.00 lb
Original Design	7/8" Hardwood Trim		55	SEAT STRINGER	2	1.06 SF	0.08 CF	2.08 lbf	0	4	2.17 lbf	0.00 SF	4.23 SF	2.64 lb
Original Design	8mm Marine Plywood		4	STIRRUP PADS	2	0.37 SF	0.01 CF	0.26 lbf	0	6	0.30 lbf	0.00 SF	2.19 SF	0.30 lb
: 12			3		12	3.95 SF	0.27 CF	7.32 lbf			7.74 lbf	0.68 SF	20.51 SF	8.98 lb
Original Design	5mm Marine Plywood	Ply 1	11	BOTTOM PANEL	2	69.46 SF	1.13 CF	30.52 lbf	0	6	38.86 lbf	0.00 SF	416.74 SF	31.68 lb
Original Design	5mm Marine Plywood	Ply 1	78	DECK PANEL	1	20.91 SF	0.34 CF	9.19 lbf	0	5	11.28 lbf	0.00 SF	104.55 SF	9.96 lb
Original Design	5mm Marine Plywood	Ply 1	42	FLOOR PANEL	1	55.72 SF	0.91 CF	24.49 lbf	0	6	31.17 lbf	0.00 SF	334.33 SF	25.42 lb
Original Design	5mm Marine Plywood	Ply 1	30	FLOOR RIB 1	2	0.46 SF	0.01 CF	0.20 lbf	0	4	0.24 lbf	0.00 SF	1.85 SF	0.23 lb
Original Design	5mm Marine Plywood	Ply 1	31	FLOOR RIB 2	2	0.82 SF	0.01 CF	0.36 lbf	0	4	0.43 lbf	0.00 SF	3.29 SF	0.41 lb
Original Design	5mm Marine Plywood	Ply 1	32	FLOOR RIB 3	2	1.06 SF	0.02 CF	0.46 lbf	0	4	0.55 lbf	0.00 SF	4.22 SF	0.52 lb
Original Design	5mm Marine Plywood	Ply 1	33	FLOOR RIB 4	2	1.25 SF	0.02 CF	0.55 lbf	0	4	0.65 lbf	0.00 SF	4.99 SF	0.62 lb
Original Design	5mm Marine Plywood	Ply 1	34	FLOOR RIB 5	2	1.36 SF	0.02 CF	0.60 lbf	0	4	0.70 lbf	0.00 SF	5.43 SF	0.67 lb
Original Design	5mm Marine Plywood	Ply 1	35	FLOOR RIB 6	2	1.35 SF	0.02 CF	0.59 lbf	0	4	0.70 lbf	0.00 SF	5.39 SF	0.67 lb
Original Design	5mm Marine Plywood	Ply 1	36	FLOOR RIB 7	2	1.42 SF	0.02 CF	0.63 lbf	0	4	0.74 lbf	0.00 SF	5.69 SF	0.71 lb
Original Design	5mm Marine Plywood	Ply 1	37	FLOOR RIB 8	2	1.39 SF	0.02 CF	0.61 lbf	0	4	0.72 lbf	0.00 SF	5.56 SF	0.69 lb
Original Design	5mm Marine Plywood	Ply 1	38	FLOOR RIB 9	2	1.34 SF	0.02 CF	0.59 lbf	0	4	0.69 lbf	0.00 SF	5.35 SF	0.66 lb
Original Design	5mm Marine Plywood	Ply 1	39	FLOOR RIB 10	2	1.83 SF	0.03 CF	0.81 lbf	0	4	0.95 lbf	0.00 SF	7.33 SF	0.91 lb
Original Design	5mm Marine Plywood	Ply 1	40	FLOOR RIB 11	2	0.92 SF	0.02 CF	0.41 lbf	0	4	0.48 lbf	0.00 SF	3.70 SF	0.46 lb
Original Design	5mm Marine Plywood	Ply 1	41	FLOOR RIB 12	2	0.69 SF	0.01 CF	0.31 lbf	0	4	0.36 lbf	0.00 SF	2.78 SF	0.34 lb
Original Design	5mm Marine Plywood	Ply 1		FLOOR RIB 13	2	0.46 SF	0.01 CF	0.20 lbf	0	4	0.24 lbf	0.00 SF	1.84 SF	0.23 lb
Original Design	5mm Marine Plywood	Ply 1	79	GUNWALE CAPPING	2	2.59 SF	0.04 CF	1.14 lbf	0	3	1.29 lbf	0.00 SF	7.76 SF	1.33 lb
Original Design	5mm Marine Plywood	Ply 1	56	SEAT RIB 1	2	1.15 SF	0.02 CF	0.50 lbf	0	4	0.60 lbf	0.00 SF	4.59 SF	0.57 lb
Original Design	5mm Marine Plywood	Ply 1	57	SEAT RIB 2	2	1.14 SF	0.02 CF	0.50 lbf	0	4	0.59 lbf	0.00 SF	4.55 SF	0.56 lb
Original Design	5mm Marine Plywood	Ply 1	58	SEAT RIB 3	2	1.14 SF	0.02 CF	0.50 lbf	0	4	0.59 lbf	0.00 SF	4.55 SF	0.56 lb
Original Design	5mm Marine Plywood	Ply 1	59	SEAT RIB 4	2	1.16 SF	0.02 CF	0.51 lbf	0	4	0.60 lbf	0.00 SF	4.62 SF	0.57 lb
Original Design	5mm Marine Plywood	Ply 1	60	SEAT RIB 5	2	1.14 SF	0.02 CF	0.50 lbf	0	4	0.59 lbf	0.00 SF	4.54 SF	0.56 lb
Original Design	5mm Marine Plywood	Ply 1		SEAT RIB 6	2	0.77 SF	0.01 CF	0.34 lbf	0	4	0.40 lbf	0.00 SF	3.10 SF	0.38 lb
Original Design	5mm Marine Plywood	Ply 1	52	SEAT SIDE PANEL	2	16.15 SF	0.26 CF	7.10 lbf	0	5	8.71 lbf	0.00 SF	60.75 SF	7.69 lb
Original Design	5mm Marine Plywood	Ply 1	53	SEAT TOP PANEL	2	21.90 SF	0.36 CF	9.62 lbf	0	5	11.81 lbf	0.00 SF	109.48 SF	10.43 lb
Original Design	5mm Marine Plywood	Ply 1	13	SIDE PANEL	2	43.35 SF	0.71 CF	19.05 lbf	0	6	24.25 lbf	0.00 SF	260.13 SF	19.78 lb
Ply 1: 50					50	250.92 SF	4.08 CF	110.27 lbf			138.21 lbf	0.00 SF	1397.10 SF	116.63 lb
Original Design	1/2" Marine Plywood	Ply 2	16	BULKHEAD	1	4.61 SF	0.10 CF	2.59 lbf	0	6	3.15 lbf	0.00 SF	27.66 SF	2.85 lb
Original Design	1/2" Marine Plywood	Ply 2	3	CENTERBOARD CASE	2	5.92 SF	0.12 CF	3.33 lbf	0	6	4.04 lbf	0.00 SF	35.54 SF	3.66 lb
Original Design	1/2" Marine Plywood	Ply 2	43A	HATCH DOUBLERS	2	0.58 SF	0.01 CF	0.33 lbf	0	0	0.33 lbf	0.00 SF	0.00 SF	0.43 lb
Original Design	1/2" Marine Plywood	Ply 2	18	HATCH DOUBLERS	1	0.48 SF	0.01 CF	0.27 lbf	0	0	0.27 lbf	0.00 SF	0.00 SF	0.35 lb
Original Design	1/2" Marine Plywood	Ply 2	2	KEEL WEB AFT	1	2.11 SF	0.04 CF	1.19 lbf	1	4	1.66 lbf	2.11 SF	8.45 SF	1.09 lb
Original Design	1/2" Marine Plywood	Ply 2	1	KEEL WEB BOW	1	2.95 SF	0.06 CF	1.66 lbf	1	4	2.31 lbf	2.95 SF	11.79 SF	1.52 lb
Original Design	1/2" Marine Plywood	Ply 2	22	TRANSOM PANEL	1	4.29 SF	0.09 CF	2.41 lbf	0	6	2.93 lbf	0.00 SF	25.74 SF	2.65 lb
Ply 2: 9					9	20.94 SF	0.44 CF	11.78 lbf			14.68 lbf	5.06 SF	109.17 SF	12.54 lb
Original Design	1/2" Hardwood Trim	Trim 0	98	TRANSOM CAP	1	0.47 SF	0.01 CF	0.26 lbf	0	3	0.29 lbf	0.00 SF	1.40 SF	0.32 lb
Trim 0: 1					1	0.47 SF	0.01 CF	0.26 lbf			0.29 lbf	0.00 SF	1.40 SF	0.32 lb
Original Design	3/8" Hardwood Trim	Trim 1	9	CASE AFT ENDS	2	0.30 SF	0.01 CF	0.25 lbf	0	0	0.25 lbf	0.00 SF	0.00 SF	0.33 lb
Original Design	3/8" Hardwood Trim	Trim 1	8	CASE FORE ENDS	2	0.35 SF	0.01 CF	0.29 lbf	0	0	0.29 lbf	0.00 SF	0.00 SF	0.38 lb
Original Design	3/8" Hardwood Trim	Trim 1	84	COAMING	1	1.85 SF	0.06 CF	1.56 lbf	0	6	1.79 lbf	0.00 SF	11.12 SF	1.83 lb
Original Design	3/8" Hardwood Trim	Trim 1	45	FLOOR BATTEN FORE	4	1.50 SF	0.05 CF	1.27 lbf	0	3	1.36 lbf	0.00 SF	4.50 SF	1.57 lb
Original Design	3/8" Hardwood Trim	Trim 1	44A	FLOOR BATTEN LONG	2	1.61 SF	0.05 CF	1.36 lbf	0	3	1.46 lbf	0.00 SF	4.84 SF	1.69 lb
Original Design	3/8" Hardwood Trim	Trim 1	44	FLOOR BATTEN SHORT	2	1.25 SF	0.04 CF	1.05 lbf	0	3	1.13 lbf	0.00 SF	3.75 SF	1.31 lb
Original Design	3/8" Hardwood Trim	Trim 1		KEEL WEB STIFFENERS	1	0.00 SF	0.00 CF	0.00 lbf	0	3	0.00 lbf	0.00 SF	0.01 SF	0.00 lb
Original Design	3/8" Hardwood Trim	Trim 1	100	SHEET SWIVEL SIDE PIECES	2	0.20 SF	0.01 CF	0.17 lbf	0	6	0.20 lbf	0.00 SF	1.23 SF	0.20 lb
Trim 1: 16					16	7.07 SF	0.22 CF	5.96 lbf			6.47 lbf	0.00 SF	25.45 SF	7.31 lb
Original Design	1/2" Hardwood Trim	Trim 2	17	BULKHEAD TOP EDGE	1	0.54 SF	0.02 CF	0.61 lbf	1	3	0.71 lbf	0.54 SF	1.62 SF	0.69 lb
Original Design	1/2" Hardwood Trim	Trim 2	75	FIDDLE	2	0.75 SF	0.03 CF	0.84 lbf	0	6	0.93 lbf	0.00 SF	4.50 SF	1.02 lb
Original Design	1/2" Hardwood Trim	Trim 2	19	FLOOR BATTEN	1	0.08 SF	0.00 CF	0.09 lbf	2	3	0.11 lbf	0.15 SF	0.23 SF	0.09 lb
Original Design	1/2" Hardwood Trim	Trim 2	41A	FLOOR RIB BATTEN	2	0.14 SF	0.01 CF	0.16 lbf	2	3	0.21 lbf	0.29 SF	0.43 SF	0.16 lb
Original Design	1/2" Hardwood Trim	Trim 2	40A	FLOOR RIB BATTEN	2	0.18 SF	0.01 CF	0.21 lbf	2	3	0.27 lbf	0.37 SF	0.55 SF	0.21 lb
Original Design	1/2" Hardwood Trim	Trim 2	39A	FLOOR RIB BATTEN	2	0.22 SF	0.01 CF	0.25 lbf	2	3	0.33 lbf	0.44 SF	0.67 SF	0.25 lb
Original Design	1/2" Hardwood Trim	Trim 2	38A	FLOOR RIB BATTEN	2	0.23 SF	0.01 CF	0.26 lbf	2	3	0.34 lbf	0.46 SF	0.70 SF	0.26 lb
Original Design	1/2" Hardwood Trim	Trim 2	37A	FLOOR RIB BATTEN	2	0.24 SF	0.01 CF	0.27 lbf	2	3	0.35 lbf	0.48 SF	0.72 SF	0.27 lb
Original Design	1/2" Hardwood Trim	Trim 2	36A	FLOOR RIB BATTEN	4	0.49 SF	0.02 CF	0.55 lbf	2	3	0.72 lbf	0.96 SF	1.47 SF	0.55 lb
Original Design	1/2" Hardwood Trim	Trim 2	35A	FLOOR RIB BATTEN	2	0.24 SF	0.01 CF	0.27 lbf	2	3	0.36 lbf	0.49 SF	0.73 SF	0.28 lb
Original Design	1/2" Hardwood Trim	Trim 2	34A	FLOOR RIB BATTEN	2	0.25 SF	0.01 CF	0.28 lbf	2	3	0.36 lbf	0.49 SF	0.74 SF	0.28 lb
Original Design	1/2" Hardwood Trim	Trim 2	33A	FLOOR RIB BATTEN	2	0.24 SF	0.01 CF	0.27 lbf	2	3	0.35 lbf	0.47 SF	0.71 SF	0.27 lb
Original Design	1/2" Hardwood Trim	Trim 2	32A	FLOOR RIB BATTEN	2	0.22 SF	0.01 CF	0.25 lbf	2	3	0.33 lbf	0.45 SF	0.67 SF	0.25 lb
Original Design	1/2" Hardwood Trim	Trim 2	31A	FLOOR RIB BATTEN	2	0.21 SF	0.01 CF	0.23 lbf	2	3	0.31 lbf	0.42 SF	0.63 SF	0.24 lb
Original Design	1/2" Hardwood Trim	Trim 2	30A	FLOOR RIB BATTEN	2	0.18 SF	0.01 CF	0.20 lbf	2	3	0.26 lbf	0.36 SF	0.53 SF	0.20 lb
Original Design	1/2" Hardwood Trim	Trim 2		FLOOR RIB BATTEN	2	0.10 SF	0.00 CF	0.11 lbf	2	3	0.15 lbf	0.20 SF	0.30 SF	0.11 lb
Original Design	1/2" Hardwood Trim	Trim 2	20	SEAT BATTEN	1	0.09 SF	0.00 CF	0.10 lbf	2	3	0.13 lbf	0.18 SF	0.26 SF	0.10 lb
Trim 2: 33					33	4.40 SF	0.18 CF	4.95 lbf			6.22 lbf	6.77 SF	15.45 SF	5.22 lb
Original Design	5/8" Hardwood Trim	Trim 3	60A	SEAT BATTEN	2	0.06 SF	0.00 CF	0.08 lbf	2	2	0.10 lbf	0.12 SF	0.12 SF	0.09 lb
Original Design	5/8" Hardwood Trim	Trim 3	60A	SEAT BATTEN	2	0.15 SF	0.01 CF	0.20 lbf	2	2	0.25 lbf	0.29 SF	0.29 SF	0.22 lb
Original Design	5/8" Hardwood Trim	Trim 3	59A	SEAT BATTEN	2	0.06 SF	0.00 CF	0.08 lbf	2	2	0.10 lbf	0.12 SF	0.12 SF	0.09 lb
Original Design	5/8" Hardwood Trim	Trim 3	59A	SEAT BATTEN	2	0.15 SF	0.01 CF	0.21 lbf	2	2	0.26 lbf	0.30 SF	0.30 SF	0.23 lb
Original Design	5/8" Hardwood Trim	Trim 3	58A	SEAT BATTEN	2	0.06 SF	0.00 CF	0.08 lbf	2	2	0.10 lbf	0.12 SF	0.12 SF	0.09 lb
Original Design	5/8" Hardwood Trim	Trim 3	58A	SEAT BATTEN	2	0.15 SF	0.01 CF	0.21 lbf	2	2	0.26 lbf	0.30 SF	0.30 SF	0.23 lb
Original Design	5/8" Hardwood Trim	Trim 3	57A	SEAT BATTEN	2	0.06 SF	0.00 CF	0.08 lbf	2	2	0.10 lbf	0.12 SF	0.12 SF	0.09 lb
Original Design	5/8" Hardwood Trim	Trim 3	57A	SEAT BATTEN	2	0.15 SF	0.01 CF	0.21						