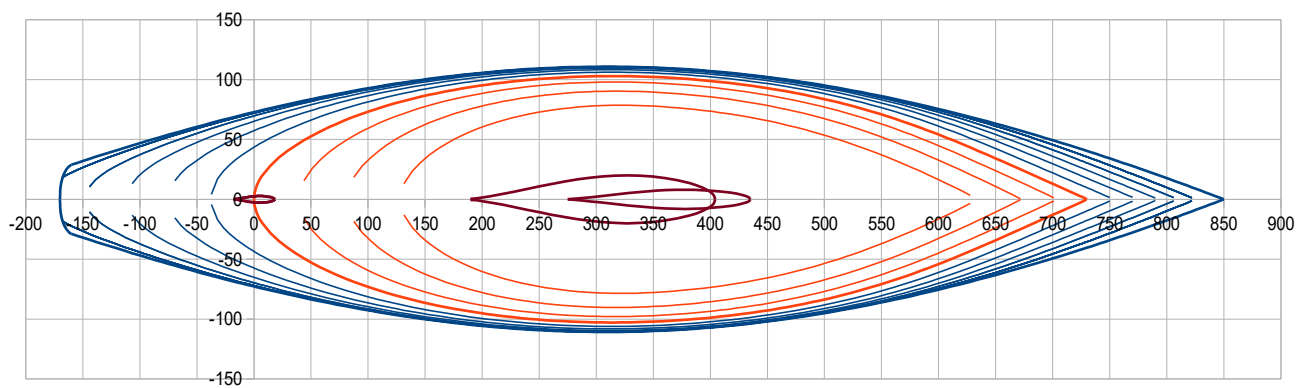
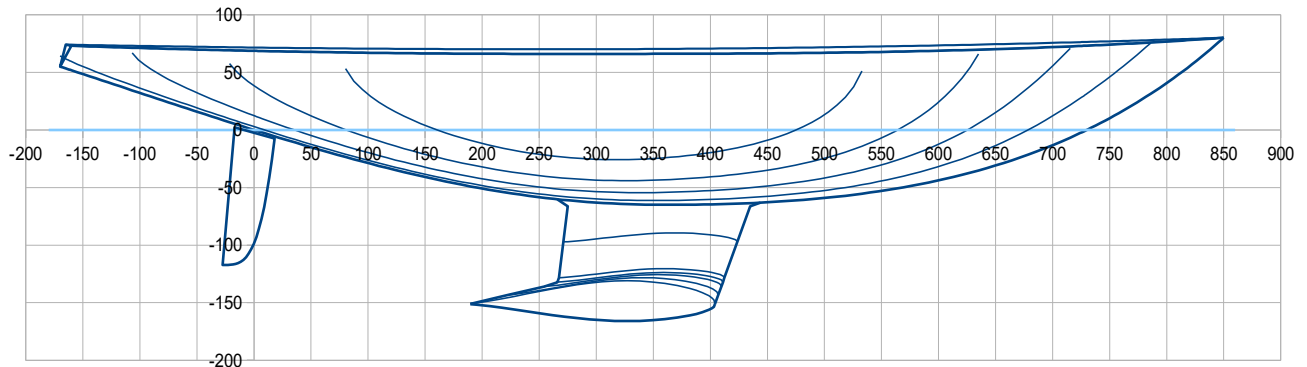


Minimum freeboard issue / the « Heel 30° » check

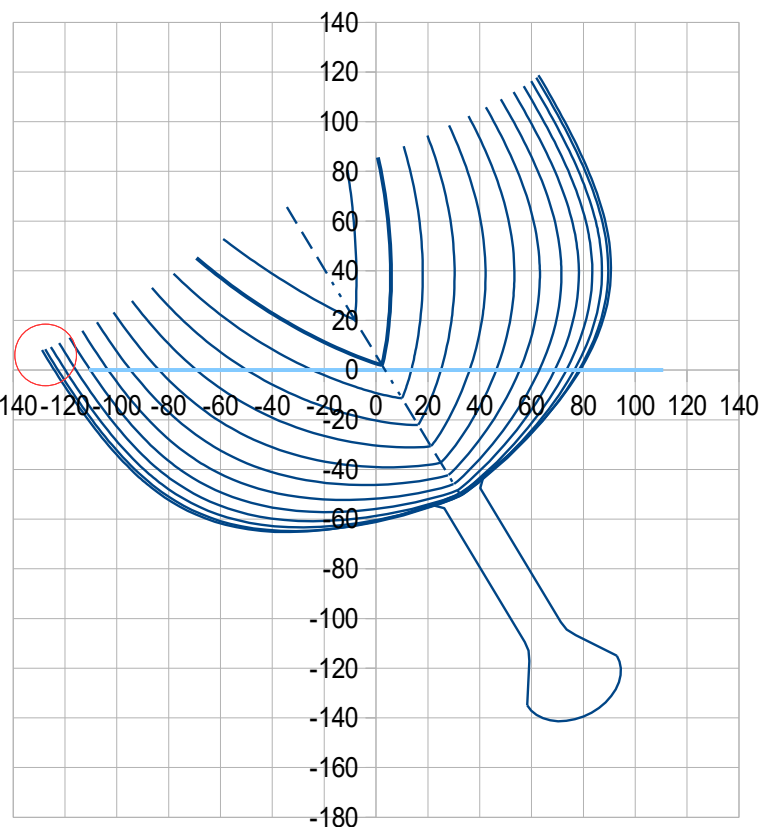
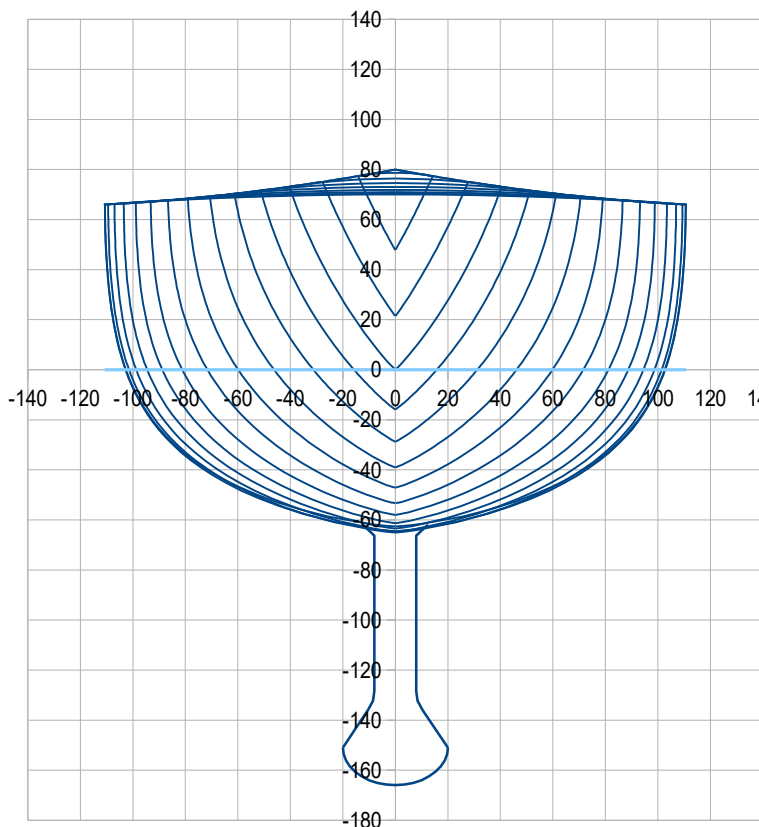
Example 1 : Classic 6m JI Loa 10,20 m B 2,22 m D : 4140 kg
Freeboard at 35% Lwl : 0,66 m



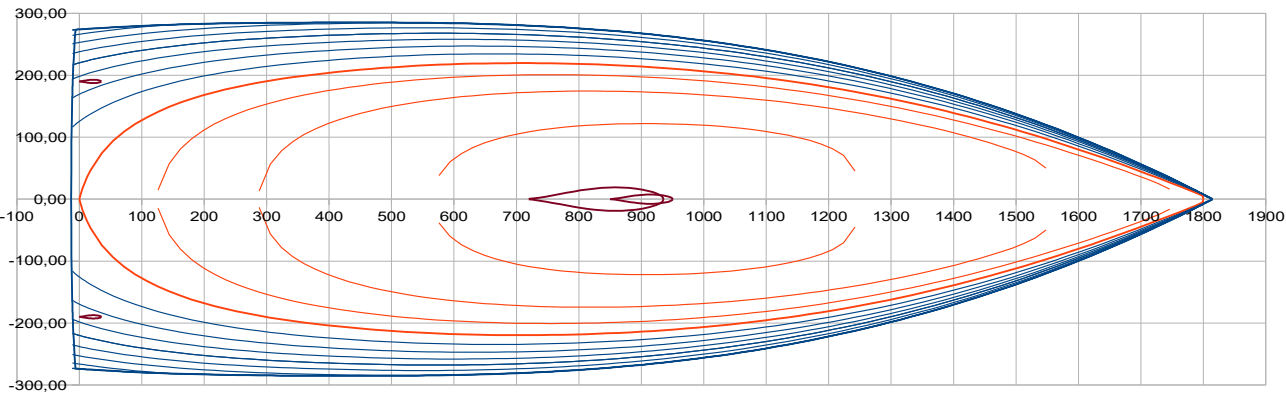
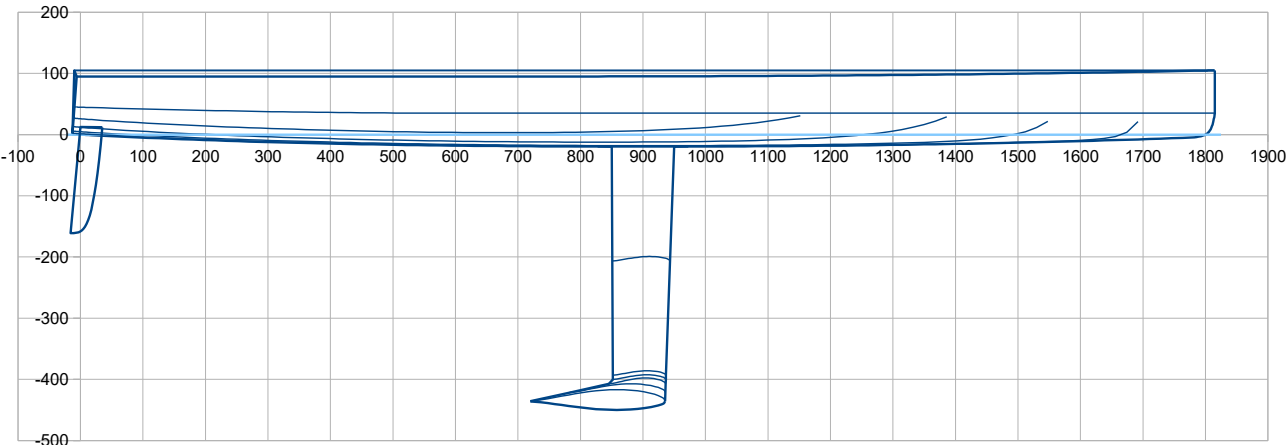
Heel 0°

>>>>

Hydrostatic equilibrium at Heel 30°
(obtained for height + 6,93 cm and trim -0,68°)



Example 2 : Imoca 60 Loa 18,28 m B 5,70 m D : 8040 kg
Freeboard at 35% Lwl : 0,95 m



Heel 0° >>>>

Hydrostatic equilibrium at Heel 30°
(obtained for height + 67,9 cm and trim -2,83°)

