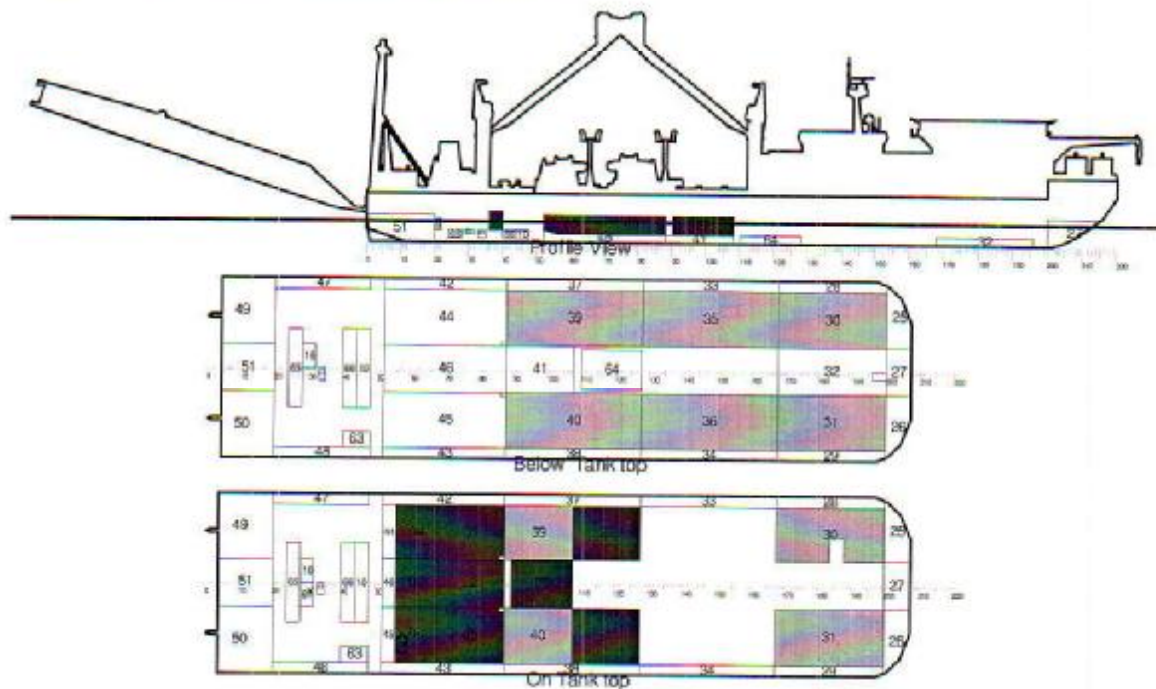




10.2. 02 - Ship in transit condition, dep.



Key

Key	Name	Density (t/m3)
	BW	1.0250
	FW	1.0000
	MDO	0.9000
	LO	0.9000
	TW	1.0000

Title	Frames	Cargo	% full	SG (t/m3)	Weight (t)	LCG (m)	TCG (m)	VCG (m)	FSM (t-m)	S M
Ballastwater										
30: II P2	168-200	BW	16.8	1.025	154.5	110.39	-9.10	0.41	1497.2	
31: II S2	168-200	BW	43.7	1.025	416.5	110.40	9.10	1.11	1497.2	
35: III P2	128-168	BW	44.6	1.025	167.0	88.80	-9.10	0.36	1871.6	
36: III S2	128-168	BW	70.3	1.025	263.0	88.80	9.10	0.56	1871.6	
39: IV P2	88-128	BW	72.8	1.025	570.0	62.74	-9.10	1.36	935.8	
40: IV S2	88-128	BW	47.2	1.025	370.0	64.80	9.10	0.79	1871.6	
Total Ballastwater					1941.1	82.92	0.74	0.93	9545.0	
Diesel oil										
01: V P3	68-88	MDO	98.0	0.900	350.4	46.77	-9.12	3.31	810.8	
02: V CL2	68-88	MDO	98.0	0.900	301.8	46.80	0.00	3.32	517.4	
03: V S3	68-88	MDO	98.0	0.900	350.4	46.77	9.12	3.31	810.8	
04: V P4	52-68	MDO	98.0	0.900	274.7	36.10	-9.10	3.35	857.3	
05: V CL3	52-68	MDO	98.0	0.900	235.4	36.10	0.00	3.35	413.9	
06: V S4	52-68	MDO	98.0	0.900	256.6	36.36	8.85	3.35	576.1	
07: MDO settl. tk.	36-40	MDO	98.0	0.900	23.3	22.80	-3.15	4.95	1.6	
08: MDO serv. tk.	36-40	MDO	98.0	0.900	14.9	22.80	-1.05	3.99	1.6	



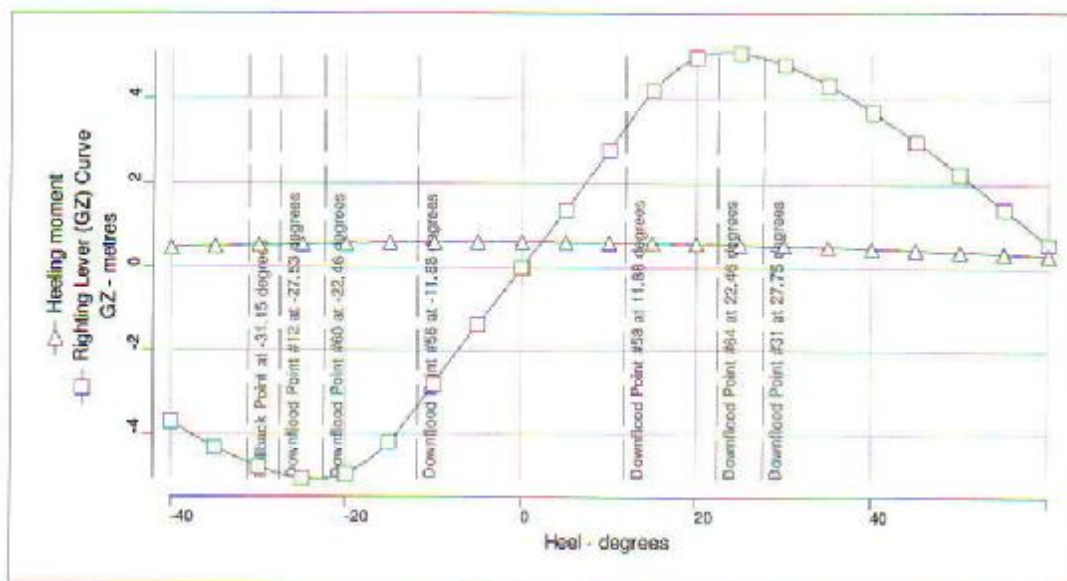
Title	Frames	Cargo	% full	SG (t/m3)	Weight (t)	LCG (m)	TCG (m)	VCG (m)	FSM (t-m)	S M
09: MDO serv. tk.	36-40	MDO	98.0	0.900	14.9	22.80	1.05	3.99	1.6	
Total Diesel oil					1822.2	41.63	-0.17	3.36	3791.3	
<i>Lubrication oil</i>										
15: LO Storage tk.	28-32	LO	98.0	0.900	9.1	18.00	-3.15	4.03	1.6	
Total Lubrication oil					9.1	18.00	-3.15	4.03	1.6	
<i>Fresh water</i>										
20: IV P3	108-128	FW	100.0	1.000	399.3	70.80	-9.10	3.35	913.0	
21: IV S3	108-128	FW	100.0	1.000	399.3	70.80	9.10	3.35	913.0	
22: IV CL3	90-108	FW	100.0	1.000	308.0	59.40	0.00	3.35	0.0	
23: Techn. water	20-22	TW	100.0	1.000	10.3	12.60	2.10	3.35	0.0	
Total Fresh water					1116.8	67.12	0.02	3.35	1825.9	
<i>Stores</i>										
Stores					50.0	65.00	0.00	10.00	0.0	
Total Stores					50.0	65.00	0.00	10.00	0.0	
<i>Provision, Dep.</i>										
Provision, Dep.					25.0	82.80	9.20	3.50	0.0	
Total Provision, Dep.					25.0	82.80	9.20	3.50	0.0	
<i>Crew + Effects</i>										
Crew + Effects					25.0	90.00	0.00	8.00	0.0	
Total Crew + Effects					25.0	90.00	0.00	8.00	0.0	
Lightweight					10174.6	62.48	-0.13	11.07	0.0	
Deadweight					4989.1	64.04	0.27	2.50	15163.8	
Total Displacement					15163.7	62.99	0.00	8.25	15163.8	
<i>Buoyancy</i>										
Buoyancy					15163.7	62.99	0.00	1.92	348034.5	
Total Buoyancy					15163.7	62.99	0.00	1.92	348034.5	

Drafts at equilibrium angle

Draft at LCF	3.774 metres
Draft aft at marks	3.773 metres
Draft fwd at marks	3.774 metres
Draft at AP	3.773 metres
Draft at FP	3.774 metres
Mean draft at midships	3.774 metres

Hydrostatics at equilibrium angle

Density of water	1.0250 tonnes/cu.m
Heel to starboard	0.00 degrees
Trim	No trim
KG	8.250 metres
FSC	1.000 metres
KGf	9.250 metres
GMt	15.623 metres
BMt	22.952 metres
BMI	362.661 metres
Waterplane area	4040.49 sq.metres
LCF	63.132 metres
TCF	0.000 metres
TPC	41.415 tonnes/cm
MTC	416.611 tonnes-m/cm
Shell thickness	21.100 mm



Righting Lever (GZ) Curve

Heel to Stbd (deg)	GZ (m)	GM (m)	Trim (m)	WLrad (m)	Freeboard (m)	Unprotected (m)	Protected (m)	Heeling moment (m)
-40.00	-3.7077	-7.4971	-1.210	1.463	4.83[0]	-6.84[56]	-3.80[3]	0.4708
-35.00	-4.3207	-6.1980	-0.879	1.956	4.98[0]	-5.69[56]	-2.63[3]	0.5035
-30.00	-4.7969	-4.3867	-0.560	2.431	5.08[0]	-4.51[56]	-1.52[20]	0.5323
-25.00	-5.0720	-1.4556	-0.317	2.874	5.12[0]	-3.31[56]	-0.46[20]	0.5570
-20.00	-4.9672	4.7055	-0.163	3.280	5.10[0]	-2.12[56]	0.65[20]	0.5775
-15.00	-4.1904	12.7777	-0.091	3.595	5.05[0]	-0.88[56]	1.86[20]	0.5937
-10.00	-2.7947	16.3193	-0.045	3.705	5.14[0]	0.53[56]	3.23[20]	0.6053
-5.00	-1.3822	15.8169	-0.012	3.757	5.20[0]	1.96[56]	4.62[20]	0.6123
0.00	-0.0011	15.6219	0.001	3.774	5.23[11]	3.37[57]	5.99[25]	0.6146
5.00	1.3801	15.8171	-0.012	3.757	3.81[10]	1.96[58]	4.70[4]	0.6123
10.00	2.7926	16.3197	-0.045	3.705	2.36[10]	0.53[58]	3.38[4]	0.6053
15.00	4.1884	12.7782	-0.091	3.595	0.91[10]	-0.88[58]	2.05[4]	0.5937
20.00	4.9652	4.7062	-0.163	3.280	-0.37[10]	-2.12[58]	0.89[4]	0.5775
25.00	5.0701	-1.4547	-0.317	2.874	-1.63[10]	-3.31[58]	-0.25[4]	0.5570
30.00	4.7950	-4.3856	-0.560	2.431	-2.91[10]	-4.51[58]	-1.38[4]	0.5323
35.00	4.3190	-6.1967	-0.879	1.956	-4.19[10]	-5.69[58]	-2.52[4]	0.5035
40.00	3.7061	-7.4957	-1.210	1.463	-5.44[10]	-6.84[58]	-3.64[4]	0.4708
45.00	3.0011	-8.3738	-1.536	0.960	-6.65[10]	-7.93[58]	-4.74[4]	0.4346
50.00	2.2332	-8.9838	-1.854	0.449	-7.82[10]	-8.97[58]	-5.80[4]	0.3951
55.00	1.4220	-9.4028	-2.161	-0.065	-8.93[10]	-9.94[58]	-6.82[4]	0.3525
60.00	0.5821	-9.6724	-2.452	-0.578	-9.97[10]	-10.84[58]	-7.78[4]	0.3073

Generic heeling lever

Property	Value	Units
Area to leeward (Area A)	0.22820	m-radians
Area to windward (Area C)	0.01205	m-radians
Area A+B	0.34273	m-radians
Area B+C	0.13689	m-radians
Gust angle	2.236	degrees
Rollback angle	33.389	degrees
Steady state angle	2.236	degrees
Max. angle to leeward	11.885	degrees

Mobile Offshore Drilling Units

#	Criterion	Actual Value	Critical Value	Critical KGf	Critical GMf
1	MODU Intact Stability Weather Criterion	2.504	1.400	16.300	8.571
2	Protected Openings not immersed	5.985	0.000	25.593	-0.721
	Critical			16.300	8.571
	Actual			9.250	15.622

Condition complies with the regulations

Immersion Particulars

Type	Point #	X position (m)	Y position (m)	Z position (m)	Ht. above WL (m)	Flood Angle (deg)	Downflood Compartment
Unprotected	58	5.190	16.000	7.140	3.366	11.885	WR-A1
Protected	20	116.000	-15.500	9.760	5.987	-22.946	30
Deck Edge	10	2.000	16.000	9.000	5.226	18.558	