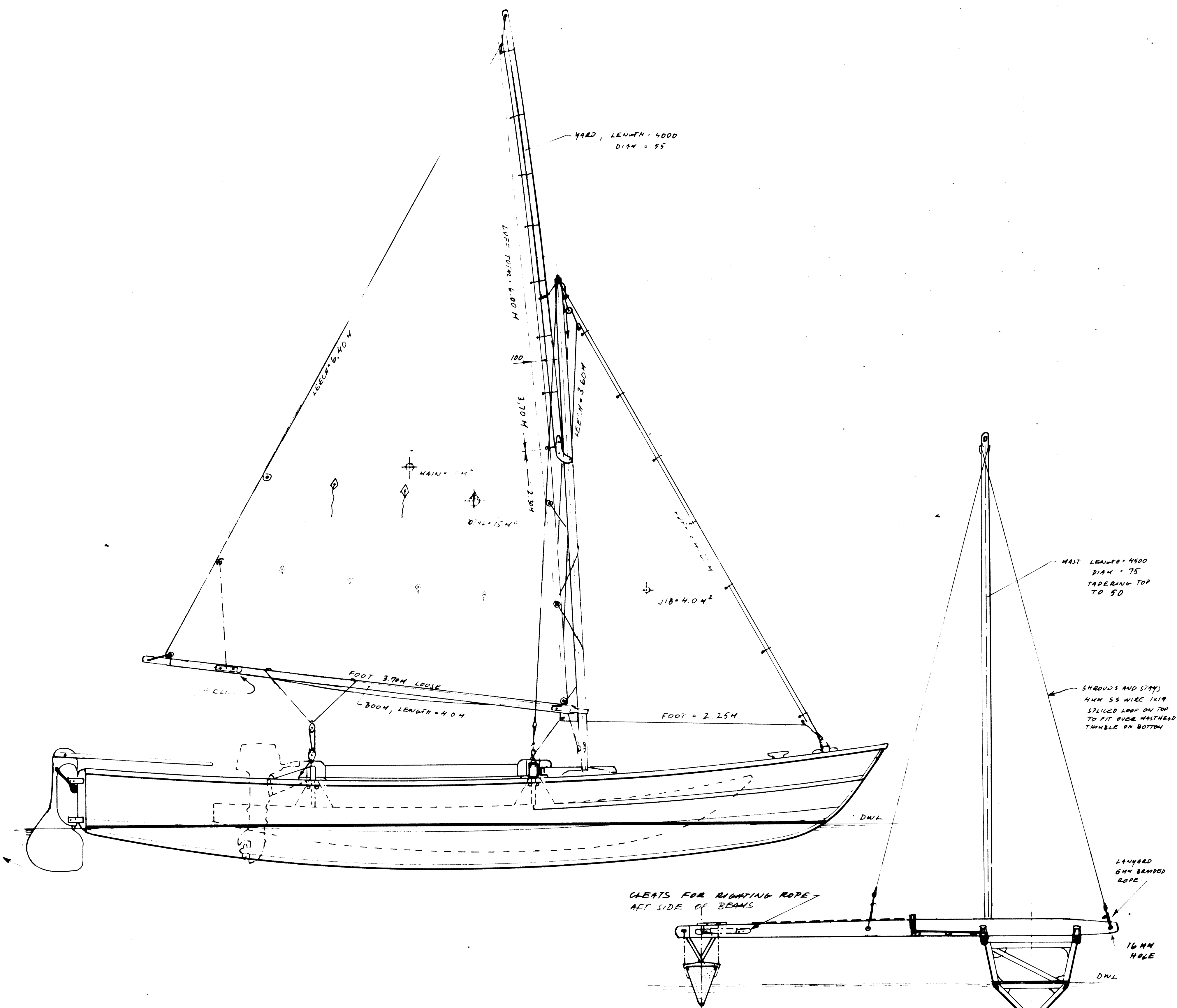


FAO copyright and disclaimer notices

This information product is intended to be used by anyone who wants to build a boat to a particular and suitable FAO design, it being understood that it is the responsibility of the intended user regarding the selection of a vessel design on the basis of its suitability for the intended fishery, sea state and weather and the availability of suitable construction material and building capability. Furthermore, it is the responsibility of the intended user to comply with national legislation for authorization to construct a fishing vessel and obtain approval of technical specifications. It being noted that the application to build a vessel must be accompanied by the specifications of mandatory safety equipment and outfit. In the case there is no national legislation in place for the design, construction and equipment of vessels FAO recommends that the intended user applies appropriate international standards, such as the FAO/ILO/IMO Safety recommendations for decked fishing vessels of less than 12 metres in length and undecked fishing vessels.

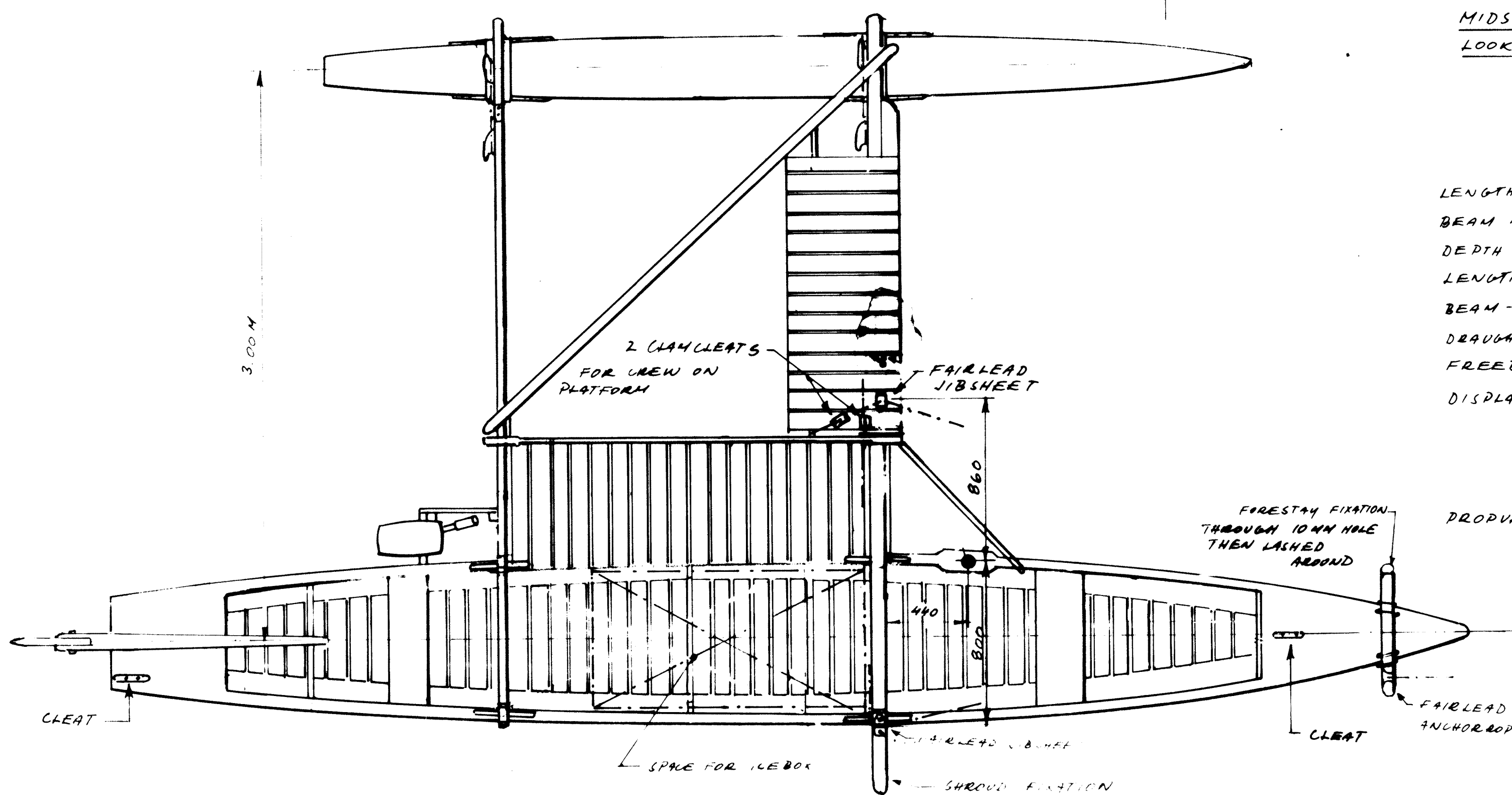
The designations employed and the presentation of material in this information product do not imply the expression of any opinion whatsoever on the part of the Food and Agriculture Organization of the United Nations (FAO) concerning the legal or development status of any country, territory, city or area or of its authorities, or concerning the delimitation of its frontiers or boundaries. The mention of specific companies or products of manufacturers, whether or not these have been patented, does not imply that these have been endorsed or recommended by FAO in preference to others of a similar nature that are not mentioned.

All rights reserved. FAO encourages the reproduction and dissemination of material in this information product. Non-commercial uses will be authorized free of charge, upon request. Reproduction for resale or other commercial purposes, including educational purposes, may incur fees. Applications for permission to reproduce or disseminate FAO copyright materials, and all queries concerning rights and licences, should be addressed by e-mail to copyright@fao.org or to the Chief, Publishing Policy and Support Branch, Office of Knowledge Exchange, Research and Extension, FAO, Viale delle Terme di Caracalla, 00153 Rome, Italy.



CLEATS FOR RIGHTING ROPE
AFT SIDE OF BEAMS

MIDSHIP SECTION
LOOKING FORWARD



MAIN DIMENSIONS

LENGTH OVER ALL	7.10 M	23'4"
BEAM MAXIMUM	4.10 M	
DEPTH MOULDED (HULL)	0.75 M	
LENGTH - DNL	6.60 M	
BEAM - DNL	0.69 M	
DRAUGHT - DNL	0.39 M	
FREEBOARD, MIN. - DNL	0.40 M	
DISPLACEMENT	EMPTY	LOADED (DNL)
HULL -	175 kg	460 kg
OUTRIGGER	45 "	55 "
TOTAL	220 kg	515 kg

PROPULSION: SAIL = 15 M²
 AUXILIARY OUTBOARD MOTOR
 2-4 HP, LONGSHAFT 20'
 FISHING METHODS: HANDLINING,
 TROLLING, DEEP SEA SHELL LURE
 CREW: 2-3



SAFETY FEATURES: THE CRAFT CAN, AFTER CAPSIZE, BE RIGHTED BY TWO MEN STANDING ON THE MAIN HULL USING ROPES FROM OUTRIGGER. BUILT IN BUOYANCY BLOCKS WILL MAKE THE CRAFT FLOAT SUFFICIENTLY HIGH TO PERMIT BAILING THE CRAFT DRY WITH A BUCKET.



7.1 M SINGLE OUTRIGGER CANOE

GENERAL ARRANGEMENT

SCALE: 1:20	DESIGN:	DRAWN:
DESIGN: P. OUL/DRAWN	KIR-BA 1	
GRIMLITO, JAN-88		

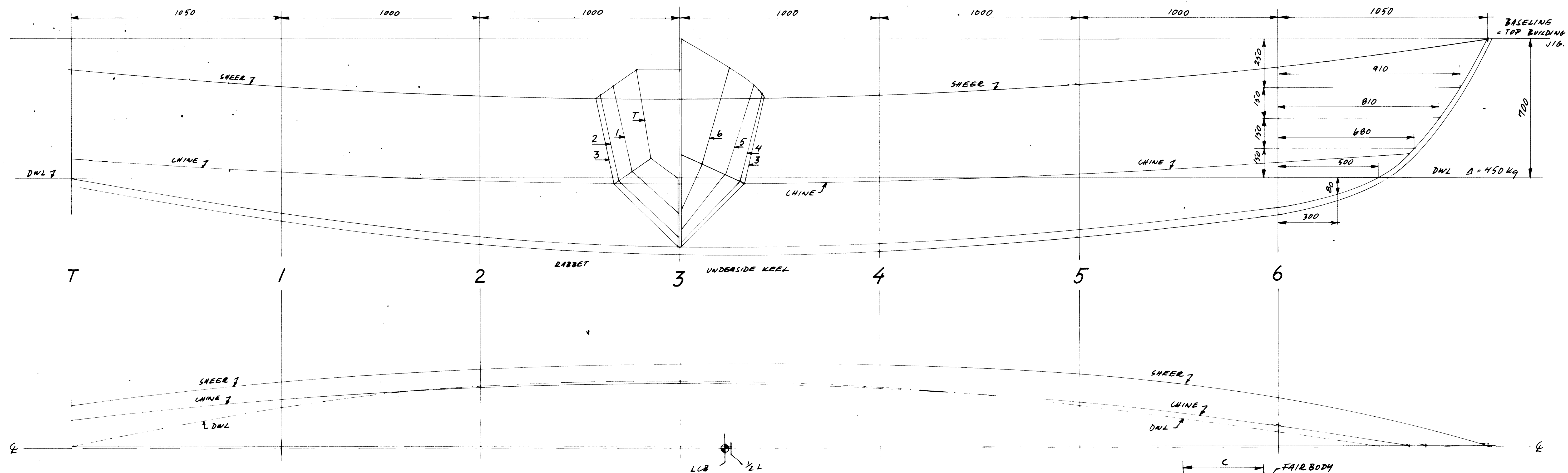
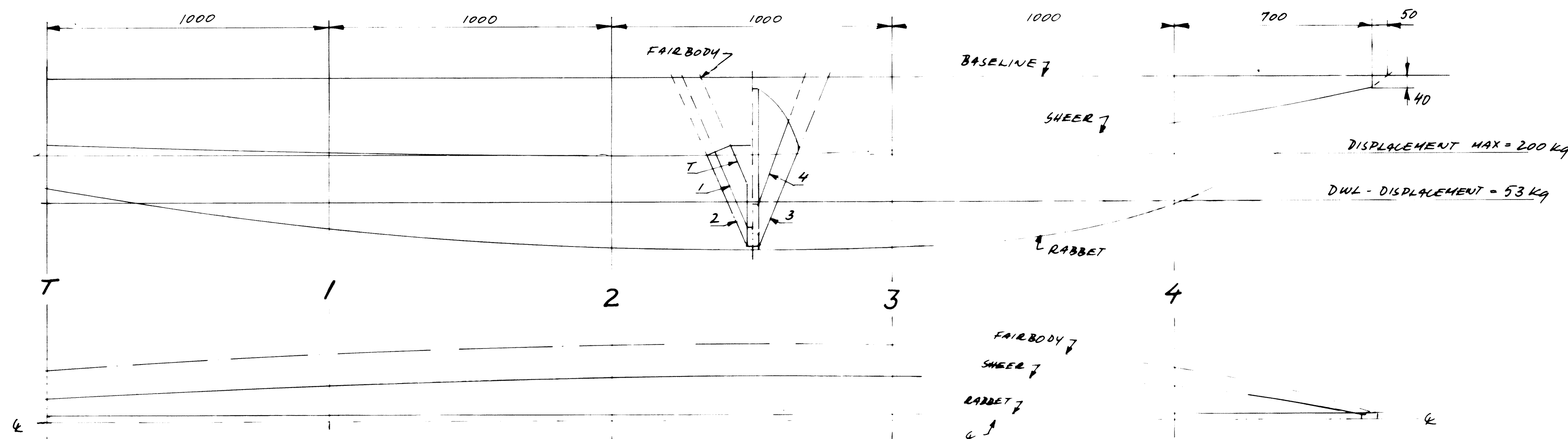
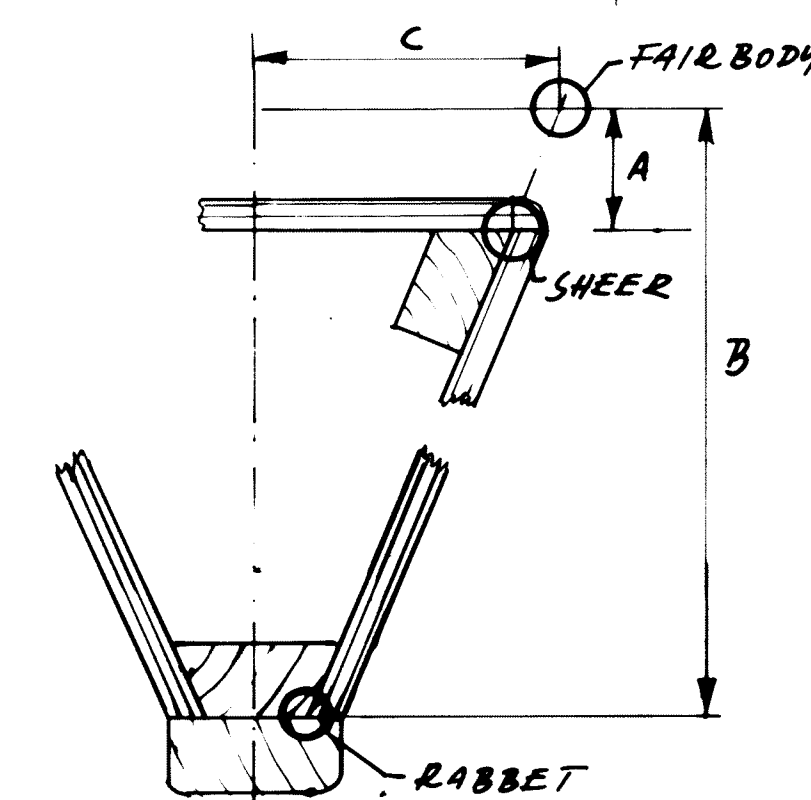


TABLE OF OFFSET - HULL							
IN MILLIMETER TO INSIDE PLANKING							
	T	1	2	3	4	5	6
HEIGHT ABOVE BASELINE - SHEER	155	237	284	295	280	230	140
" " " CHINE	600	665	710	725	710	675	618
" " " RABBIT	700	875	992	1040	1021	951	845
HALF BREADTH FROM 1/2 SHEER	215	330	395	420	415	368	248
" " " CHINE	140	235	305	324	298	225	105
" " " RABBIT	10	10	10	10	10	10	10

TABLE OF OFFSET - OUTRIGGER					
IN MILLIMETER TO INSIDE PLANKING					
	T	1	2	3	4
HEIGHT BASELINE - SHEER A	248	268	274	258	181
" " " RABBIT B	378	570	640	632	488
HALF BREADTH 1/2 - FAIRBODY C	174	260	290	286	226
" " " RABBIT D	12	12	12	12	12

NOTE: OUTRIGGER IS THE SAME AS FOR KIR-4



OUTRIGGER

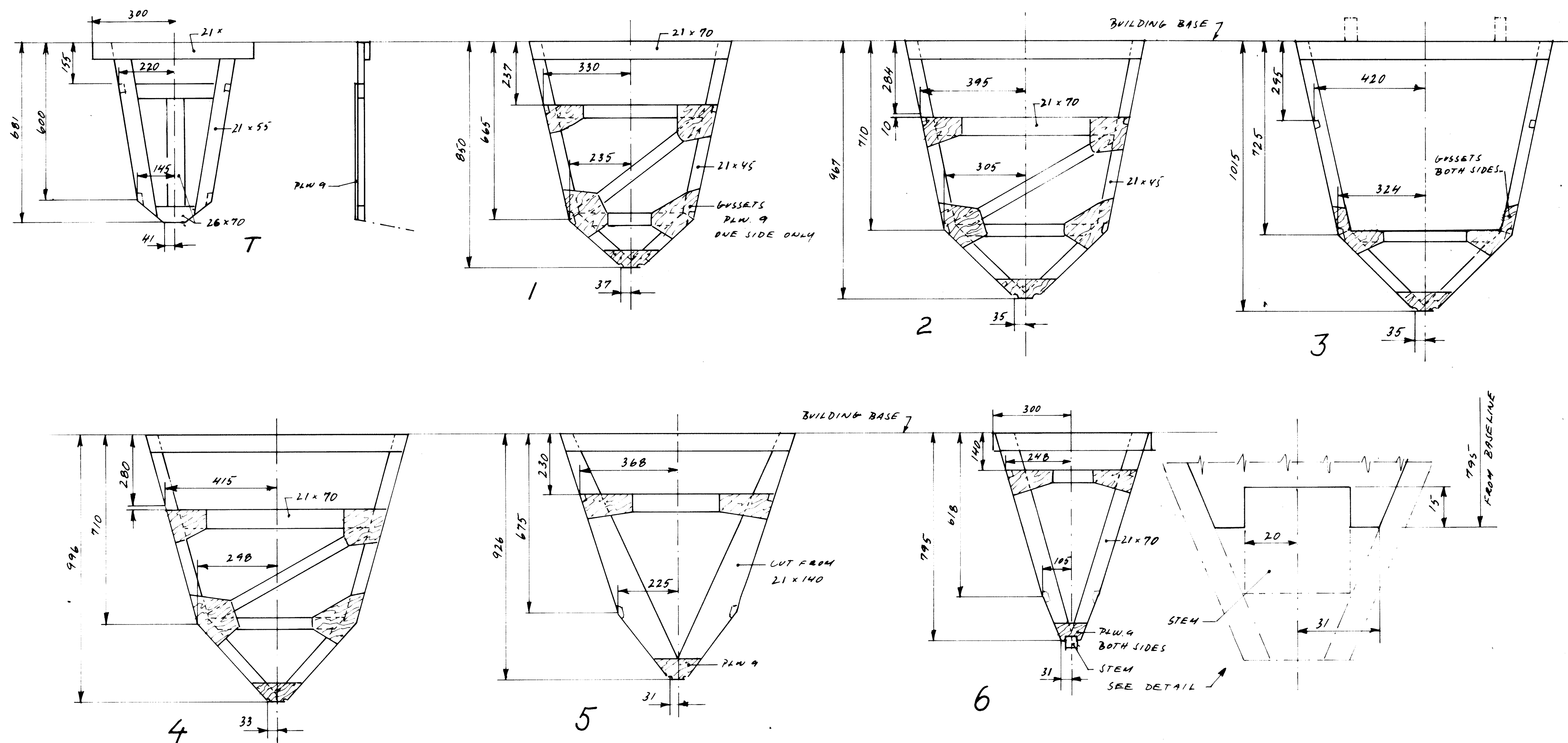
MAIN DIMENSIONS		HULL	OUTRIGGER
LENGTH OVER ALL	LOA	7.10 M	4.72 (15'6")
BEAM MOULDED	BMD	0.86 M	0.36 M
DEPTH MOULDED	DMD	0.74 M	0.36 M
CUBIC NUMBER, UNO = LOA x BMD x DMD		4.5 M ³	0.60 M ³
LENGTH DESIGNED WATERLINE DNL	L	6.6 M	4.08 M
BEAM DNL	B	0.69 M	0.20 M
DRAUGHT DNL	T	0.39 M	0.18 M
FREEBOARD MINIMUM DNL	F	0.40 M	0.18 M
DISPLACEMENT NO LOAD		180 kg	45 kg
SERVICE LOAD		270 kg	10 kg
DISPLACEMENT SERVICE DNL	Δ	450 kg	55 kg
COEFFICIENTS DNL:	4/B	9.6	20.4
	√(9/L)	1.5	1.12
PRISMATIC		0.53	0.57
1/2 ANGLE OF ENTRANCE		8°	5°
1/10 AT SERVICE SPEED = 6.0 KNOTS		1.29	1.64
ENGINE POWER OUTBOARD 2-V HP			



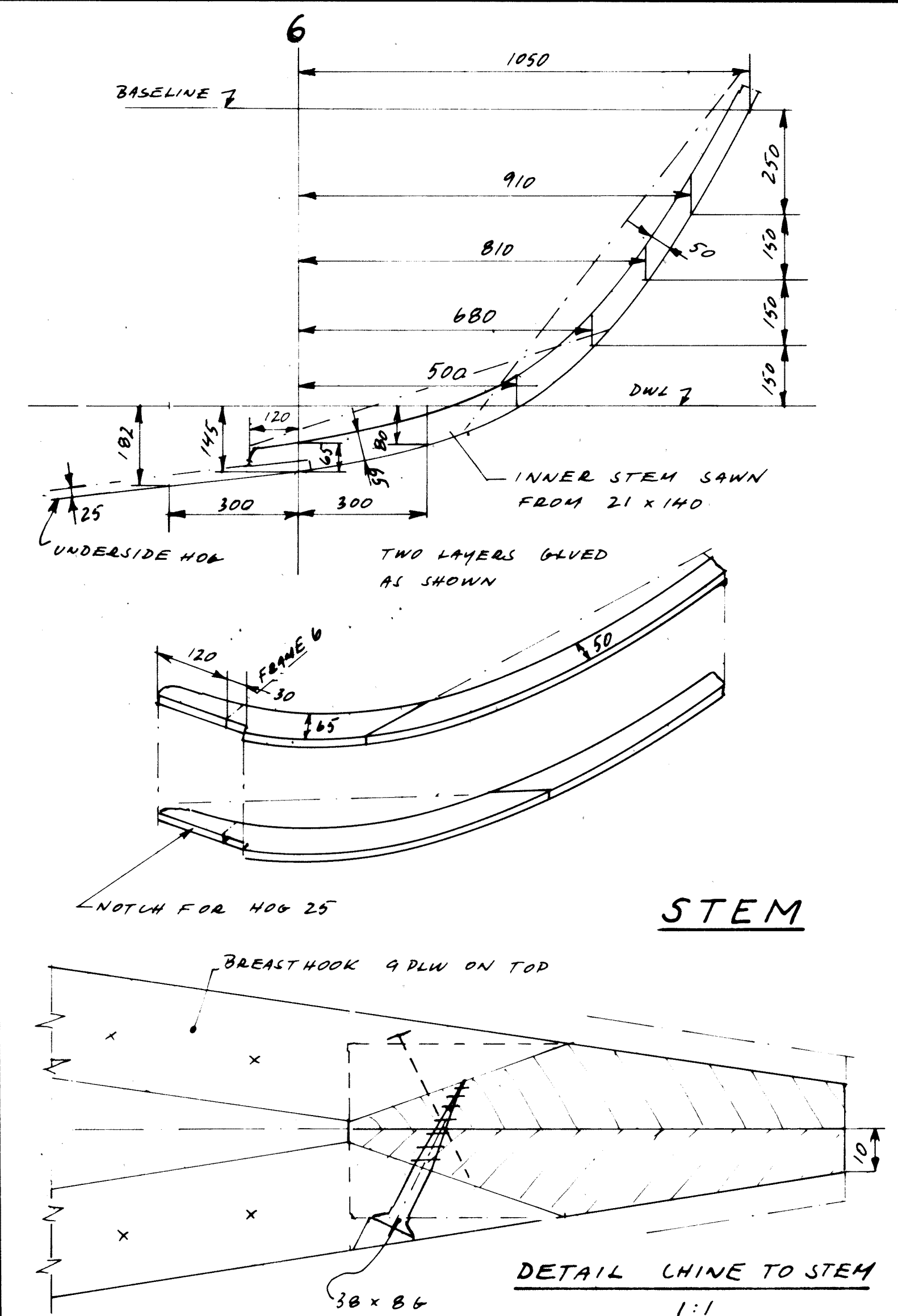
7.10 M SINGLE OUTRIGGER CANOE

LINES

SCALE - 1:10	DESIGN NO.	DEWA. NO.
DESIGN: G. Gaudin	KIR-8A	2
NORMA, 444-1986		

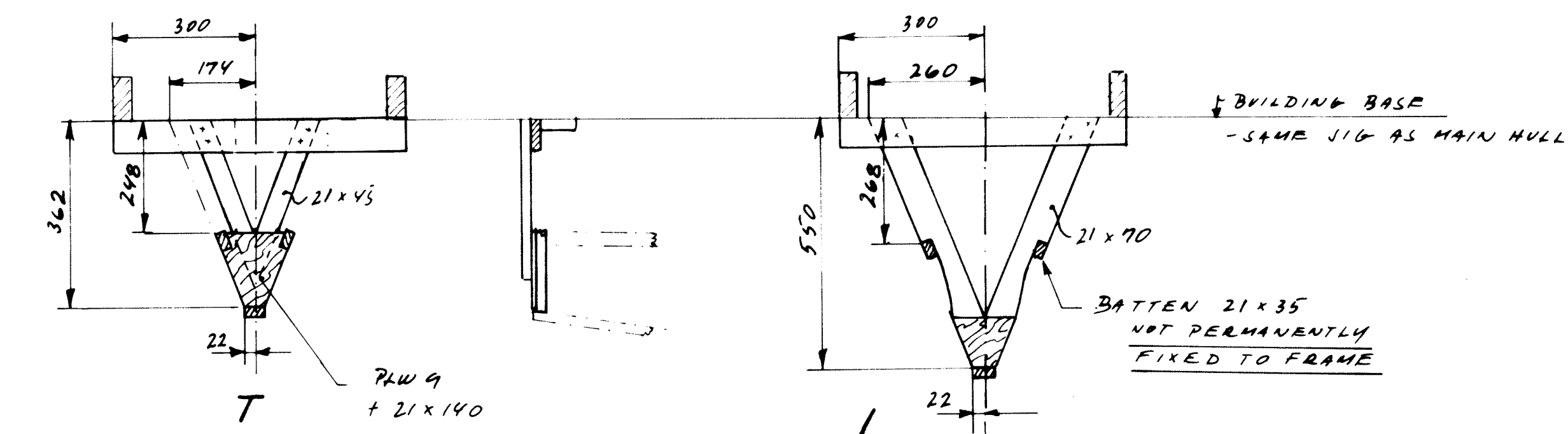


FRAMES - MAIN HULL
1:10

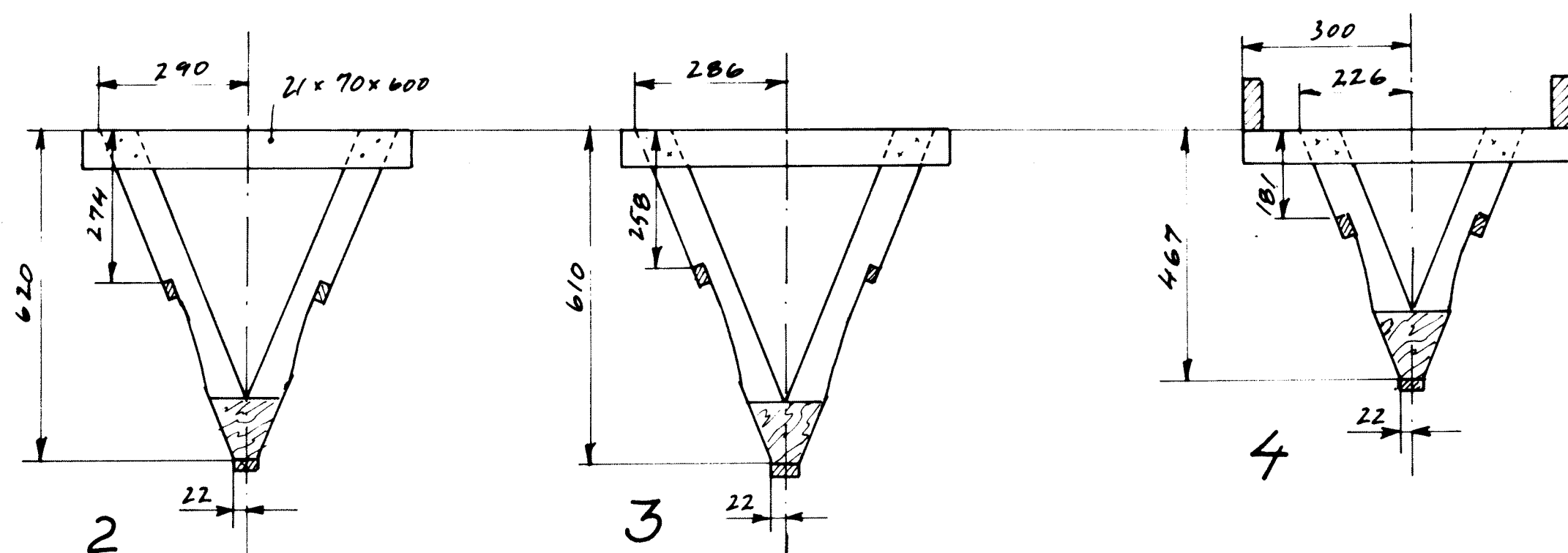


STEM

DETAIL LINE TO STEM
1:1



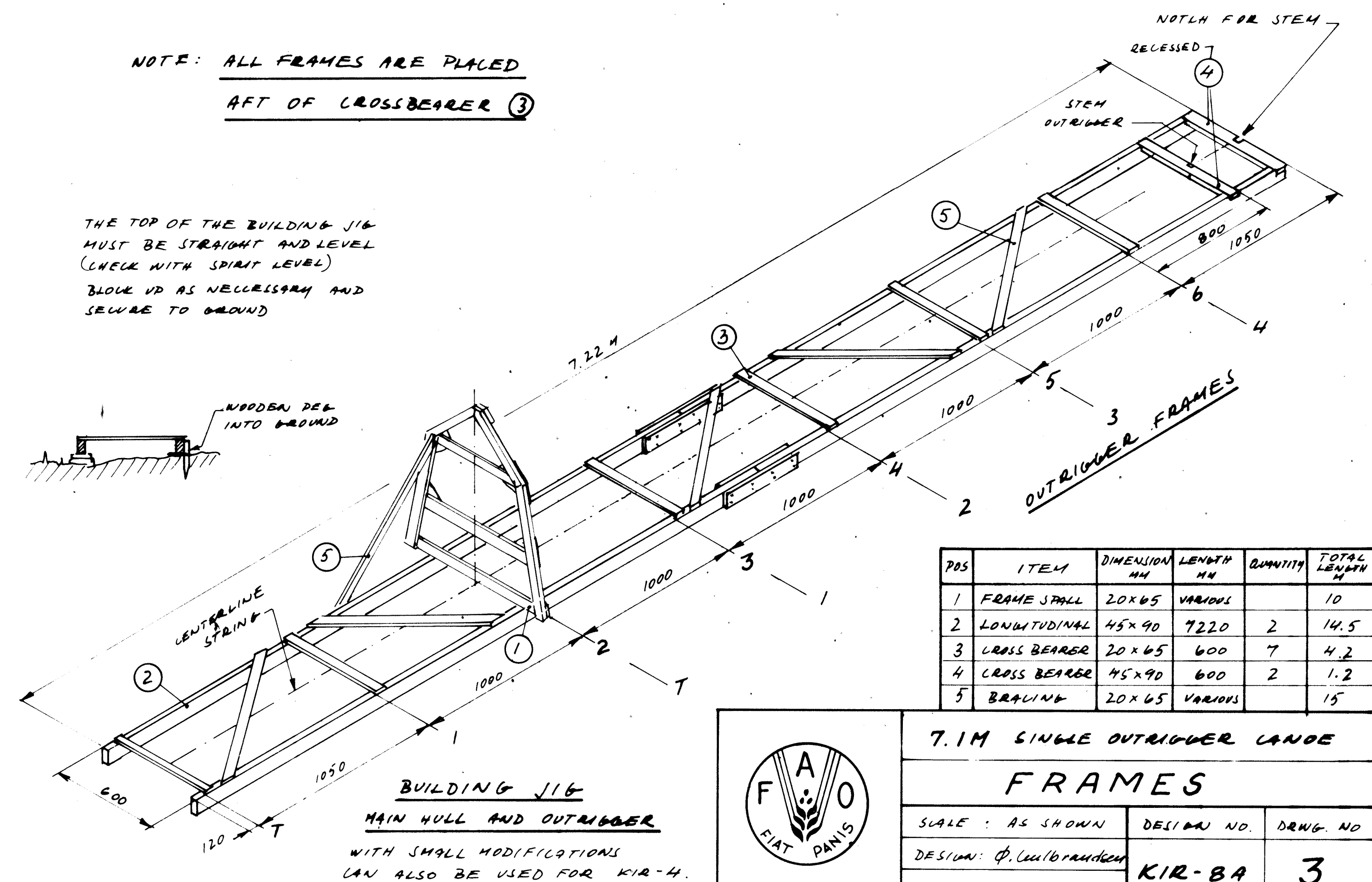
NOTE: ALL FRAMES (EXCEPT TRANSOM) ARE REMOVED.



FRAMES - OUTRIGGER (AMA)
1:10

NOTE: ALL FRAMES ARE PLACED
AFT OF CROSSBEARER ③

THE TOP OF THE BUILDING JIG
MUST BE STRAIGHT AND LEVEL
(CHECK WITH SPIRIT LEVEL)
BLOCK UP AS NECESSARY AND
SECURE TO GROUND

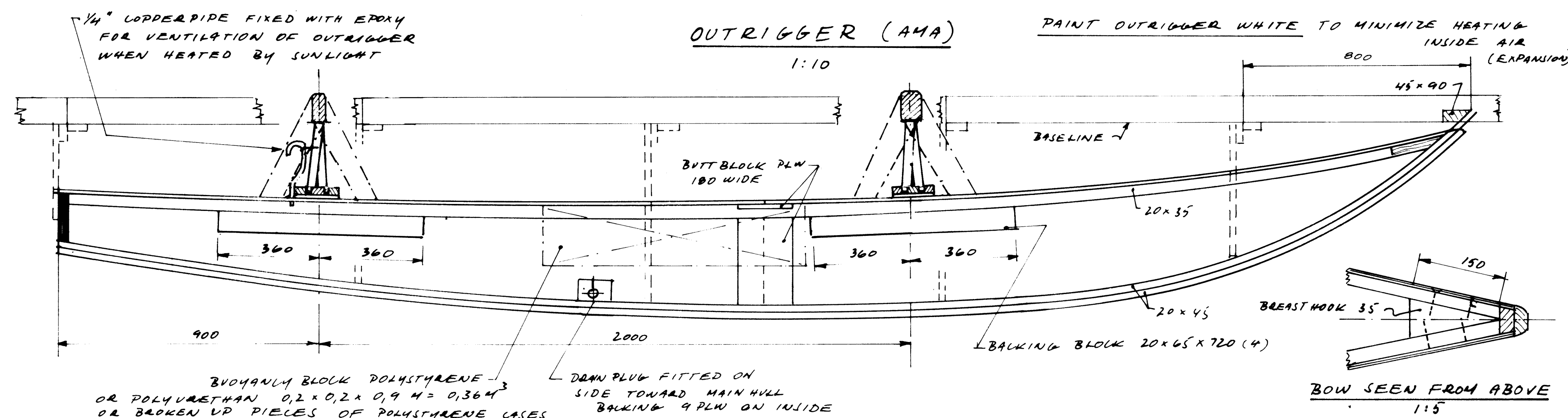
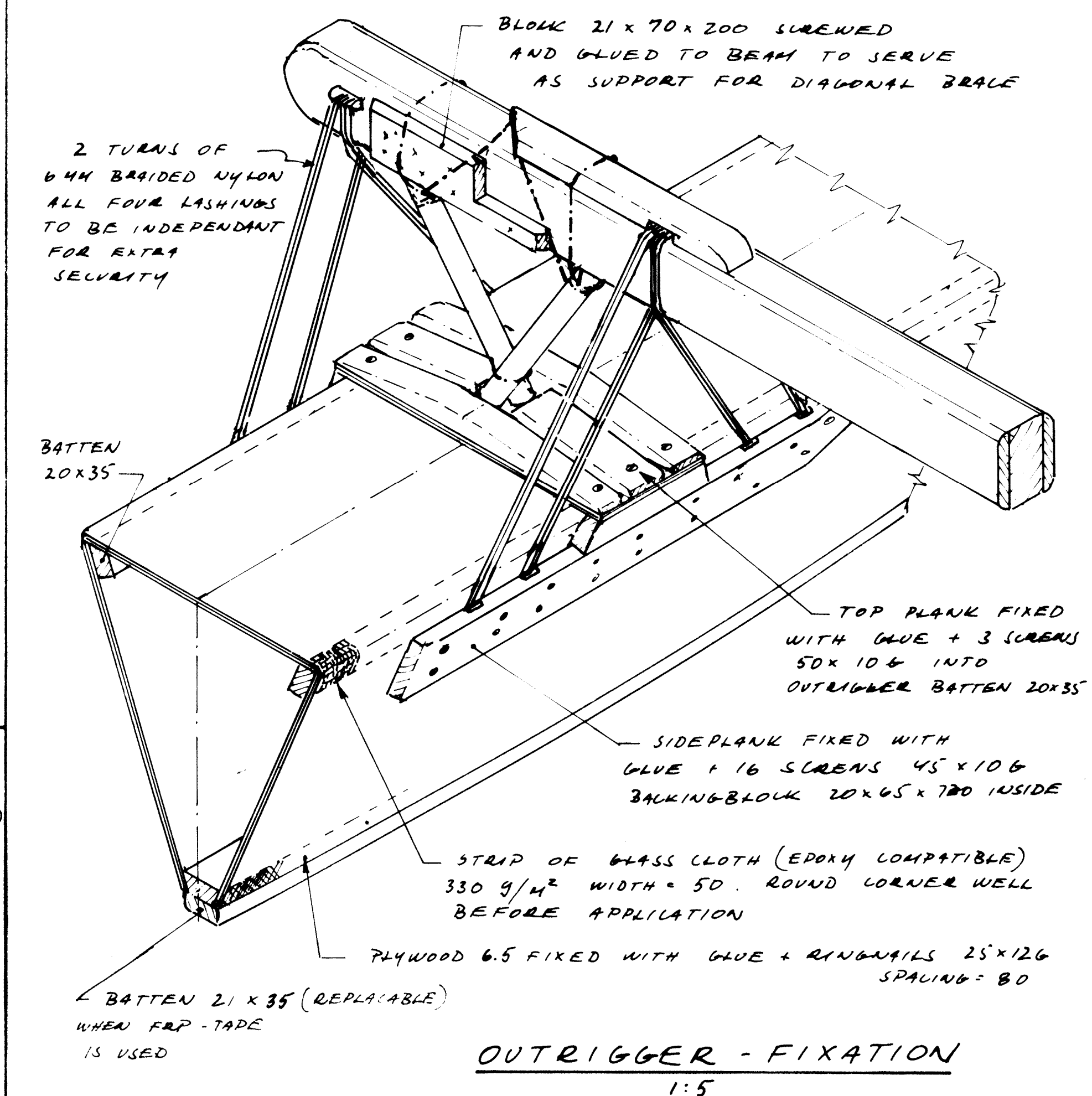
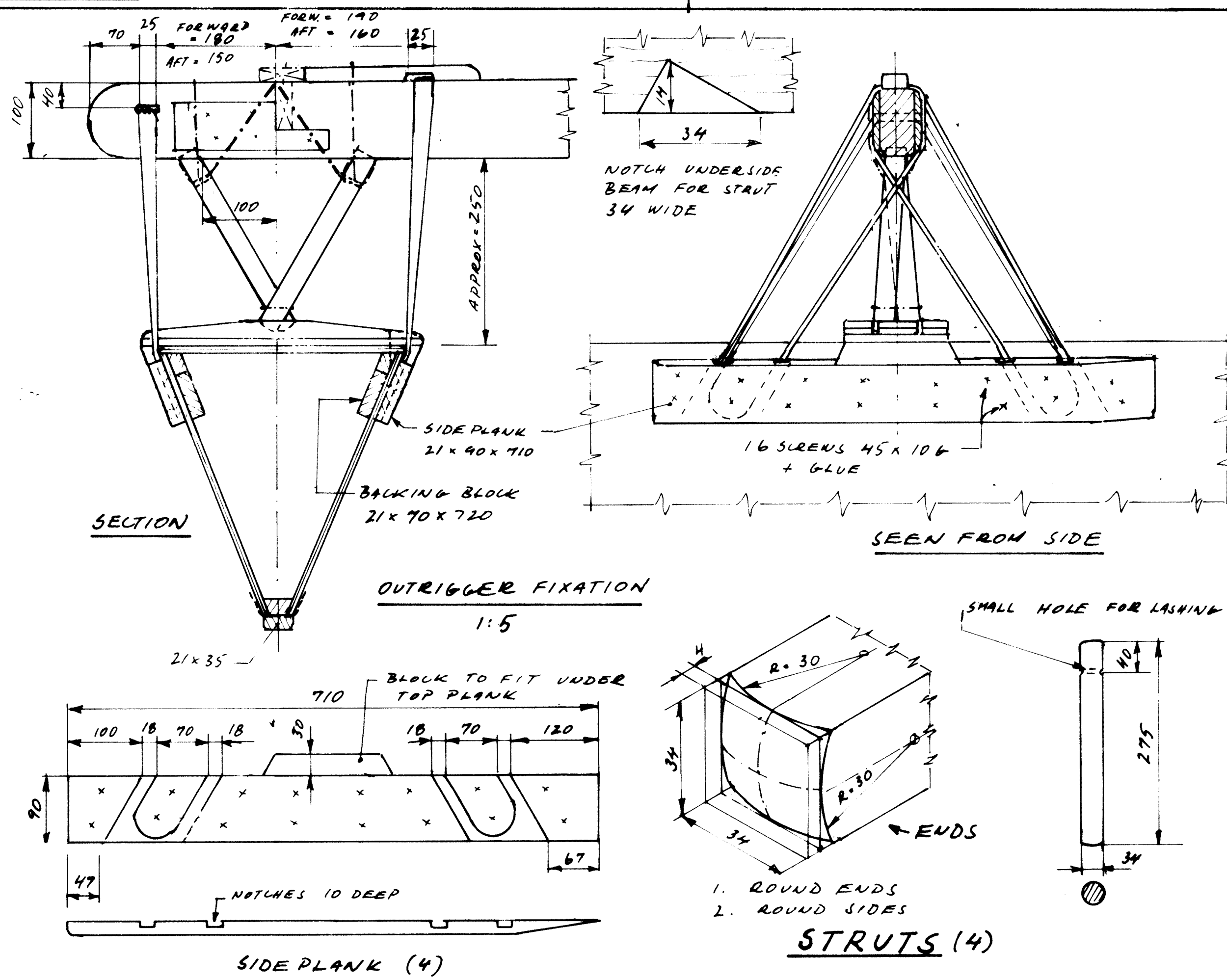
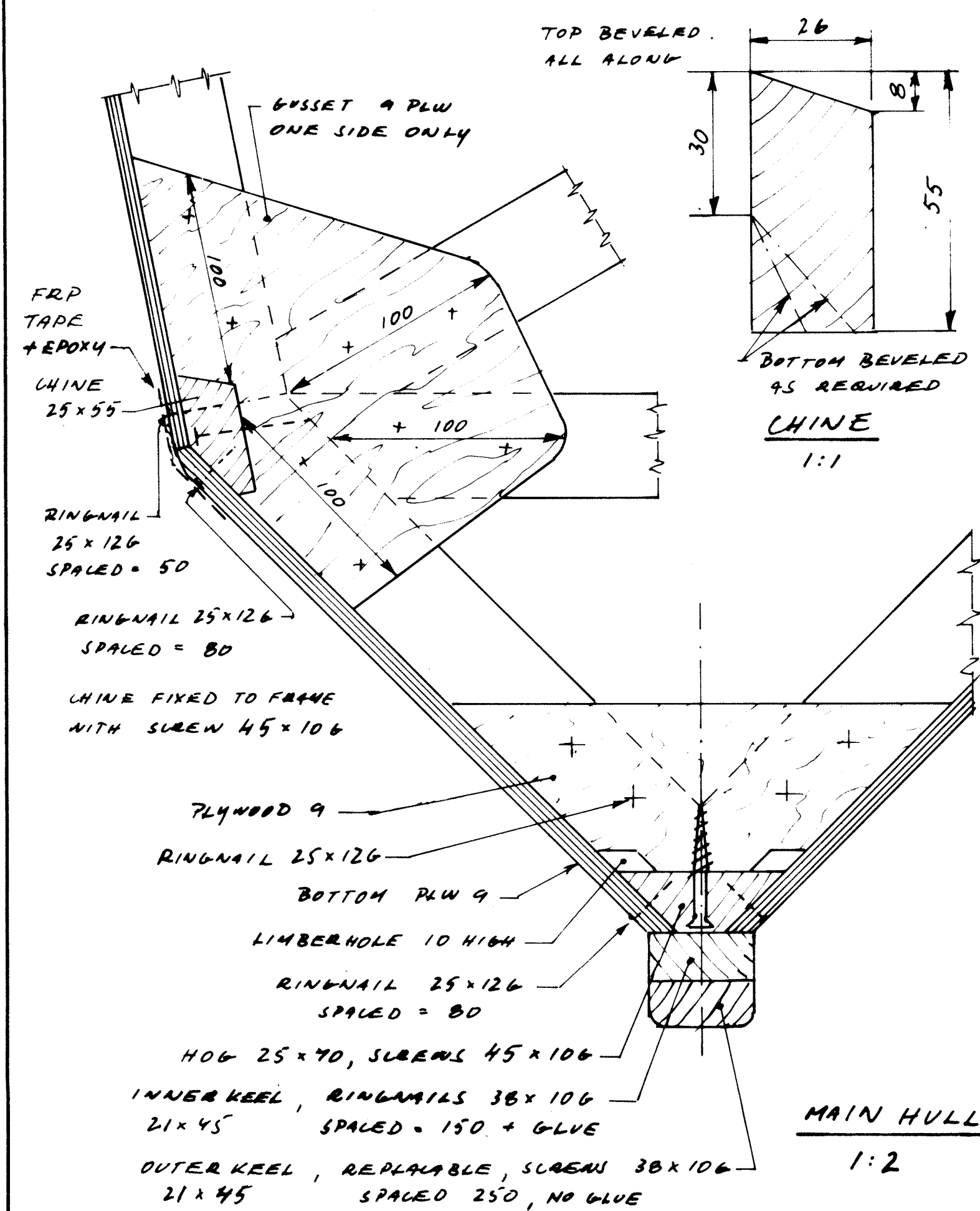
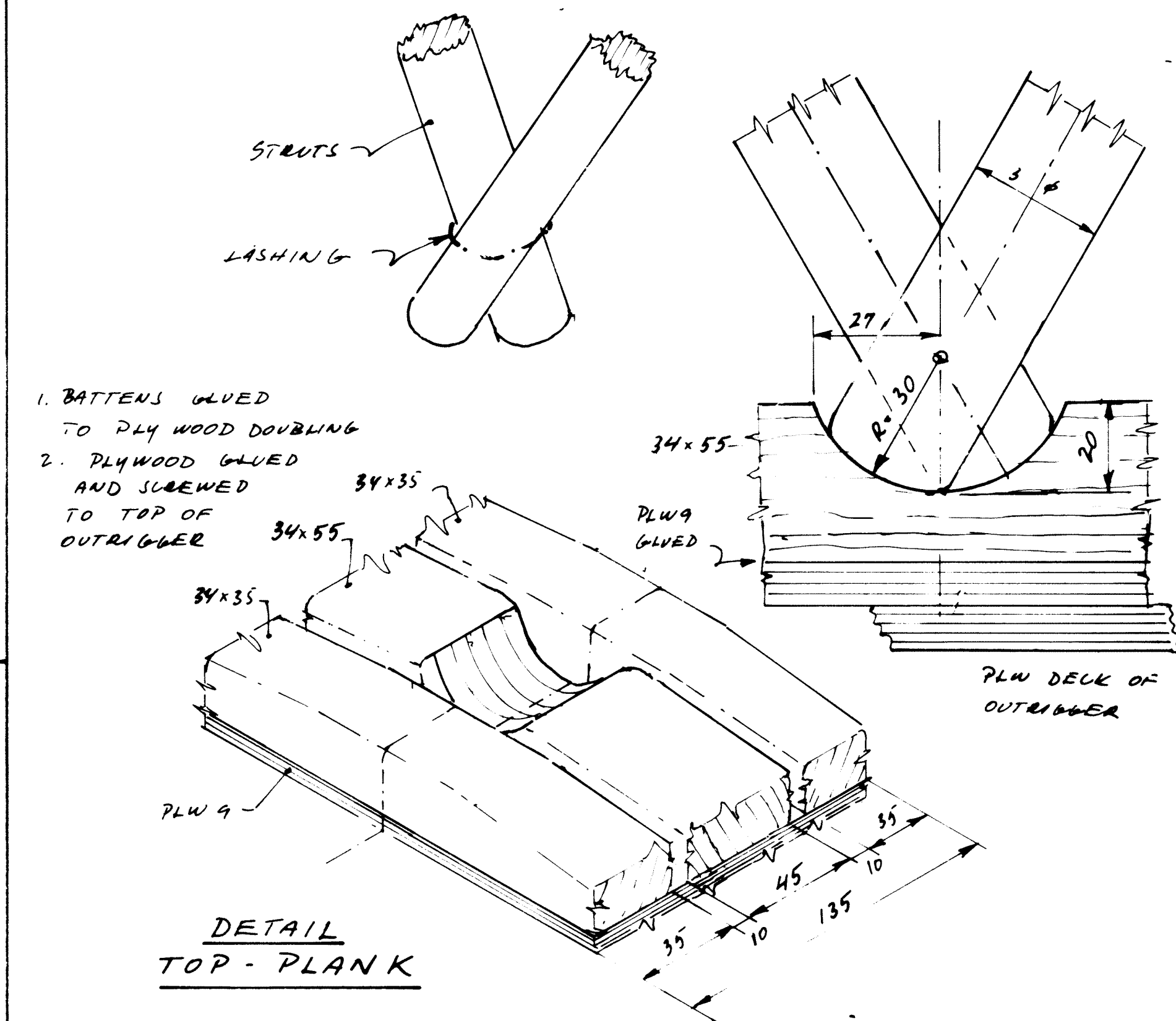
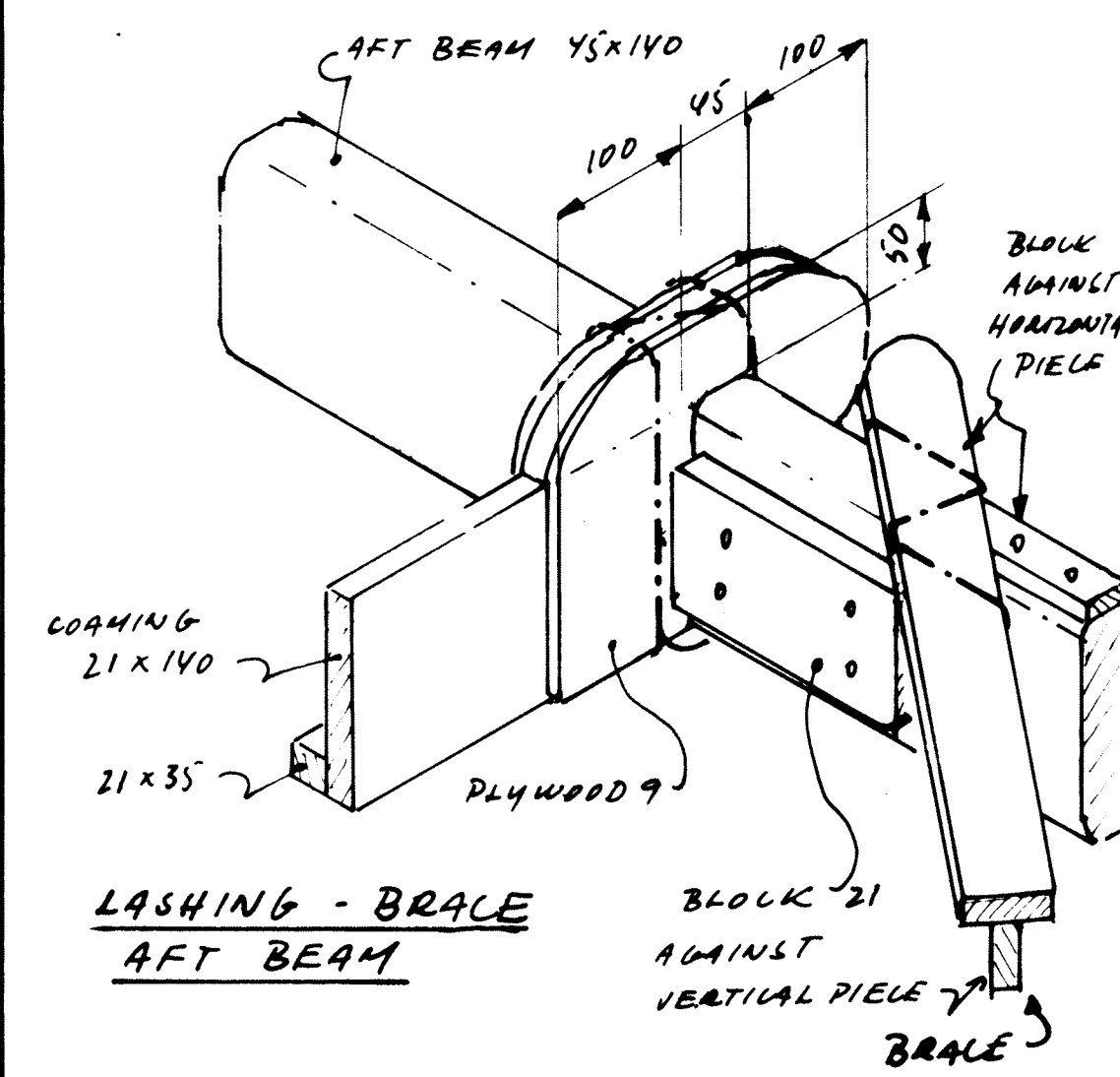
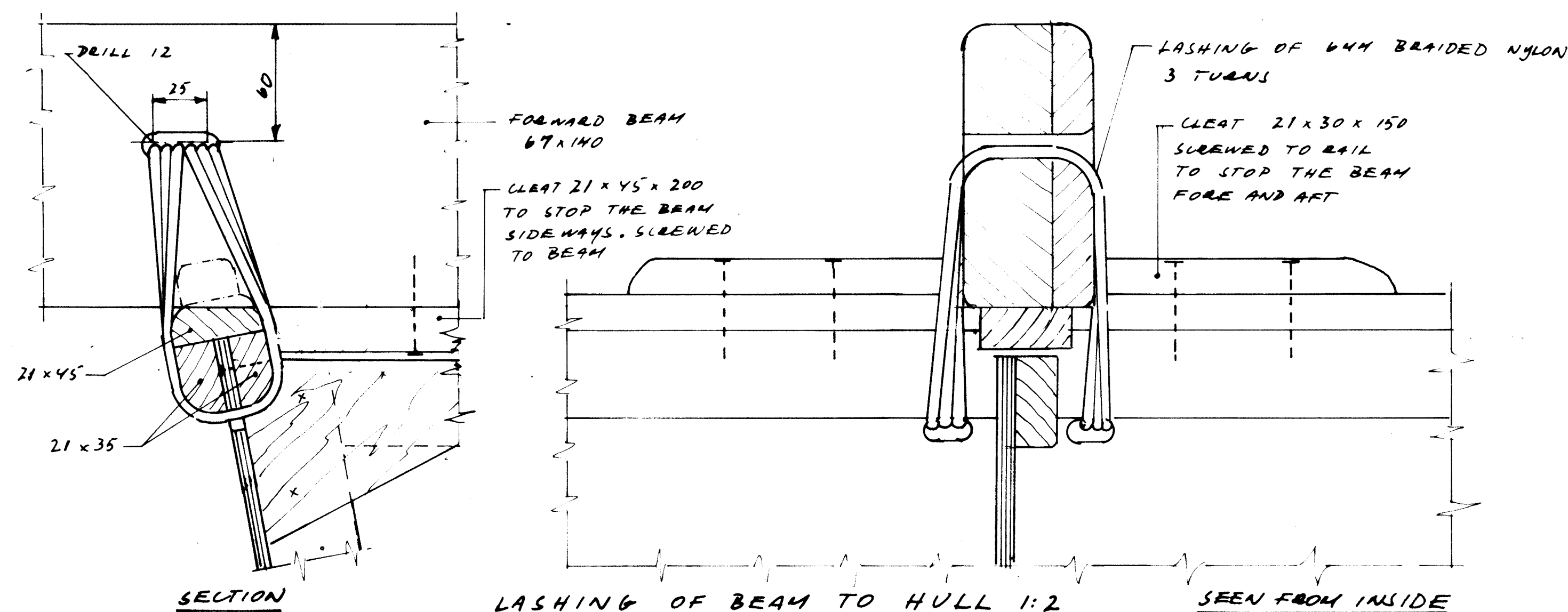


POS	ITEM	DIMENSION MM	LENGTH MM	QUANTITY	TOTAL LENGTH MM
1	FRAME SPALL	20x65	VARIOUS		10
2	LONGITUDINAL	45x90	7220	2	14.5
3	CROSS BEARER	20x65	600	7	4.2
4	CROSS BEARER	45x90	600	2	1.2
5	BRAVING	20x65	VARIOUS		15

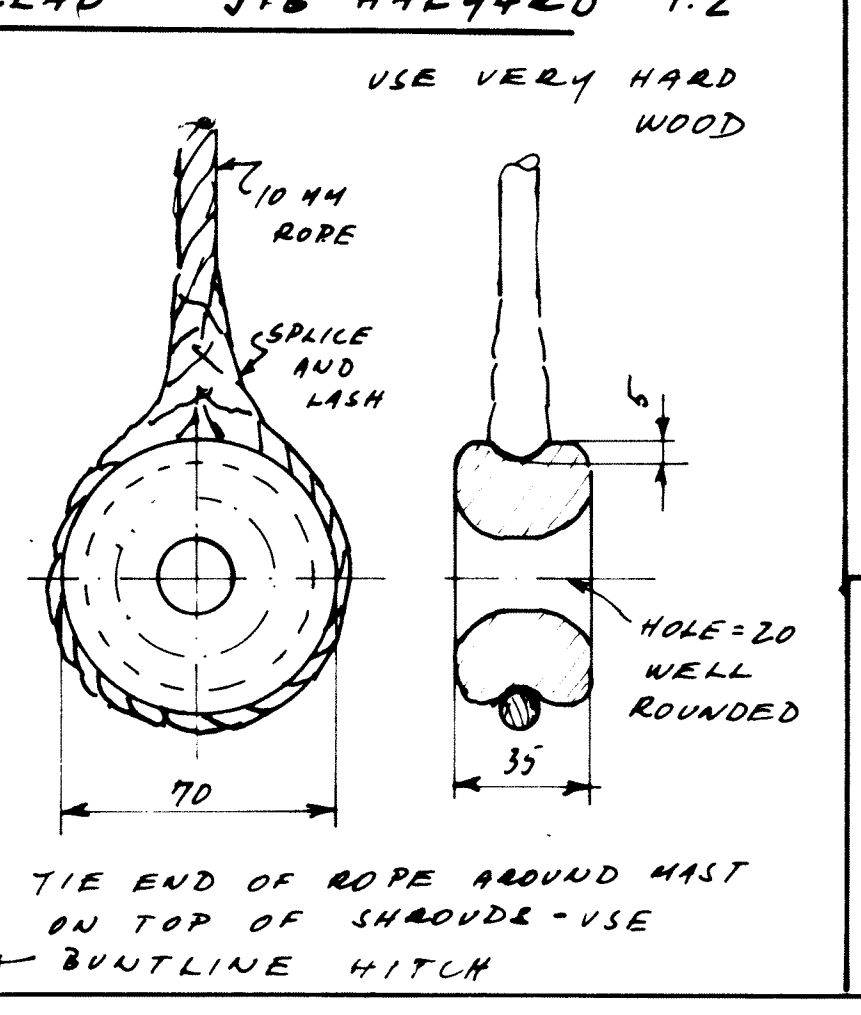
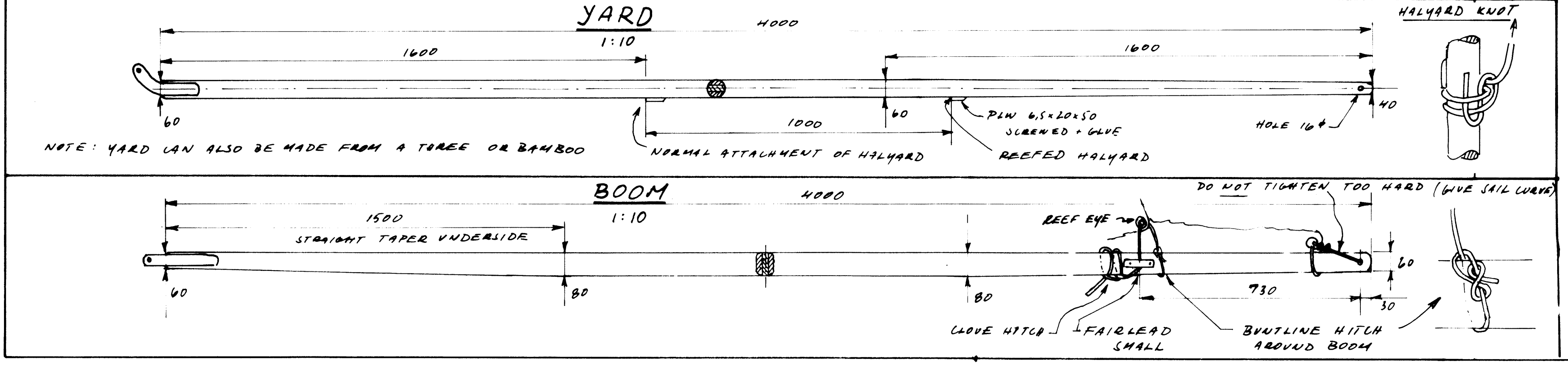
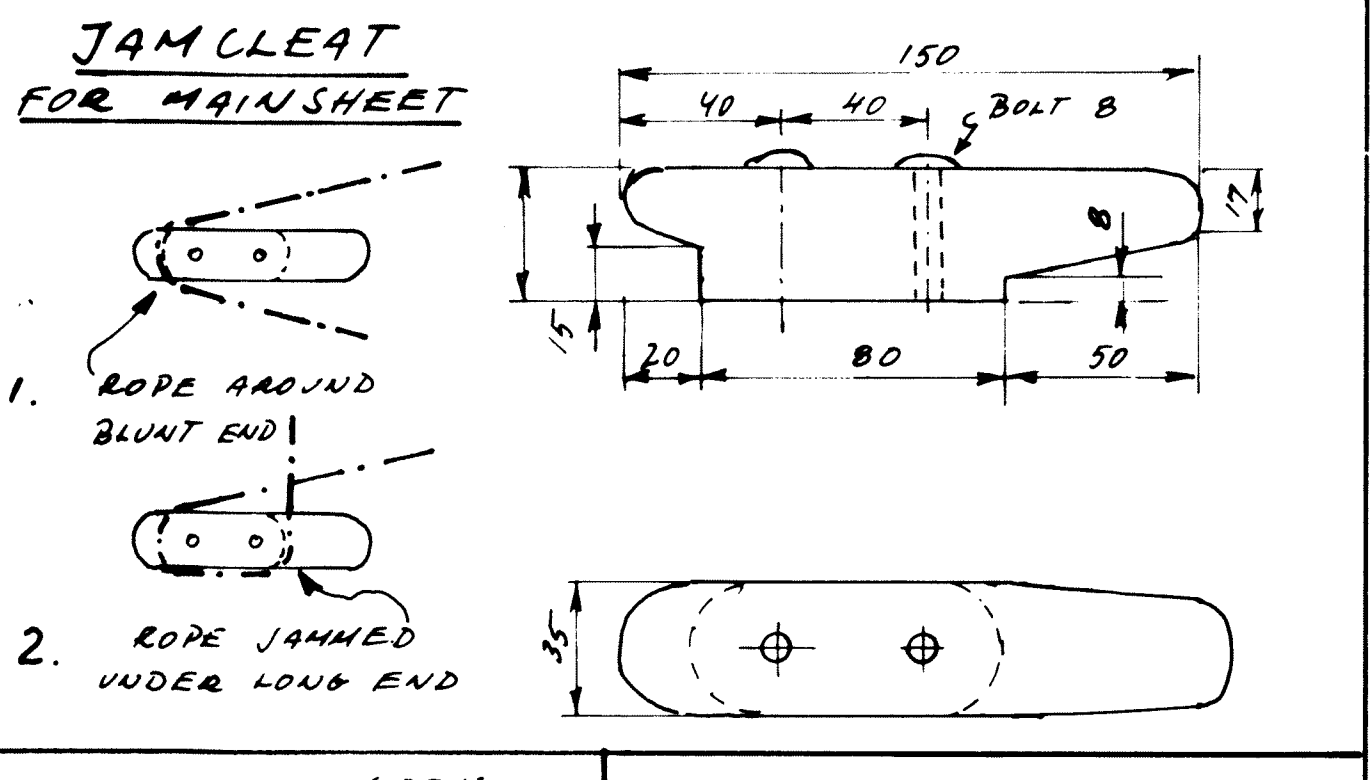
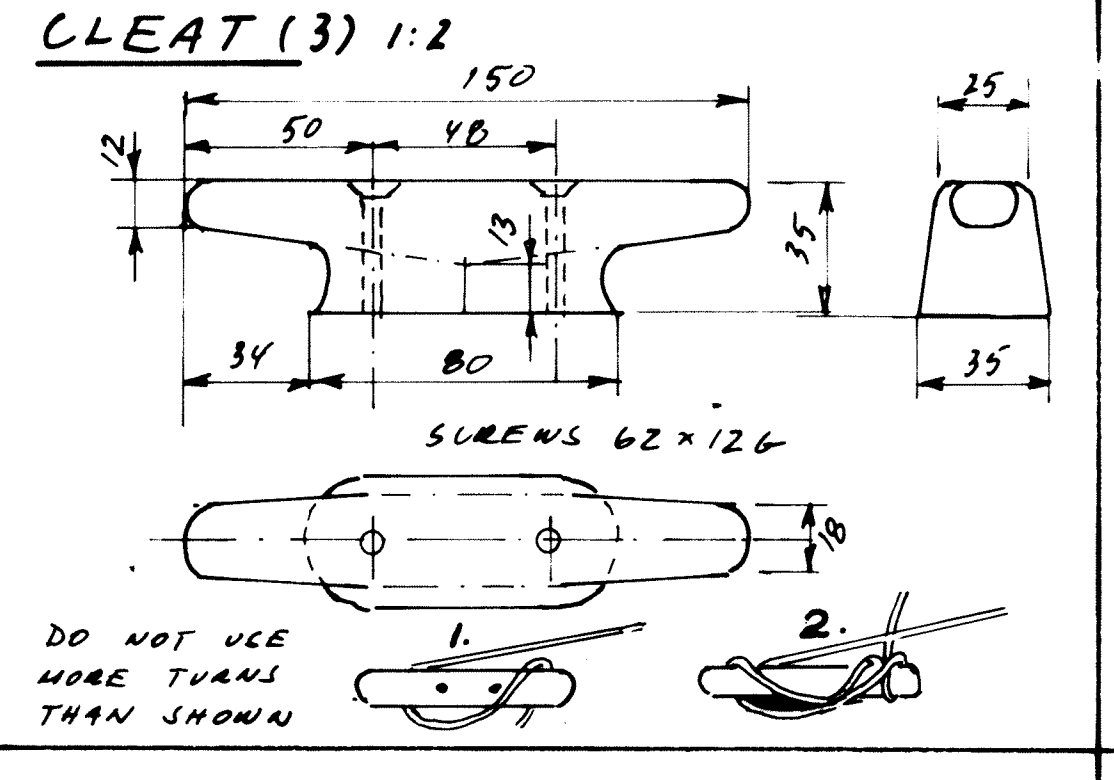
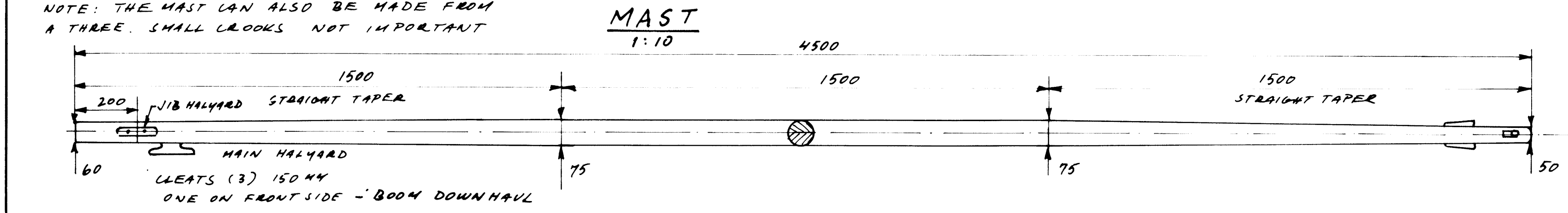
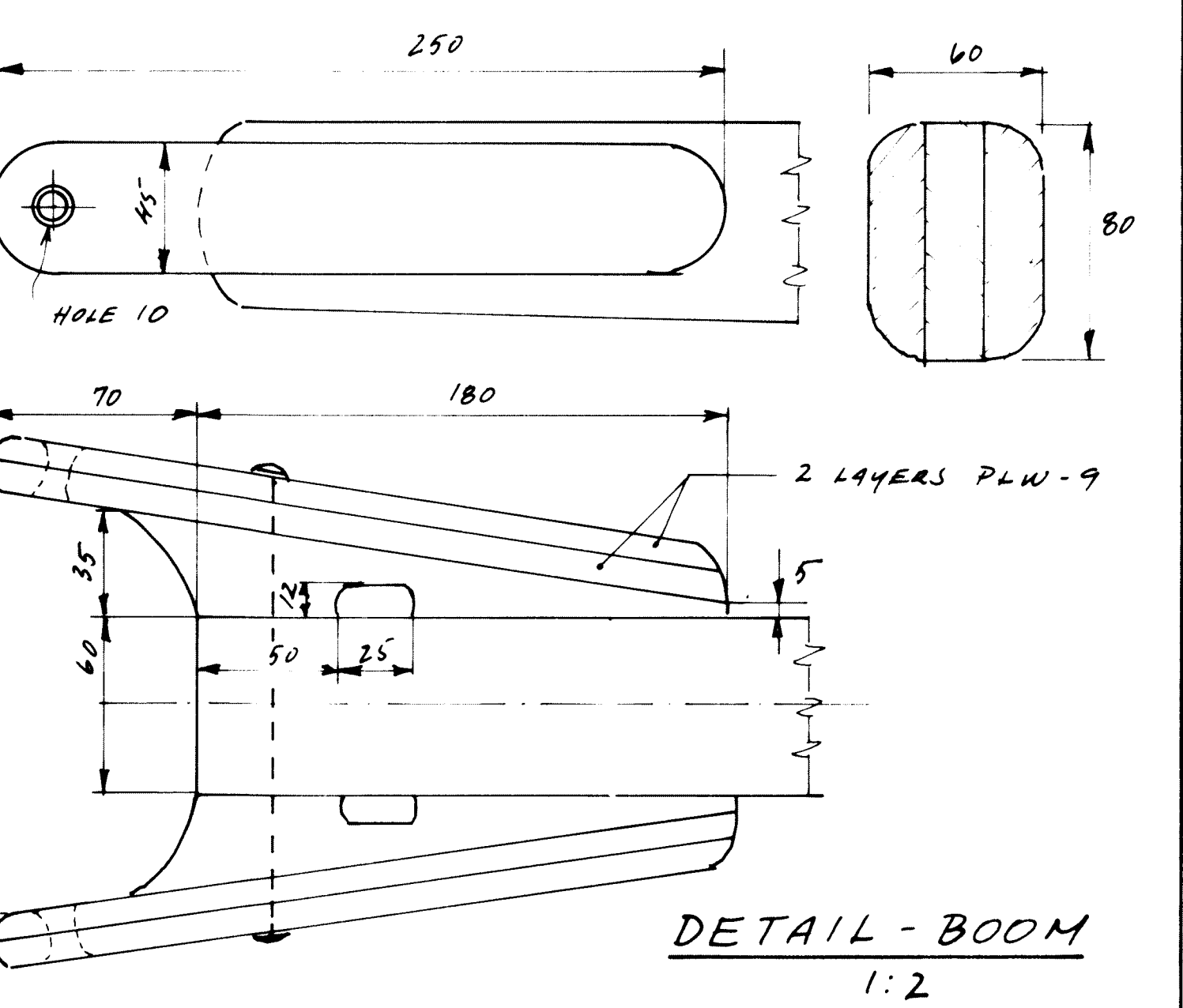
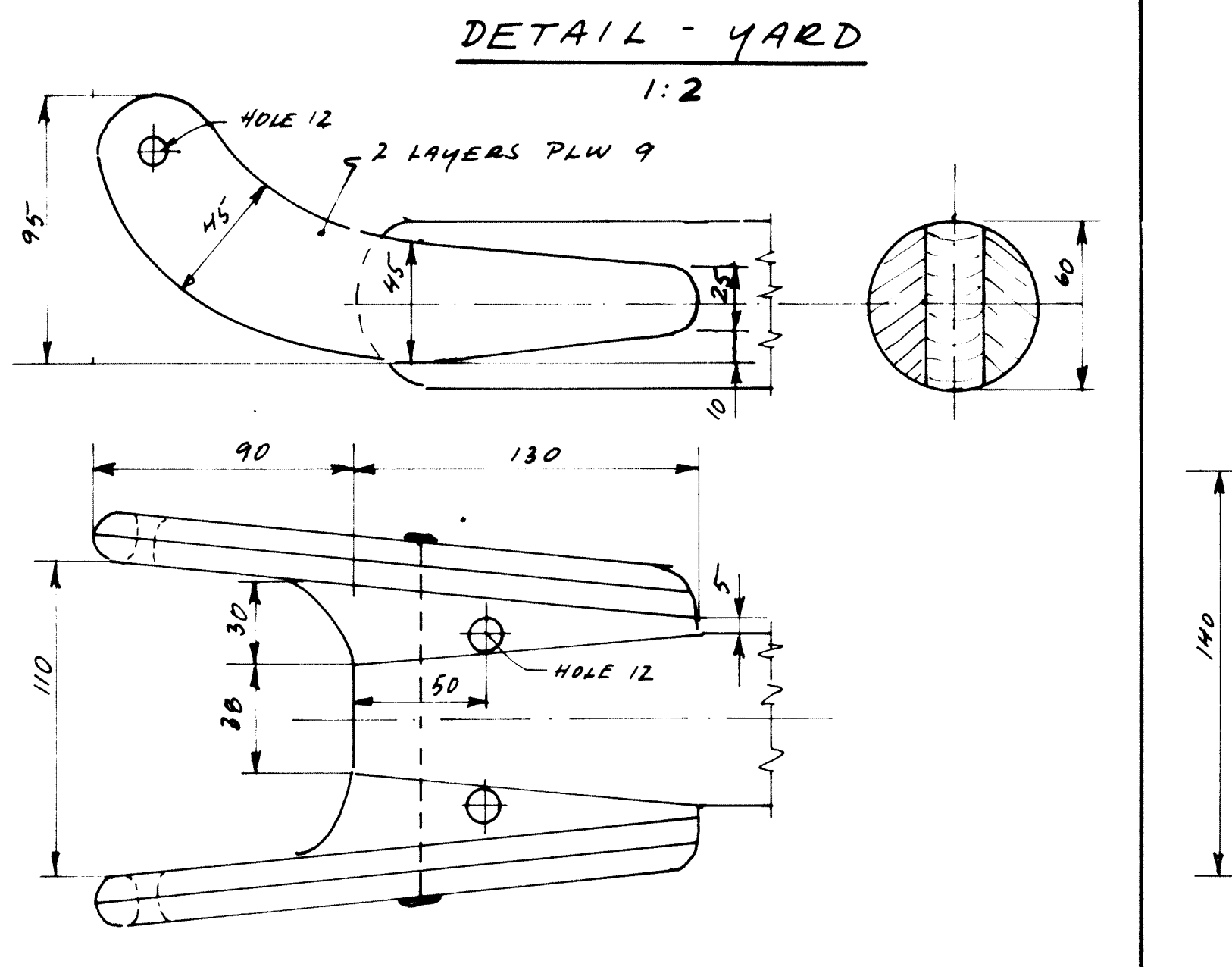
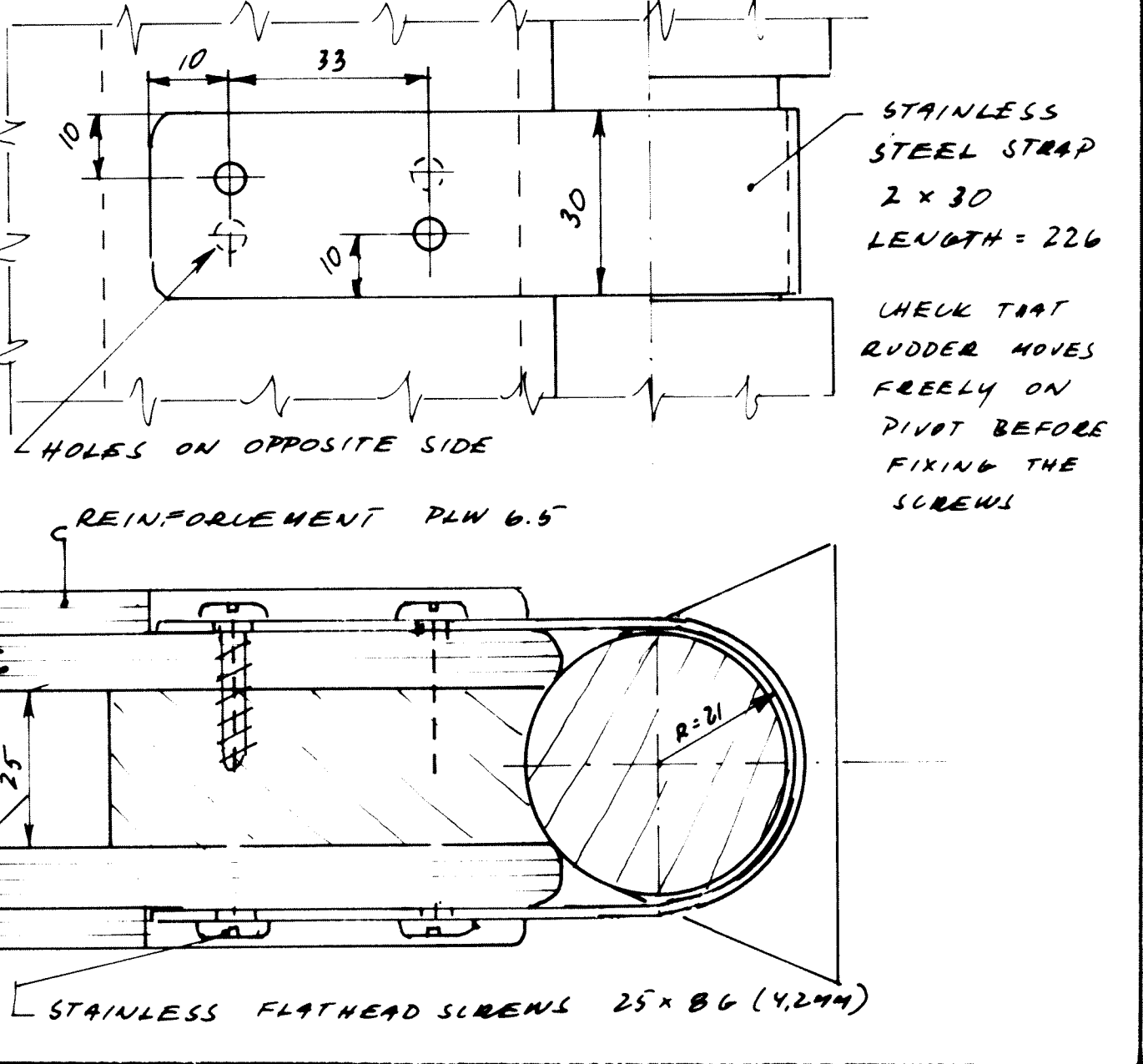
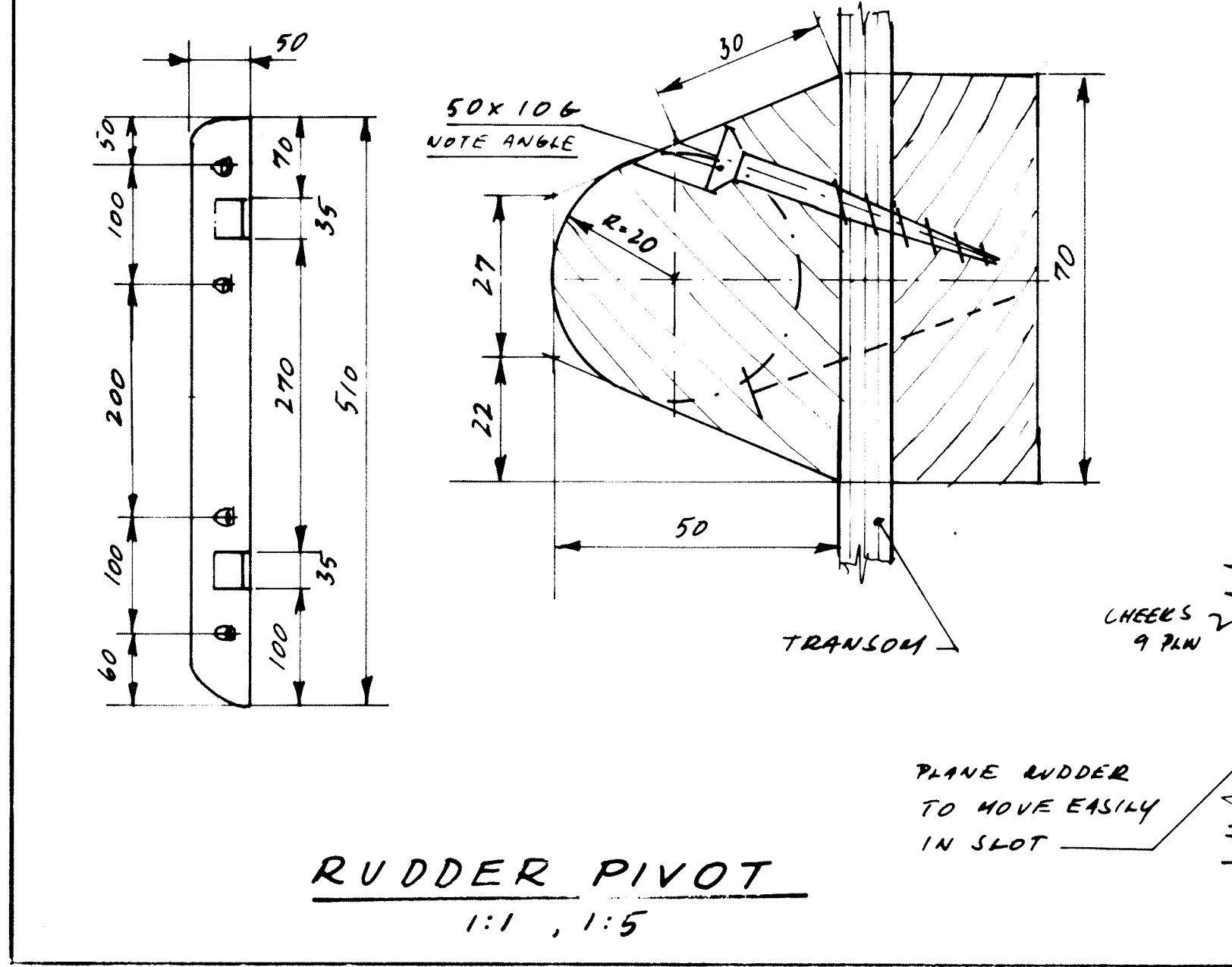
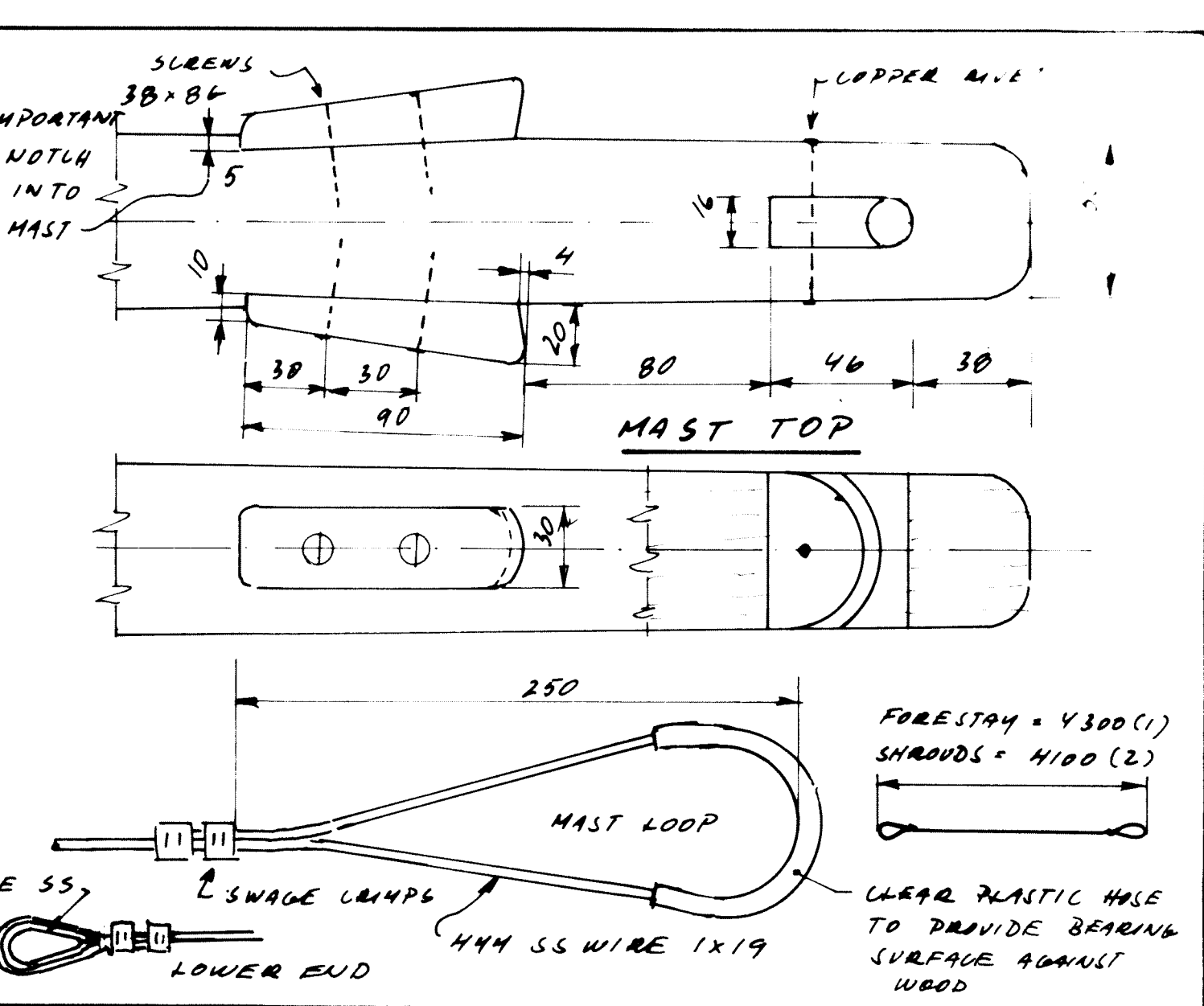
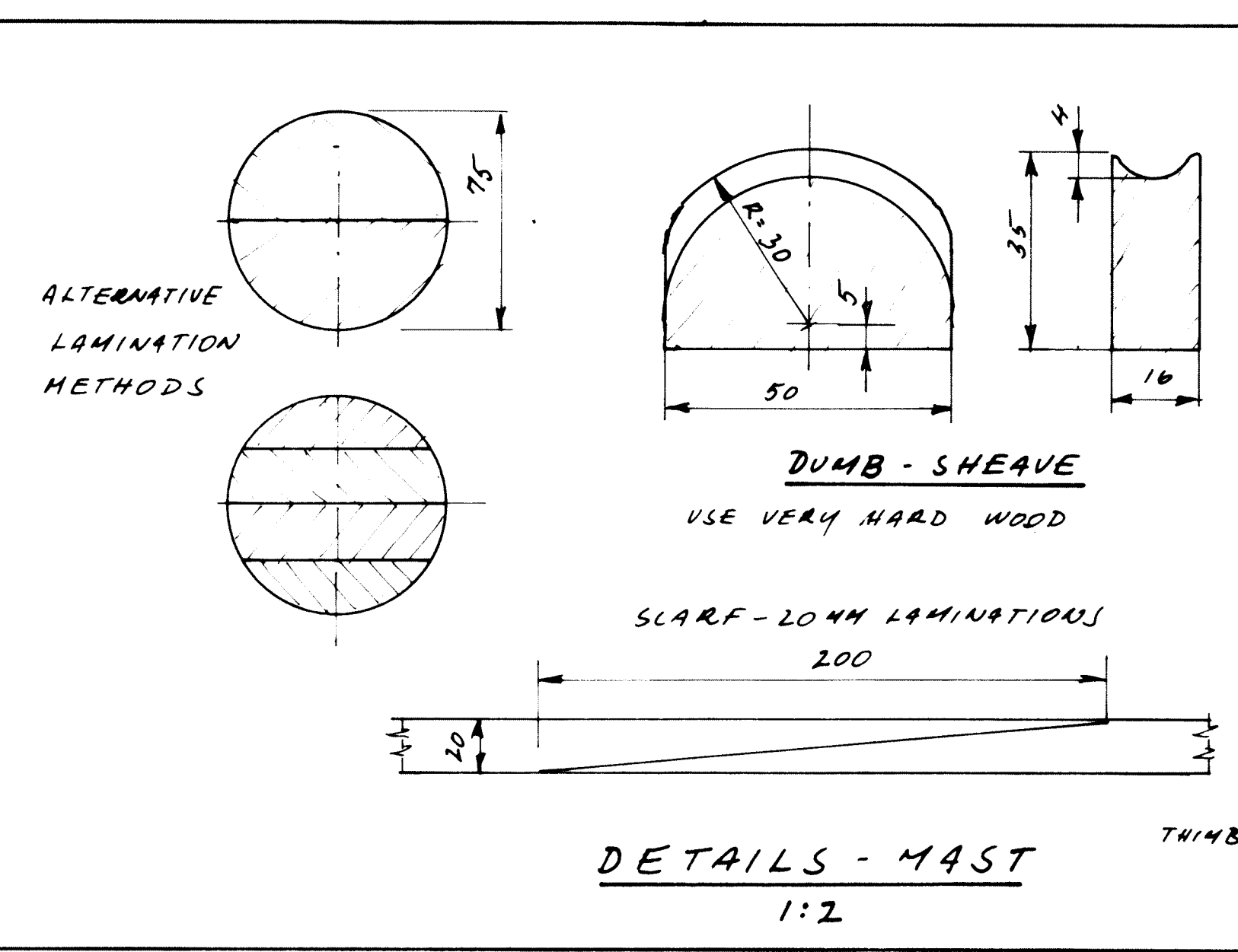
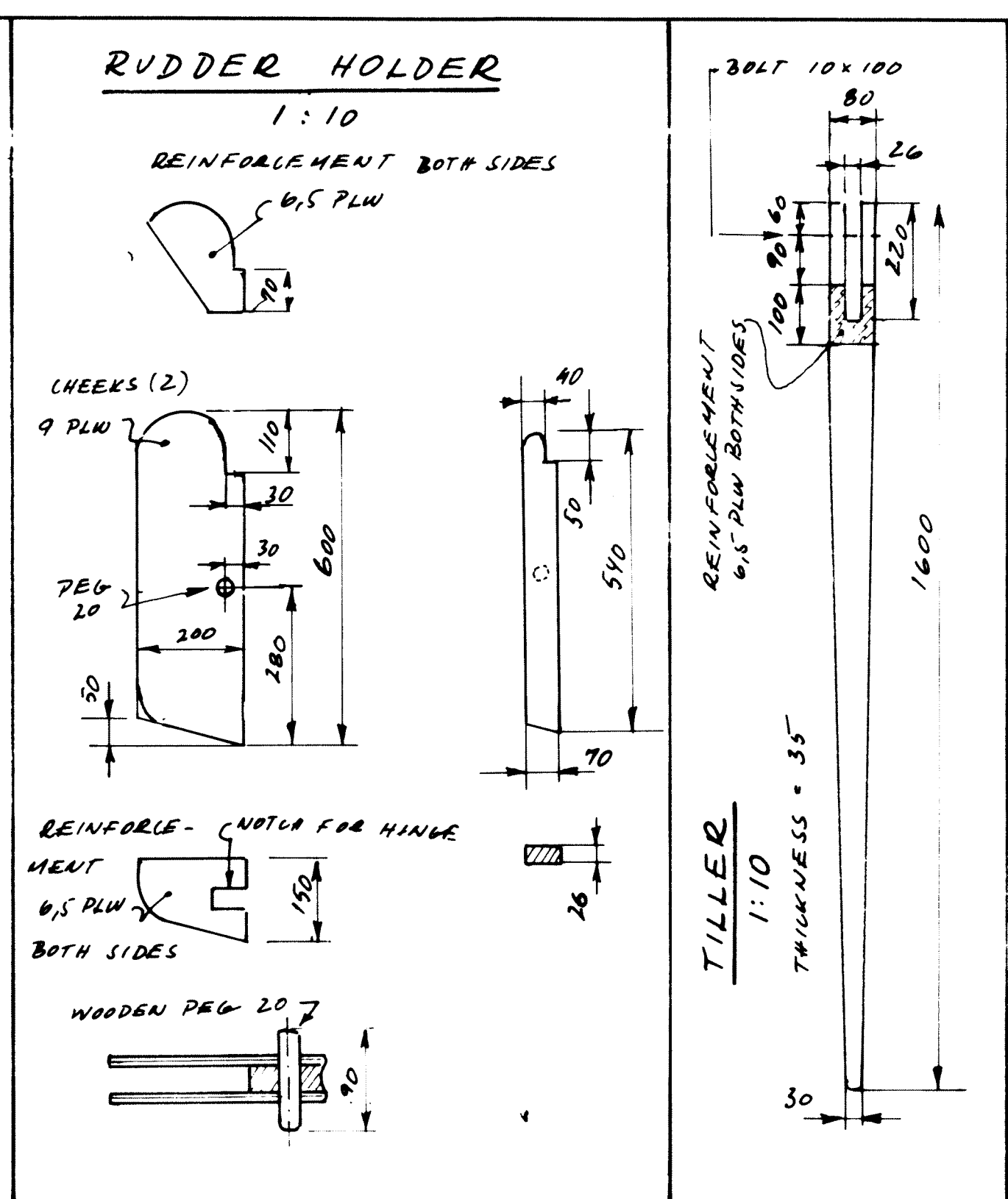
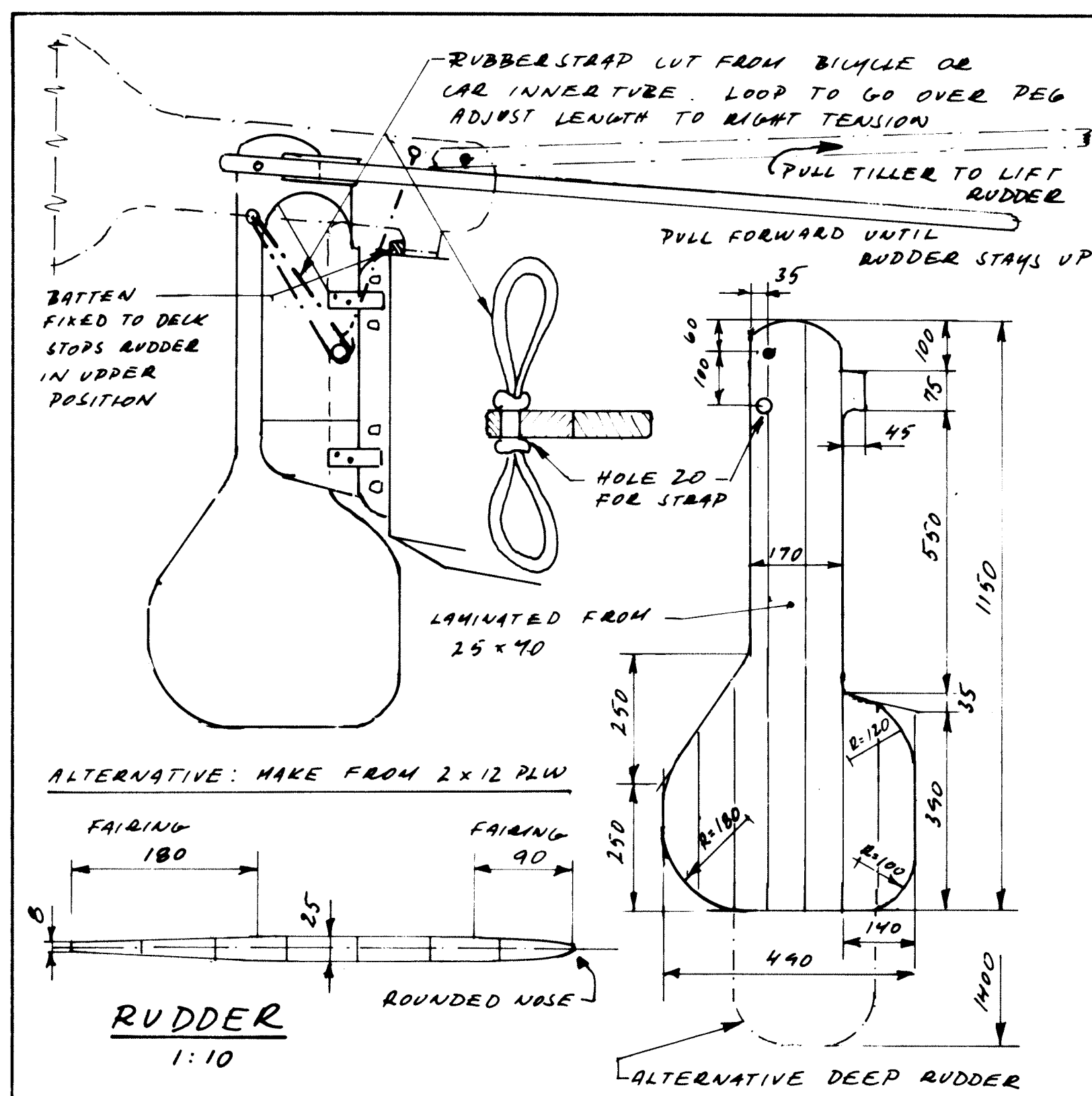
7.1M SINGLE OUTRIGGER CANOE

FRAMES

SCALE: AS SHOWN	DESIGN NO.	DRWG. NO.
DESIGN: P. LUN/BRANDEN	KIR-BA	3
GRIMSTAD, JAN-88		



	7.1 M SINGLE OUTRIGGER CANOE		
	DETAILS		
	SCALE: AS SHOWN	DESIGN NO	DRAWN NO
	DESIGN: P. C. C. C. C.	KIR-BA	5
	UNISTAD, JAN - 88		



7.1 M SINGLE OUTRIGGER CANOE

RIGGING AND RUDDER

SCALE: AS SHOWN	DESIGN NO.	DRAWING NO.
DESIGN: G. GUNNARSSON	KIR-BA	6
GRINSTAD, JAN-88		