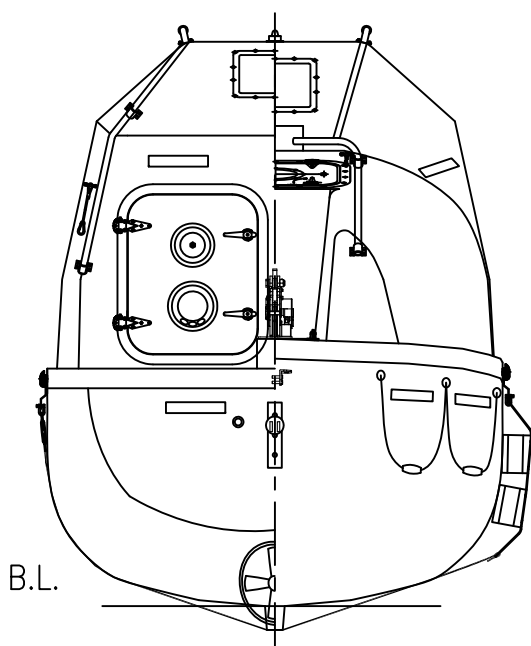
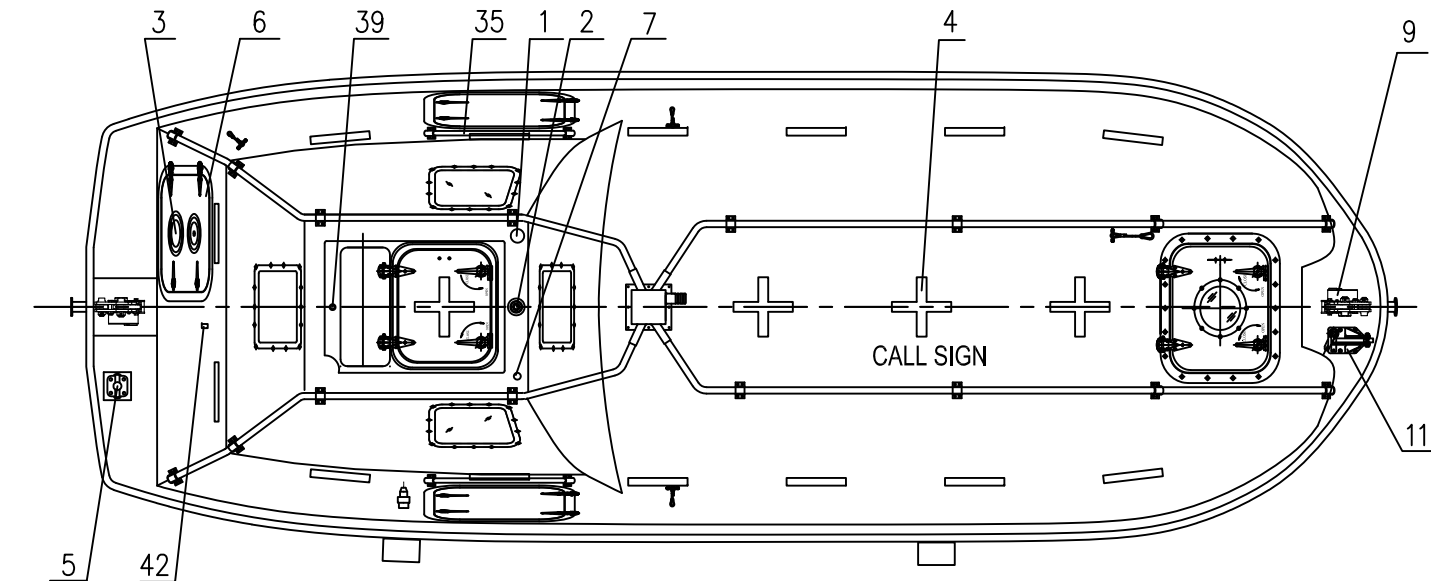


ELEVATION



REAR/FRONT VIEW



PLAN

REPLACES	REPLACED BY
THIS PART IS USED IN THE FOLOWING BOATS JYN65T	

PRINCIPAL DIMENSIONS

LENGTH (MOULDED)	6.50m
BREADTH (MOULDED)	2.30m
HEIGHT	3.10m
DEPTH MOULDED	1.20m
HOOK DIST	6.10m
CAPACITY	36 PERSONS
WEIGHT OF BOAT WITH EQUIPMENT	2930Kg
WEIGHT OF BOAT WITH PERSONS	5900Kg (82,5kg/pers)
SPEED	>6Kn
ENGINE	380J-3

44	BRACKET FOR RELEASE UNIT	1	ALSI 316L
43	PLUG FOR BATTERY CHARGING	1	IP67
42	VENT FOR BATTERIES	1	SS 316 & PVC HOSE
41	HYDROSTATIC UNIT	1	
40	RELEASE MECHANISM	1	ALSI 316
39	RAIN COLLECTION	1	BRASS
38	SPRINKLE OUTLET/ PIPING	1 LOT	SEA WATER RESISTANT ALUM.
37	EMERGENCY STEERING HANDLE	1	HOT DIPPED GALVANIZED STEEL
36	SKATE	2	RUBBER & ALUM.
35	RAIL	2	STAINLESS STEEL
34	FOOD COMPARTMENT	1	F.R.P.
33	OAR/CRUTCH	2	WOOD
32	WATER COMPARTMENT	3	F.R.P.WATER-RESISTANT
31	STEERING GEAR	1	
30	ENGINE & PROPELLER SHAFT	1	
29	STEERING NOZZLE & PROPELLER	1	F.R.P./NiMn-Bronze Cu3-Cu4
28	BATTERIES	2	70AH
27	AXE	2	
26	PILLAR	1	
25	SPRINKLE PUMP	1	
24	DRAIN PLUG	1	BRASS
23	MANUAL PUMP	1	
22	FIRE EXTINGUISHER	1	
21	FUEL TANK	1	SEA WATER RESISTANT ALUM.
20	AIR CYLINDER	3	
19	SAFETY BELT	1/PERS	
18	EQUIPMENT COMPARTMENT	2	
17	DOOR LATCH AND HINGE	1 LOT	SS316 & PVC SHIELD WIRE ROPE
16	BACK REST	1	PLYWOOD
15	CONTROL PANEL	1	
14	SEARCH LIGHT	1	
13	INT. LIGHT	2	
12	HELMSMANS CHAIR	1	F.R.P.
11	PAINTER HOOK	1	HOT DIPPED GALVANIZED STEEL
10	Backing plate with bobbin	2	SS2377
9	HOOKS DEVICE ARRANGEMENT	2	TOR-MK2-S 3.36T
8	LIFE LINE	2	
7	REMOTE CONTROL LINE HOLE	1	
6	DOOR	1 LOT	
5	BOLLARD	1	SS 316
4	REFLECT LIGHT STRIP	1 LOT	
3	VENTILATOR	2	
2	POSITION LIGHT	1	
1	RADAR REFLECTOR	1	

NO.	REF.DWG.NO.	DESCRIPTION	QTY.	REMARKS
1		Updated aft door		SATA VXI THWA 27.11.2015
0		Issued for construction		VX THWA TMA 05.05.2015
ISSUE No.		REASON FOR ISSUE	Drawn	Check Appr'd Date



Norsafe as  
Lifeboatbuilder since 1903  
P.O. Box 115, N-4852 FÆRVIK, NORWAY

Drawing size A3 SCALE 1: 40		TITLE	
Project	STANDARD	PROJECTION METHOD:	JYN65 TELB
DWG file	G-500791-1	DRAWING No.	GENERAL ARRANGEMENT
			EXTERNAL, TOR-MK2-S 3,36T
			TANKER VERSION

Due to manufacturing reasons  
dimensions may vary up to 50mm