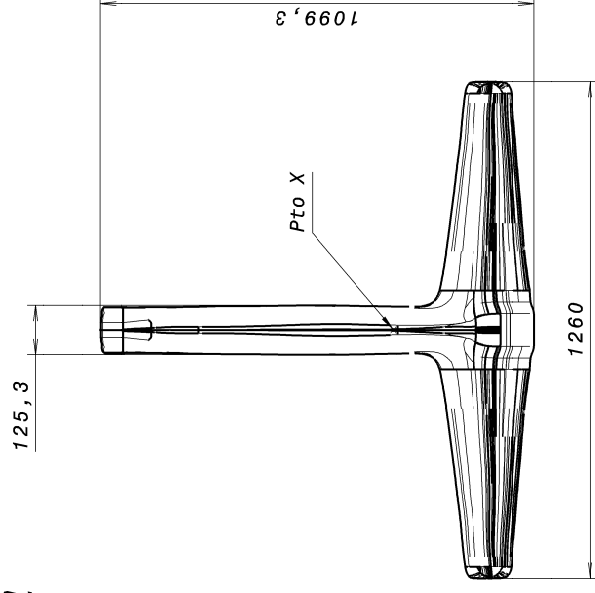
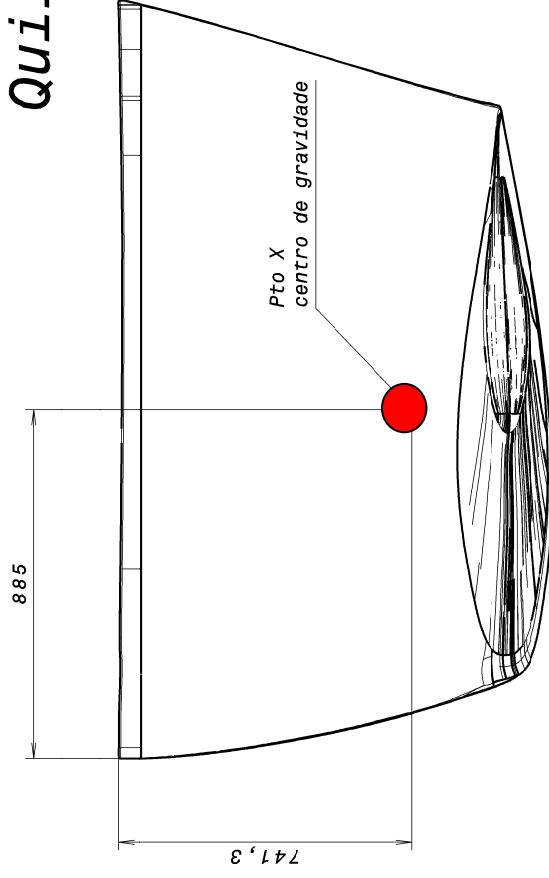
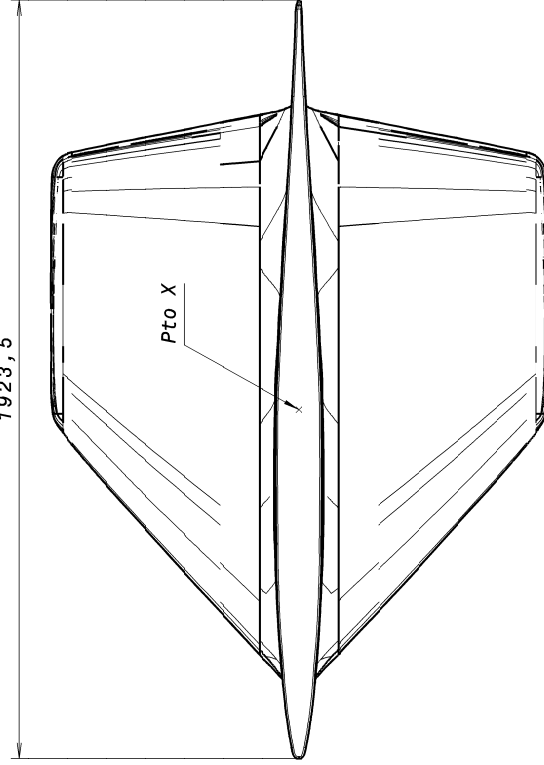


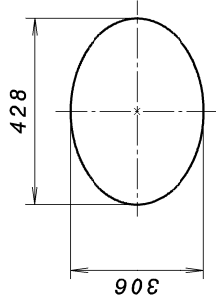
## Quilha



Area= 6,077m<sup>2</sup>  
Volume= 0,3003m<sup>3</sup>  
Massa= 2,357T

Escala 1:10





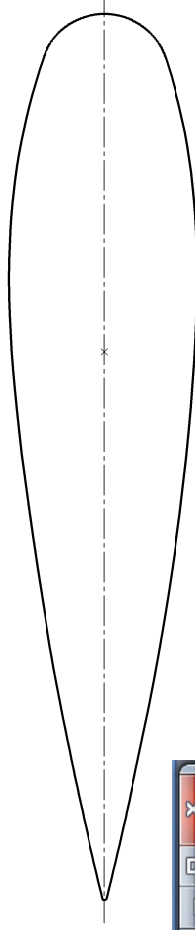
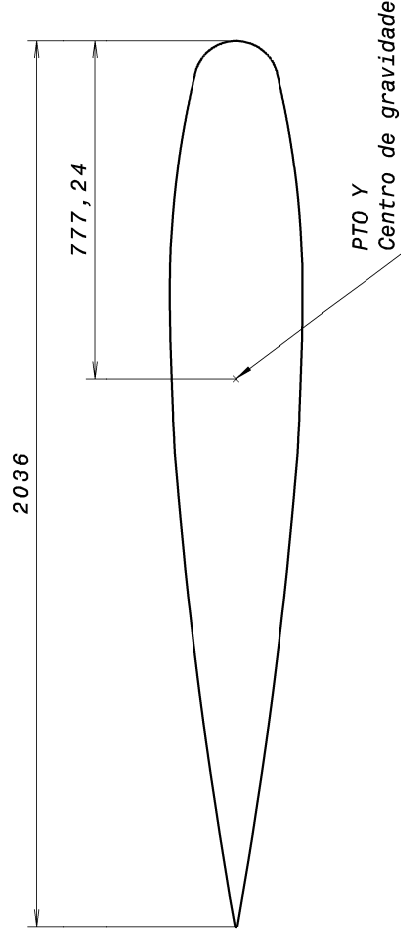
Area = 1,664 m<sup>2</sup>

Volume= 0,1167 m<sup>3</sup>

{Aço: 916,136 Kg

Massa: { Chumbo: 1319,877 Kg

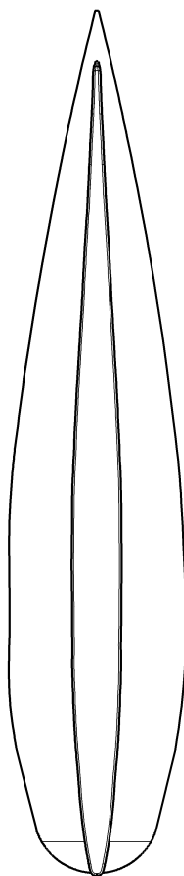
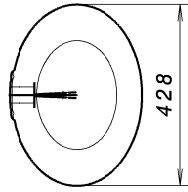
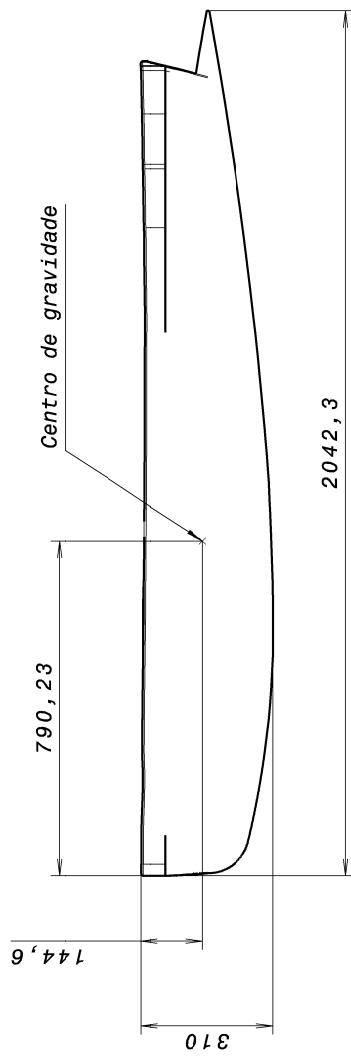
{ Chumbo fundido: 1326,879 Kg



Bulbo - Bloco de notas

Arquivo	Editar	Formatar	Exibir	Ajuda	
Foil Type: 00XX					
Height/Length Ratio:		15,00%			
Width/Height Ratio:		140,00%			
Length (cm):		20,36			
Centre (cm):		7,47			
Projected weight (kg):		1,2999			
Volume (cm3):		115,0365			
Wetted Surface (cm2):		162,8383			
Position	X	Height	Max	Height Min	Width
1	0,00	0,00		0,00	0,00
2	2,91	1,34		-1,34	1,88
3	5,82	1,53		-1,53	2,14
4	8,73	1,45		-1,45	2,03
5	11,64	1,22		-1,22	1,71
6	14,54	0,90		-0,90	1,26
7	17,45	0,50		-0,50	0,70
8	20,36	0,03		-0,03	0,04

Levando o bulbo no topo



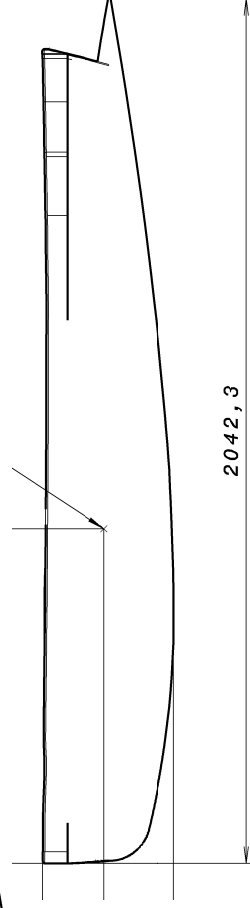
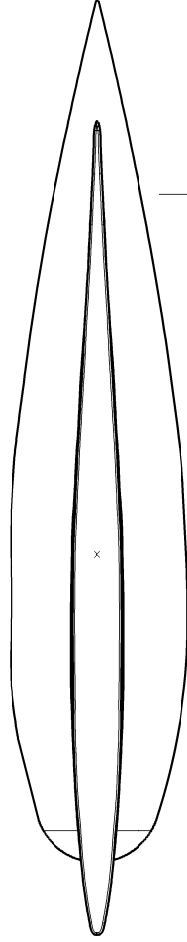
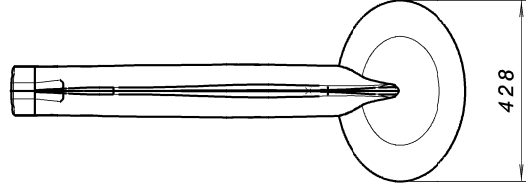
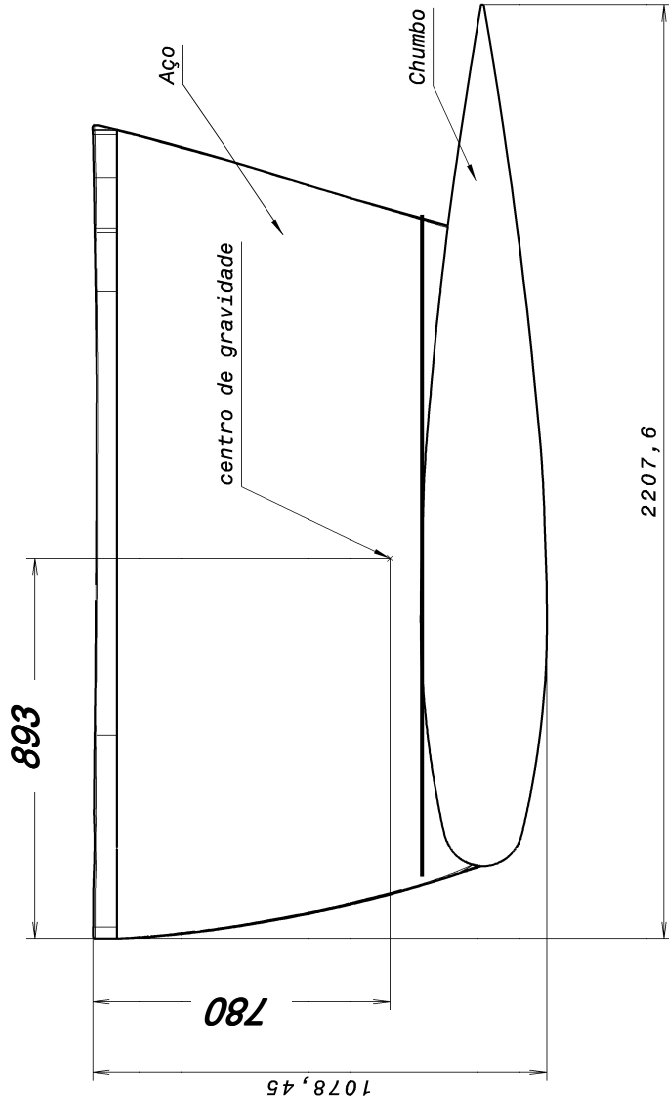
Totalmente de chumbo

Area = 2,547 m<sup>2</sup>

Volume= 0,14 m<sup>3</sup>

Massa= 1,582 ton

*Está mais próximo do peso Original  
Podemos melhorar se necessário*



**Versão Bulo Pb 2**  
**Área = 5,90 m<sup>2</sup>**  
**Peso = 2,58T**