

Appendix B. Characteristics of fishing vessel

The hull form and main characteristics of the ship employed in the present investigation—here denominated TS—are give in Fig. B1 and Table B1, respectively.

The ship was tested with two different metacentric heights, $GM = 0.37$ m and $GM = 0.50$ m. The respective roll-roll restoring curves in calm water (GZ curves) are given in Fig. B2.

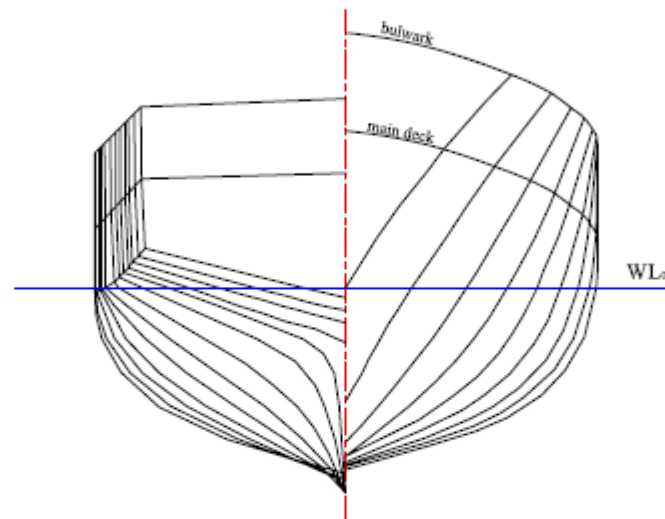


Fig. B1. Hull form of transom stern fishing vessel.

Table B1
Ship main characteristics

Denomination	Transom stern (TS)
Overall length [m]	25.91
Length between perpendiculars [m]	22.09
Breadth [m]	6.86
Depth [m]	3.35
Draft [m]	2.48
Displacement [ton]	170.3
Longitudinal radius of gyration [m]	5.52