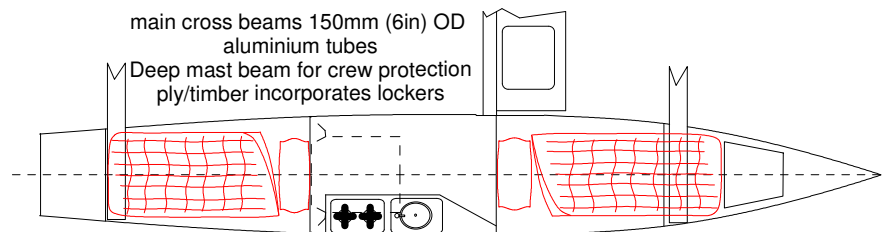
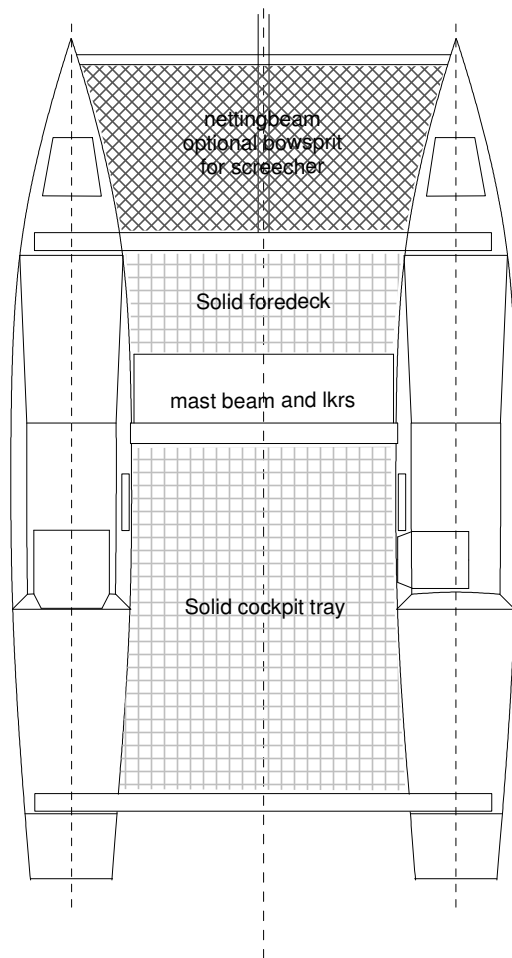


Hard chine hull for easy building  
and maximum interior space  
Veed forward to prevent slamming



main cross beams 150mm (6in) OD  
aluminium tubes  
Deep mast beam for crew protection  
ply/timber incorporates lockers



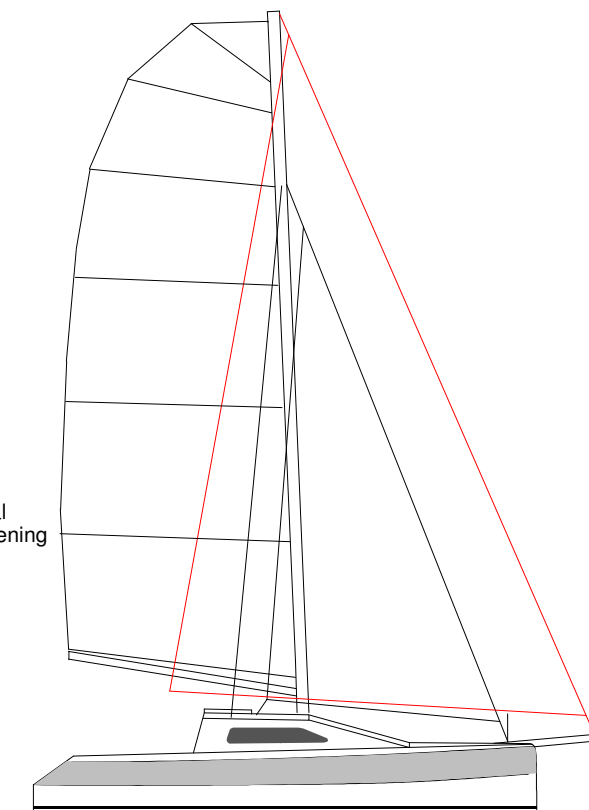
netting beam  
optional bowsprit  
for screecher

Solid foredeck

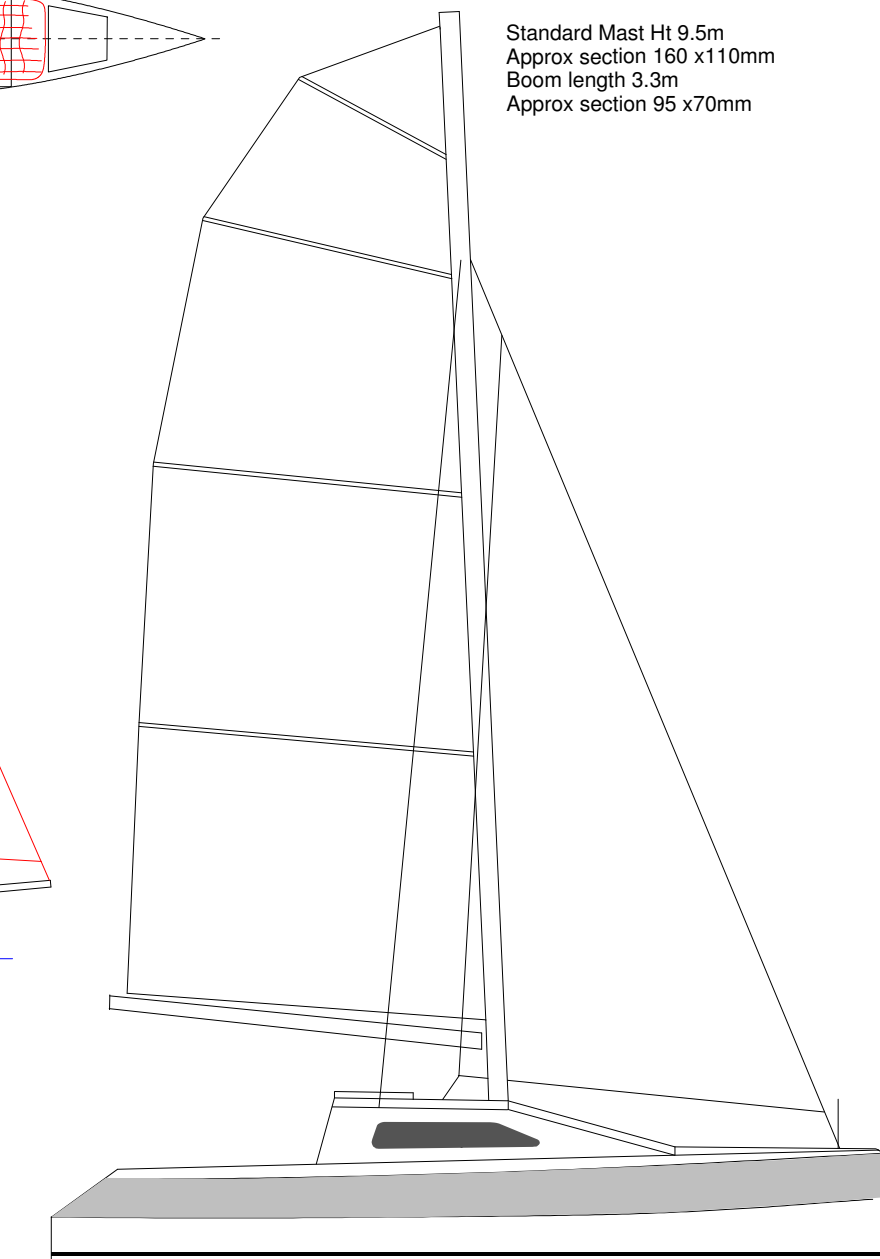
mast beam and lhrs

Solid cockpit tray

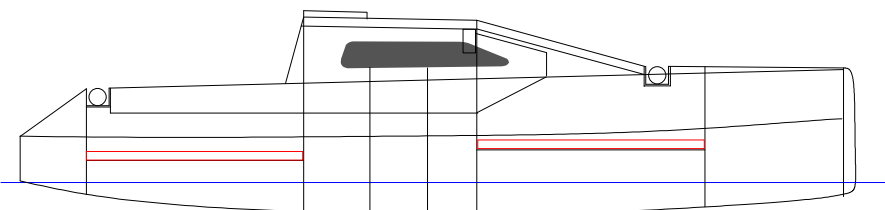
Optional  
side opening  
hatch



Racing rig Sail Area  
Mainsail 26sqm  
Jib 11sqm (screecher in red 28sqm)



Standard Mast Ht 9.5m  
Approx section 160 x110mm  
Boom length 3.3m  
Approx section 95 x70mm



porta potti port side  
slides under aft bunk

LOA 7.3m  
BOA 4.4m  
Sail Area:  
Mainsail 21.5sqm Jib 10sqm  
Empty weight 650kgs  
Displacement to WL 1250kgs  
Draft 250mm, (1200 boards down)  
2 single berths in each hull:  
fwd 900 wide, aft 800 wide  
Headroom 1.7m

**easy build sheet ply**  
**trailable cruising catamaran**  
**telescopic trailer for singlehanded assembly**  
**optional racing rig**  
**optional central cuddy**

**Eagle 24**  
Study Plan  
Copyright WOODS DESIGNS  
October 2015