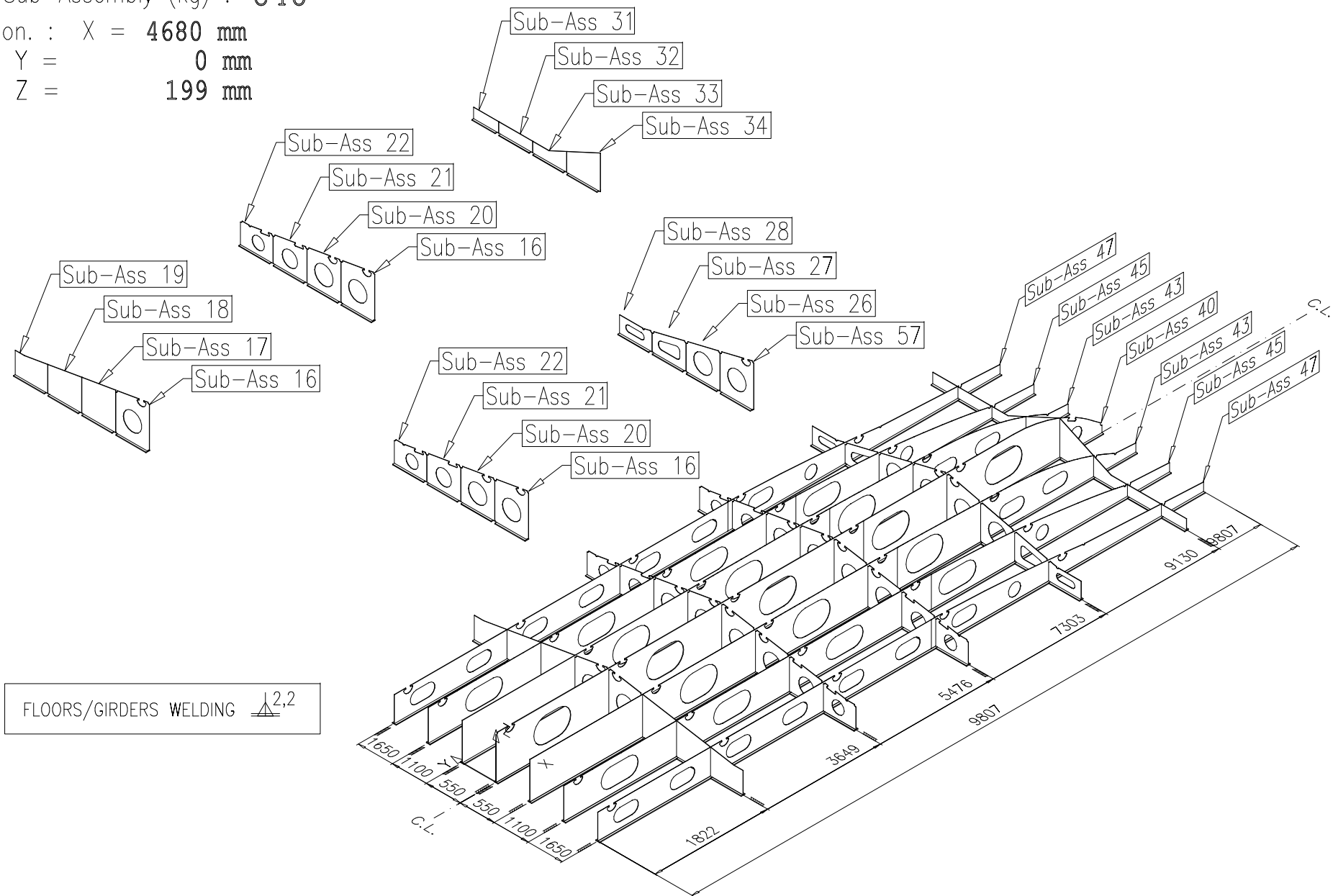


Weight of the Sub-Assembly (kg) : **640**

C. of G. Position. : X = **4680 mm**
Y = **0 mm**
Z = **199 mm**



TAN s.l.

Date :
18/10/2012

PROJECT
LC40'

Panel002.- Bottom Structure

EQUAL ASSEMBLIES 1
SIMMETRICAL ASS. : 0

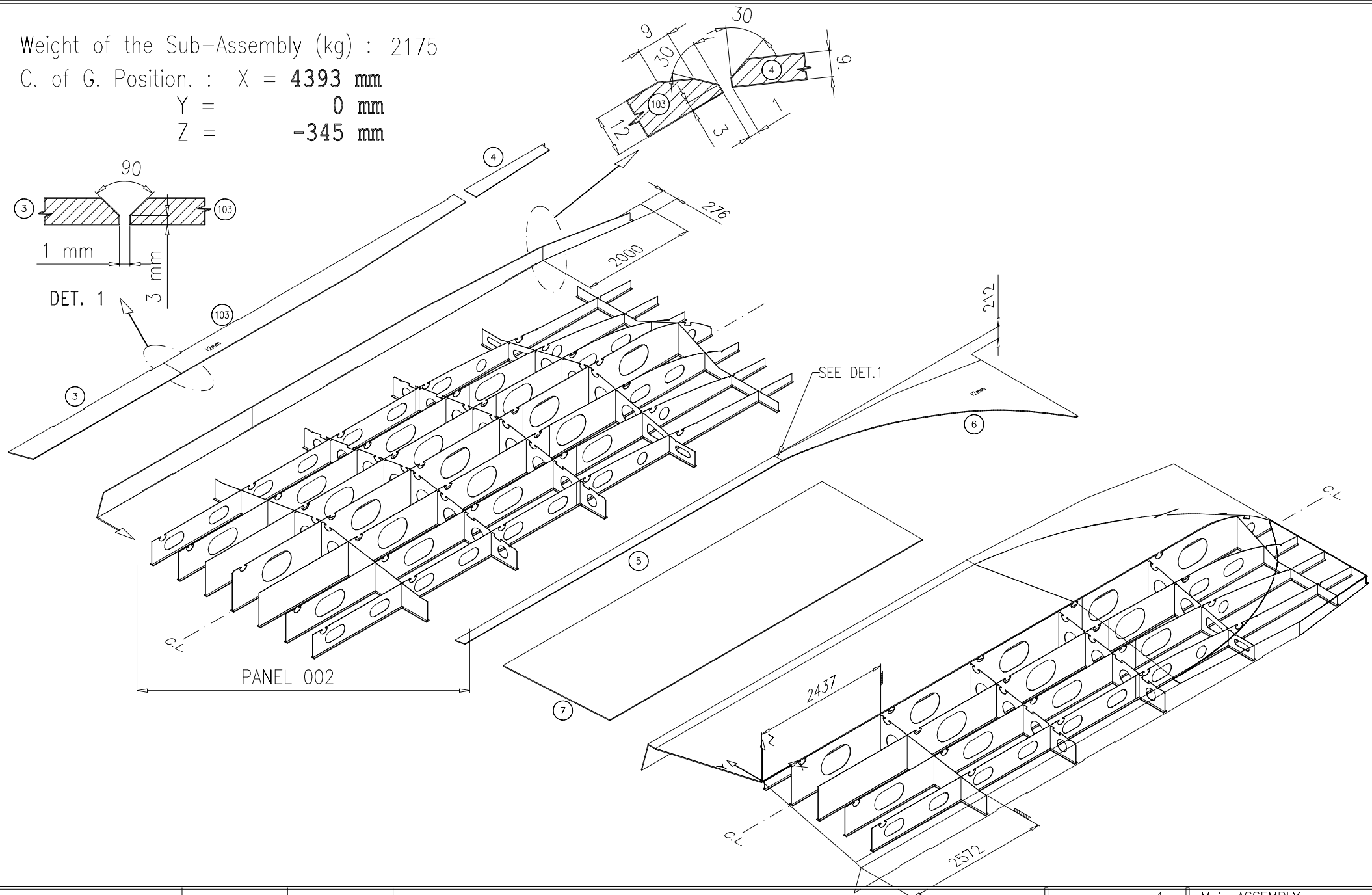
Main ASSEMBLY :
001

Weight of the Sub-Assembly (kg) : 2175

C. of G. Position. : X = **4393 mm**

Y = **0 mm**

Z = **-345 mm**



TAN s.l.

Date : 18/10/2012
PROJECT LC40'

Panel003. - D.Bottom+Shell

EQUAL ASSEMBLIES 1
SIMMETRICAL ASS. : 0

Main ASSEMBLY :
001

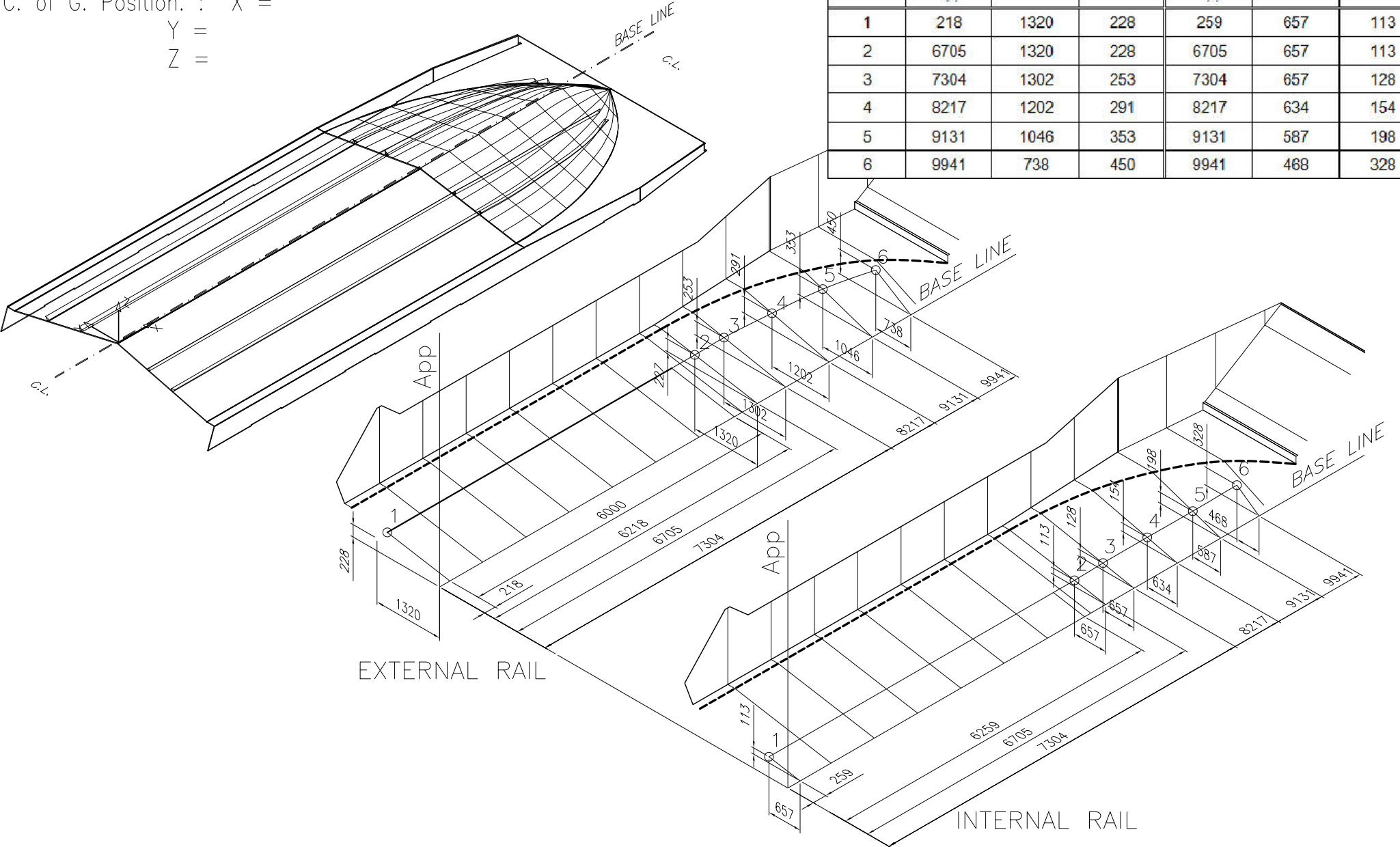
Weight of the Sub-Assembly (kg) :

C. of G. Position. : X =

Y =

Z =

Point No	External Rail			Internal rail		
	Distances (mm)			Distances (mm)		
	App	Center L.	Base L.	App	Center L.	Base L.
1	218	1320	228	259	657	113
2	6705	1320	228	6705	657	113
3	7304	1302	253	7304	657	128
4	8217	1202	291	8217	634	154
5	9131	1046	353	9131	587	198
6	9941	738	450	9941	468	328



TAN s.l.

Date :
18/10/2012

PROJECT
12LC40'

Panel003-1- SPAY RAILS ON BOTTOM

EQUAL ASSEMBLIES : 1
SIMMETRICAL ASS. : 0

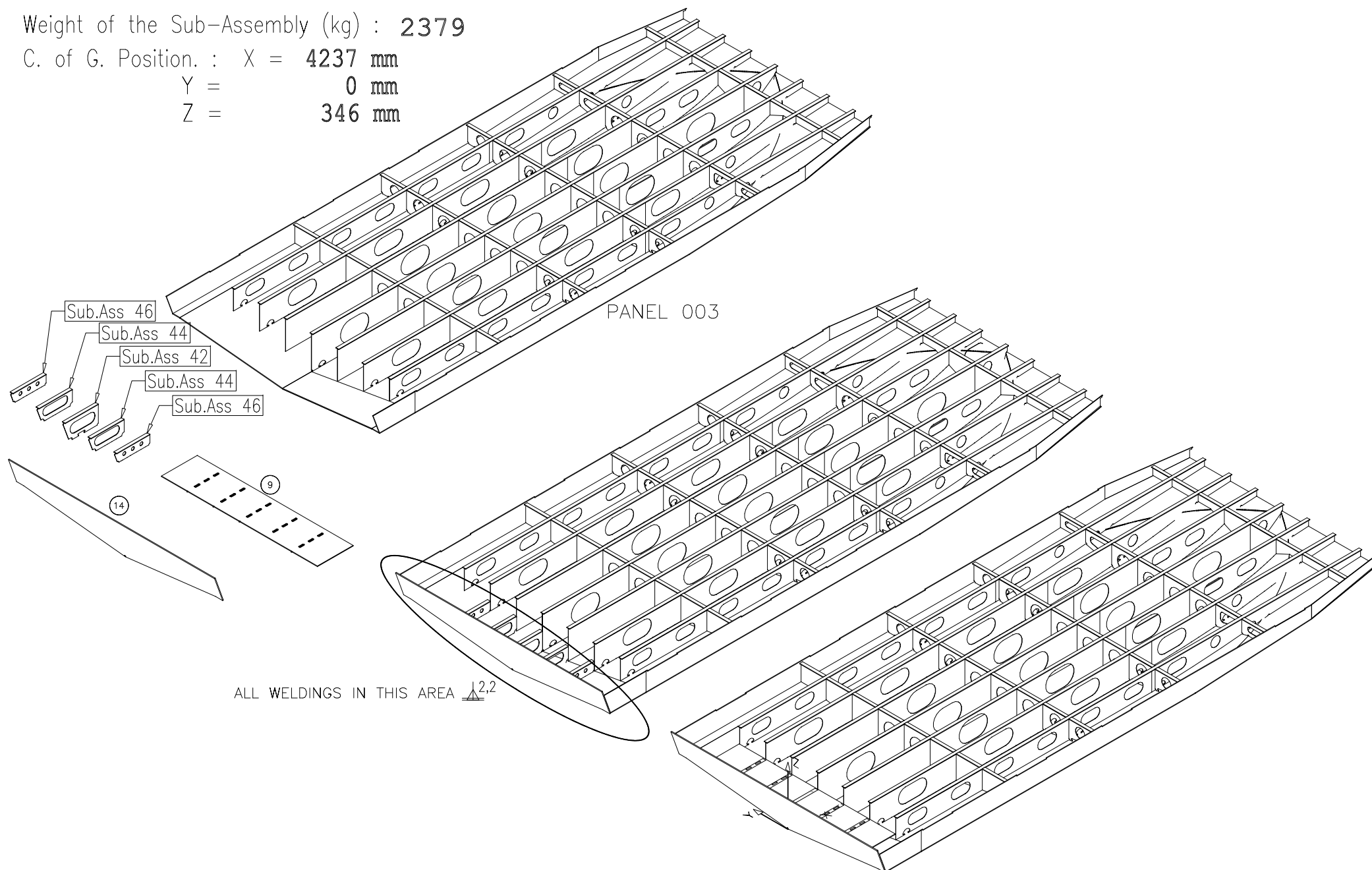
Main ASSEMBLY :
001

Weight of the Sub-Assembly (kg) : **2379**

C. of G. Position. : X = **4237 mm**

Y = **0 mm**

Z = **346 mm**



TAN s.l.

Date :
18/10/2012

PROJECT
LC40'

Panel004. – Botton

EQUAL ASSEMBLIES 1
SIMMETRICAL ASS. : 0

Main ASSEMBLY :
001

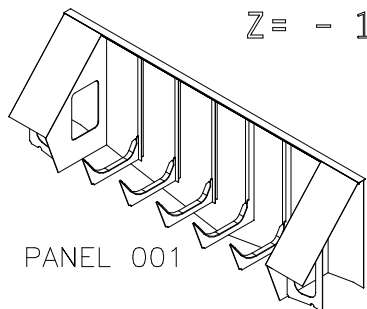
Weight of the Sub-Assembly (kg) : 2581

C. of G. Position. : X = 6632 mm

Y = 0 mm

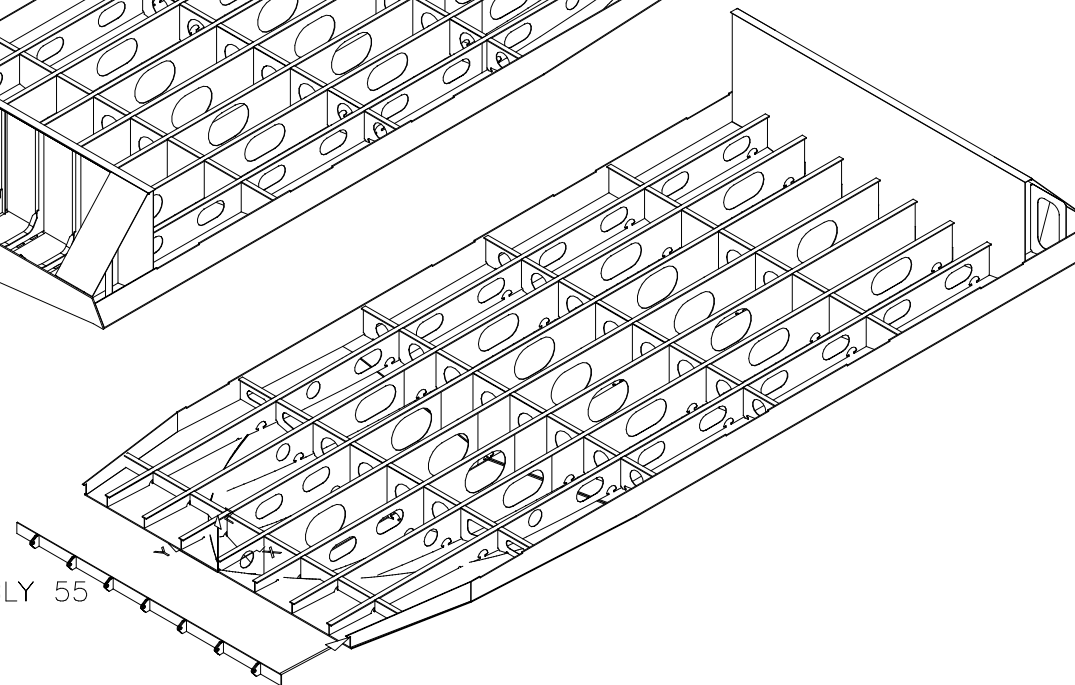
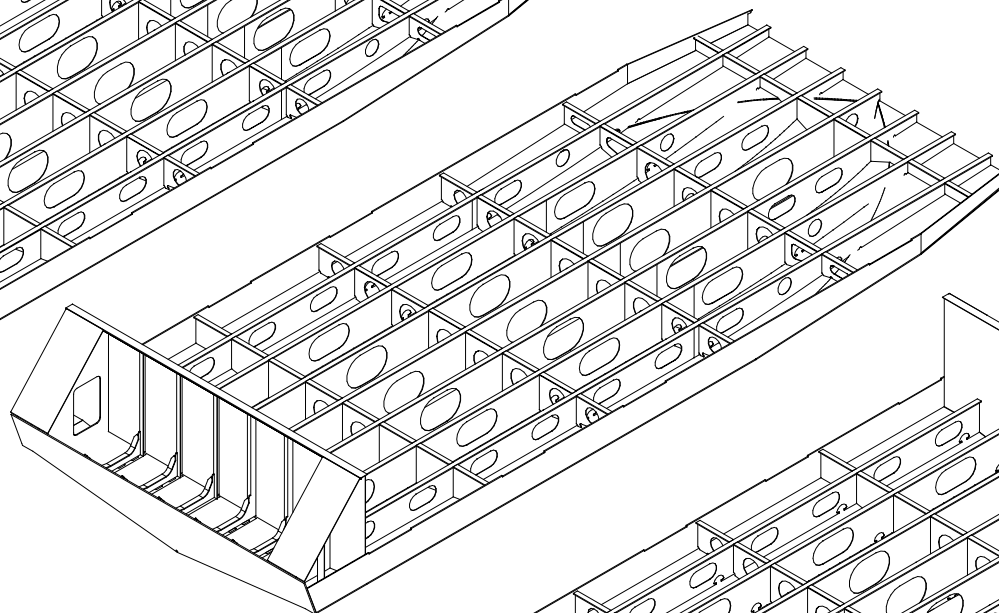
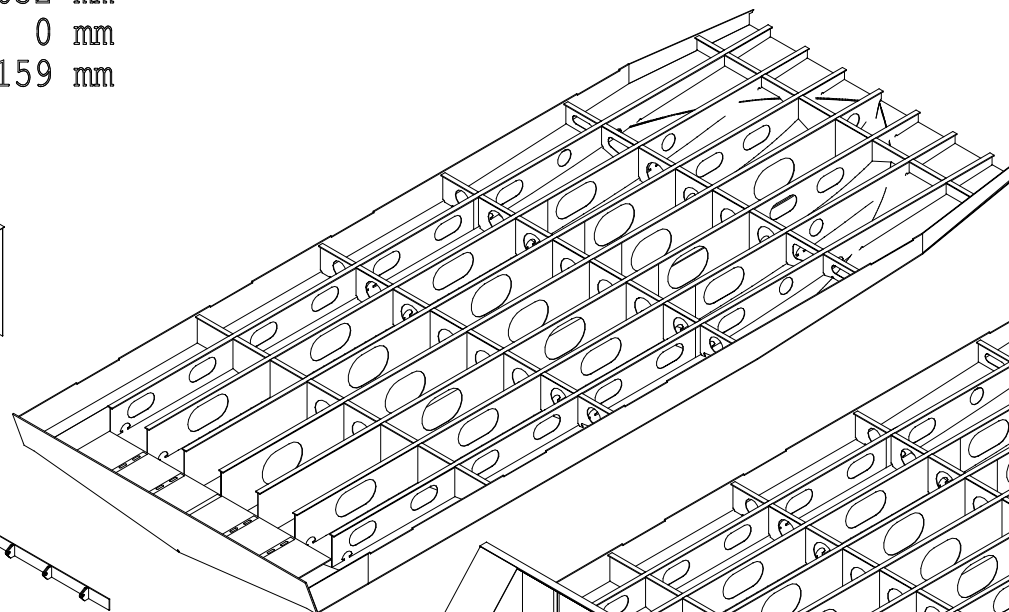
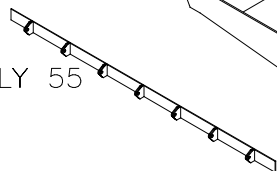
Z = - 159 mm

PANEL 004



PANEL 001

SUB-ASSEMBLY 55



ALL NEW WELDINGS



SUB-ASSEMBLY 55

TAN s.l.

Date :
18/10/2012

PROJECT
LC40'

Panel005.- Botton - 2

EQUAL ASSEMBLIES 1
SIMMETRICAL ASS. : 0

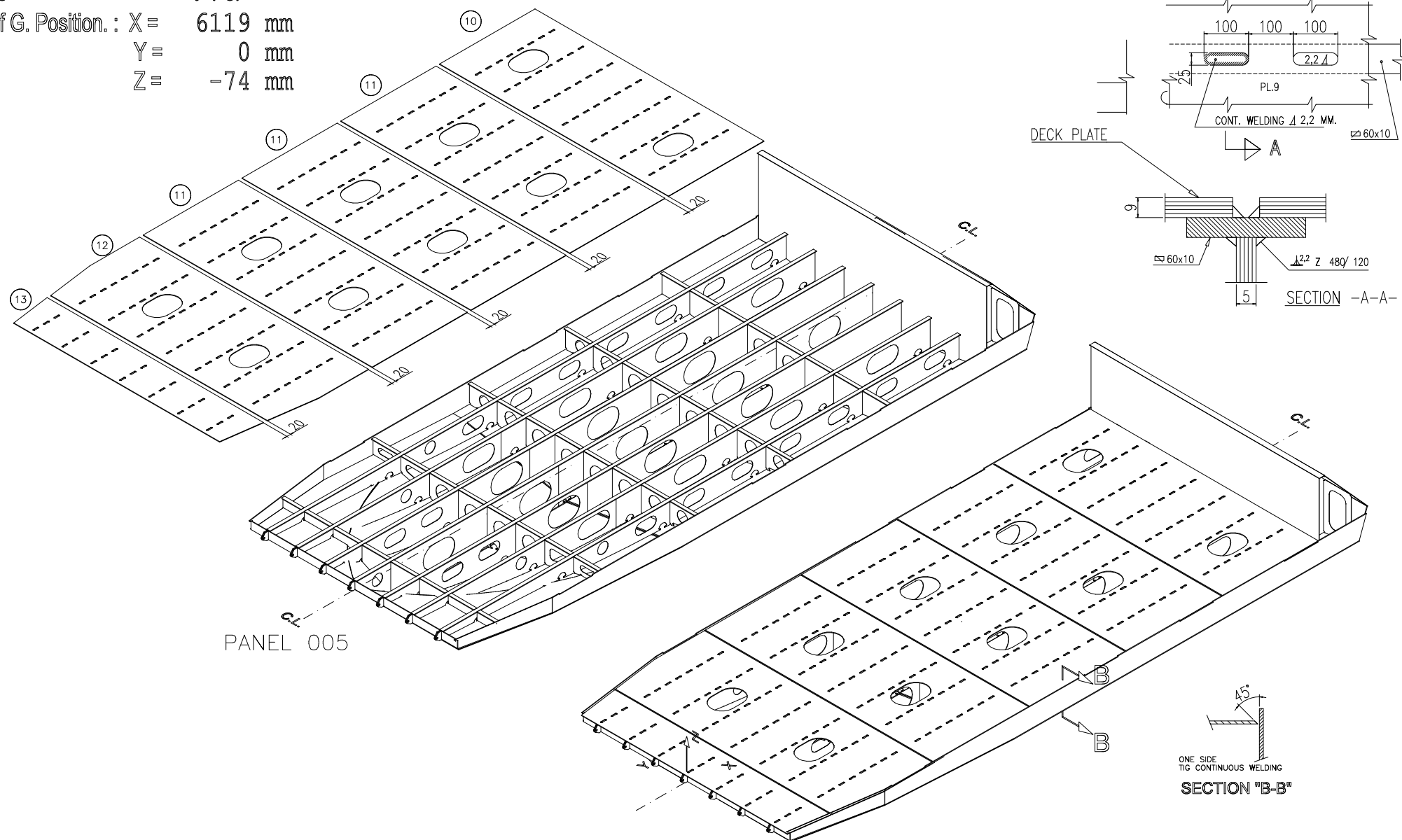
Main ASSEMBLY :
001

Weight of the Sub-Assembly (kg) : 3546

C. of G. Position. : X = 6119 mm

Y = 0 mm

Z = -74 mm



TAN s.l.

Date :
19/10/2012

PROJECT
LC40'

Panel006.- Bottom+Deck

EQUAL ASSEMBLIES 1
SIMMETRICAL ASS. : 0

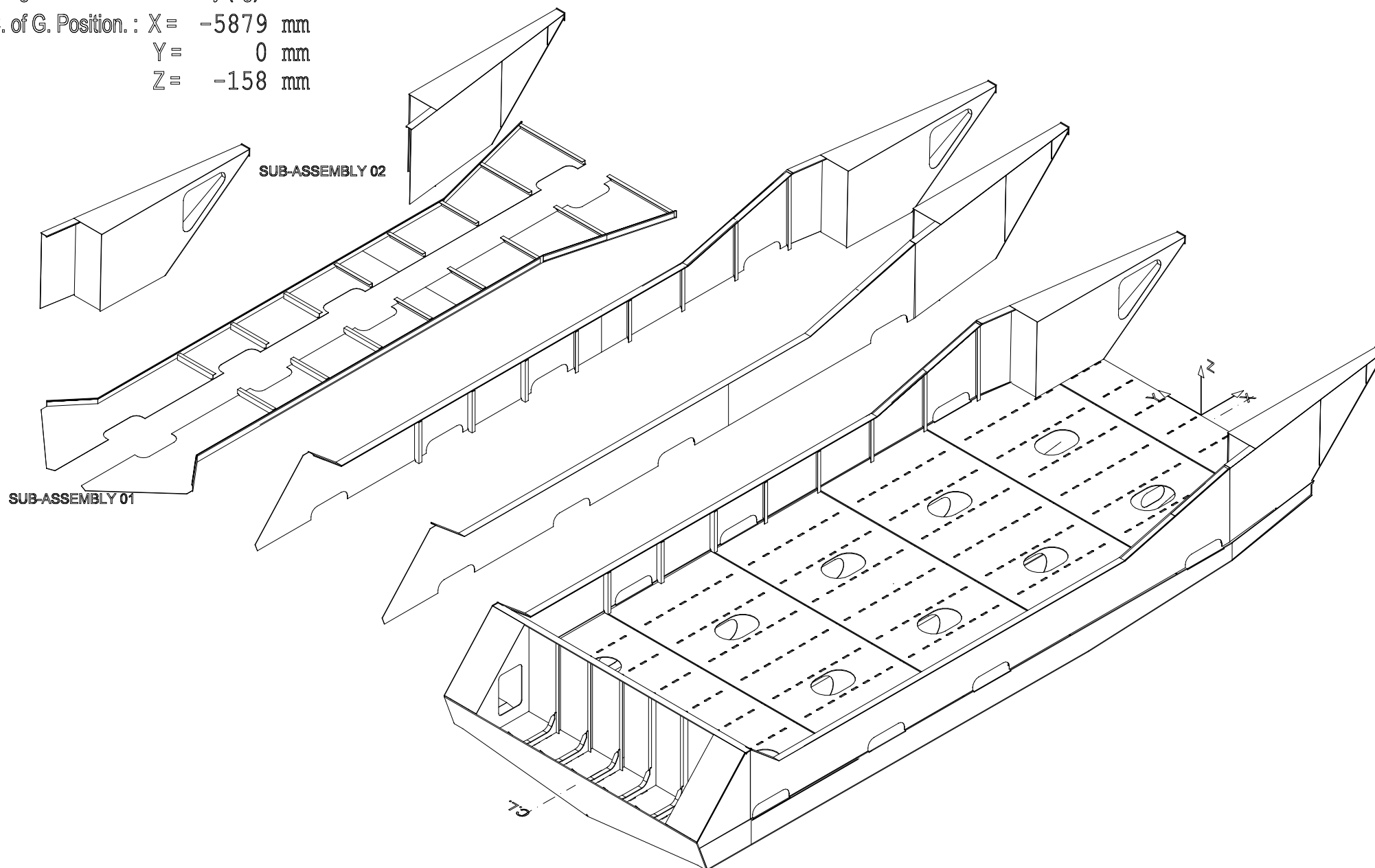
Main ASSEMBLY :
001

Weight of the Sub-Assembly (kg) : 3395

C. of G. Position. : X = -5879 mm

Y = 0 mm

Z = -158 mm



TAN s.l.

Date :
22/10/2012

PROJECT
LC40'

Panel007.- Bottom + Side shell + bulwark

EQUAL ASSEMBLIES 1
SIMMETRICAL ASS. : 1

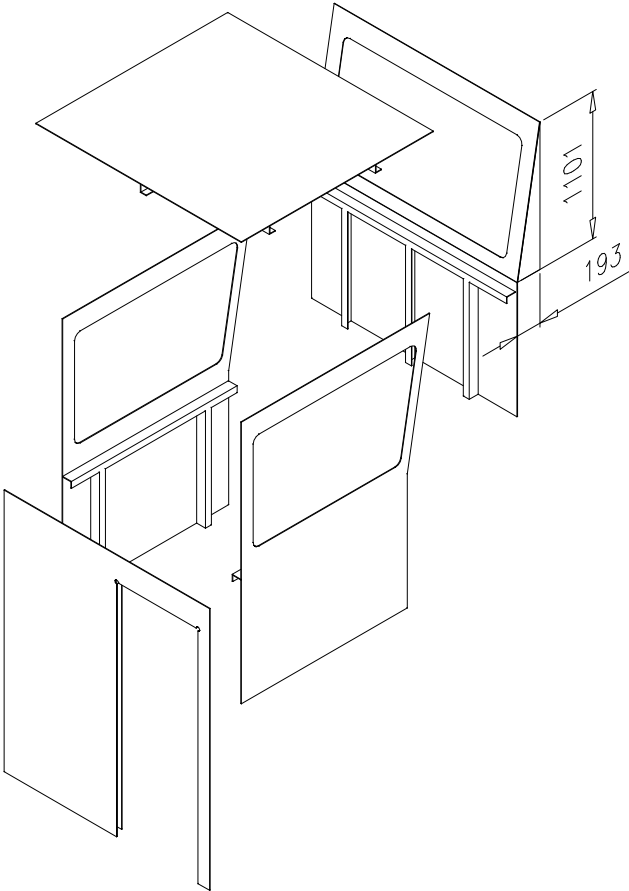
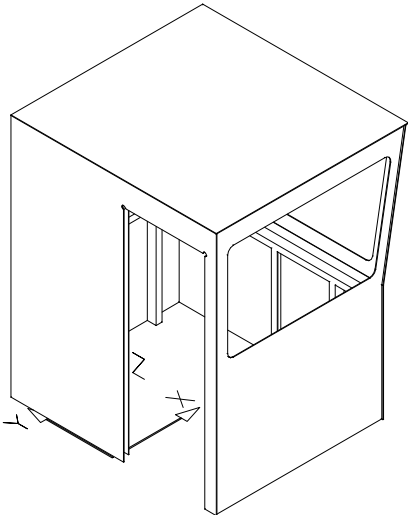
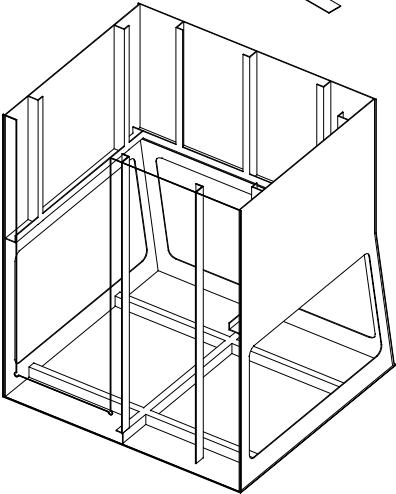
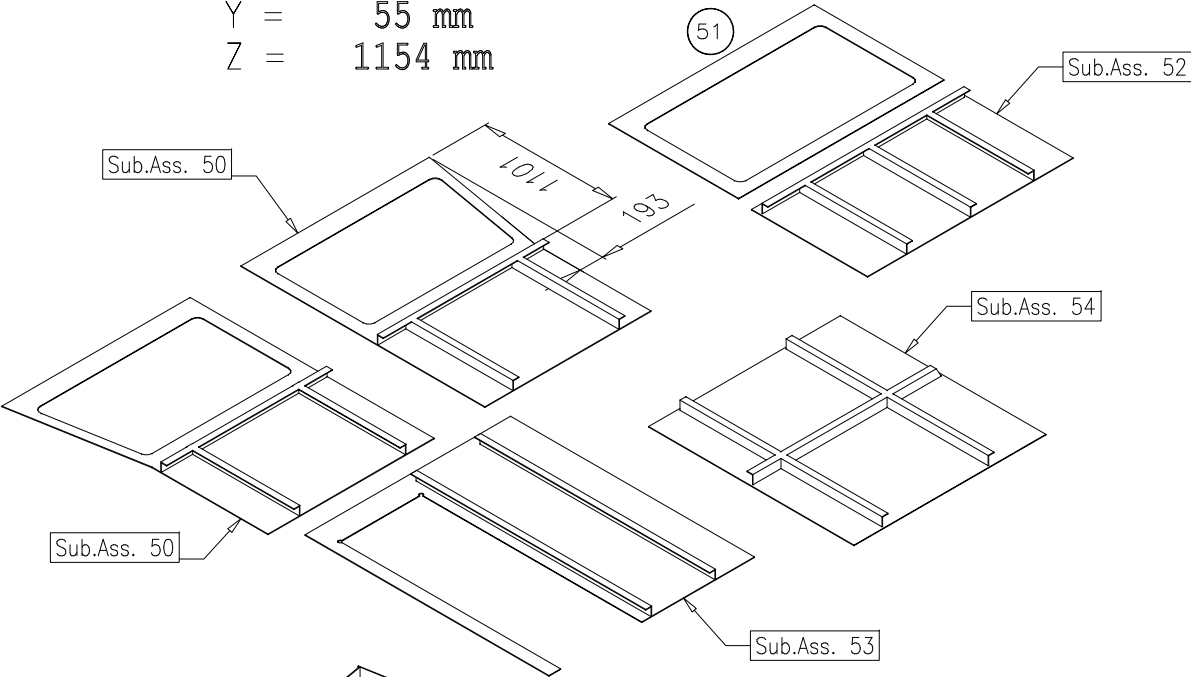
Main ASSEMBLY :
001

Weight of the Sub-Assembly (kg) :

C. of G. Position. : X =750 mm

Y = 55 mm

Z = 1154 mm



ALL NEW WELDINGS  2,2

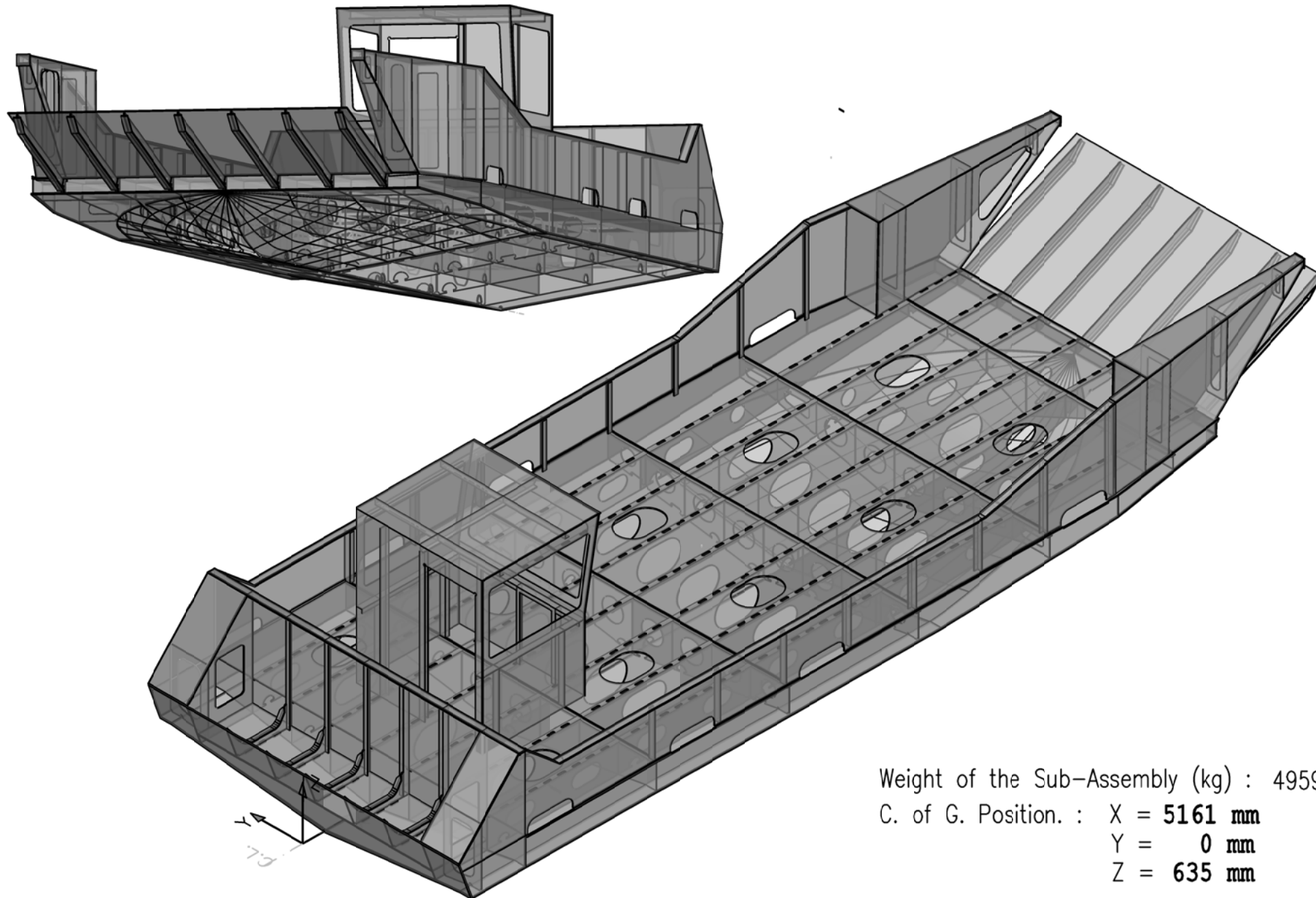
TAN s.l.

Date : 24/10/2012
PROJECT LC40'

Panel008. – Pilot House

EQUAL ASSEMBLIES 1
SIMMETRICAL ASS. : 0

Main ASSEMBLY :
001



Weight of the Sub-Assembly (kg) : 4959
 C. of G. Position. : X = **5161 mm**
 Y = **0 mm**
 Z = **635 mm**

TAN s.l.

Date : 31/10/20
 PROJECT 2LC 40'

LANDING CRAFT 40'

EQUAL ASSEMBLIES
 SIMMETRICAL ASS. :

Main ASSEMBLY :
 001