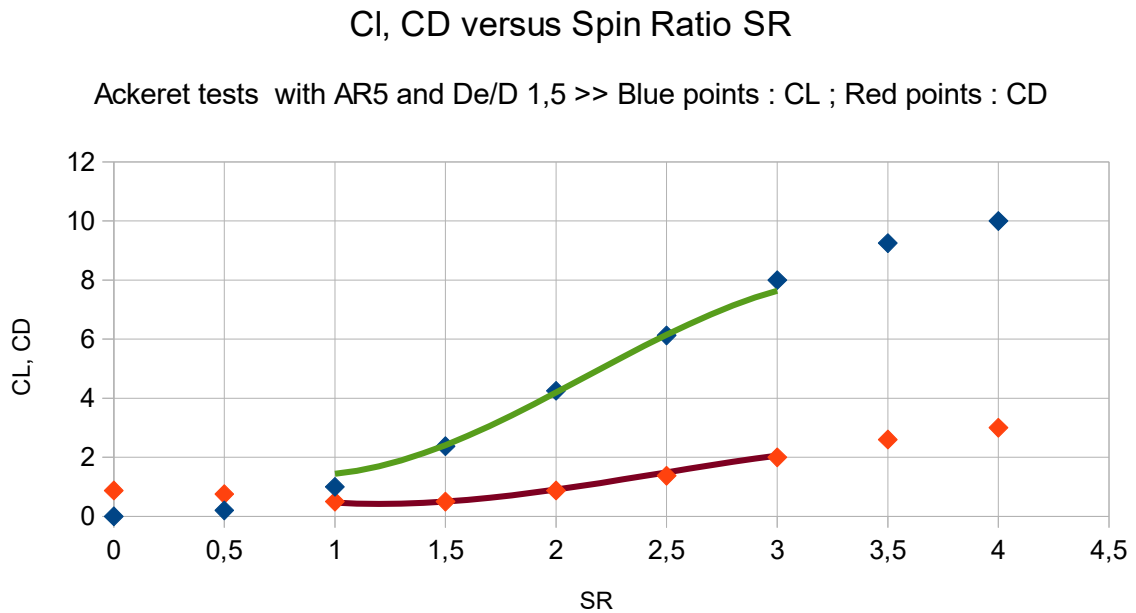


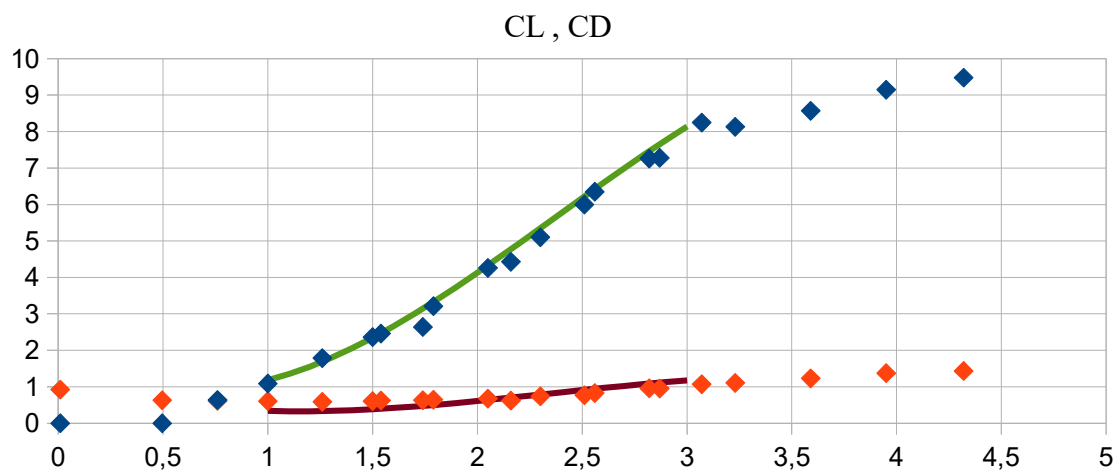
Comparison with Ackeret test results with an end plate (as reported by Pearson 2014) :

Input : $AR = 5$; $De/D = 1,5$; SR 1 to 3



Comparison with Naca Reid results (1924) without end plate :

Input : $AR = 8$; $De/D = 1$; SR = 1 to 3



Power to rotate - coefficient CP cyl.

Naca Reid tests : red points

Formula : blue

