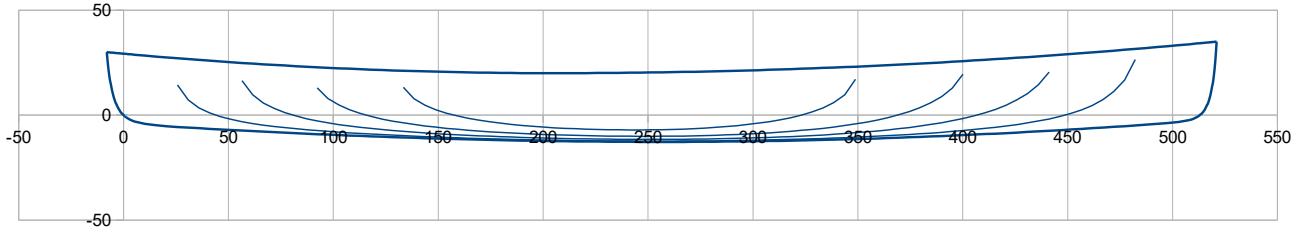


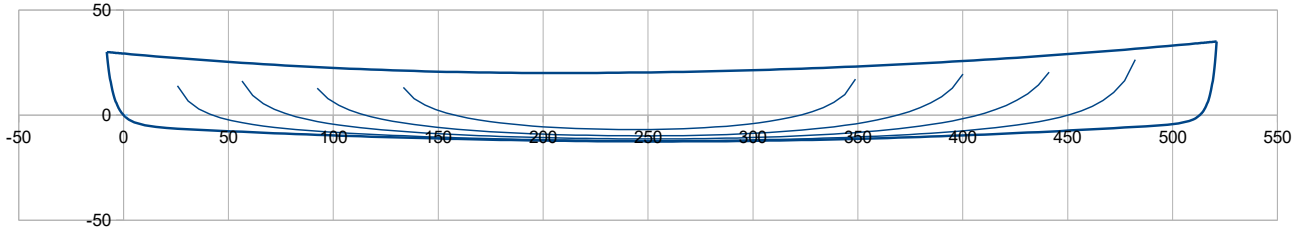
Canoe – Rocker investigation

At constant : Loa, Lwl, Boa, Bwl (quasi), Sheer line top and profile views, Displacement (200kg)

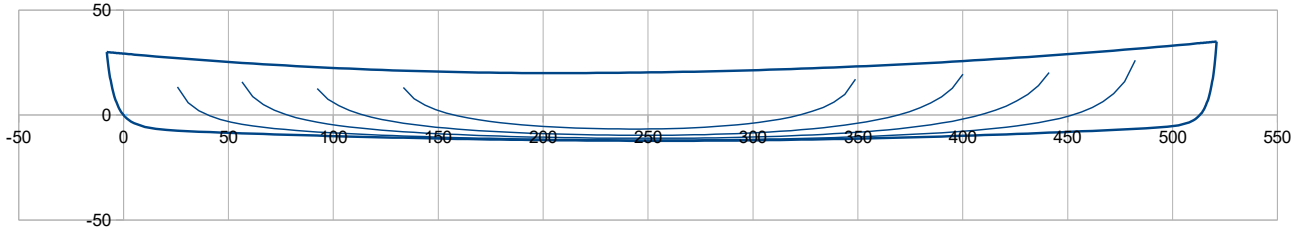
60 >>> $C_p = 48,0$; $S_w = 2,72 \text{ m}^2$



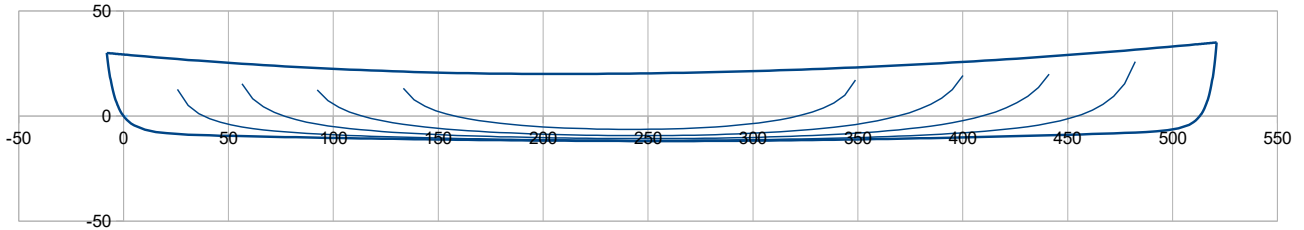
50 >>> $C_p = 48,9$; $S_w = 2,74 \text{ m}^2$



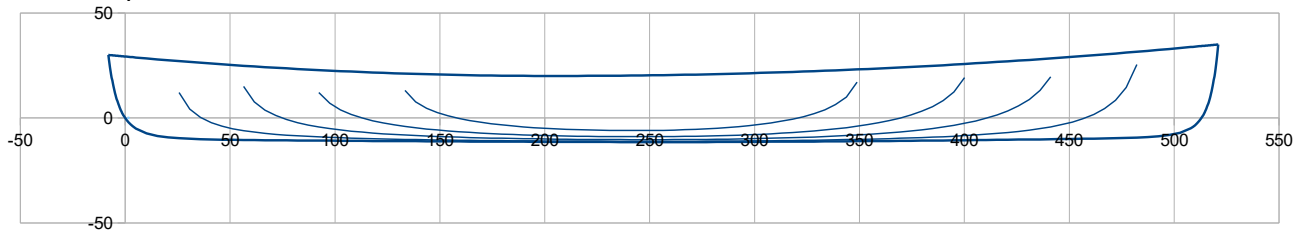
40 >>> $C_p = 50,1$; $S_w = 2,77 \text{ m}^2$



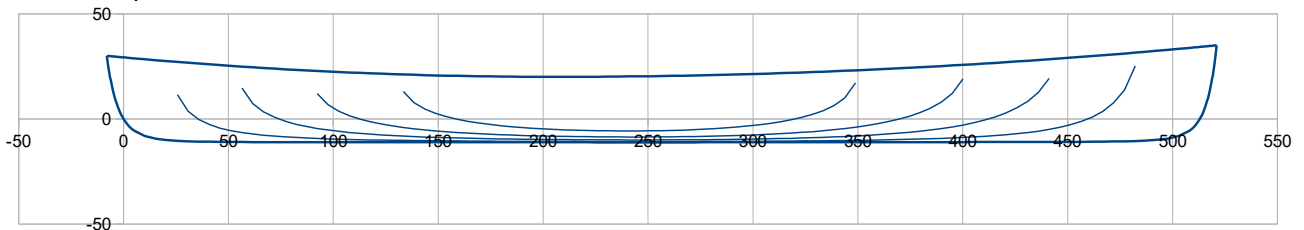
30 >>> $C_p = 51,9$; $S_w = 2,79 \text{ m}^2$



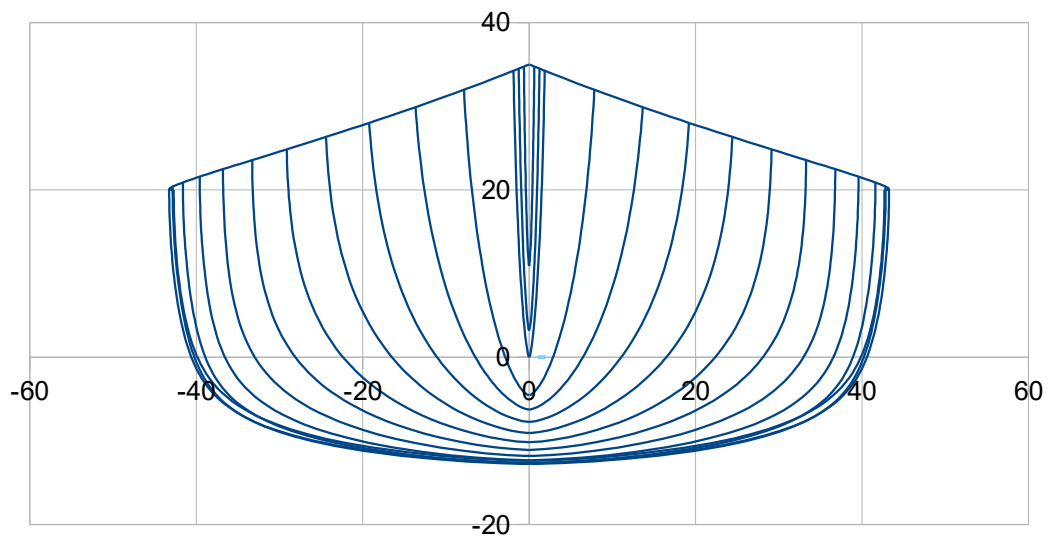
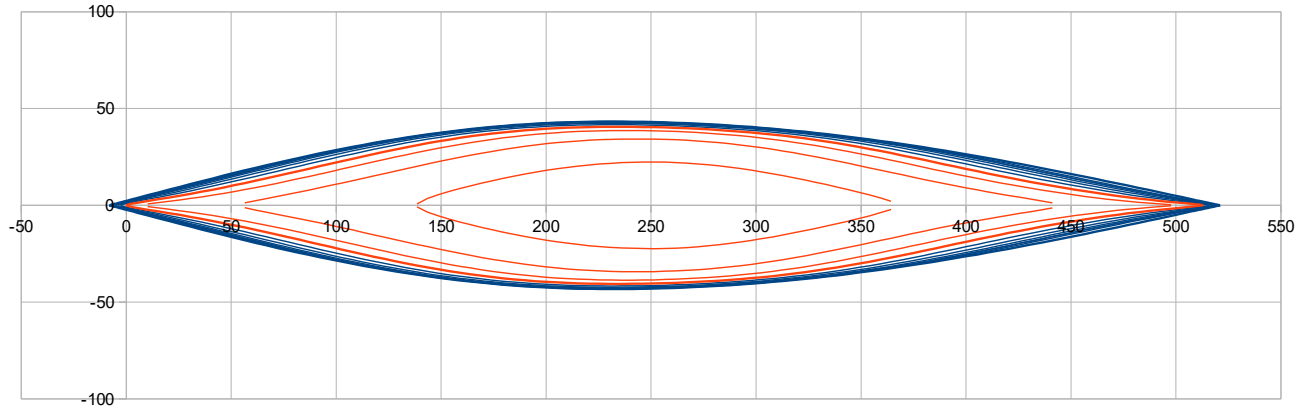
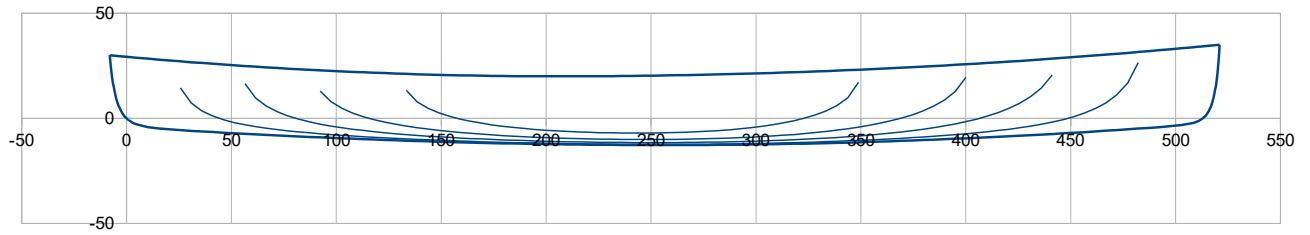
20 >>> $C_p = 54,0$; $S_w = 2,83 \text{ m}^2$



10 >>> $C_p = 55,9$; $S_w = 2,85 \text{ m}^2$



Linesplan with a lot of rocker



Linesplan with no rocker

