

FORD CORTINA G.T. 1600 c.c.
CROSSFLOW ENGINE

formula FORD

14'-0"

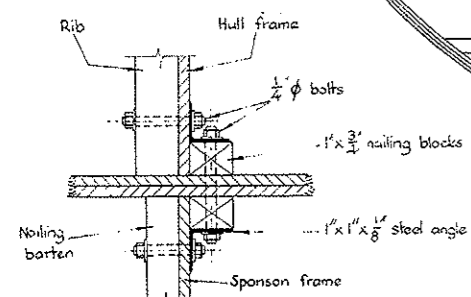
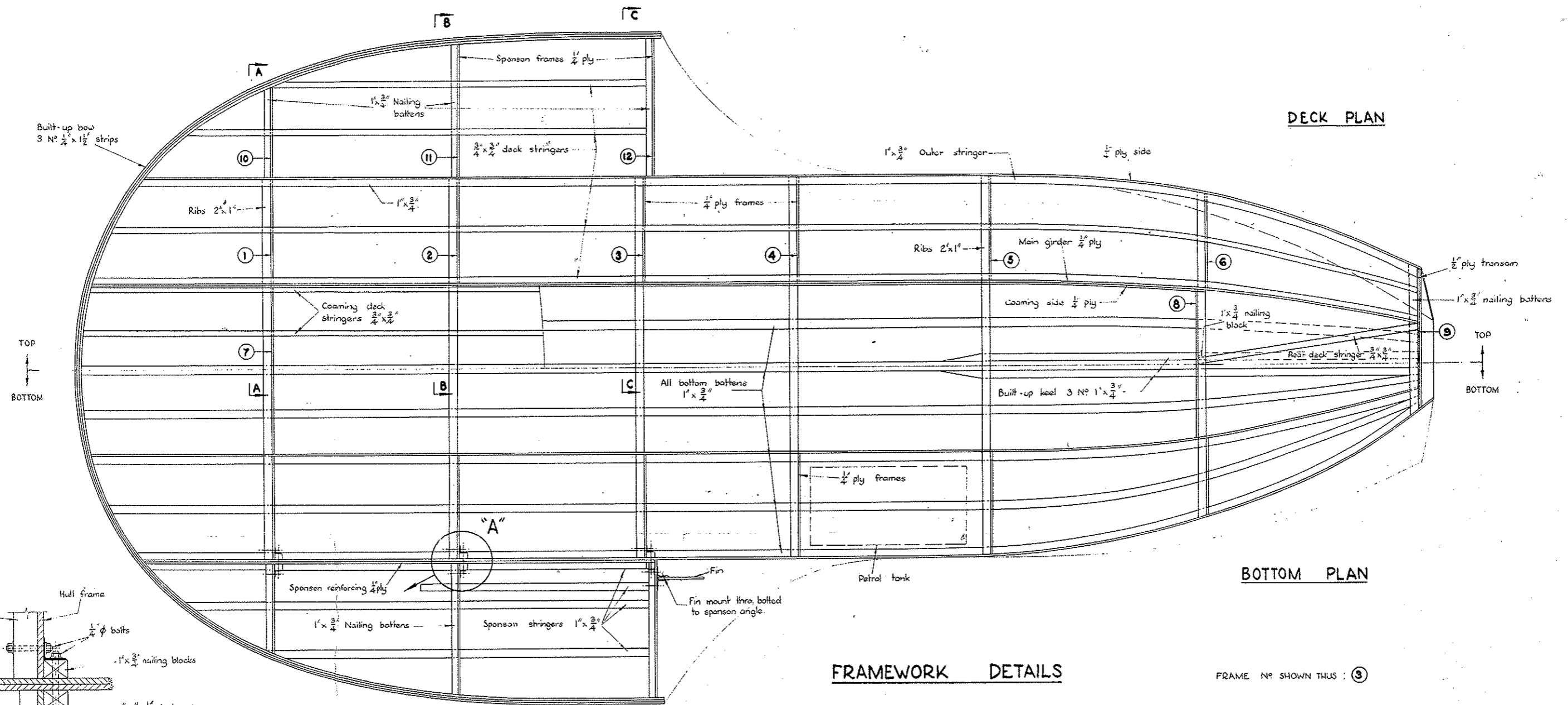
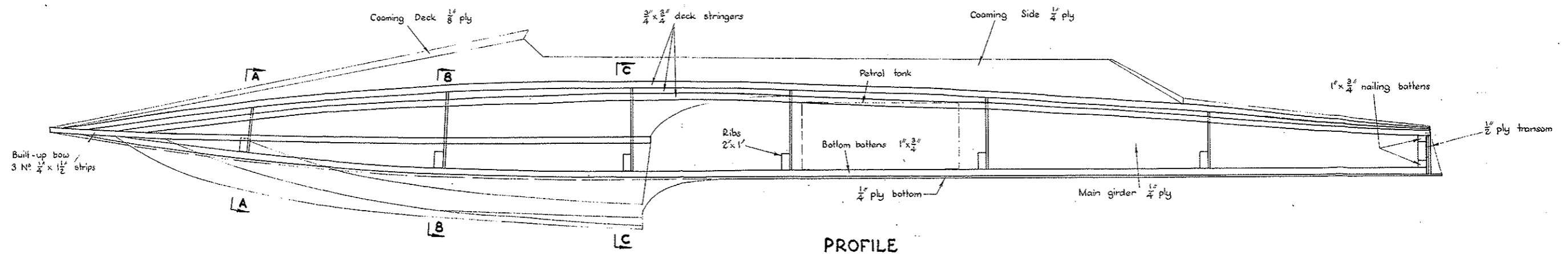
7'-0"

4'-0"

© Copyright

FORMULA FORD HYDROPLANE CLUBMAN JUNIOR

DESIGNED	R. HAYLOCK	SCALE	2" = 1'0"	Sheet No.	1
DRAWN	R. HAYLOCK	DATE	JUNE, 1971	NO. OF SHEETS	6



FRAMEWORK DETAILS

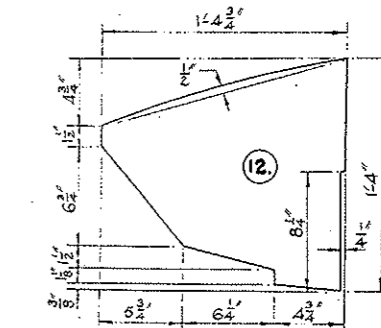
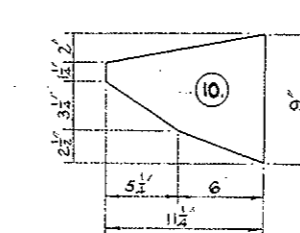
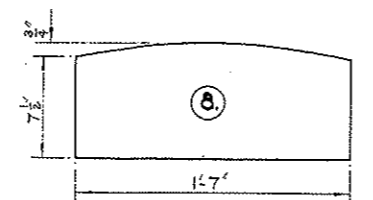
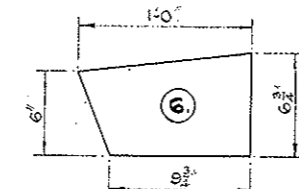
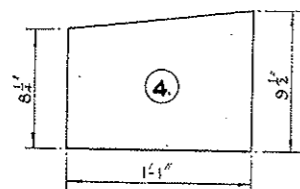
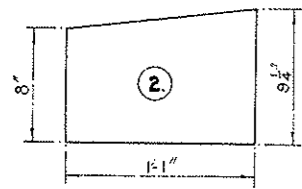
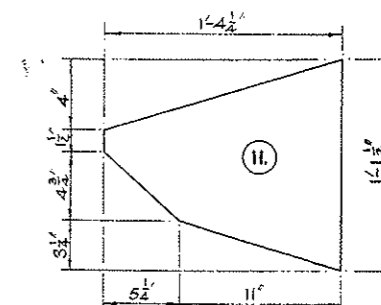
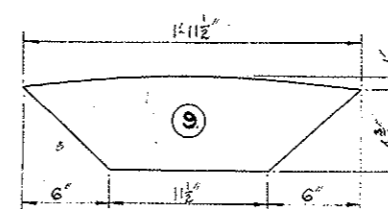
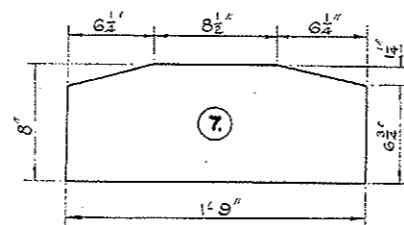
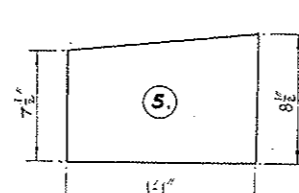
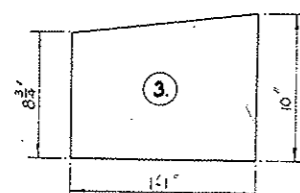
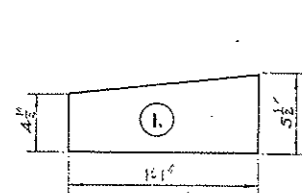
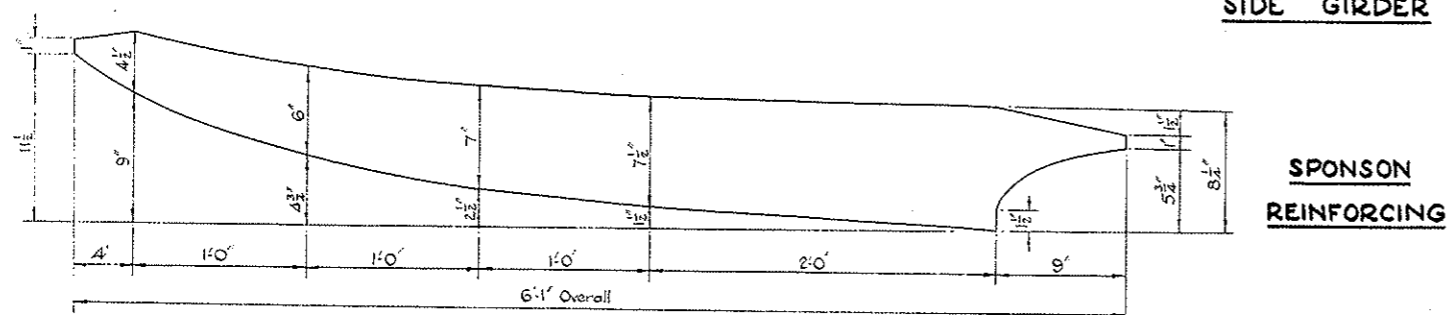
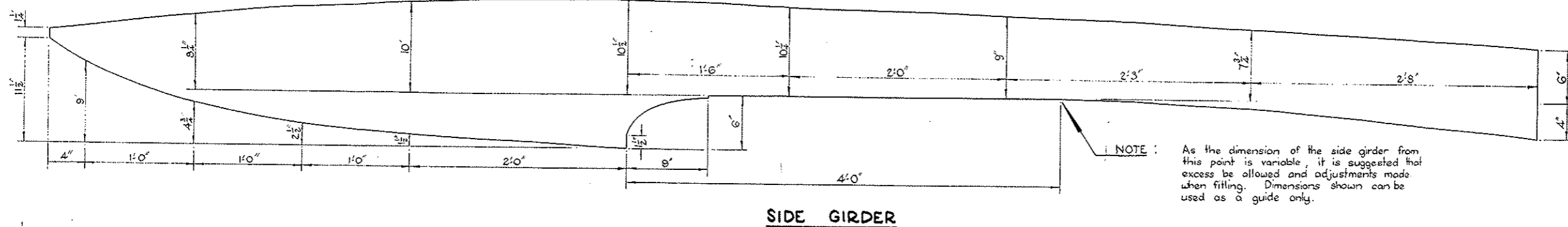
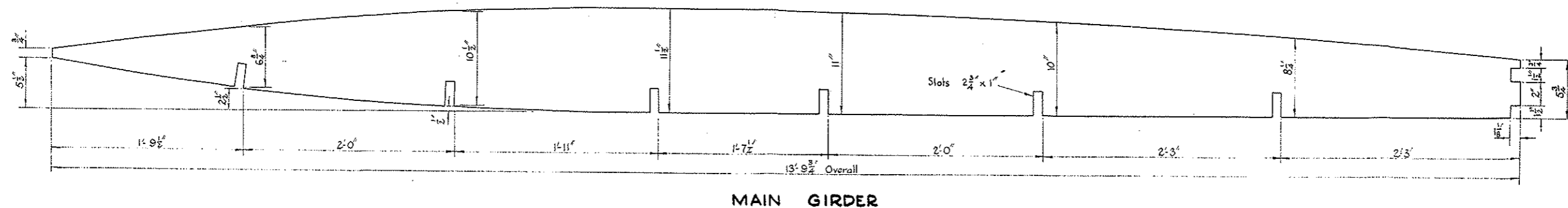
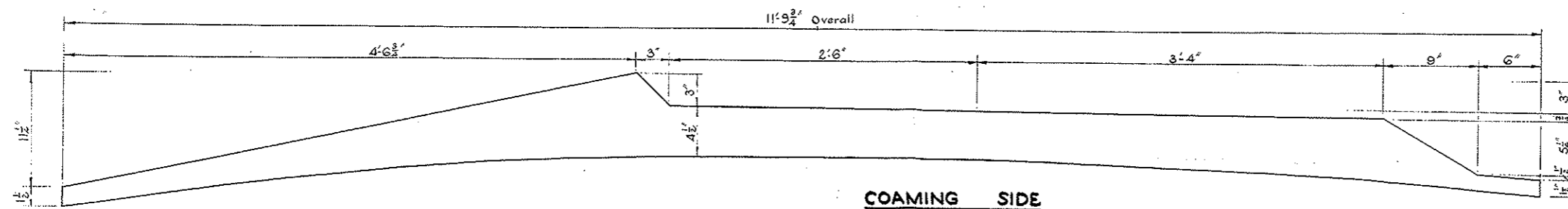
FRAME NO SHOWN THUS : ③

© Copyright

FORMULA FORD HYDROPLANE CLUBMAN JUNIOR

DESIGNED : R. HAYLOCK	SCALE : 2" = 1'-0"	SHEET 2	NO OF SHEETS 6
DRAWN : R. HAYLOCK	DATE : JUNE, 1971		

Scale : Half full size



1. TO 6. HULL SIDE FRAMES 2 N° OFF EACH

REAR DECK FRAME (CENTRE)
1 N° OFF

COAMING FRAME 1 N° OFF

TRANSOM 2 N° OFF

10, 11 & 12 SPONSON FRAMES 2 N° OFF EACH

FORMULA FORD HYDROPLANE
CLUBMAN JUNIOR

DESIGNED: R. HAYLOCK SCALE: 2" = 1'-0" SHEET 3 N° OF SHEETS 6
DRAWN: R. HAYLOCK DATE: JUNE, 1971

SECTION A-A

SECTION B-B

SECTION C-C

Scale : 4" = 1'-0"

SPONSON ASSEMBLY

Not to Scale

FRAMING FOR
SPONSON REINFORCING

Not to Scale

SPONSON FRAMING

Not to Scale

SPONSON FRAMING

Not to Scale

FRAME ASSEMBLY
REAR VIEW

Not to Scale

TRANSOM FRAMING

FRONT VIEW

Not to Scale

VIEW FROM TOP

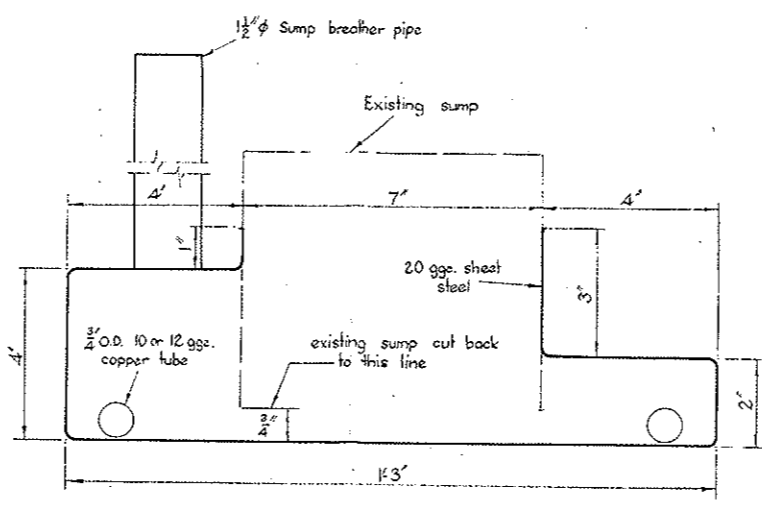
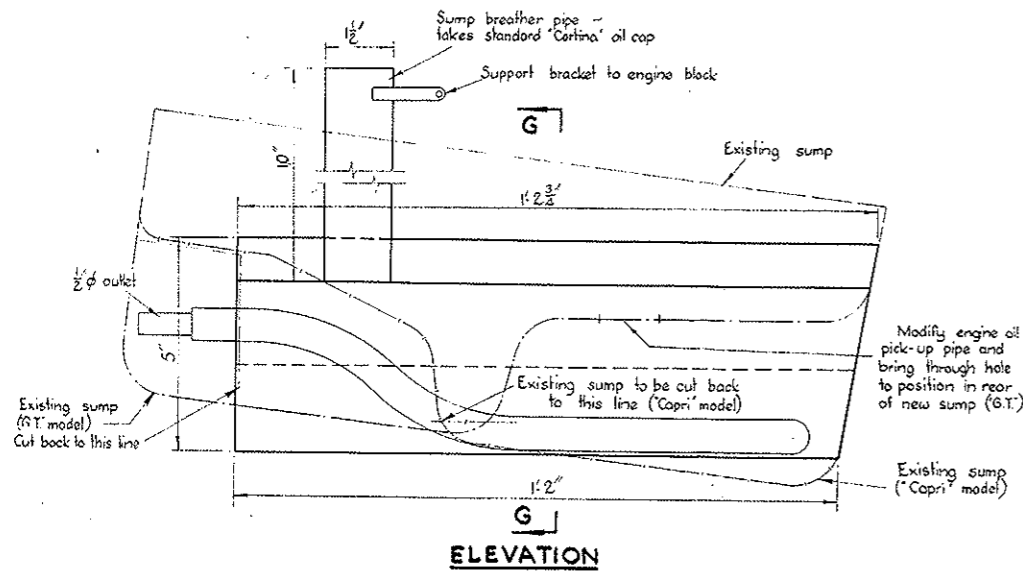
FRAME No SHOWN THUS : (3)

ASSEMBLY DETAILS

© Copyright

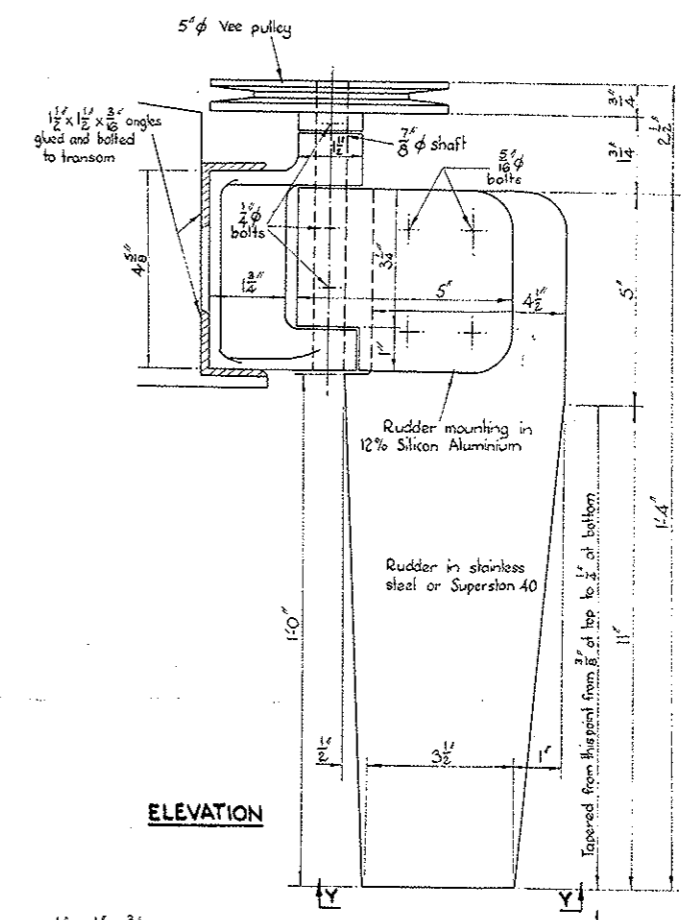
FORMULA FORD HYDROPLANE
CLUBMAN JUNIOR

DESIGNED : R. HAYLOCK	SCALE : 4" = 10"	SHEET No	4	No OF SHEETS	6
DRAWN : R. HAYLOCK	DATE : JUNE, 1971				

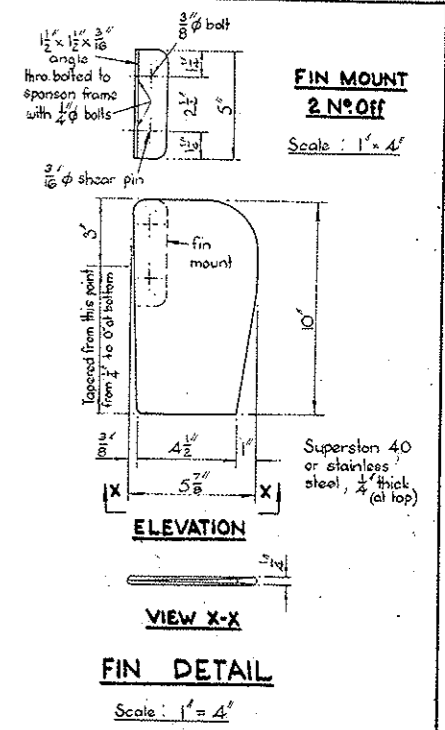


SUMP DETAILS
Scale: Half Size

SECTION G-G

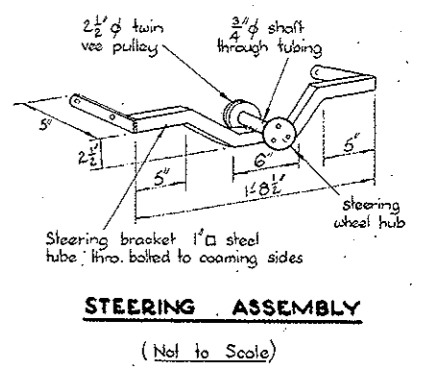


ELEVATION

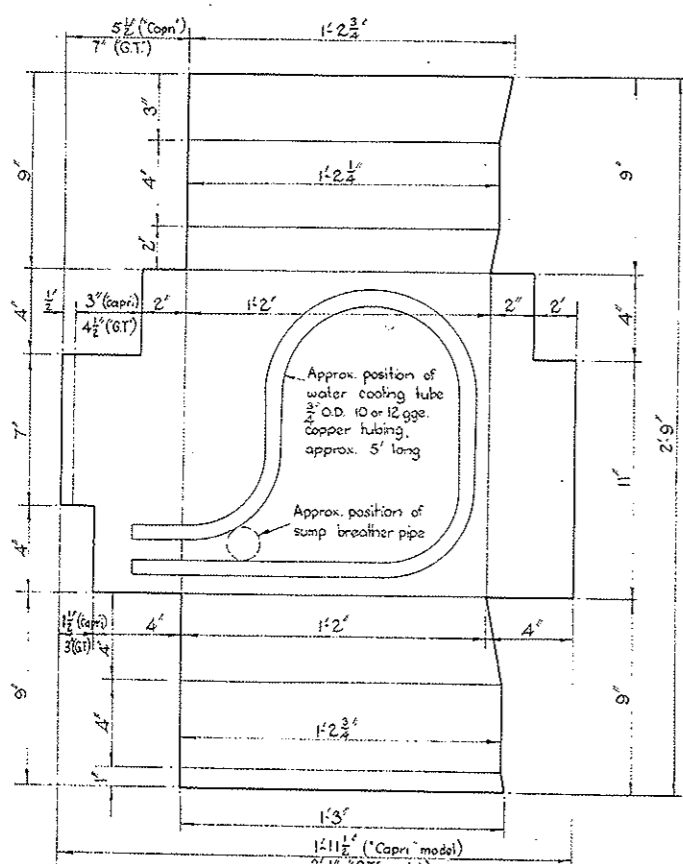


FIN MOUNT
2 N° off
Scale: 1" = 4"

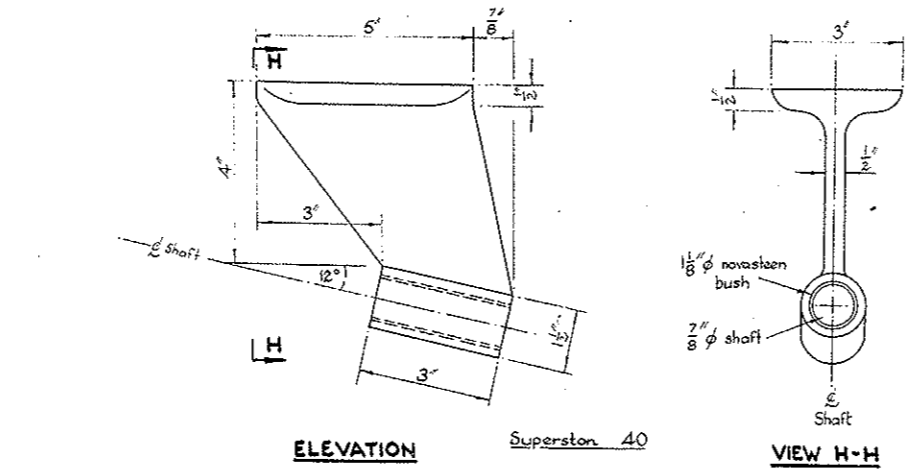
VIEW X-X
Scale: 1" = 4"



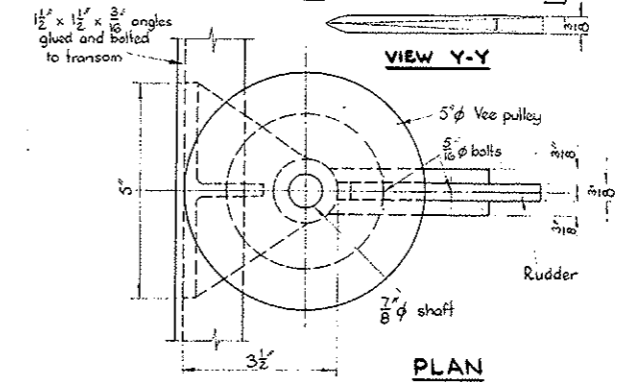
STEERING ASSEMBLY
(Not to Scale)



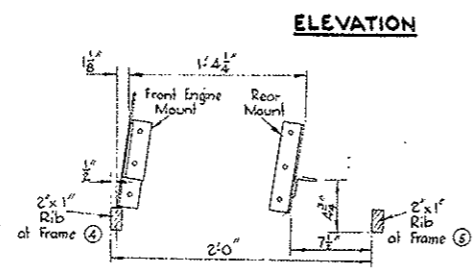
SUMP PATTERN - 20 gage Steel Sheet
Scale: 1" = 4"



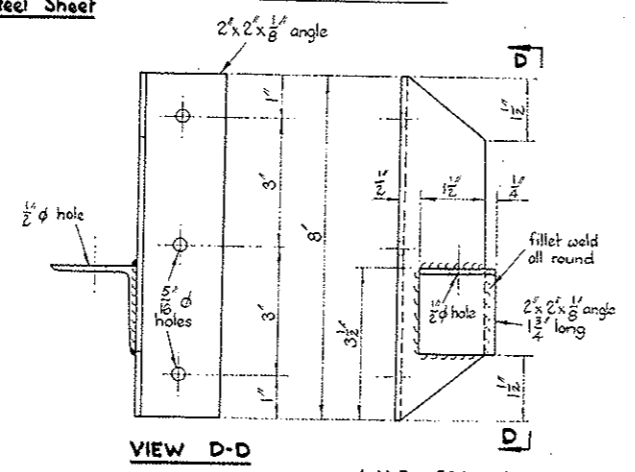
SKEG DETAILS
Scale: Half Size



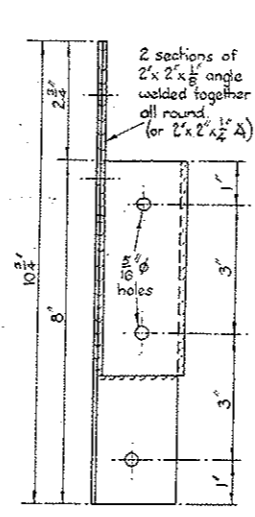
RUDDER AND RUDDER MOUNTING
Scale: Half Size



LOCATION OF ENGINE MOUNTS
Scale: Quarter size

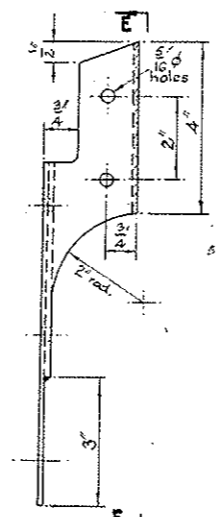


REAR ENGINE MOUNT BRACKETS
Scale: Half Size



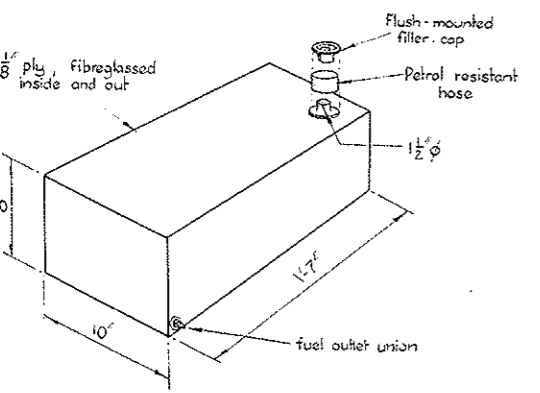
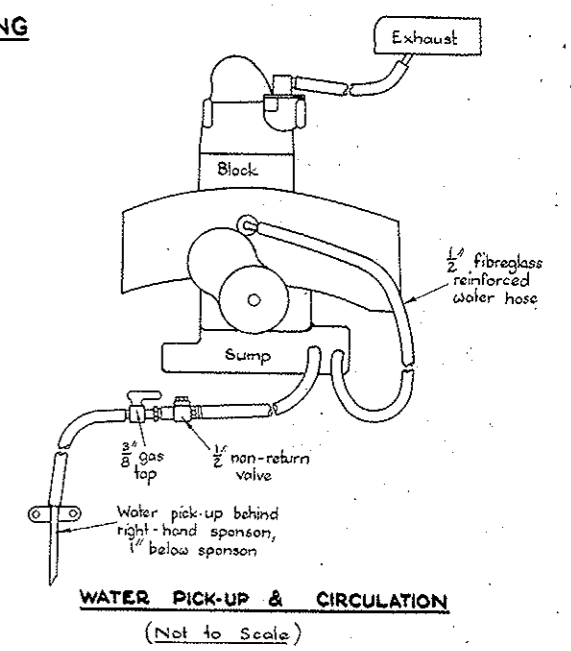
L.H.S. FROM FRONT

FRONT ENGINE MOUNT BRACKETS
Scale: Half Size



R.H.S. FROM FRONT

VIEW F-F

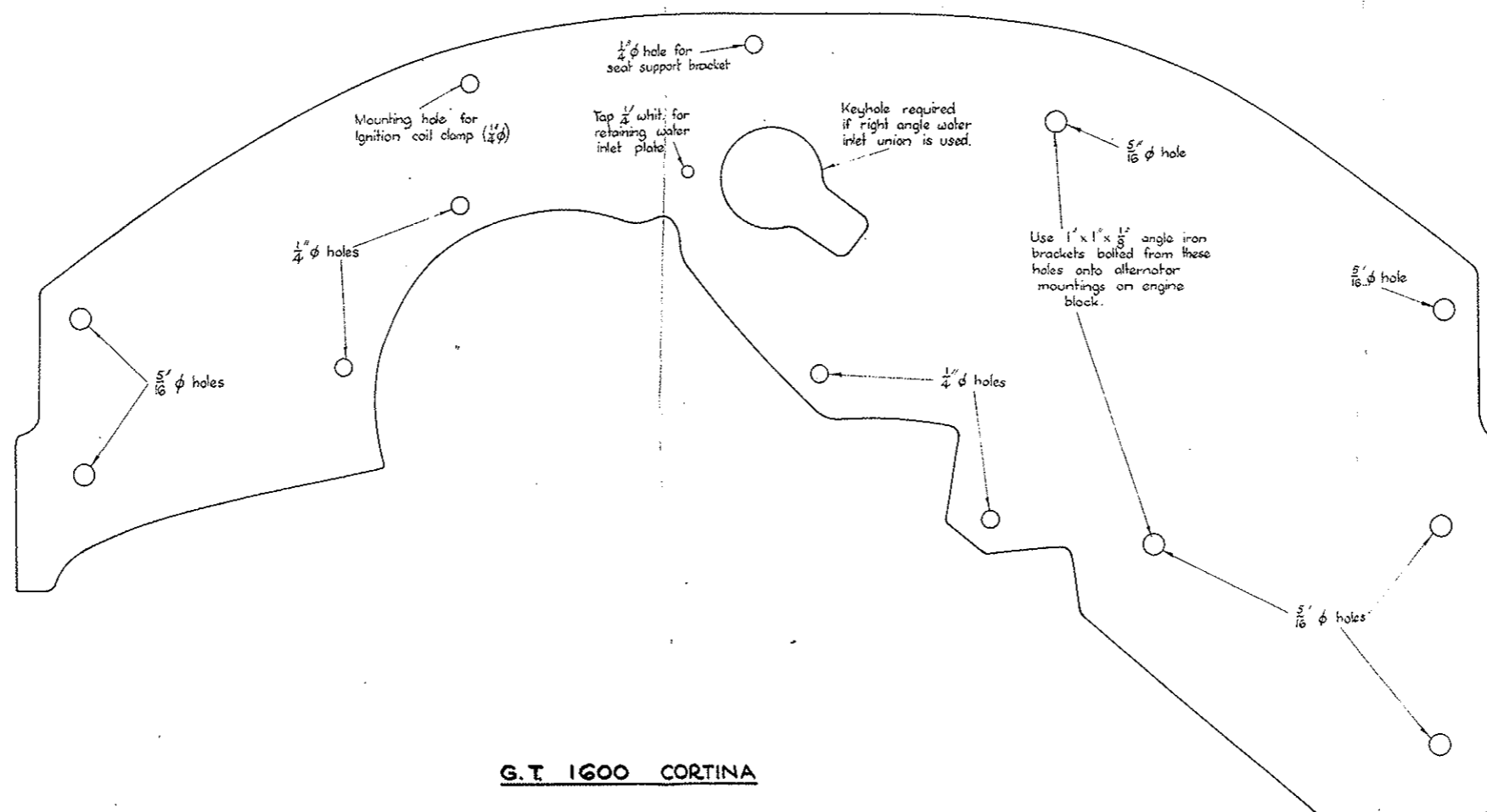


PETROL TANK
(Not to Scale)

NOTE: Designed to suit S.J. Brown rear engine mount. (R.H.S. IDENTICAL, OPPOSITE HAND)

© Copyright

FORMULA FORD HYDROPLANE			
CLUBMAN JUNIOR			
DESIGNED : R HAYLOCK	SCALE : As shown	SHEET 5	N° OF SHEETS 6
DRAWN : R. HAYLOCK	DATE : JUNE, 1971		



G.T. 1600 CORTINA
FRONT ENGINE MOUNTING PLATE
3/16" Aluminium Alloy
Full Size

© Copyright.

FORMULA FORD HYDROPLANE CLUBMAN JUNIOR				
DESIGNED : R.HAYLOCK	SCALE : FULL SIZE	SHEET N°	6	N° OF SHEETS 6
DRAWN : R.HAYLOCK	DATE : JUNE, 1971			