



# SECTION 2

## ENGINE DIMENSIONS, MOUNTING & MOUNTING EQUIPMENT

Engine Mounting Dimensions (Transom Only).....	2-1
Engine Mounting.....	2-2
Transom Mounting Patterns.....	2-14





## Engine Mounting Dimensions (Transom Only)

**ENGINE MOUNTING DIMENSIONS  
(TRANSM ONLY)**

Proper mounting of the outboard will mean better performance, maximum reliability, and maximum customer satisfaction. This chapter contains the specifications necessary for motor mounting.

For correct mounting, the cavitation plate should be equal to the bottom of the transom, or 25mm± (1.0 inch). If higher mounting is used for performance applications, it is recommended that a water pressure gauge be installed so pressure can be monitored.

When mounting, also make sure the motor has the clearance to provide full movement, from both port to starboard, as well as during trim/tilt functions.

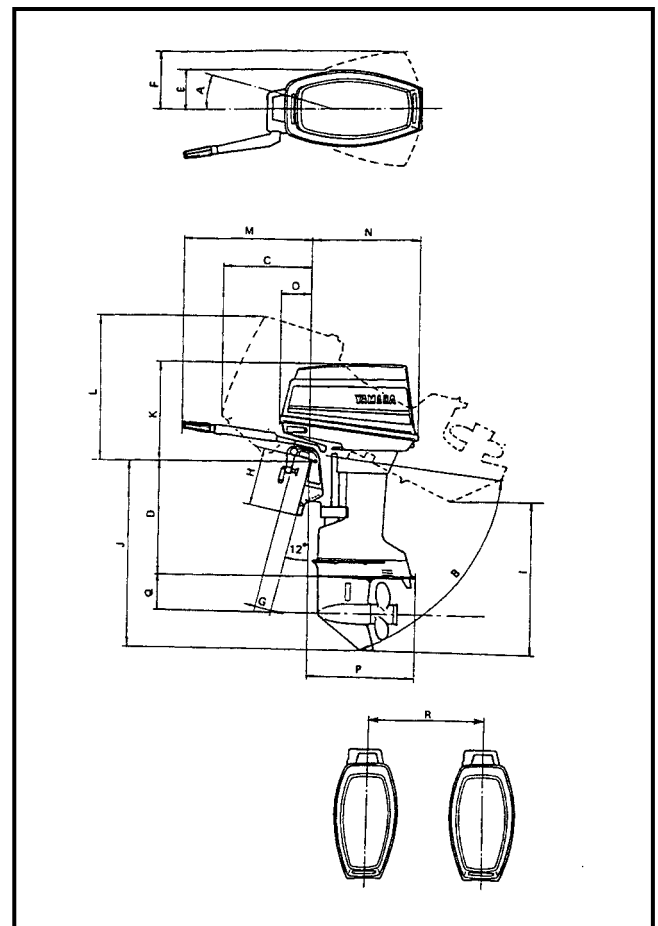
**NOTE: For bracket application -**

Refer to bracket manufacturer for installation specifications.

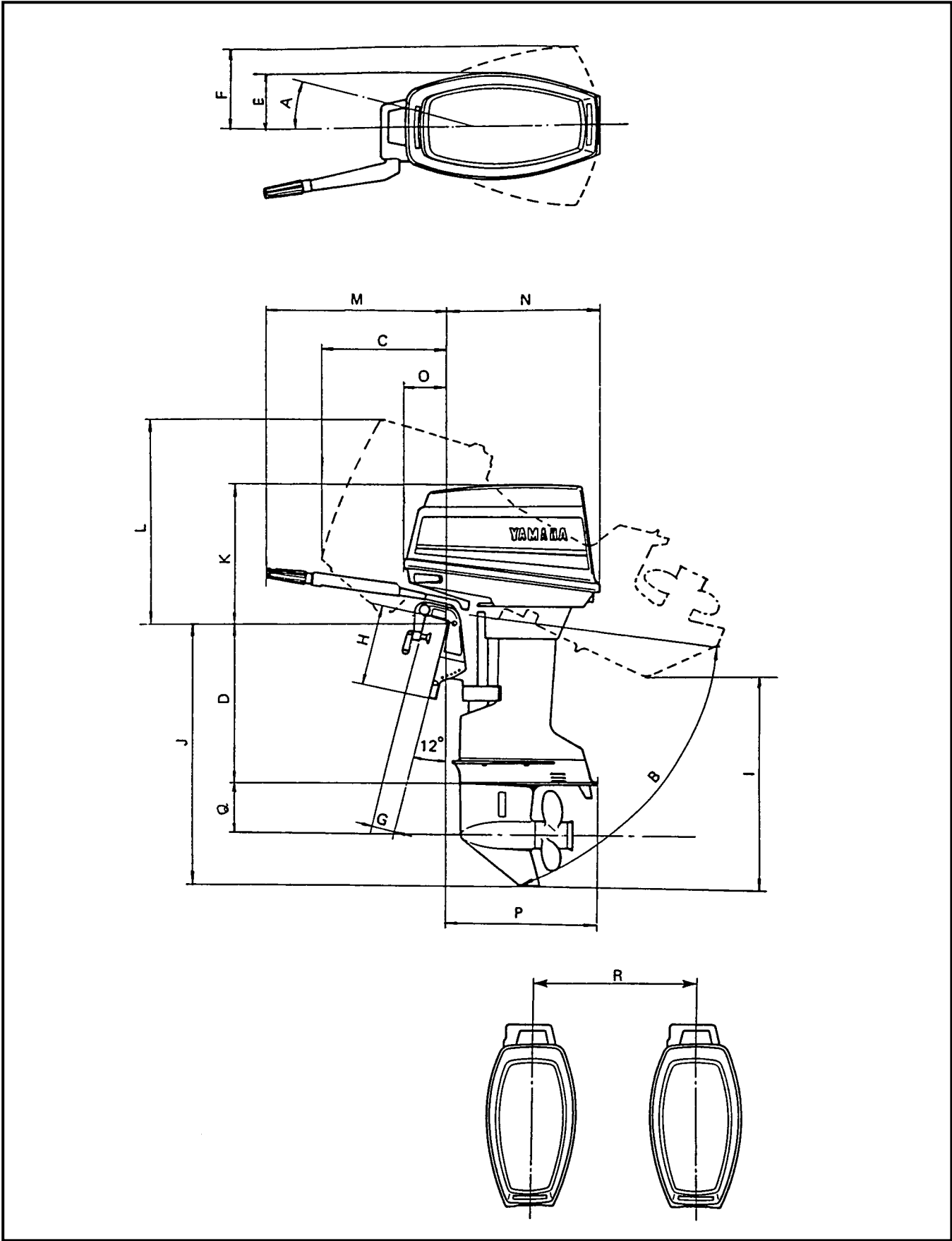
**Transom Dimensions**

- A = Steering Rotation (each way, from centerline)
- B = Maximum tilt angle (including 12° transom angle)
- C = Protrusion into boat at maximum tilt
- D = Cavitation plate distance from top of transom
- E = Steering clearance (each way, from centerline)
- F = Powerhead clearance at rear of motor (each way, from centerline)
- G = Transom thickness (minimum - maximum)
- H = Transom bracket height
- I = Chart
- J = Maximum engine depth from top of transom (0° trim)
- K = Powerhead height
- L = Maximum height at full tilt (powerhead)
- M = Protrusion into boat (tiller handle models)

- N = Maximum rearward protrusion of power head from transom
- O = Protrusion into boat (remote models)
- P = Maximum rearward protrusion of lower unit from transom (@ level trim)
- Q = Distance, propeller shaft from cavitation plate
- R = Minimum twin-engine center-to-center distance
- J+K = Overall height
- M+N = Overall depth (tiller models)
- N+O = Overall depth (remote models)



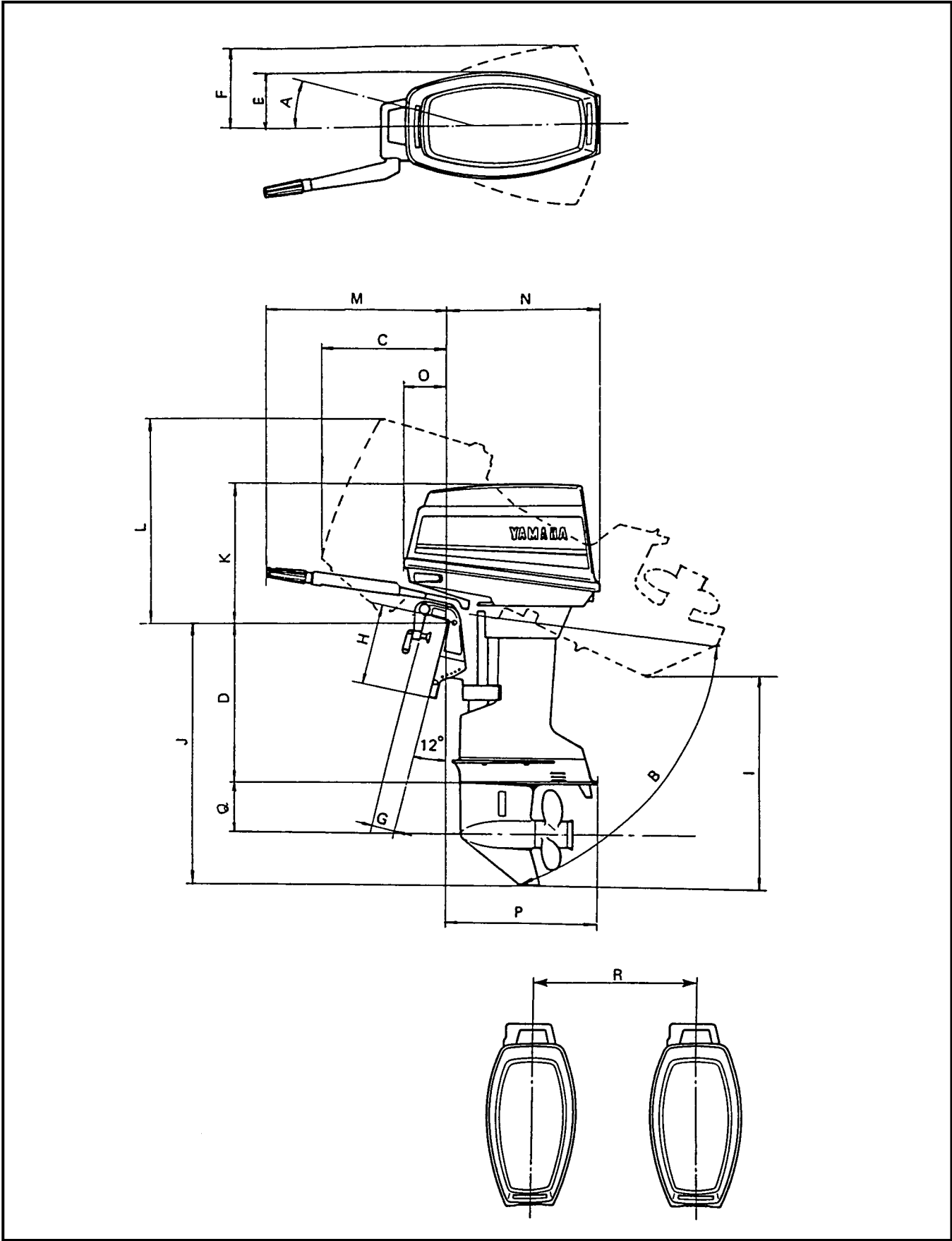
**Bolt Pattern:** Bolt patterns are on the following pages.





## 2 STROKE MODELS

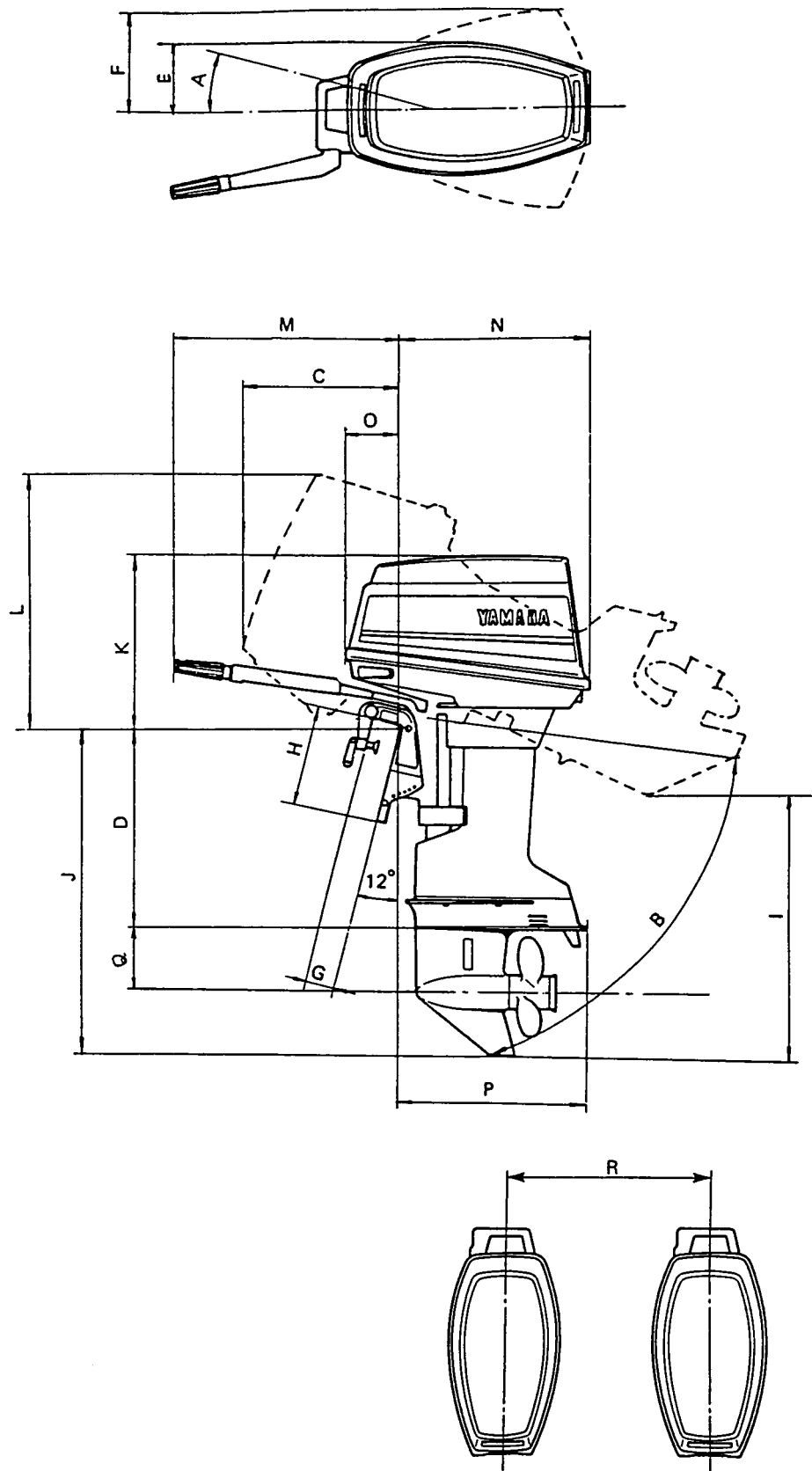
											mm	(in)
MODEL	A	B	C	D	E	F						
<b>2C S</b>	360 Degree	73 Degree	276 (10.9)	417 (16.4)	-- --	-- --						
<b>3A S</b>	360 Degree	76 Degree	311 (12.2)	441 (17.4)	108 (4.3)	-- --						
<b>4AC, 5C S</b>	360 Degree	76 Degree	331 (13.0)	444 (17.5)	144 (5.7)	-- --						
<b>5C L</b>	360 Degree	76 Degree	331 (13.0)	571 (22.5)	144 (5.7)	-- --						
<b>6C, 8C S</b>	60 Degree	81 Degree	287 (11.3)	436 (17.2)	150 (5.9)	283 (11.1)						
<b>6C, 8C L</b>	60 Degree	81 Degree	287 (11.3)	563 (22.2)	150 (5.9)	283 (11.1)						
<b>9.9F, 15F S</b>	45+40 Degree	63 Degree	314 (12.4)	440 (17.3)	143 (5.6)	280 (11.0)						
<b>15F L</b>	45+40 Degree	63 Degree	314 (12.4)	567 (22.3)	143 (5.6)	280 (11.0)						
<b>20D, 25N S</b>	40 Degree	67 Degree	337 (13.3)	419 (16.5)	-- --	296 (11.7)						
<b>20D, 25N L</b>	40 Degree	67 Degree	337 (13.3)	546 (21.5)	-- --	296 (11.7)						
<b>30DETO L</b>	40 Degree	61 Degree	356 (14.0)	547 (21.5)	154 (6.1)	310 (12.2)						
<b>30DMH S</b>	40 Degree	70 Degree	404 (15.9)	424 (16.7)	-- --	310 (12.2)						
<b>30DMH L</b>	40 Degree	70 Degree	404 (15.9)	545 (21.5)	-- --	310 (12.2)						
<b>40VETO, 50HETO L</b>	40 Degree	65 Degree	387 (15.2)	537 (21.1)	180 (7.1)	340 (13.4)						
<b>40VMHD L</b>	40 Degree	62 Degree	433 (17.0)	535 (21.1)	-- --	340 (13.4)						
<b>40VWHTO L</b>	40 Degree	62 Degree	433 (17.0)	535 (21.1)	-- --	340 (13.4)						
<b>50HMH S</b>	40 Degree	62 Degree	433 (17.0)	408 (16.1)	-- --	340 (13.4)						
<b>50HWHTO L</b>	40 Degree	65 Degree	418 (16.5)	537 (21.1)	180 (7.1)	340 (13.4)						
<b>60FETO, 70BETO L</b>	35 Degree	67 Degree	411 (16.2)	520 (20.5)	182 (7.2)	321 (12.6)						
<b>90AETO L</b>	30 Degree	67 Degree	457 (18.0)	520 (20.5)	187 (7.4)	331 (13.0)						
<b>90AETO X</b>	30 Degree	67 Degree	457 (18.0)	647 (25.5)	187 (7.4)	331 (13.0)						
<b>115C, 130B L</b>	35 Degree	70 Degree	463 (18.2)	515 (20.3)	291 (11.5)	409 (16.1)						
<b>115C, 130B, L130B X</b>	35 Degree	70 Degree	463 (18.2)	642 (25.3)	291 (11.5)	409 (16.1)						
<b>150F L</b>	35 Degree	70 Degree	587 (23.1)	516 (20.3)	290 (11.4)	406 (16.0)						
<b>150, 175, 200 X</b>	35 Degree	70 Degree	587 (23.1)	642 (25.3)	290 (11.4)	406 (16.0)						
<b>L150, L200 X</b>	35 Degree	70 Degree	587 (23.1)	642 (25.3)	290 (11.4)	406 (16.0)						
<b>Z150Q L</b>	32 Degree	70 Degree	574 (22.6)	516 (20.3)	277 (10.9)	396 (15.6)						
<b>Z200P L</b>	32 Degree	70 Degree	574 (22.6)	516 (20.3)	277 (10.9)	396 (15.6)						
<b>Z175G, Z200N, LZ200N X</b>	32 Degree	70 Degree	574 (22.6)	643 (25.3)	277 (10.9)	396 (15.6)						
<b>Z150P, LZ150P X</b>	32 Degree	70 Degree	574 (22.6)	643 (25.3)	277 (10.9)	396 (15.6)						
<b>225, L225 U</b>	35 Degree	70 Degree	631 (24.8)	768 (30.2)	281 (11.1)	420 (16.5)						
<b>225, L225 X</b>	35 Degree	70 Degree	631 (24.8)	642 (25.3)	281 (11.1)	420 (16.5)						
<b>Z250F L</b>	35 Degree	66 Degree	633 (24.9)	493 (19.4)	284 (11.2)	441 (17.4)						
<b>Z250D, LZ250D X</b>	30 Degree	67 Degree	633 (24.9)	640 (25.2)	284 (11.2)	420 (16.5)						
<b>Z300B L</b>	35 Degree	66 Degree	633 (24.9)	493 (19.4)	284 (11.2)	441 (17.4)						
<b>Z300AET, LZ300AET X</b>	30 Degree	67 Degree	633 (24.9)	640 (25.2)	284 (11.2)	420 (16.5)						
<b>25BMH S</b>	40 Degree	68 Degree	402 (15.8)	421 (16.6)	166 (6.5)	254 (10.0)						
<b>25BMH L</b>	40 Degree	68 Degree	402 (15.8)	548 (21.6)	166 (6.5)	254 (10.0)						
<b>25XMH S</b>	40 Degree	68 Degree	402 (15.8)	421 (16.6)	166 (6.5)	254 (10.0)						
<b>30HMH S</b>	40 Degree	68 Degree	402 (15.8)	421 (16.6)	166 (6.5)	254 (10.0)						
<b>30HMH L</b>	40 Degree	68 Degree	402 (15.8)	548 (21.6)	166 (6.5)	254 (10.0)						
<b>30HW L</b>	40 Degree	68 Degree	402 (15.8)	548 (21.6)	166 (6.5)	254 (10.0)						
<b>40XWT L</b>	45 Degree	61 Degree	391 (15.4)	550 (21.7)	182 (7.2)	369 (14.5)						
<b>60FET L</b>	35 Degree	67 Degree	411 (16.2)	520 (20.5)	182 (7.2)	321 (12.6)						
<b>75A, 85A L</b>	30 Degree	67 Degree	459 (18.1)	520 (20.5)	187 (7.4)	331 (13.0)						
<b>85AET X</b>	30 Degree	67 Degree	459 (18.1)	647 (25.5)	187 (7.4)	331 (13.0)						
<b>115CET L</b>	35 Degree	66 Degree	463 (18.2)	515 (20.3)	297 (11.7)	396 (15.6)						
<b>115CET X</b>	35 Degree	66 Degree	463 (18.2)	642 (25.3)	297 (11.7)	396 (15.6)						
<b>E40XMH L</b>	45 Degree	64 Degree	397 (15.6)	550 (21.7)	182 (7.2)	369 (14.5)						
<b>E60HMH L</b>	35 Degree	67 Degree	460 (18.1)	571 (22.5)	-- --	322 (12.7)						





## 2 STROKE MODELS

											mm (in)	
MODEL	G	H	I	J	K	L						
2C S	60 (2.4)	144 (5.7)	503 (19.8)	614 (24.2)	302 (11.9)	397 (15.6)						
3A S	60 (2.4)	136 (5.4)	621 (24.4)	654 (25.7)	343 (13.5)	419 (16.5)						
4AC, 5C S	60 (2.4)	136 (5.4)	623 (24.5)	653 (25.7)	358 (14.1)	459 (18.1)						
5C L	60 (2.4)	136 (5.4)	719 (28.3)	780 (30.7)	358 (14.1)	459 (18.1)						
6C, 8C S	60 (2.4)	164 (6.5)	668 (26.3)	682 (26.9)	295 (11.6)	470 (18.5)						
6C, 8C L	60 (2.4)	164 (6.5)	758 (29.8)	809 (31.9)	295 (11.6)	470 (18.5)						
9.9F, 15F S	56 (2.2)	161 (6.3)	572 (22.5)	705 (27.8)	335 (13.2)	526 (20.7)						
15F L	56 (2.2)	161 (6.3)	641 (25.2)	832 (32.8)	335 (13.2)	526 (20.7)						
20D, 25N S	65 (2.6)	174 (6.9)	586 (23.1)	703 (27.7)	365 (14.4)	584 (23.0)						
20D, 25N L	65 (2.6)	174 (6.9)	655 (25.8)	830 (32.7)	365 (14.4)	584 (23.0)						
30DETO L	-- --	338 (13.3)	651 (25.6)	835 (32.9)	426 (16.8)	661 (26.0)						
30DMH S	66 (2.6)	245 (9.6)	584 (23.0)	712 (28.0)	446 (17.6)	657 (25.9)						
30DMH L	66 (2.6)	245 (9.6)	648 (25.5)	833 (32.8)	446 (17.6)	657 (25.9)						
40VETO, 50HETO L	-- --	355 (14.0)	709 (27.9)	880 (34.6)	439 (17.3)	688 (27.1)						
40VMHD L	66 (2.6)	245 (9.6)	646 (25.4)	878 (34.6)	472 (18.6)	683 (26.9)						
40VWHTO L	66 (2.6)	245 (9.6)	646 (25.4)	878 (34.6)	472 (18.6)	683 (26.9)						
50HMH S	66 (2.6)	245 (9.6)	579 (22.8)	751 (29.6)	472 (18.6)	683 (26.9)						
50HWHTO L	-- --	355 (14.0)	709 (27.9)	880 (34.6)	470 (18.5)	696 (27.4)						
60FETO, 70BETO L	-- --	351 (13.8)	696 (27.4)	901 (35.5)	472 (18.6)	706 (27.8)						
90AETO L	-- --	351 (13.8)	698 (27.5)	901 (35.5)	512 (20.2)	730 (28.7)						
90AETO X	-- --	351 (13.8)	764 (30.1)	1028 (40.5)	512 (20.2)	730 (28.7)						
115C, 130B L	-- --	367 (14.4)	764 (30.1)	928 (36.5)	544 (21.4)	741 (29.2)						
115C, 130B, L130B X	-- --	367 (14.4)	839 (33.0)	1055 (41.5)	544 (21.4)	741 (29.2)						
150F L	-- --	367 (14.4)	773 (30.4)	946 (37.2)	670 (26.4)	791 (31.1)						
150, 175, 200 X	-- --	367 (14.4)	849 (33.4)	1072 (42.2)	670 (26.4)	791 (31.1)						
L150, L200 X	-- --	367 (14.4)	849 (33.4)	1072 (42.2)	670 (26.4)	791 (31.1)						
Z150Q L	-- --	367 (14.4)	774 (30.5)	947 (37.3)	746 (29.4)	945 (37.2)						
Z200P L	-- --	367 (14.4)	774 (30.5)	947 (37.3)	708 (27.9)	835 (32.9)						
Z175G, Z200N, LZ200N X	-- --	367 (14.4)	850 (33.4)	1074 (42.3)	708 (27.9)	835 (32.9)						
Z150P, LZ150P X	-- --	367 (14.4)	850 (33.4)	1074 (42.3)	708 (27.9)	835 (32.9)						
225, L225 U	-- --	411 (16.2)	923 (36.3)	1203 (47.4)	710 (28.0)	818 (32.2)						
225, L225 X	-- --	411 (16.2)	846 (33.3)	1077 (42.4)	710 (28.0)	818 (32.2)						
Z250F L	-- --	367 (14.4)	716 (28.2)	932 (36.7)	783 (30.8)	964 (38.0)						
Z250D, LZ250D X	-- --	411 (16.2)	848 (33.4)	1074 (42.3)	783 (30.8)	964 (38.0)						
Z300B L	-- --	367 (14.4)	716 (28.2)	932 (36.7)	783 (30.8)	964 (38.0)						
Z300AET, LZ300AET X	-- --	411 (16.2)	848 (33.4)	1074 (42.3)	783 (30.8)	964 (38.0)						
25BMH S	65 (2.6)	177 (7.0)	622 (24.5)	707 (27.8)	434 (17.1)	596 (23.5)						
25BMH L	65 (2.6)	177 (7.0)	697 (27.4)	834 (32.8)	434 (17.1)	596 (23.5)						
25XMH S	65 (2.6)	177 (7.0)	622 (24.5)	707 (27.8)	434 (17.1)	596 (23.5)						
30HMH S	65 (2.6)	177 (7.0)	622 (24.5)	707 (27.8)	434 (17.1)	596 (23.5)						
30HMH L	65 (2.6)	177 (7.0)	697 (27.4)	834 (32.8)	434 (17.1)	596 (23.5)						
30HW L	65 (2.6)	177 (7.0)	697 (27.4)	834 (32.8)	434 (17.1)	596 (23.5)						
40XWT L	-- --	338 (13.3)	637 (25.1)	893 (35.2)	471 (18.5)	706 (27.8)						
60FET L	-- --	351 (13.8)	696 (27.4)	901 (35.5)	472 (18.6)	706 (27.8)						
75A, 85A L	-- --	351 (13.8)	698 (27.5)	901 (35.5)	520 (20.5)	743 (29.3)						
85AET X	-- --	351 (13.8)	764 (30.1)	1028 (40.5)	520 (20.5)	743 (29.3)						
115CET L	-- --	350 (13.8)	764 (30.1)	929 (36.6)	544 (21.4)	741 (29.2)						
115CET X	-- --	350 (13.8)	764 (30.1)	1055 (41.5)	544 (21.4)	741 (29.2)						
E40XMH L	69 (2.7)	218 (8.6)	697 (27.4)	893 (35.2)	471 (18.5)	702 (27.6)						
E60HMH L	63 (2.5)	351 (13.8)	722 (28.4)	952 (37.5)	528 (20.8)	724 (28.5)						

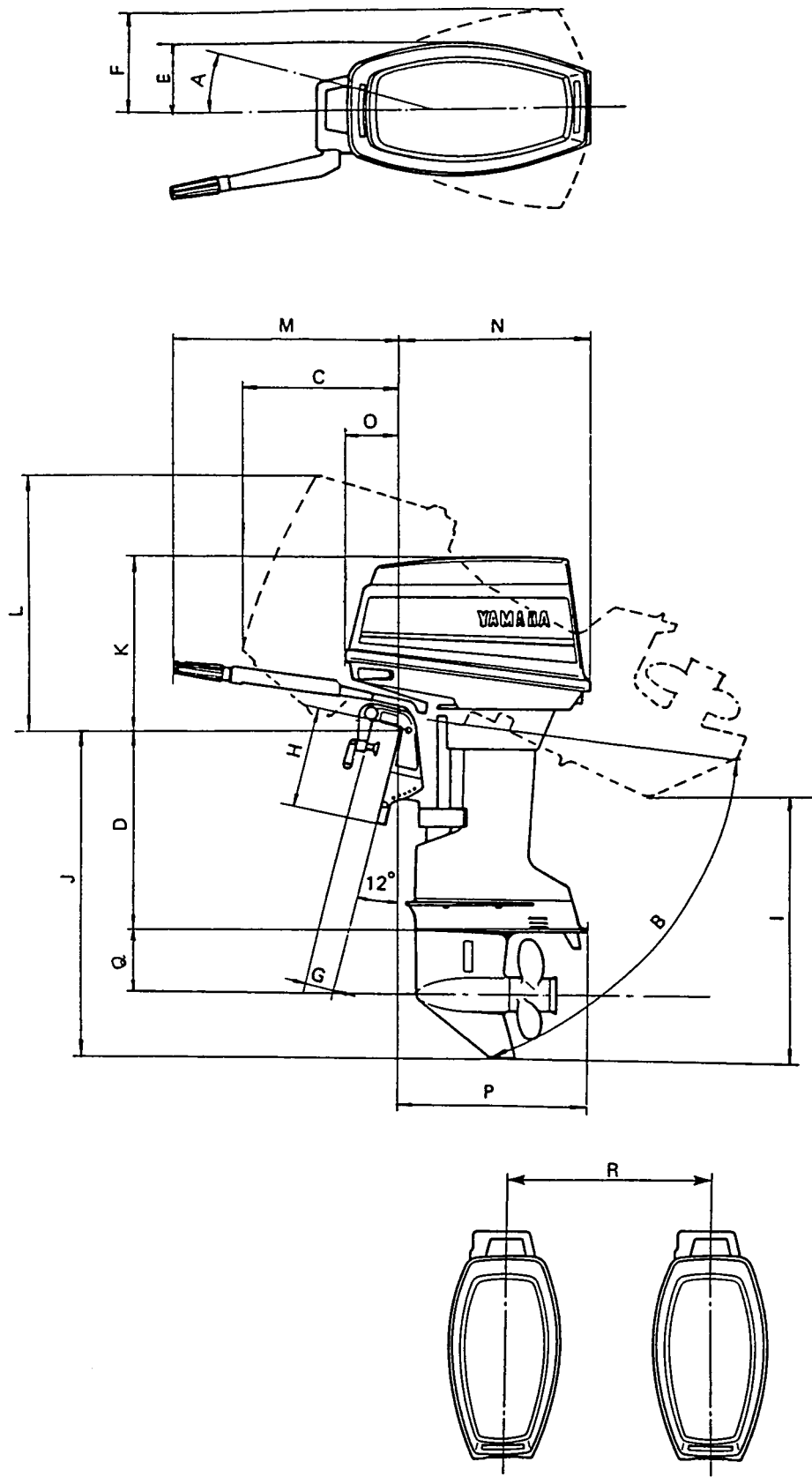






## 2 STROKE MODELS

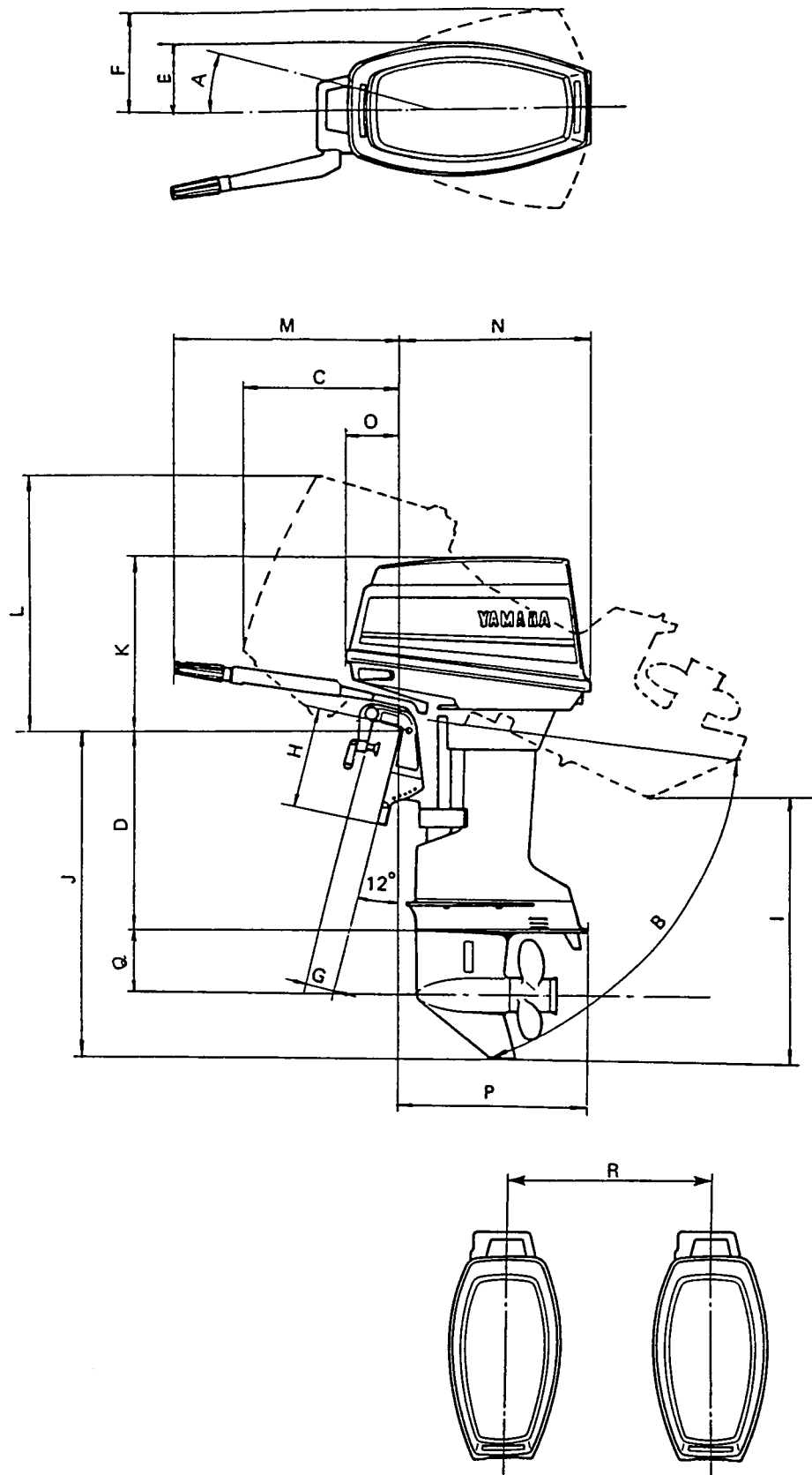
								mm	(in)
MODEL	M	N	O	P	Q	R			
2C S	331 (13.0)	276 (10.9)	122 (4.8)	164 (6.5)	100 (3.9)	--	--		
3A S	317 (12.5)	311 (12.2)	107 (4.2)	223 (8.8)	103 (4.1)	--	--		
4AC, 5C S	333 (13.1)	344 (13.5)	145 (5.7)	252 (9.9)	105 (4.1)	--	--		
5C L	333 (13.1)	344 (13.5)	145 (5.7)	252 (9.9)	105 (4.1)	--	--		
6C, 8C S	439 (17.3)	363 (14.3)	114 (4.5)	359 (14.1)	123 (4.8)	--	--		
6C, 8C L	439 (17.3)	363 (14.3)	114 (4.5)	359 (14.1)	123 (4.8)	--	--		
9.9F, 15F S	479 (18.9)	393 (15.5)	180 (7.1)	355 (14.0)	135 (5.3)	--	--		
15F L	479 (18.9)	393 (15.5)	180 (7.1)	355 (14.0)	135 (5.3)	--	--		
20D, 25N S	508 (20.0)	428 (16.9)	185 (7.3)	402 (15.8)	144 (5.7)	--	--		
20D, 25N L	508 (20.0)	428 (16.9)	185 (7.3)	402 (15.8)	144 (5.7)	--	--		
30DETO L	--	489 (19.3)	89 (3.5)	520 (20.5)	148 (5.8)	--	--		
30DMH S	497 (19.6)	465 (18.3)	198 (7.8)	496 (19.5)	148 (5.8)	--	--		
30DMH L	497 (19.6)	465 (18.3)	198 (7.8)	496 (19.5)	148 (5.8)	--	--		
40VETO, 50HETO L	--	528 (20.8)	142 (5.6)	529 (20.8)	175 (6.9)	--	--		
40VMHD L	789 (31.1)	490 (19.3)	257 (10.1)	493 (19.4)	175 (6.9)	--	--		
40VWHTO L	789 (31.1)	490 (19.3)	257 (10.1)	493 (19.4)	175 (6.9)	--	--		
50HMH S	789 (31.1)	490 (19.3)	257 (10.1)	493 (19.4)	175 (6.9)	--	--		
50HWHTO L	753 (29.6)	528 (20.8)	221 (8.7)	529 (20.8)	175 (6.9)	--	--		
60FETO, 70BETO L	--	532 (20.9)	166 (6.5)	547 (21.5)	191 (7.5)	600	(23.6)		
90AETO L	--	545 (21.5)	180 (7.1)	547 (21.5)	191 (7.5)	600	(23.6)		
90AETO X	--	545 (21.5)	180 (7.1)	547 (21.5)	191 (7.5)	600	(23.6)		
115C, 130B L	--	554 (21.8)	176 (6.9)	632 (24.9)	191 (7.5)	660	(26.0)		
115C, 130B, L130B X	--	554 (21.8)	176 (6.9)	632 (24.9)	191 (7.5)	660	(26.0)		
150F L	--	550 (21.7)	179 (7.0)	647 (25.5)	210 (8.3)	660	(26.0)		
150, 175, 200 X	--	550 (21.7)	179 (7.0)	647 (25.5)	210 (8.3)	660	(26.0)		
L150, L200 X	--	550 (21.7)	179 (7.0)	647 (25.5)	210 (8.3)	660	(26.0)		
Z150Q L	--	613 (24.1)	180 (7.1)	646 (25.4)	211 (8.3)	660	(26.0)		
Z200P L	--	613 (24.1)	180 (7.1)	646 (25.4)	211 (8.3)	660	(26.0)		
Z175G, Z200N, LZ200N X	--	613 (24.1)	180 (7.1)	646 (25.4)	211 (8.3)	660	(26.0)		
Z150P, LZ150P X	--	613 (24.1)	180 (7.1)	646 (25.4)	211 (8.3)	660	(26.0)		
225, L225 U	--	566 (22.3)	181 (7.1)	673 (26.5)	216 (8.5)	660	(26.0)		
225, L225 X	--	566 (22.3)	181 (7.1)	673 (26.5)	216 (8.5)	660	(26.0)		
Z250F L	--	663 (26.1)	202 (8.0)	715 (28.1)	216 (8.5)	--	--		
Z250D, LZ250D X	--	663 (26.1)	202 (8.0)	677 (26.7)	216 (8.5)	660	(26.0)		
Z300B L	--	663 (26.1)	202 (8.0)	715 (28.1)	216 (8.5)	--	--		
Z300AET, LZ300AET X	--	663 (26.1)	202 (8.0)	677 (26.7)	216 (8.5)	660	(26.0)		
25BMH S	420 (16.5)	429 (16.9)	179 (7.0)	385 (15.2)	144 (5.7)	--	--		
25BMH L	420 (16.5)	429 (16.9)	179 (7.0)	385 (15.2)	144 (5.7)	--	--		
25XMH S	420 (16.5)	429 (16.9)	179 (7.0)	385 (15.2)	144 (5.7)	--	--		
30HMH S	420 (16.5)	429 (16.9)	179 (7.0)	385 (15.2)	144 (5.7)	--	--		
30HMH L	420 (16.5)	429 (16.9)	179 (7.0)	385 (15.2)	144 (5.7)	--	--		
30HW L		429 (16.9)	179 (7.0)	385 (15.2)	144 (5.7)	--	--		
40XWT L	--	553 (21.8)	118 (4.6)	522 (20.6)	175 (6.9)	--	--		
60FET L	--	532 (20.9)	166 (6.5)	547 (21.5)	191 (7.5)	600	(23.6)		
75A, 85A L	--	545 (21.5)	180 (7.1)	547 (21.5)	191 (7.5)	600	(23.6)		
85AET X	--	545 (21.5)	180 (7.1)	547 (21.5)	191 (7.5)	600	(23.6)		
115CET L	--	554 (21.8)	176 (6.9)	632 (24.9)	191 (7.5)	660	(26.0)		
115CET X	--	554 (21.8)	176 (6.9)	632 (24.9)	191 (7.5)	660	(26.0)		
E40XMH L	523 (20.6)	553 (21.8)	190 (7.5)	522 (20.6)	175 (6.9)	--	--		
E60HMH L	651 (25.6)	532 (20.9)	269 (10.6)	546 (21.5)	191 (7.5)	600	(23.6)		





## 4 STROKE MODELS

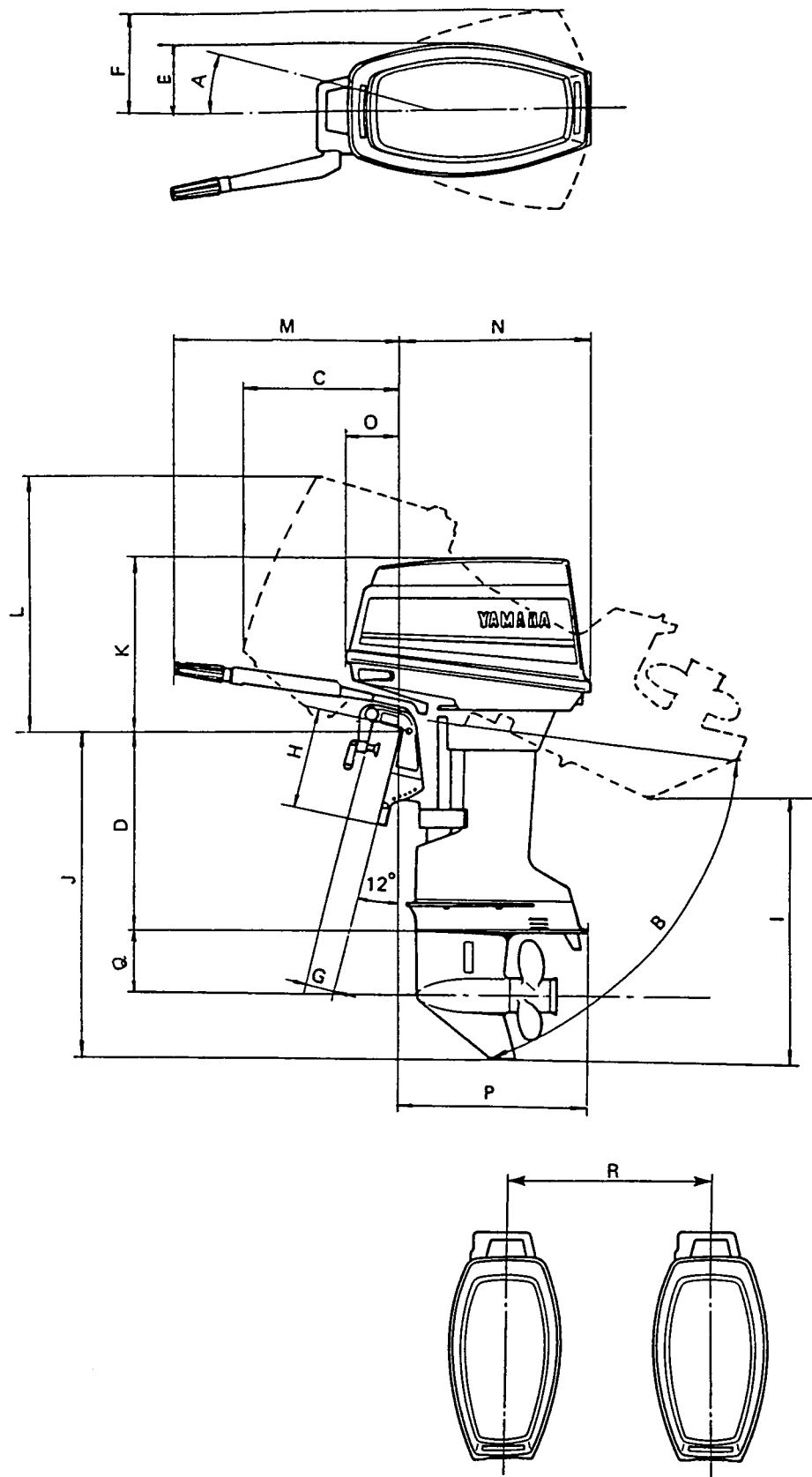
											mm	(in)
MODEL	A	B	C	D	E	F						
<b>F2.5AHM</b> S	360 Degree	80 Degree	366 (14.4)	432 (17.0)	139 (5.5)	--	--	--	--	--	--	--
<b>F2.AHM</b> L	360 Degree	80 Degree	366 (14.4)	559 (22.0)	139 (5.5)	--	--	--	--	--	--	--
<b>F4A</b> S	360 Degree	69 Degree	373 (14.7)	435 (17.1)	137 (5.4)	--	--	--	--	--	--	--
<b>F4A</b> L	360 Degree	69 Degree	373 (14.7)	562 (22.1)	137 (5.4)	--	--	--	--	--	--	--
<b>F8C</b> S	45 Degree	66 Degree	271 (10.7)	435 (17.1)	159 (6.3)	286	(11.3)					
<b>F8C</b> L	45 Degree	66 Degree	271 (10.7)	562 (22.1)	159 (6.3)	286	(11.3)					
<b>FT8DMH</b> L	45 Degree	66 Degree	271 (10.7)	557 (21.9)	159 (6.3)	286	(11.3)					
<b>FT8DEP</b> L	40 Degree	66 Degree	271 (10.7)	557 (21.9)	159 (6.3)	271	(10.7)					
<b>FT8DEP</b> X	40 Degree	66 Degree	271 (10.7)	625 (24.6)	159 (6.3)	271	(10.7)					
<b>FT9.9DE</b> L	45+40 Degree	63 Degree	317 (12.5)	567 (22.3)	182 (7.2)	350	(13.8)					
<b>FT9.9DE</b> X	45+40 Degree	63 Degree	317 (12.5)	635 (25.0)	182 (7.2)	350	(13.8)					
<b>F15ESH</b> S	45+40 Degree	63 Degree	317 (12.5)	440 (17.3)	183 (7.2)	350	(13.8)					
<b>F15ELH</b> L	45+40 Degree	63 Degree	317 (12.5)	568 (22.4)	183 (7.2)	350	(13.8)					
<b>F15AMH</b> S	45+40 Degree	63 Degree	331 (13.0)	440 (17.3)	183 (7.2)	350	(13.8)					
<b>F15AMH</b> L	45+40 Degree	63 Degree	331 (13.0)	568 (22.4)	183 (7.2)	350	(13.8)					
<b>F25AET</b> L	45 Degree	61 Degree	329 (12.9)	550 (21.6)	185 (7.3)	400	(15.8)					
<b>F25AET</b> L	45 Degree	64 Degree	343 (13.5)	550 (21.6)	185 (7.3)	400	(15.8)					
<b>F25AMH</b> S	45 Degree	64 Degree	363 (14.3)	423 (16.6)	185 (7.3)	400	(15.8)					
<b>F25AMH</b> L	45 Degree	64 Degree	363 (14.3)	550 (21.6)	185 (7.3)	400	(15.8)					
<b>FT25BET</b> X	40 Degree	62 Degree	334 (13.1)	642 (25.3)	185 (7.3)	376	(14.8)					
<b>F30AET, F40BET</b> L	40 Degree	62 Degree	384 (15.1)	533 (21.0)	189 (7.4)	313	(12.3)					
<b>F40BWHD</b> L	40 Degree	62 Degree	384 (15.1)	533 (21.0)	189 (7.4)	313	(12.3)					
<b>F40BWHT</b> L	40 Degree	62 Degree	353 (13.9)	533 (21.0)	189 (7.4)	313	(12.3)					
<b>F50AET</b> L	40 Degree	65 Degree	409 (16.1)	533 (21.0)	181 (7.1)	345	(13.6)					
<b>F50AET</b> L	40 Degree	65 Degree	409 (16.1)	533 (21.0)	181 (7.1)	345	(13.6)					
<b>F50FET</b> L	40 Degree	63 Degree	417 (16.4)	527 (20.7)	192 (7.6)	360	(14.2)					
<b>F50FEHT</b> L	40 Degree	65 Degree	417 (16.4)	527 (20.7)	192 (7.6)	360	(14.2)					
<b>FT50BET</b> L	40 Degree	65 Degree	409 (16.1)	534 (21.0)	181 (7.1)	346	(13.6)					
<b>FT50BET</b> X	40 Degree	65 Degree	409 (16.1)	645 (25.4)	181 (7.1)	346	(13.6)					
<b>F60AET</b> L	40 Degree	69 Degree	417 (16.4)	527 (20.7)	192 (7.6)	360	(14.2)					
<b>F60AET, F60BET</b> L	40 Degree	69 Degree	417 (16.4)	527 (20.7)	192 (7.6)	360	(14.2)					
<b>F60BET</b> X	40 Degree	69 Degree	417 (16.4)	641 (25.2)	192 (7.6)	360	(14.2)					
<b>F60CEHT</b> L	40 Degree	65 Degree	417 (16.4)	527 (20.7)	192 (7.6)	360	(14.2)					
<b>F60CET</b> L	40 Degree	63 Degree	417 (16.4)	527 (20.7)	192 (7.6)	360	(14.2)					
<b>FT60DET</b> L	40 Degree	65 Degree	417 (16.4)	530 (20.9)	192 (7.6)	360	(14.2)					
<b>FT60DET</b> X	40 Degree	65 Degree	417 (16.4)	644 (25.3)	192 (7.6)	360	(14.2)					
<b>F80A, F100A</b> L	35 Degree	70 Degree	528 (20.8)	537 (21.1)	240 (9.4)	405	(15.9)					
<b>F80A, F100A</b> X	35 Degree	70 Degree	528 (20.8)	664 (26.1)	240 (9.4)	405	(15.9)					
<b>F80BET</b> L	35 Degree	70 Degree	527 (20.7)	536 (21.1)	240 (9.4)	405	(15.9)					
<b>F80BET</b> X	35 Degree	70 Degree	527 (20.7)	663 (26.1)	240 (9.4)	405	(15.9)					
<b>F100DET</b> L	35 Degree	70 Degree	527 (20.7)	536 (21.1)	240 (9.4)	405	(15.9)					
<b>F100DET</b> X	35 Degree	70 Degree	527 (20.7)	663 (26.1)	240 (9.4)	405	(15.9)					
<b>F115A</b> L	30 Degree	70 Degree	555 (21.9)	515 (20.3)	249 (9.8)	391	(15.4)					
<b>F115A, LF115A</b> X	30 Degree	70 Degree	555 (21.9)	643 (25.3)	249 (9.8)	391	(15.4)					
<b>F150AET</b> L	35 Degree	66 Degree	629 (24.8)	516 (20.3)	256 (10.1)	433	(17.1)					
<b>F150AET</b> X	35 Degree	66 Degree	629 (24.8)	643 (25.3)	256 (10.1)	433	(17.1)					
<b>FL150AET</b> X	35 Degree	66 Degree	629 (24.8)	643 (25.3)	256 (10.1)	433	(17.1)					
<b>F200A, FL200A</b> X	32 Degree	70 Degree	618 (24.3)	643 (25.3)	317 (12.5)	453	(17.8)					
<b>F225A, FL225A</b> X	32 Degree	70 Degree	618 (24.3)	643 (25.3)	317 (12.5)	453	(17.8)					
<b>F225A, FL225A</b> U	32 Degree	70 Degree	618 (24.3)	770 (30.3)	317 (12.5)	453	(17.8)					





## 4 STROKE MODELS

											mm	(in)	
MODEL		G		H		I		J		K		L	
F2.5AHM	S	58	(2.3)	144	(5.6)	642	(25.3)	645	(25.4)	376	(14.8)	406	(16.0)
F2.AHM	L	58	(2.3)	144	(5.6)	746	(29.4)	772	(30.4)	376	(14.8)	406	(16.0)
F4A	S	58	(2.3)	136	(5.4)	555	(21.9)	644	(25.4)	350	(14.0)	513	(20.2)
F4A	L	58	(2.3)	136	(5.4)	637	(25.1)	771	(30.4)	350	(14.0)	513	(20.2)
F8C	S	65	(2.6)	190	(7.5)	593	(23.3)	682	(26.9)	318	(12.5)	529	(20.8)
F8C	L	65	(2.6)	190	(7.5)	546	(21.5)	809	(31.9)	318	(12.5)	529	(20.8)
FT8DMH	L	65	(2.6)	190	(7.5)	717	(28.2)	869	(34.2)	318	(12.5)	529	(20.8)
FT8DEP	L	65	(2.6)	325	(12.8)	717	(28.2)	869	(34.2)	318	(12.5)	529	(20.8)
FT8DEP	X	65	(2.6)	325	(12.8)	757	(29.8)	937	(36.9)	318	(12.5)	529	(20.8)
FT9.9DE	L	56	(2.2)	164	(6.5)	682	(26.9)	879	(34.6)	375	(14.8)	589	(23.2)
FT9.9DE	X	56	(2.2)	164	(6.5)	720	(28.3)	947	(37.3)	375	(14.8)	589	(23.2)
F15ESH	S	56	(2.2)	164	(6.5)	572	(22.5)	706	(27.8)	375	(14.8)	589	(23.2)
F15ELH	L	56	(2.2)	164	(6.5)	641	(25.2)	833	(32.8)	375	(14.8)	589	(23.2)
F15AMH	S	56	(2.2)	164	(6.5)	572	(22.5)	706	(27.8)	375	(14.8)	589	(23.2)
F15AMH	L	56	(2.2)	164	(6.5)	641	(25.2)	833	(32.8)	375	(14.8)	589	(23.2)
F25AET	L	69	(2.7)	338	(13.3)	648	(25.5)	834	(32.8)	441	(17.4)	698	(27.5)
F25AET	L	69	(2.7)	218	(8.6)	686	(27.0)	834	(32.8)	441	(17.4)	698	(27.5)
F25AMH	S	69	(2.7)	218	(8.6)	615	(24.2)	707	(27.8)	441	(17.4)	698	(27.5)
F25AMH	L	69	(2.7)	218	(8.6)	686	(27.0)	834	(32.8)	441	(17.4)	698	(27.5)
FT25BET	X	69	(2.7)	338	(13.3)	724	(28.5)	985	(38.8)	440	(17.3)	698	(27.5)
F30AET, F40BET	L	69	(2.7)	338	(13.3)	671	(26.4)	876	(34.5)	493	(19.4)	727	(28.6)
F40BWHD	L	69	(2.7)	338	(13.3)	671	(26.4)	876	(34.5)	493	(19.4)	727	(28.6)
F40BWHT	L	69	(2.7)	338	(13.3)	666	(26.2)	876	(34.5)	463	(18.2)	708	(27.9)
F50AET	L	--	--	355	(14.0)	711	(28.0)	876	(34.5)	521	(20.5)	734	(28.9)
F50AET	L	--	--	355	(14.0)	711	(28.0)	876	(34.5)	521	(20.5)	734	(28.9)
F50FET	L	69	(2.7)	350	(14.0)	708	(27.9)	870	(34.2)	545	(21.5)	759	(29.9)
F50FEHT	L	69	(2.7)	350	(14.0)	708	(27.9)	870	(34.2)	545	(21.5)	759	(29.9)
FT50BET	L	--	--	355	(14.0)	750	(29.5)	917	(36.1)	521	(20.5)	735	(28.9)
FT50BET	X	--	--	355	(14.0)	813	(32.0)	1026	(40.4)	521	(20.5)	735	(28.9)
F60AET	L	--	--	350	(13.8)	708	(27.9)	870	(34.3)	545	(21.5)	759	(29.9)
F60AET, F60BET	L	--	--	350	(13.8)	708	(27.9)	870	(34.3)	545	(21.5)	759	(29.9)
F60BET	X	--	--	350	(13.8)	774	(30.5)	984	(38.8)	545	(21.5)	759	(29.9)
F60CEHT	L	69	(2.7)	350	(14.0)	708	(27.9)	870	(34.2)	545	(21.5)	759	(29.9)
F60CET	L	69	(2.7)	350	(14.0)	708	(27.9)	870	(34.2)	545	(21.5)	759	(29.9)
FT60DET	L	69	(2.7)	350	(14.0)	746	(29.4)	910	(35.8)	545	(21.5)	759	(29.9)
FT60DET	X	69	(2.7)	350	(14.0)	812	(40.0)	1024	(40.3)	545	(21.5)	759	(29.9)
F80A, F100A	L	80	(3.1)	347	(13.7)	767	(30.2)	917	(36.1)	666	(26.2)	856	(33.7)
F80A, F100A	X	80	(3.1)	347	(13.7)	844	(33.2)	1044	(41.1)	666	(26.2)	856	(33.7)
F80BET	L	80	(3.1)	367	(14.4)	766	(30.2)	917	(36.1)	666	(26.2)	857	(33.7)
F80BET	X	80	(3.1)	367	(14.4)	842	(33.1)	1044	(41.1)	666	(26.2)	857	(33.7)
F100DET	L	80	(3.1)	367	(14.4)	766	(30.2)	917	(36.1)	666	(26.2)	857	(33.7)
F100DET	X	80	(3.1)	367	(14.4)	842	(33.1)	1044	(41.1)	666	(26.2)	857	(33.7)
F115A	L	--	--	367	(14.4)	774	(30.5)	928	(36.5)	680	(26.8)	879	(34.6)
F115A, LF115A	X	--	--	367	(14.4)	850	(33.5)	1055	(41.5)	680	(26.8)	879	(34.6)
F150AET	L	--	--	367	(14.4)	787	(31.0)	946	(37.2)	769	(31.3)	915	(36.2)
F150AET	X	--	--	367	(14.4)	864	(34.0)	1073	(42.2)	769	(31.3)	915	(36.2)
FL150AET	X	--	--	367	(14.4)	864	(34.0)	1073	(42.2)	769	(31.3)	915	(36.2)
F200A, FL200A	X	--	--	411	(16.2)	847	(33.3)	1078	(42.4)	727	(28.6)	880	(34.6)
F225A, FL225A	X	--	--	411	(16.2)	847	(33.3)	1078	(42.4)	727	(28.6)	880	(34.6)
F225A, FL225A	U	--	--	411	(16.2)	924	(36.4)	1205	(47.4)		(28.6)	880	(34.6)





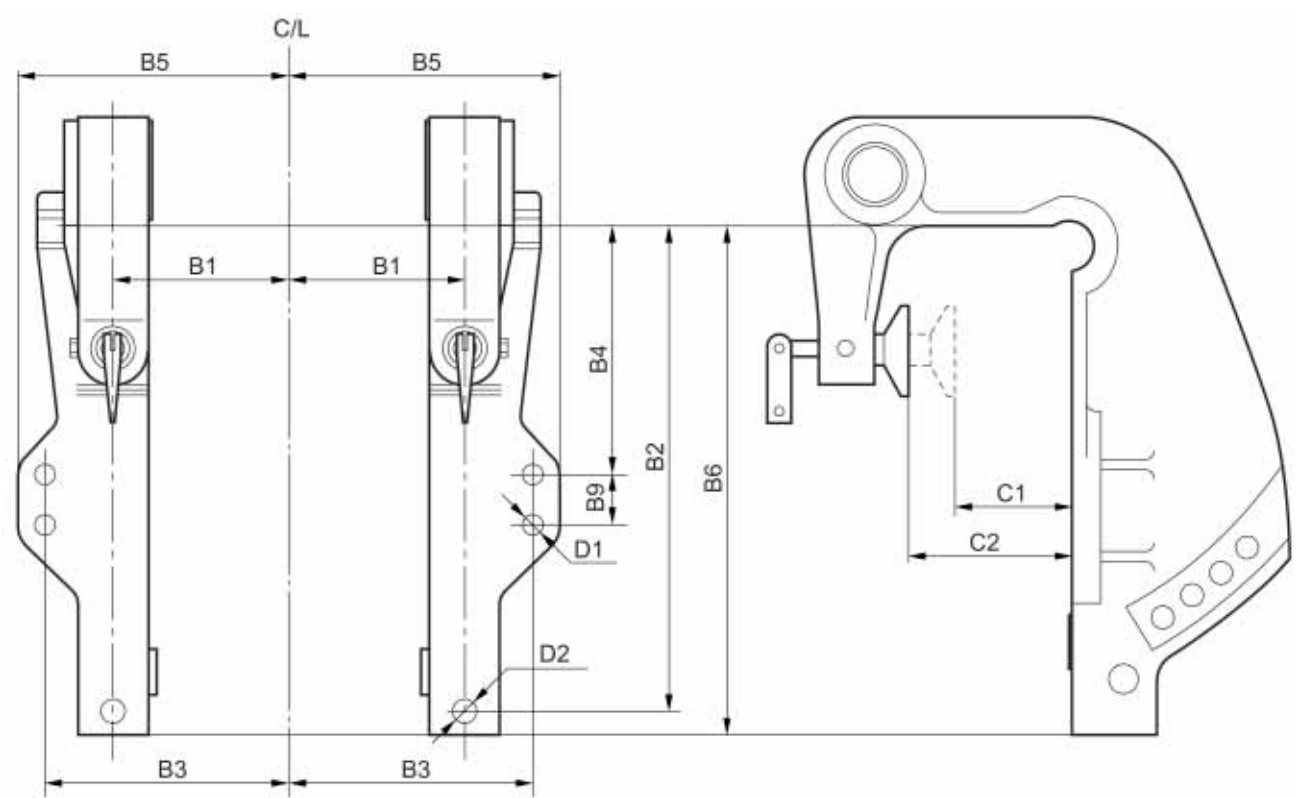
## 4 STROKE MODELS

										mm	(in)
MODEL	M	N	O	P	Q	R					
F2.5AHM S	309 (12.2)	315 (12.4)	93 (3.7)	215 (8.5)	103 (4.1)	--	--				
F2.AHM L	309 (12.2)	315 (12.4)	93 (3.7)	215 (8.5)	103 (4.1)	--	--				
F4A S	342 (13.5)	375 (14.8)	141 (5.6)	259 (10.2)	104 (4.1)	--	--				
F4A L	342 (13.5)	375 (14.8)	141 (5.6)	259 (10.2)	104 (4.1)	--	--				
F8C S	608 (23.9)	430 (16.9)	122 (4.8)	355 (14.0)	123 (4.8)	--	--				
F8C L	608 (23.9)	430 (16.9)	122 (4.8)	355 (14.0)	123 (4.8)	--	--				
FT8DMH L	608 (23.9)	430 (16.9)	122 (4.8)	367 (14.4)	157 (6.2)	--	--				
FT8DEP L	-- --	430 (16.9)	122 (4.8)	367 (14.4)	157 (6.2)	--	--				
FT8DEP X	-- --	430 (16.9)	122 (4.8)	367 (14.4)	157 (6.2)	--	--				
FT9.9DE L	-- --	475 (18.7)	160 (6.3)	356 (14.0)	157 (6.2)	--	--				
FT9.9DE X	-- --	475 (18.7)	160 (6.3)	356 (14.0)	157 (6.2)	--	--				
F15ESH S	526 (20.7)	475 (18.7)	168 (6.6)	356 (14.0)	135 (5.3)	--	--				
F15ELH L	526 (20.7)	475 (18.7)	168 (6.6)	356 (14.0)	135 (5.3)	--	--				
F15AMH S	526 (20.7)	475 (18.7)	168 (6.6)	356 (14.0)	135 (5.3)	--	--				
F15AMH L	526 (20.7)	475 (18.7)	168 (6.6)	356 (14.0)	135 (5.3)	--	--				
F25AET L	-- --	580 (22.8)	123 (4.8)	432 (17.0)	144 (5.7)	--	--				
F25AET L	572 (22.5)	580 (22.8)	190 (7.5)	432 (17.0)	144 (5.7)	--	--				
F25AMH S	572 (22.5)	580 (22.8)	190 (7.5)	432 (17.0)	144 (5.7)	--	--				
F25AMH L	572 (22.5)	580 (22.8)	190 (7.5)	432 (17.0)	144 (5.7)	--	--				
FT25BET X	-- --	580 (22.8)	64 (2.5)	521 (20.5)	175 (6.9)	--	--				
F30AET, F40BET L	-- --	569 (22.4)	65 (2.6)	521 (20.5)	175 (6.9)	--	--				
F40BWHD L	763 (30.0)	569 (22.4)	234 (9.2)	521 (20.5)	175 (6.9)	--	--				
F40BWHT L	763 (30.0)	569 (22.4)	234 (9.2)	521 (20.5)	175 (6.9)	--	--				
F50AET L	-- --	576 (22.7)	142 (5.6)	532 (21.0)	175 (6.9)	--	--				
F50FET L	-- --	584 (23.0)	147 (5.8)	533 (21.0)	175 (6.9)	--	--				
F50FEHT L	755 (29.7)	584 (23.0)	164 (6.5)	533 (21.0)	175 (6.9)	--	--				
FT50BET L	-- --	576 (22.7)	142 (5.6)	561 (22.1)	194 (7.6)	--	--				
FT50BET X	-- --	576 (22.7)	142 (5.6)	561 (22.1)	194 (7.6)	--	--				
F60AET L	-- --	584 (23.0)	147 (5.8)	533 (21.0)	175 (6.9)	--	--				
F60AET, F60BET L	755 (29.7)	584 (23.0)	147 (5.8)	533 (21.0)	175 (6.9)	--	--				
F60BET X	755 (29.7)	584 (23.0)	147 (5.8)	533 (21.0)	175 (6.9)	--	--				
F60CEHT L	755 (29.7)	584 (23.0)	164 (6.5)	533 (21.0)	175 (6.9)	--	--				
F60CET L	-- --	584 (23.0)	147 (5.8)	533 (21.0)	175 (6.9)	--	--				
FT60DET L	-- --	584 (23.0)	147 (5.8)	561 (22.1)	191 (7.5)	--	--				
FT60DET X	-- --	584 (23.0)	147 (5.8)	561 (22.1)	191 (7.5)	--	--				
F80A, F100A L	-- --	651 (25.6)	171 (6.7)	574 (22.6)	191 (7.5)	660 (26.0)					
F80A, F100A X	-- --	651 (25.6)	171 (6.7)	574 (22.6)	191 (7.5)	660 (26.0)					
F80BET L	-- --	651 (25.6)	164 (6.5)	574 (22.6)	191 (7.5)	660 (26.0)					
F80BET X	-- --	651 (25.6)	164 (6.5)	574 (22.6)	191 (7.5)	660 (26.0)					
F100DET L	-- --	651 (25.6)	164 (6.5)	574 (22.6)	191 (7.5)	660 (26.0)					
F100DET X	-- --	651 (25.6)	164 (6.5)	574 (22.6)	191 (7.5)	660 (26.0)					
F115A L	-- --	665 (26.2)	160 (6.3)	631 (24.8)	191 (7.5)	660 (26.0)					
F115A, LF115A X	-- --	665 (26.2)	160 (6.3)	631 (24.8)	191 (7.5)	660 (26.0)					
F150AET L	-- --	698 (27.5)	164 (6.5)	646 (25.4)	210 (8.3)	660 (26.0)					
F150AET X	-- --	698 (27.5)	164 (6.5)	646 (25.4)	210 (8.3)	660 (26.0)					
FL150AET X	-- --	698 (27.5)	164 (6.5)	646 (25.4)	210 (8.3)	660 (26.0)					
F200A, FL200A X	-- --	651 (25.6)	230 (9.1)	673 (26.5)	216 (8.5)	724 (28.5)					
F225A, FL225A X	-- --	651 (25.6)	230 (9.1)	673 (26.5)	216 (8.5)	724 (28.5)					
F225A, FL225A U	-- --	651 (25.6)	230 (9.1)	673 (26.5)	216 (8.5)	724 (28.5)					



**OUTBOARD MOTOR DIMENSIONS**  
**CLAMP BRACKET DIMENSIONS**

Model	F8C
	Manual tilt

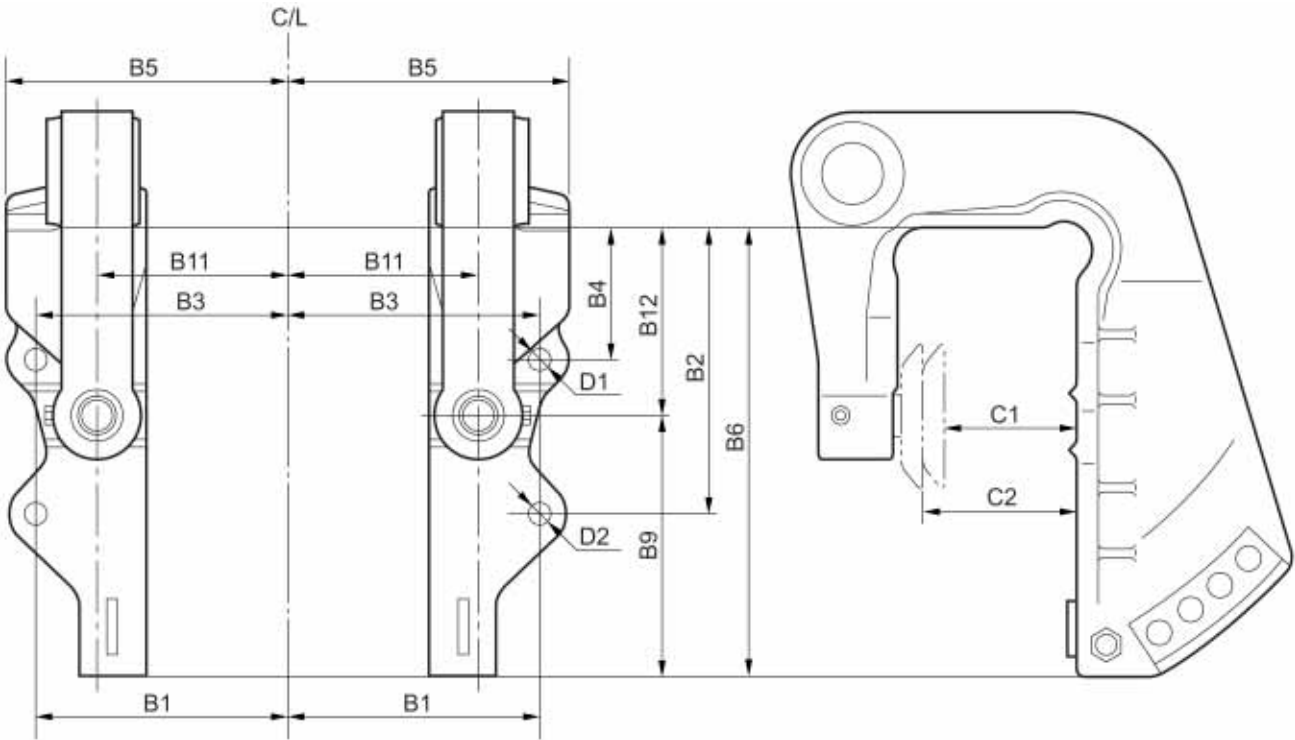


Symbol	mm (in)	Symbol	mm (in)
B1	70.5 (2.8)	C1	28 (1.1)
B2	180.5 (7.1)	C2	65 (2.6)
B3	95.3 (3.8)	C3	—
B4	94.5 (3.7)	D1	8.3 (0.3)
B5	105.3 (4.2)	D2	8.3 (0.3)
B6	189.5 (7.4)	D3	—
B7	—	D4	—
B8	—		
B9	18.5 (0.7)		
B10	—		
B11	—		
B12	—		



**OUTBOARD MOTOR DIMENSIONS**  
**CLAMP BRACKET DIMENSIONS**

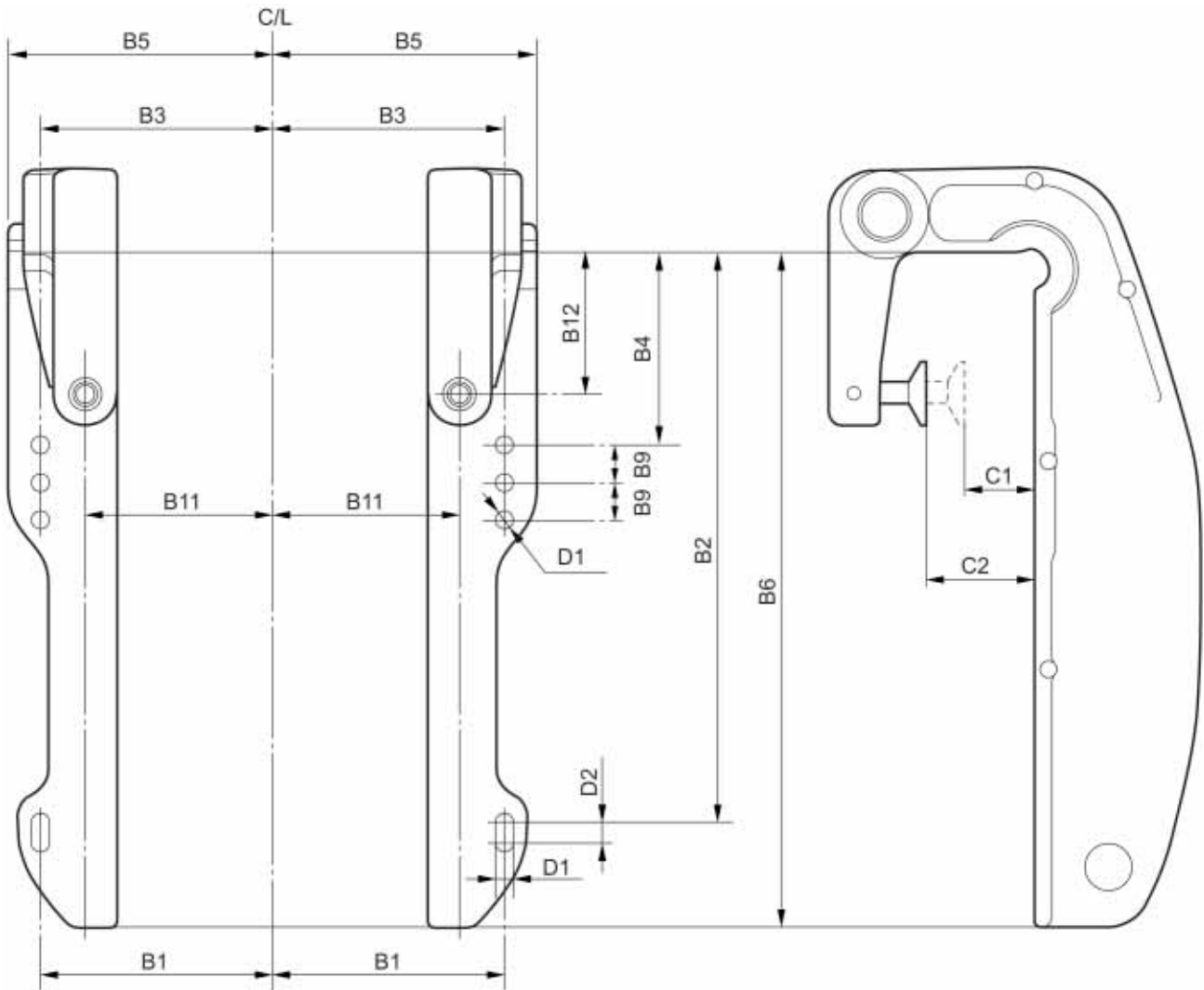
Model	9.9F, 15F, F15A, FT9.9D
	Manual tilt



Symbol	mm (in)	Symbol	mm (in)
B1	92.5 (3.6)	C1	30 (1.2)
B2	103.5 (4.1)	C2	56 (2.2)
B3	92.5 (3.6)	C3	—
B4	49 (1.9)	D1	8.3 (0.3)
B5	102.5 (4.0)	D2	8.3 (0.3)
B6	176 (6.9)	D3	—
B7	—	D4	—
B8	—		
B9	54.5 (2.1)		
B10	—		
B11	70.5 (2.8)		
B12	69 (2.7)		

**OUTBOARD MOTOR DIMENSIONS**  
**CLAMP BRACKET DIMENSIONS**

Model	F15A, F15E, FT9.9D, FT8D
	Power tilt

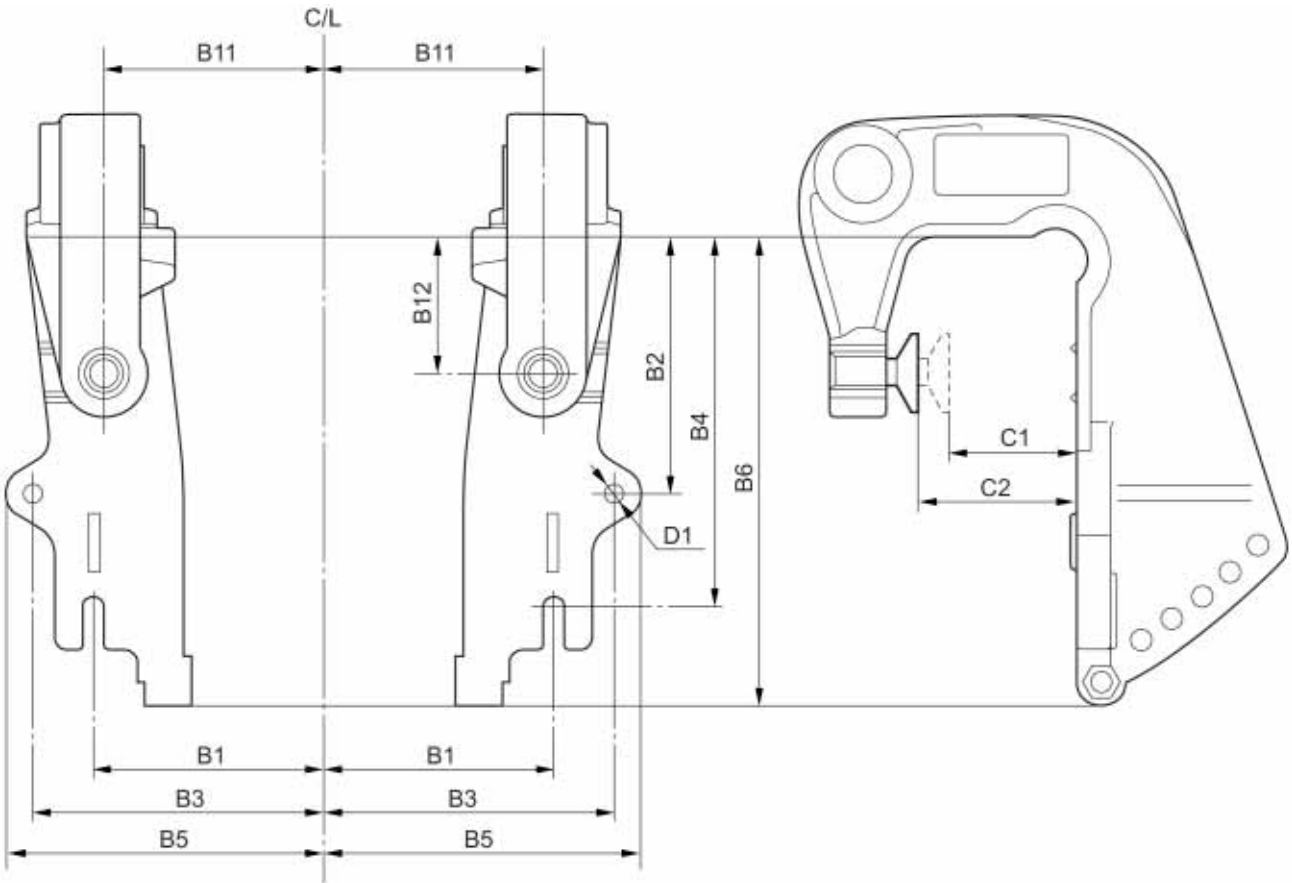


Symbol	mm (in)	Symbol	mm (in)
B1	95.3 (3.8)	C1	30 (1.2)
B2	275.5 (10.8)	C2	56 (2.2)
B3	95.3 (3.8)	C3	—
B4	94.5 (3.7)	D1	8.3 (0.3)
B5	111 (4.4)	D2	10 (0.4)
B6	325.5 (12.8)	D3	—
B7	155.5 (6.1)	D4	—
B8	—		
B9	18 (0.7)		
B10	—		
B11	73.5 (2.9)		
B12	69.5 (2.7)		



**OUTBOARD MOTOR DIMENSIONS**  
**CLAMP BRACKET DIMENSIONS**

Model	25B, 25X, 30H
	Manual tilt

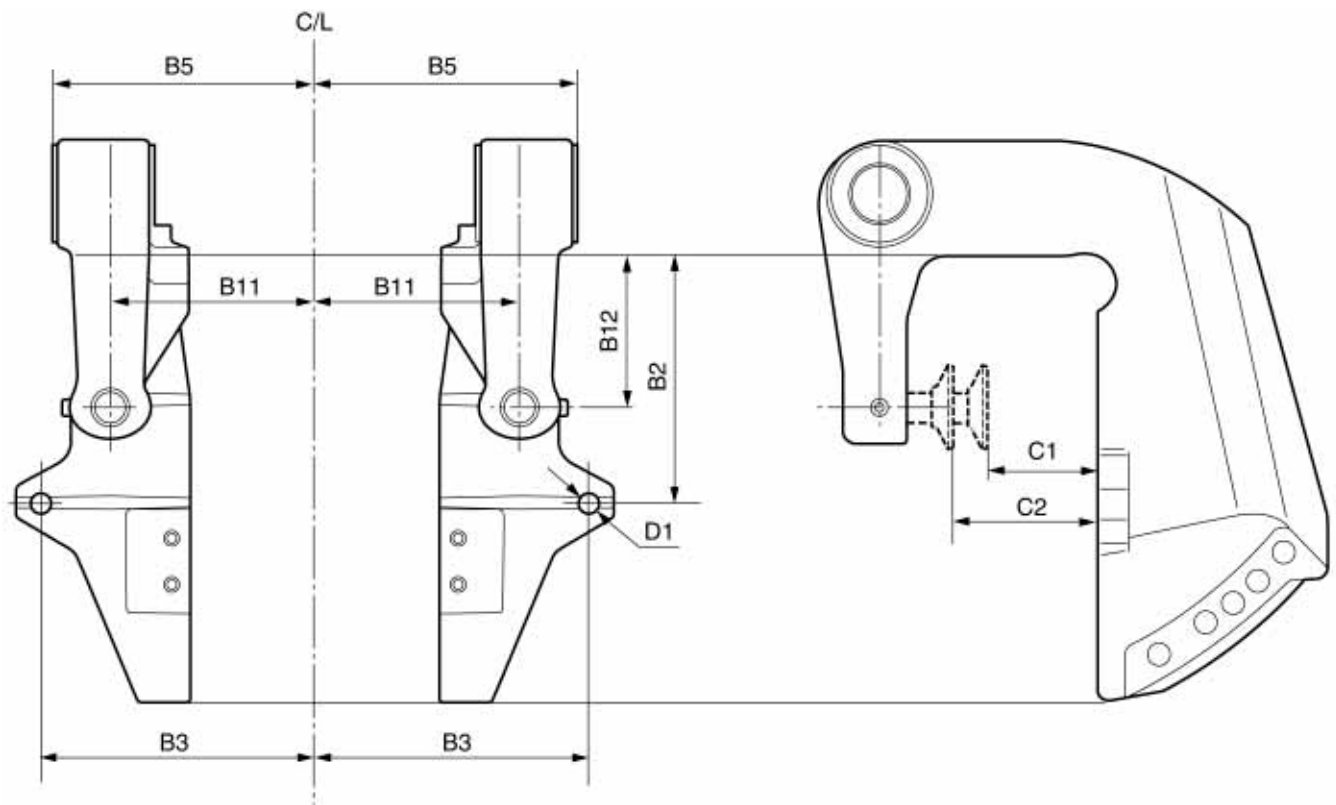


Symbol	mm (in)	Symbol	mm (in)
B1	89 (3.5)	C1	35 (1.4)
B2	140 (5.5)	C2	65 (2.6)
B3	112.5 (4.4)	C3	—
B4	96.5 (3.8)	D1	8.5 (0.33)
B5	122.5 (4.8)	D2	—
B6	176 (6.9)	D3	—
B7	—	D4	—
B8	—		
B9	—		
B10	—		
B11	85 (3.3)		
B12	51 (2.0)		



**OUTBOARD MOTOR DIMENSIONS**  
**CLAMP BRACKET DIMENSIONS**

Model	20D, 25N
	Manual tilt

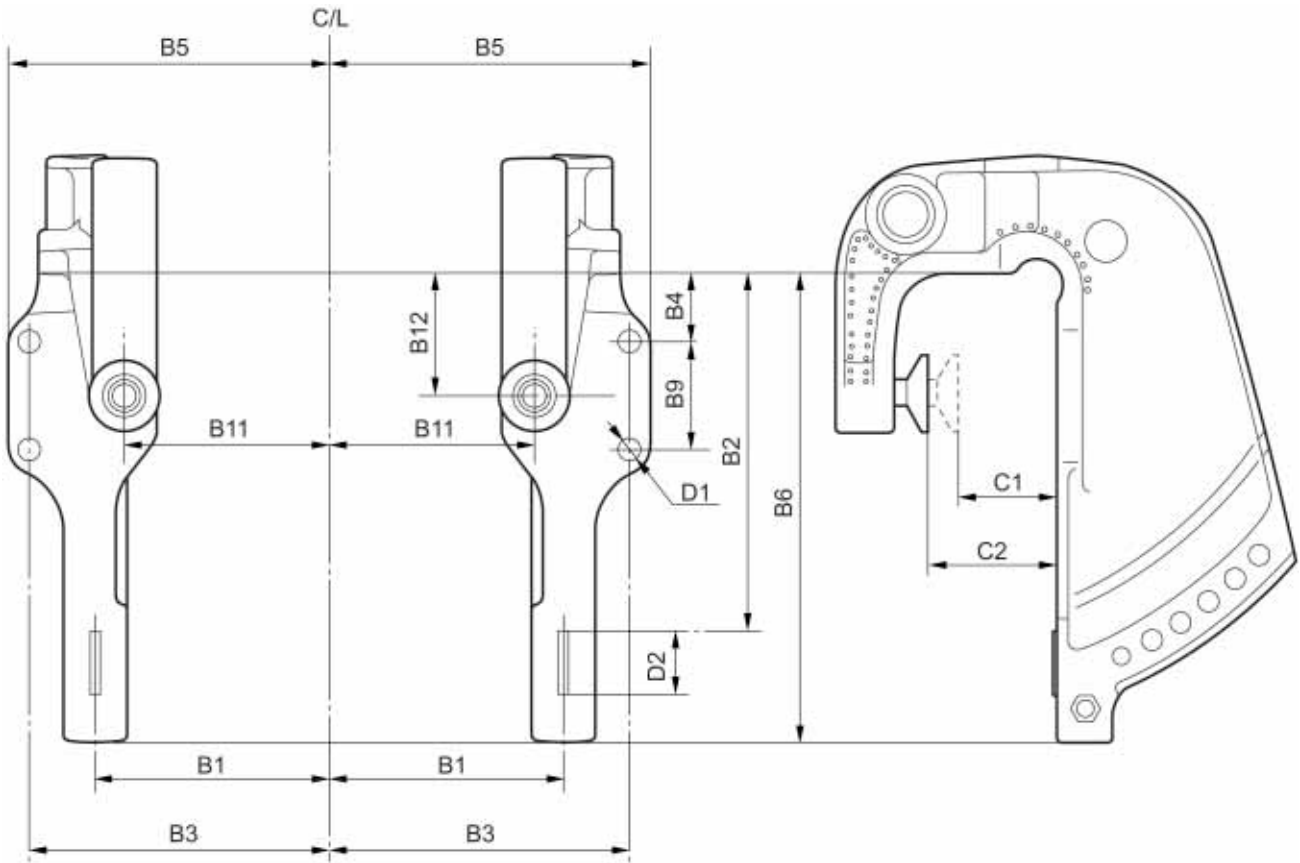


Symbol	mm (in)	Symbol	mm (in)
B1	—	C1	25 (1.0)
B2	97.5 (3.8)	C2	65 (2.6)
B3	114.5 (4.5)	C3	—
B4	—	D1	8.3 (0.32)
B5	122.5 (4.8)	D2	—
B6	175 (6.9)	D3	—
B7	—	D4	—
B8	—		
B9	—		
B10	—		
B11	87.5 (3.4)		
B12	84 (3.3)		



**OUTBOARD MOTOR DIMENSIONS**  
**CLAMP BRACKET DIMENSIONS**

Model	40X, E40X, F25A
	Manual tilt

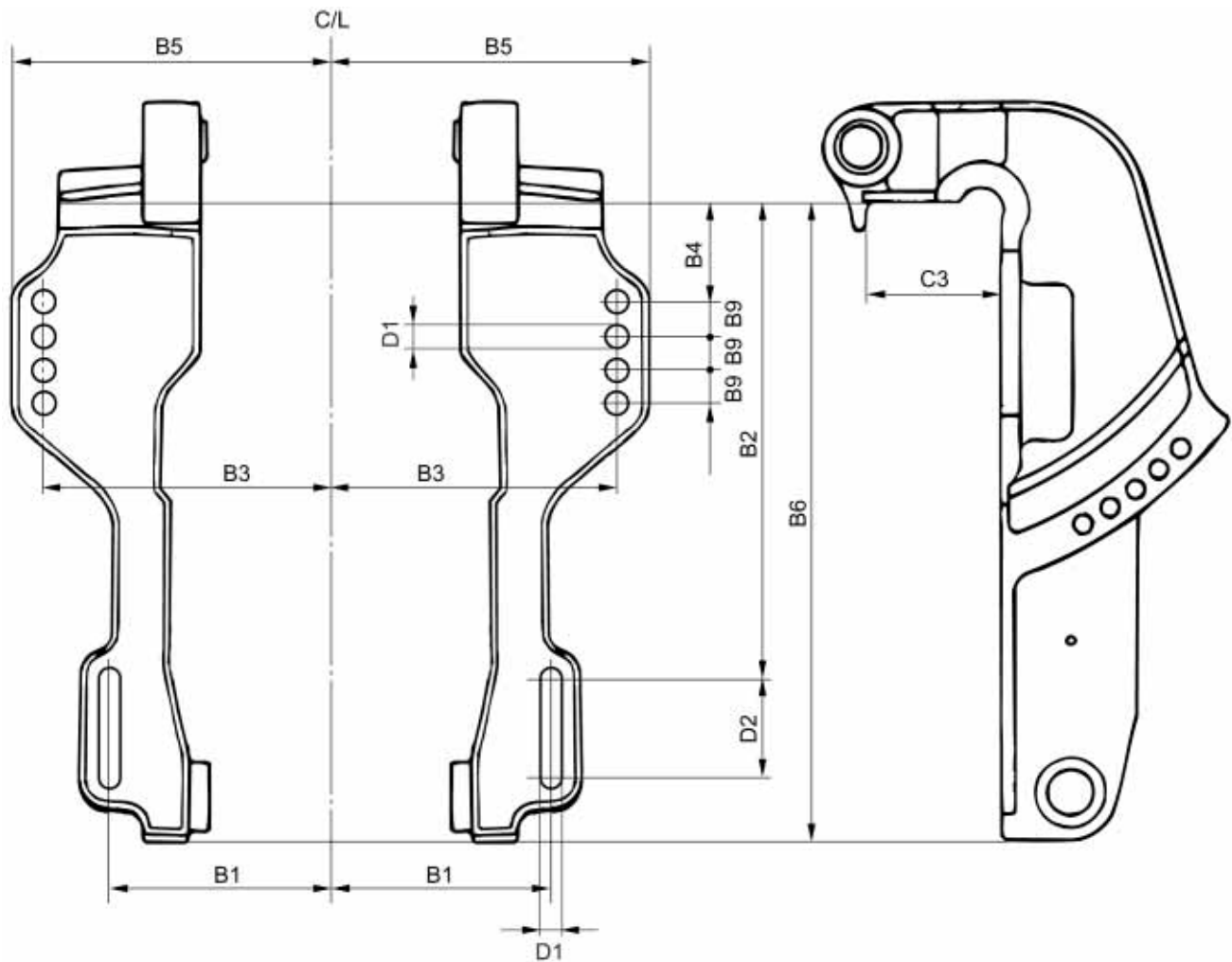


Symbol	mm (in)	Symbol	mm (in)
B1	109.5 (4.3)	C1	37 (1.5)
B2	251.4 (9.9)	C2	68 (2.7)
B3	140 (5.5)	C3	—
B4	48.2 (1.9)	D1	10.5 (0.41)
B5	150 (5.9)	D2	55.5 (2.2)
B6	218 (8.6)	D3	—
B7	—	D4	—
B8	—		
B9	50 (2.0)		
B10	—		
B11	95.5 (3.8)		
B12	57 (2.2)		



**OUTBOARD MOTOR DIMENSIONS**  
**CLAMP BRACKET DIMENSIONS**

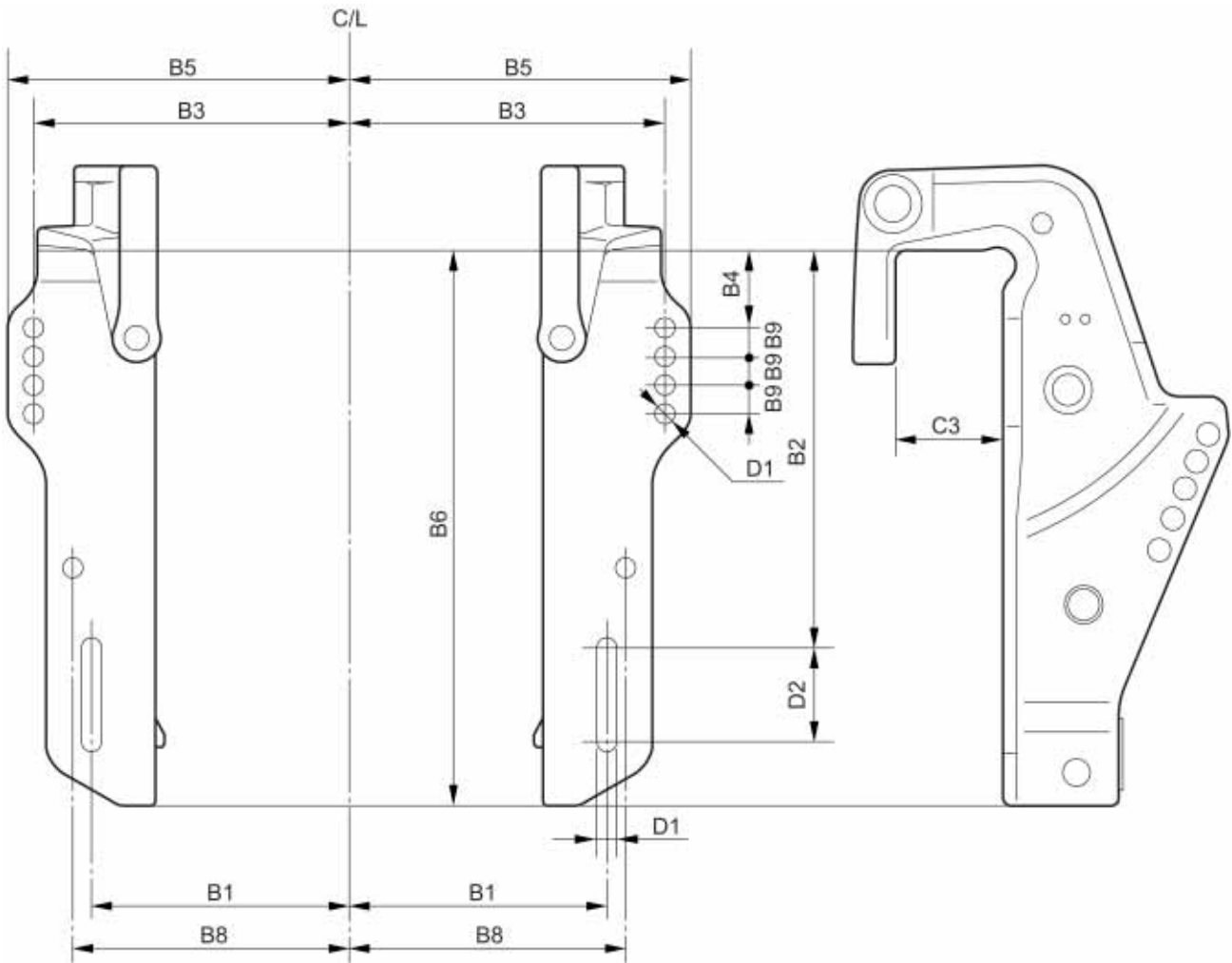
Model	30D, 40X, E40X F25A, F30A, F40B, FT25B
	Power trim and tilt



Symbol	mm (in)	Symbol	mm (in)
B1	126 (5.0)	C1	—
B2	251.4 (9.9)	C2	—
B3	163.5 (6.45)	C3	69 (2.7)
B4	48.2 (1.9)	D1	13 (0.5)
B5	180 (7.1)	D2	55.5 (2.2)
B6	338 (13.3)	D3	—
B7	—	D4	—
B8	—		
B9	18.5 (0.7)		
B10	—		
B11	—		
B12	—		

**OUTBOARD MOTOR DIMENSIONS**  
**CLAMP BRACKET DIMENSIONS**

Model	40V, 50H, E60H, F50A, FT50B, F60A, FT60B
	Power trim and tilt, Hydro tilt

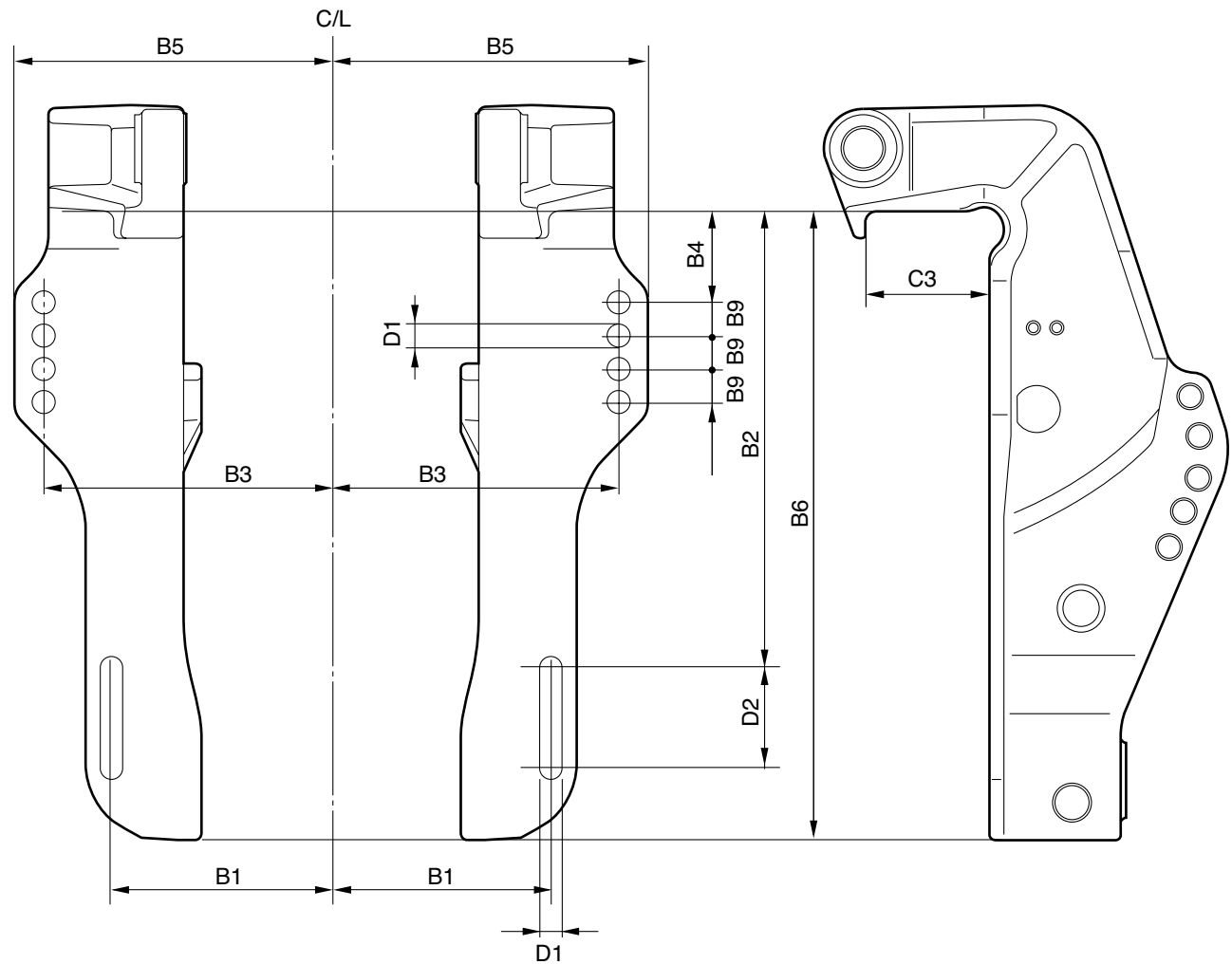


Symbol	mm (in)	Symbol	mm (in)
B1	126 (5.0)	C1	—
B2	254 (10.0)	C2	—
B3	163.5 (6.4)	C3	69 (2.7)
B4	50.8 (2.0)	D1	13 (0.51)
B5	180 (7.1)	D2	55.5 (2.2)
B6	355 (14.0)	D3	—
B7	—	D4	—
B8	138 (5.4)		
B9	18.5 (0.73)		
B10	—		
B11	—		
B12	—		



**OUTBOARD MOTOR DIMENSIONS**  
**CLAMP BRACKET DIMENSIONS**

Model	F50F, FT50G, F60C, FT60D
	Power trim and tilt, Hydro tilt



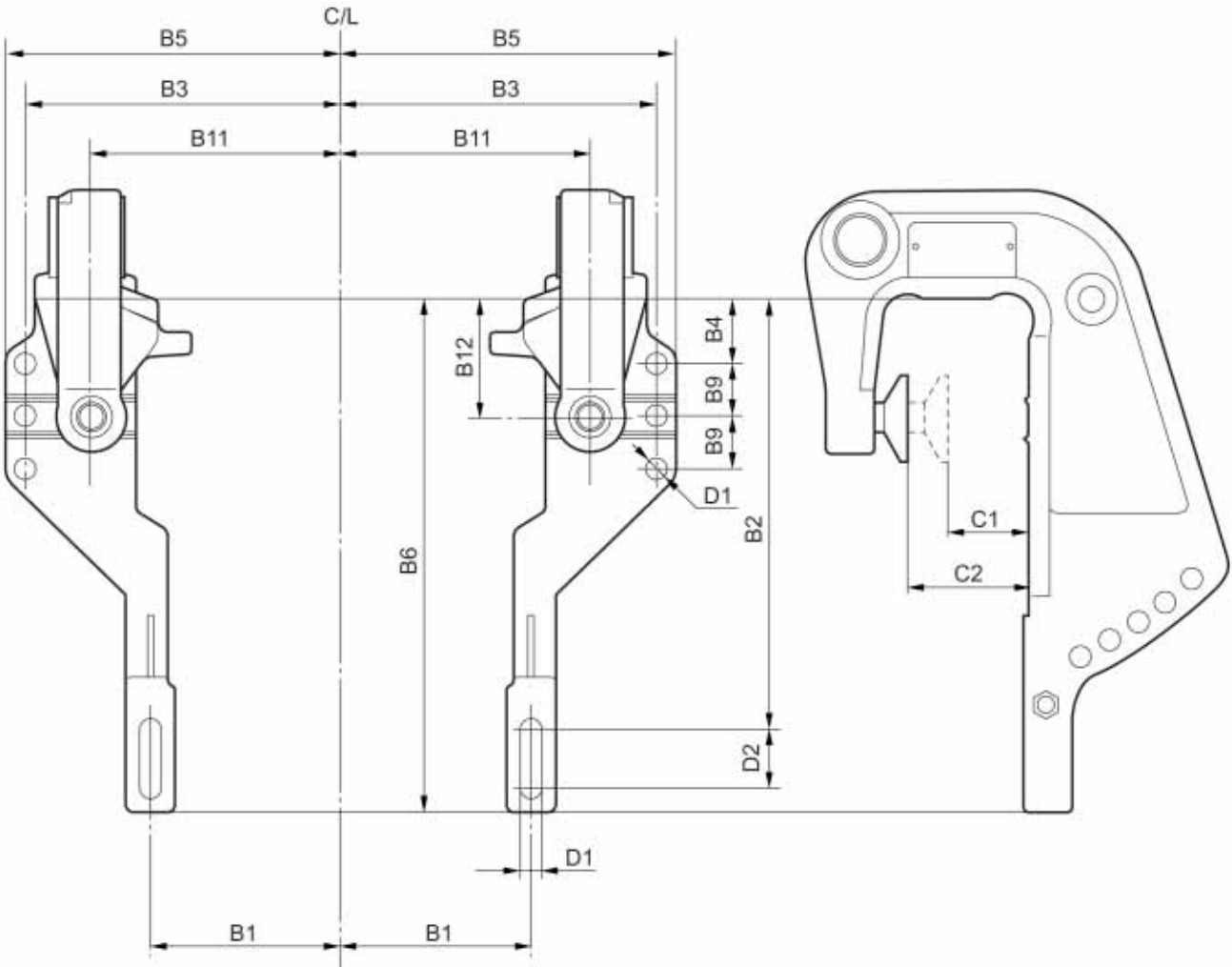
Symbol	mm (in)	Symbol	mm (in)
B1	126 (5.0)	C1	—
B2	254 (10.0)	C2	—
B3	163.5 (6.4)	C3	69 (2.7)
B4	50.8 (2.0)	D1	13 (0.5)
B5	180 (7.1)	D2	55.5 (2.2)
B6	350 (13.8)	D3	—
B7	—	D4	—
B8	—		
B9	18.5 (0.7)		
B10	—		
B11	—		
B12	—		





**OUTBOARD MOTOR DIMENSIONS**  
**CLAMP BRACKET DIMENSIONS**

Model	30D, 40V, 50H
	Manual tilt

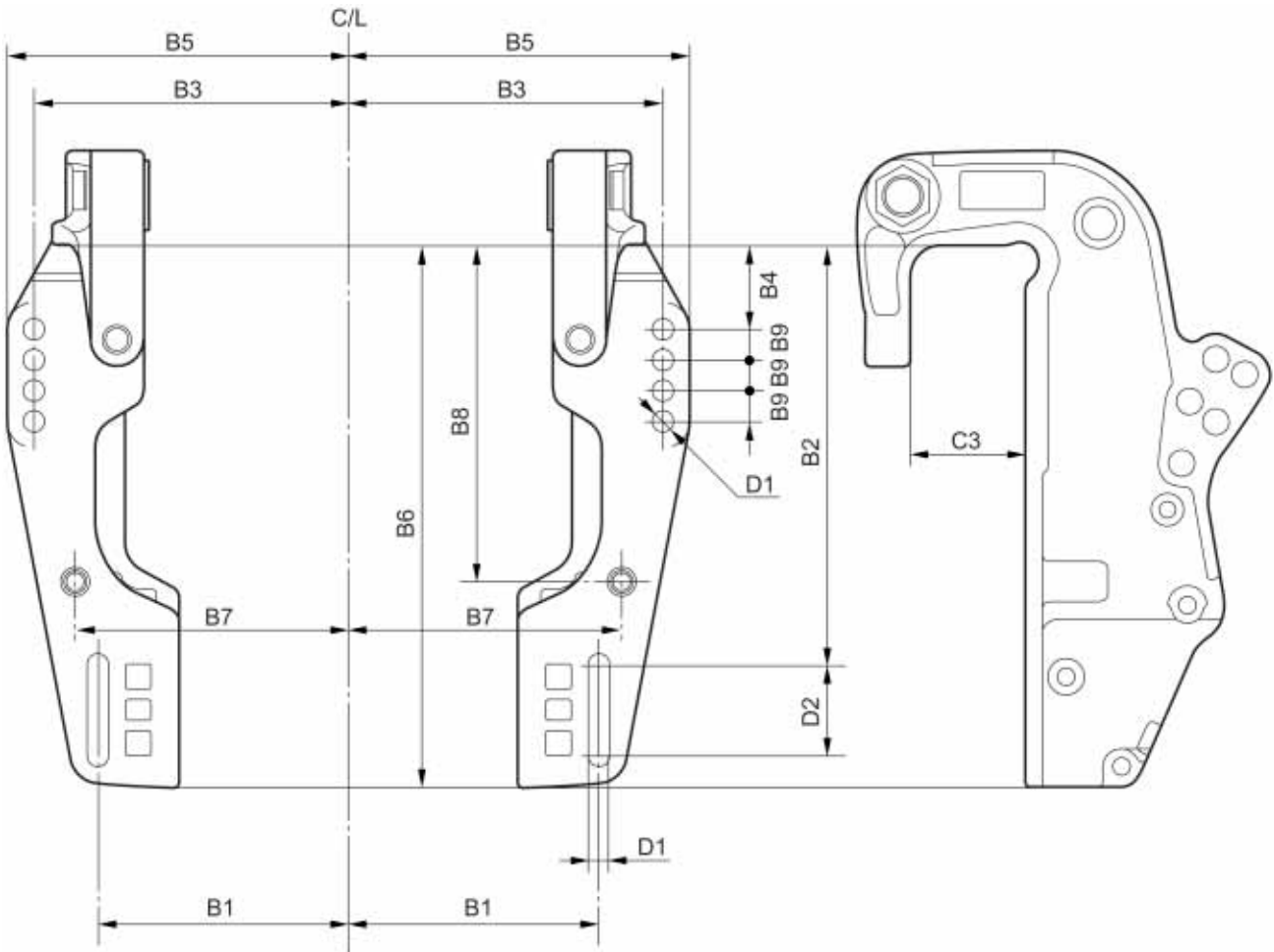


Symbol	mm (in)	Symbol	mm (in)
B1	62.5 (2.5)	C1	30 (1.2)
B2	208 (8.2)	C2	66 (2.6)
B3	121.5 (4.8)	C3	—
B4	32 (1.3)	D1	10.5 (0.41)
B5	131.5 (5.2)	D2	26 (1.0)
B6	245 (9.6)	D3	—
B7	—	D4	—
B8	—		
B9	25 (0.98)		
B10	—		
B11	90.5 (3.6)		
B12	57 (2.2)		



**OUTBOARD MOTOR DIMENSIONS**  
**CLAMP BRACKET DIMENSIONS**

Model	60F, 70B, E60H
	Hydro tilt for S transom

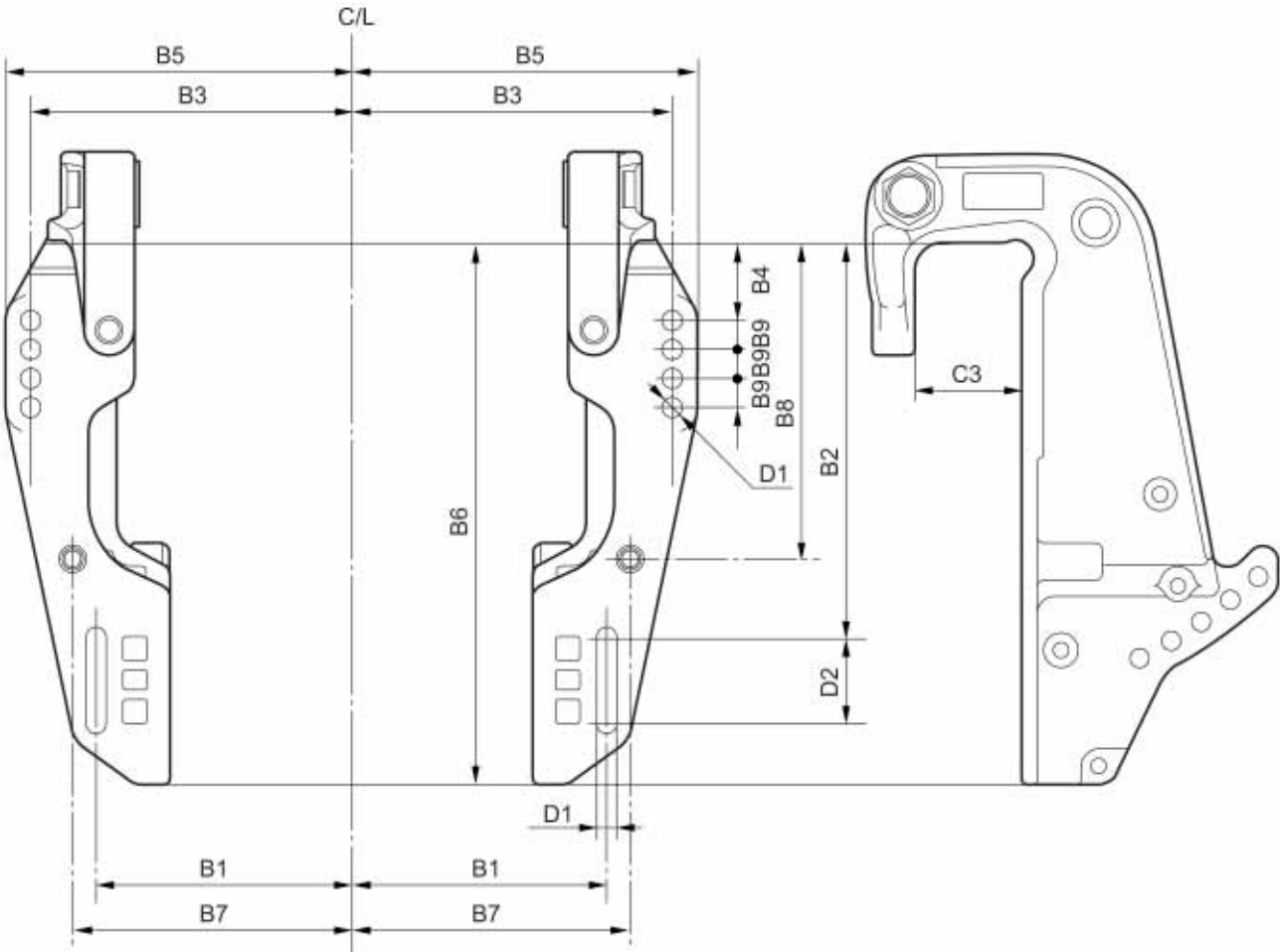


Symbol	mm (in)	Symbol	mm (in)
B1	125.4 (4.9)	C1	—
B2	245 (10.0)	C2	—
B3	163.5 (6.4)	C3	68.5 (2.7)
B4	50.8 (2.0)	D1	13 (0.51)
B5	180 (7.1)	D2	55.5 (2.2)
B6	329 (13.0)	D3	—
B7	138.1 (5.4)	D4	—
B8	203.2 (8.0)		
B9	18.5 (0.73)		
B10	—		
B11	—		
B12	—		



**OUTBOARD MOTOR DIMENSIONS**  
**CLAMP BRACKET DIMENSIONS**

Model	60F, 70B, 75A, 85A, 90A, E60H
	Power trim and tilt, Hydro tilt for L/X transom

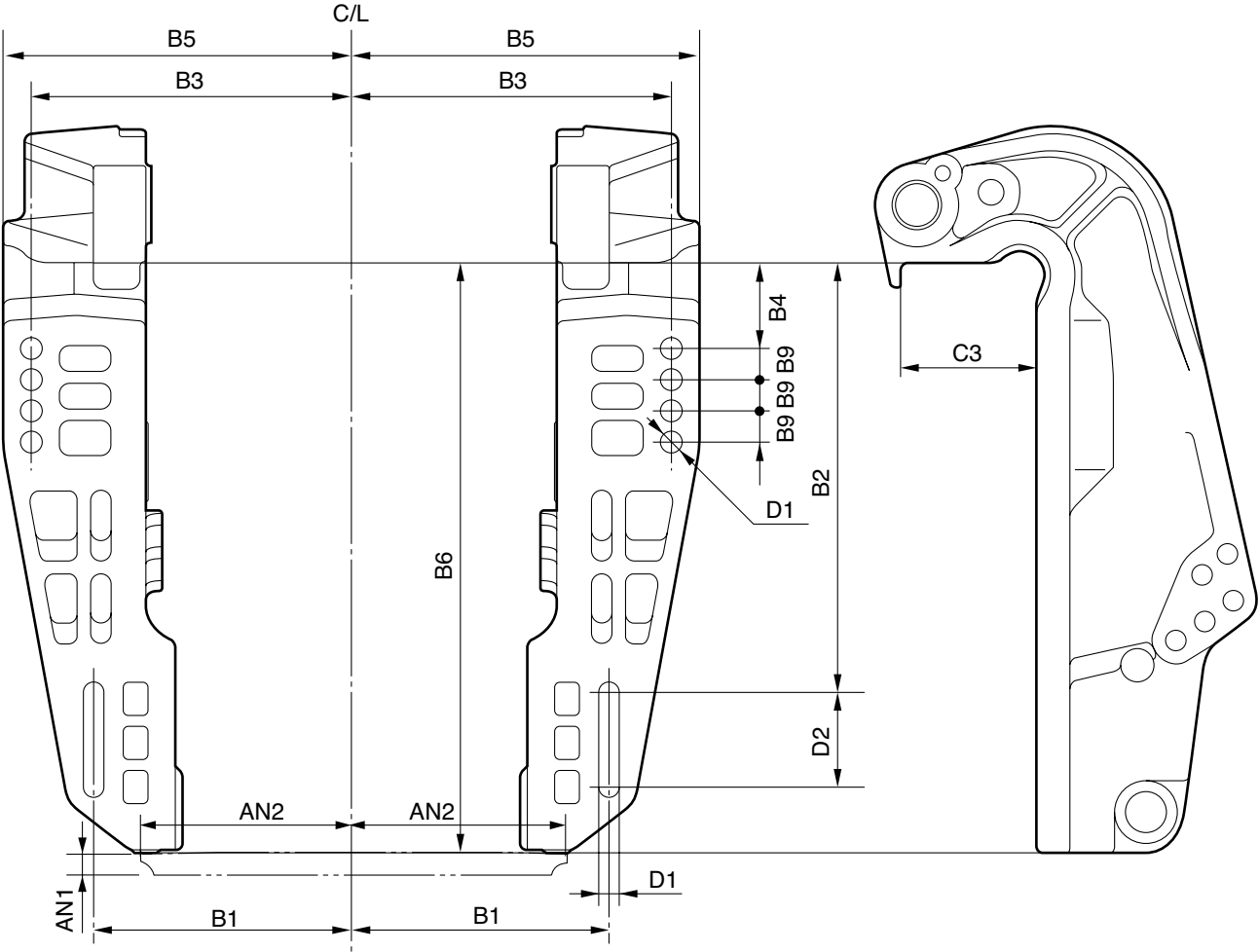


Symbol	mm (in)	Symbol	mm (in)
B1	125.4 (4.9)	C1	—
B2	254 (10.0)	C2	—
B3	163.5 (6.4)	C3	68.5 (2.7)
B4	50.8 (2.0)	D1	13 (0.51)
B5	180 (7.1)	D2	55.5 (2.2)
B6	351 (13.8)	D3	—
B7	138.1 (5.4)	D4	—
B8	203.2 (8.0)		
B9	18.5 (0.73)		
B10	—		
B11	—		
B12	—		



**OUTBOARD MOTOR DIMENSIONS**  
**CLAMP BRACKET DIMENSIONS**

Model	F80A, F80B, F100A, F100C, F100D
	Power trim and tilt

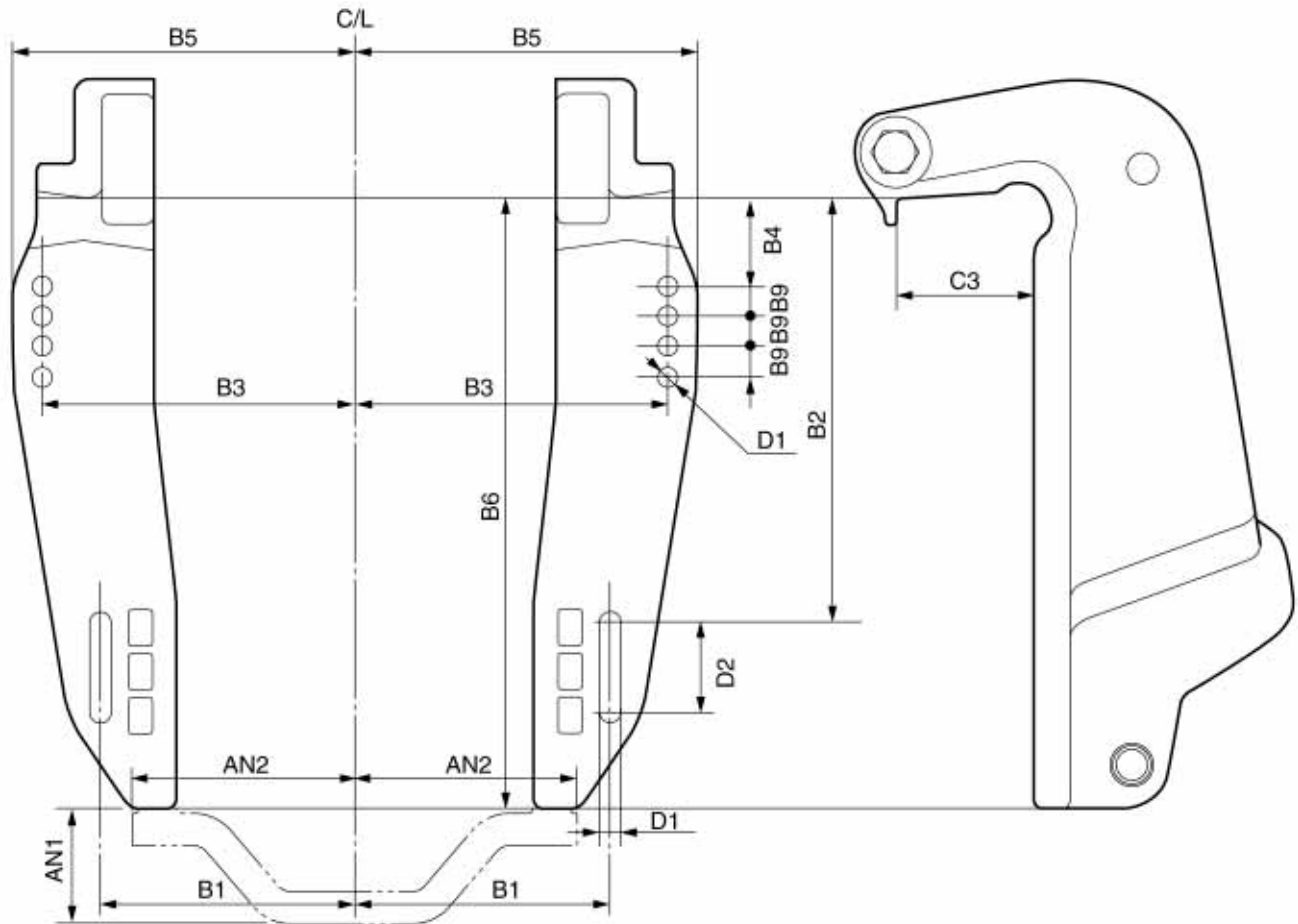


Symbol	mm (in)	Symbol	mm (in)
B1	125.4 (4.9)	C1	—
B2	254 (10.0)	C2	—
B3	163.5 (6.4)	C3	80 (3.1)
B4	50.8 (2.0)	D1	13 (0.51)
B5	180 (7.1)	D2	55.5 (2.2)
B6	367 (14.4)	D3	—
B7	—	D4	—
B8	—	AN1	19 (0.75)
B9	18.5 (0.73)	AN2	101.5 (4.0)
B10	—		
B11	—		
B12	—		



**OUTBOARD MOTOR DIMENSIONS**  
**CLAMP BRACKET DIMENSIONS**

Model	L200F, Z150P, Z150Q, Z175G, Z200N, Z200P, LZ150P, LZ200N, Z250F, Z300B, F100B, F115A, F150A, FL150A, 115C, 130B, L130B, 150F, L150F, 175D, 200F
	Power trim and tilt

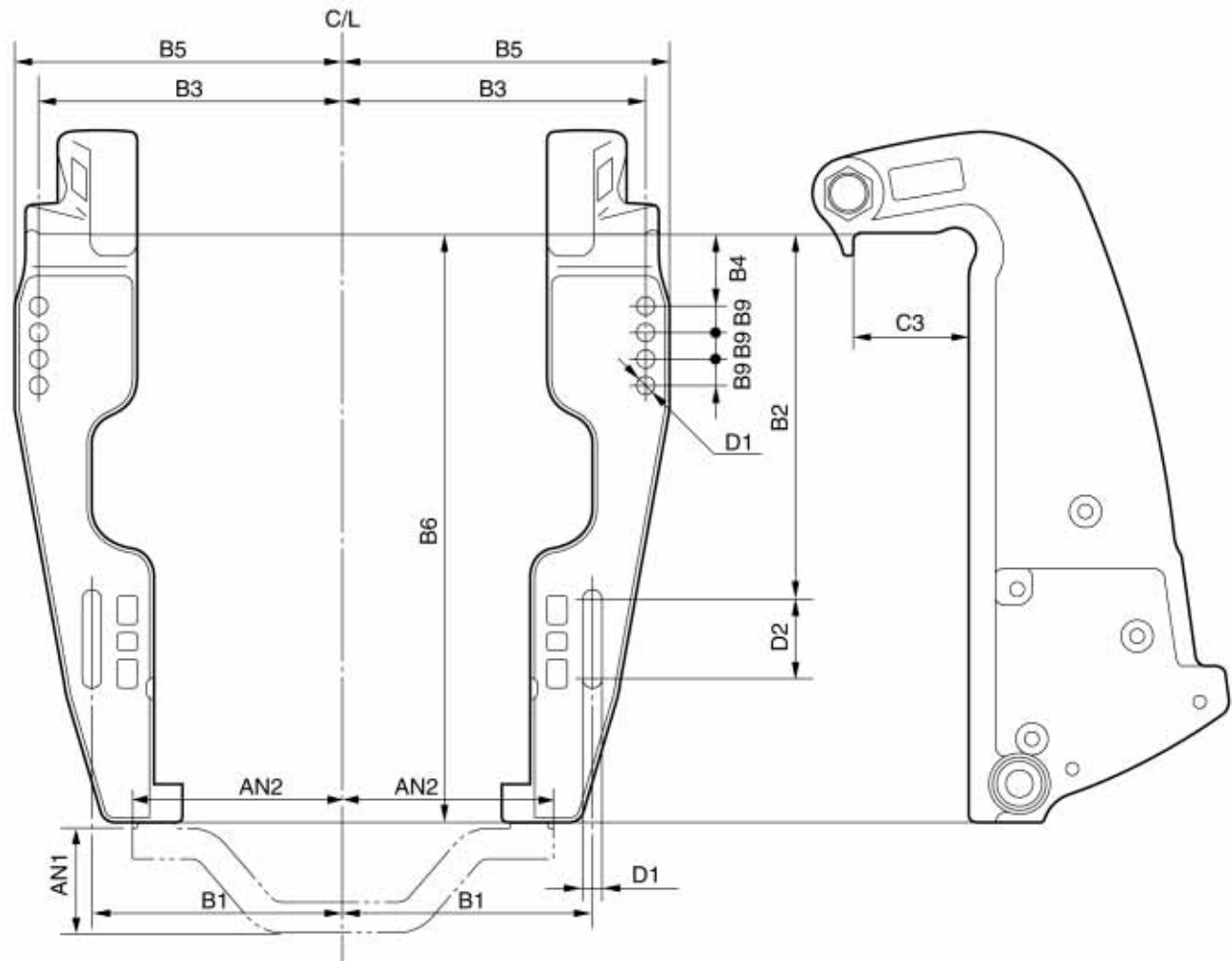


Symbol	mm (in)	Symbol	mm (in)
B1	124.5 (4.9)	C1	—
B2	245 (10.0)	C2	—
B3	163.5 (6.4)	C3	82 (3.2)
B4	50.8 (2.0)	D1	13 (0.51)
B5	180 (7.1)	D2	55.5 (2.2)
B6	367 (14.4)	D3	—
B7	—	D4	—
B8	—	AN1	52 (2.0)
B9	18.5 (0.73)	AN2	102 (4.0)
B10	—		
B11	—		
B12	—		



**OUTBOARD MOTOR DIMENSIONS**  
**CLAMP BRACKET DIMENSIONS**

Model	Z250D, Z300A, LZ250D, LZ300A, F200A, F225A, FL200A, FL225A
	Power trim and tilt



Symbol	mm (in)	Symbol	mm (in)
B1	124.5 (4.9)	C1	—
B2	245 (10.0)	C2	—
B3	163.5 (6.4)	C3	68.5 (2.7)
B4	245 (2.0)	D1	13 (0.51)
B5	180 (7.1)	D2	55.5 (2.2)
B6	329 (13.0)	D3	Bolt hole: M12 X 1.25-40 deep
B7	138.1 (5.4)	D4	—
B8	203.2 (8.0)	AN1	52 (2.0)
B9	18.5 (0.73)	AN2	102 (4.0)
B10	—		
B11	—		
B12	—		