

THE MIRROR 16 CLASS  
(inaugurated by the DAILY MIRROR)

MEASUREMENT FORM

Authority: Mirror 16 Class Association  
~~Daily Mirror~~  
Holborn Circus  
London E.C.1.

To qualify for a Class Certificate, a boat must be measured by a measurer of a club recognised by a National Yachting Authority, a Royal Yachting Association measurer or a measurer officially recognised by the Class Association. This form must be completed and certified by the measurer who should forward it to the Class Secretary.

BEFORE POSTING PLEASE MAKE SURE THIS FORM HAS BEEN COMPLETED

NAME OF BOAT 1st choice ..... 2nd choice ..... 3rd choice .....

OWNER'S NAME .....

OWNER'S ADDRESS .....

OWNER'S CLUB .....

BUILDER ..... DATE BUILT .....

DATE MEASUREMENT COMPLETED ..... CLASS NUMBER OF BOAT .....

RULE	MEASUREMENTS TO BE TAKEN	MINIMUM	ACTUAL	MAXIMUM
1.	Hull Base line below K. at T. ) To fix datum	-	8"	-
2.	' ' ' ' ' B. ) line. in all	-	0.203 m.	-
	' ' ' ' ' A. ) measurements		5½"	
3.	' ' ' ' ' A.	2.1/8"	0.139 m.	3.1/8"
		0.054 m.		0.079 m.
4.	' ' ' ' ' F.	1.1/8"		2.1/8"
		0.028 m.		0.054 m.
5.	Length of base line	14' 10½"		15' 0½"
		4.497 m.		4.543 m.
6.	Projection of K. below skin	5/8"		7/8"
		0.016 m.		0.022 m.
7.	Width of K.			3.1/8"
				0.079 m.
8.	Base line to chine at T.	10.3/4"		11.3/4"
		0.273 m.		0.298 m.
9.	' ' ' G. ' T.	1' 9.5/8"		1' 10.5/8"
		0.550 m.		0.575 m.
10.	Chine girth at T.	3' 6½"		3' 7.3/4"
		1.072 m.		1.111 m.
11.	Beam at T. (Where top of G. meets topside if extended).	4' 2"		4' 3"
		1.270 m.		1.295 m.
12.	Base line to chine at A.	6"		7"
		0.152 m.		0.178 m.
13.	' ' ' G. ' A.	2' 2¼"		2' 3¼"
		0.666 m.		0.691 m.
14.	Chine girth at A.	4' 8¾"		4' 9¾"
		1.228 m.		1.467 m.
15.	Base line to chine at F.	8.7/8"		9.7/8"
		0.225 m.		0.251 m.
16.	' ' ' G. ' F.	2' 4.7/8"		2' 5.7/8"
		0.733 m.		0.758 m.
17.	Chine girth at F.	4' 8"		4' 9"
		1.422 m.		1.448 m.
18.	Base line to chine at B.	1' 11"		2'

RULE	MEASUREMENTS TO BE TAKEN	MINIMUM	ACTUAL	MAXIMUM
19.	Base line to G. at B.	2' 7 $\frac{1}{2}$ " 0.789 m.		2' 8 $\frac{1}{2}$ " 0.824 m.
20.	G. girth at B. to underside of beads	5' 7 $\frac{1}{4}$ " 1.708 m.		5' 8 $\frac{3}{4}$ " 1.733 m.
21.	Base line to top of deck at stem. Straight line of stem cuts base line.	2' 10.5/8" 0.879 m.		2' 11.7/8" 0.910 m.
22.	Extensions of C.P. below K.			3' 0.3/4" 0.933 m.
23.	Width of C.P. at K. when fully down.			1' 7" 0.483 m.
24.	" " " " 2' below K. at 90° to fore edge.			1' 6.1/4" 0.463 m.
25.	Length from extension of T. face and stem fore edge.	16' .1" 4.903 m.		16' 3" 4.954 m.
26.	T. face where it meets the gunwale to eye on chain plate.	9' 2 $\frac{1}{2}$ " 2.807 m.		9' 3 $\frac{1}{2}$ " 2.832 m.
27.	Length from extension of T. face to aft side of mast at step.	10' 5 $\frac{1}{4}$ " 3.181 m.		10' 6 $\frac{1}{2}$ " 3.206 m.
28.	Beam at A (where top of G. meets face of topside if extended).	5' 9.7/8" 1.775 m.		5' 10.7/8" 1.800 m.
29.	Depth G. to side seat top at A.	5 $\frac{1}{4}$ " 0.133 m.		6 $\frac{1}{4}$ " 0.158 m.
30.	Width between side seat tops at A.	3' 9 $\frac{3}{4}$ " 1.162 m.		3' 10 $\frac{3}{4}$ " 1.1187 m.
31.	Depth G. to floor at A.	1' 3.5/8" 0.397 m.		1' 4.5/8" 0.423 m.
32.	Beam at F.	5' 6 $\frac{1}{2}$ " 1.688 m.		5' 7 $\frac{1}{2}$ " 1.714 m.
33.	Depth G. to side near top at F.	8.1/8" 0.206		9.1/8" 0.232
34.	Width between side seat tops at F.	3' 6 $\frac{3}{4}$ " 1.085 m.		3' 7.3/4" 1.111 m.
35.	Depth G. to floor at F.	1' 6 $\frac{1}{2}$ " 0.469 m.		1' 7 $\frac{1}{2}$ " 0.495 m.
36.	Beam at B. over deck	2.11 $\frac{1}{2}$ " 0.900 m.		3' 0 $\frac{1}{2}$ " 0.926 m.
37.	Height of mast stop step above G.	5.3/4" 0.146 m.		5.3/4" 0.171 m.
38.	Top of deck to underside of head (depth of head).	3/4" 0.019 m.		1.1/8" 0.028 m.
39.	Weight of stripped hull	245 lbs. 110.495 kilos.		
40.	Weight of correctors if any			10 lbs. 4.51 kilos.
41.	Rudder. Pivot of blade to bottom edge	2' 2 $\frac{1}{2}$ " 0.672 m.		2' 4 $\frac{1}{2}$ " 0.723 m.
42.	Width of blade measured 90° to fore edge	10 $\frac{1}{4}$ " 0.260 m.		11 $\frac{1}{4}$ " 0.285 m.
43.	Foresail roller $\frac{1}{2}$ circumference (roller must be fitted & used).	1 $\frac{1}{2}$ " 0.037 m.		1.3/8" 0.034 m.
44.	Foresail roller. Length top of drum to top of tube.	13' 4" 4.065 m.		13' 6" 4.115 m.
45.	Mast section as specified by Assoc. H.A. m.m. 89.		2 $\frac{7}{8}$ " x 2 $\frac{1}{2}$ " 0.073m. x 0.063m.	
46.	Mast C.G. above step	10' 3.048 m.		
47.	Lower edge of the B.B. to step. Above which the sail may not be set			20' 4" 6.198 m.
48.	Upper edge of lower B.B. to step. Below which the sail may not be set.			1' 4" 0.407 m.
49.	Height forestay eye on mast above step.			14' 0" 4.208 m.
50.	Height spinnaker halliard block			14' 6 $\frac{1}{2}$ " 4.372 m.
51.	Boom section H.A.M.B. 7 ex. fitting		3 $\frac{1}{2}$ " x 1 $\frac{1}{4}$ " 0.088m. x 0.031m.	
52.	Inner edge of B.B. to aft side of mast.			10' 0" 3.048 m.
53.	Spinnaker boom or jib stick overall length.			6' 7" 2.007 m.

RULE	MEASUREMENTS TO BE TAKEN	MINIMUM	ACTUAL	MAXIMUM
54.	Mainsail battens, 4. The centreline of which not more than 2" from the points dividing the leech into 5 equal parts.	3' 5" 1.041 m.		3' 6" 1.066 m.
55.	Mainsail leech from highest point of headboard to lower aft corner of foot.			21' 3" 6.477 m.
56.	Horizontal width of headboard.			4" 0.102 m.
57.	Mainsail $\frac{3}{4}$ luff to $\frac{1}{4}$ leech	See I. Y. R. U. measurement instructions for method of obtaining position..		4' 0" 1.219 m.
58.	Mainsail $\frac{1}{2}$ luff to $\frac{1}{2}$ leech		6' 11" 2.108 m.	
59.	Mainsail $\frac{1}{4}$ luff to $\frac{3}{4}$ leech		8' 10" 2.693 m.	
60.	Foresail luff corner to corner.			13' 0" 3.963 m.
61.	Foresail leech corner to corner.			12' 8" 3.861 m.
62.	Foresail foot corner to corner.			8' 5" 2.566 m.
63.	Foresail. Top of sail to centre of foot.			12' 3" 3.734 m.
64.	Foresail. Maximum width of head over all roping.			1 $\frac{3}{4}$ " 0.044 m.
65.	Foresail. Window length.			4' 1 $\frac{1}{2}$ " 1.256 m.
	Window height.			1' 3" 0.381 m.
66.	Foresail. Window distances from luff and foot. (The following measurements are taken with the sail folded in half (clew to clew) and flat on the floor, with just sufficient tension to remove wrinkles).	6" 0.152 m.		9" 0.229 m.
67.	Spinnaker leeches corner to corner.			15' 0" 4.513 m.
68.	Spinnaker Clews to centre seam, corner to corner.			5' 0" 1.524 m.
69.	Spinnaker head to foot at centre seam in straight line.			16' 6" 5.029 m.
70.	Spinnaker $\frac{3}{4}$ height at right angles to leech.			3' 6" 1.066 m.
71.	Spinnaker $\frac{1}{2}$ height at right angles to leech.			5' 0" 1.524 m.
72.	Spinnaker $\frac{1}{4}$ height at right angles to leech.			5' 6" 1.676 m.
73.	Class number to be cut on inside of transom in 1" figures.			

Measurements 1 - 40 Hull and centre board 73

do 43 - 44 Foresail roller

do 41 - 42 Rudder.

do 45 - 50 Mast.

do 51 - 52 Boom

do 53 Spinnaker boom and jib stick.

do 54 - 59 Mainsail.

do 60 - 66 Foresail.

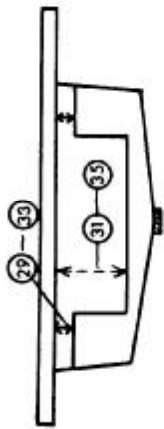
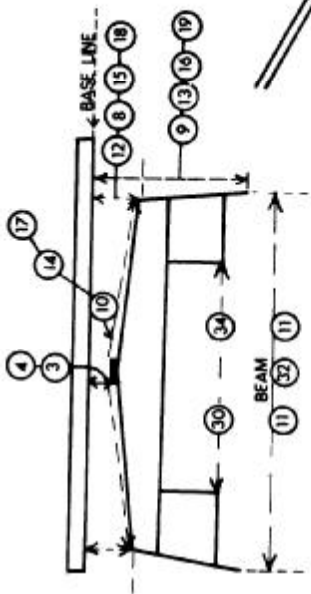
do 67 - 77 Spinnaker.

I certify that all the above measurements are correct.

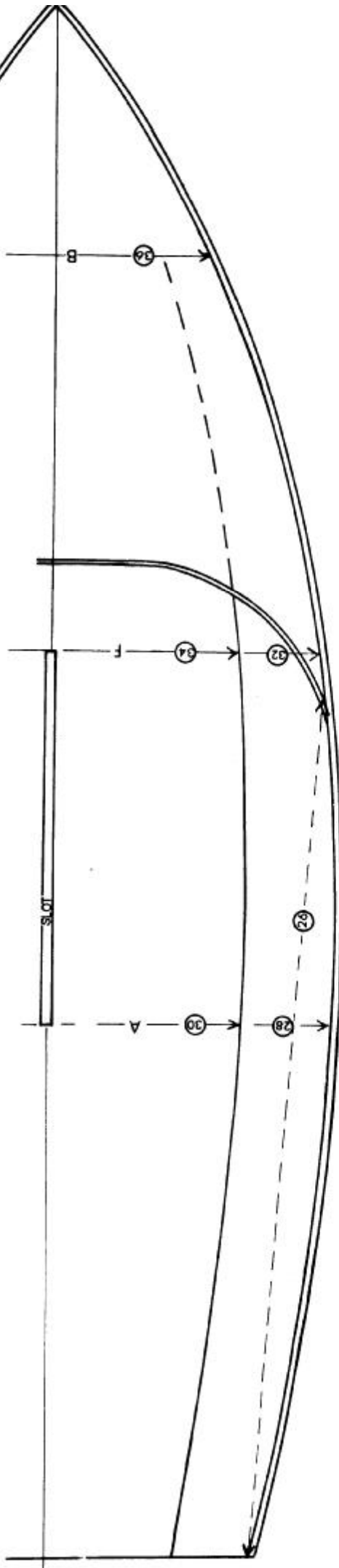
.....  
(Masurer)  
Name of appointment or club  
.....

'K' equals Keel. 'G' is gunwale, where the topside if extended would cut the top of deck.

'A' section is aft end of centre plate slot. 'F' is fore end of slot.

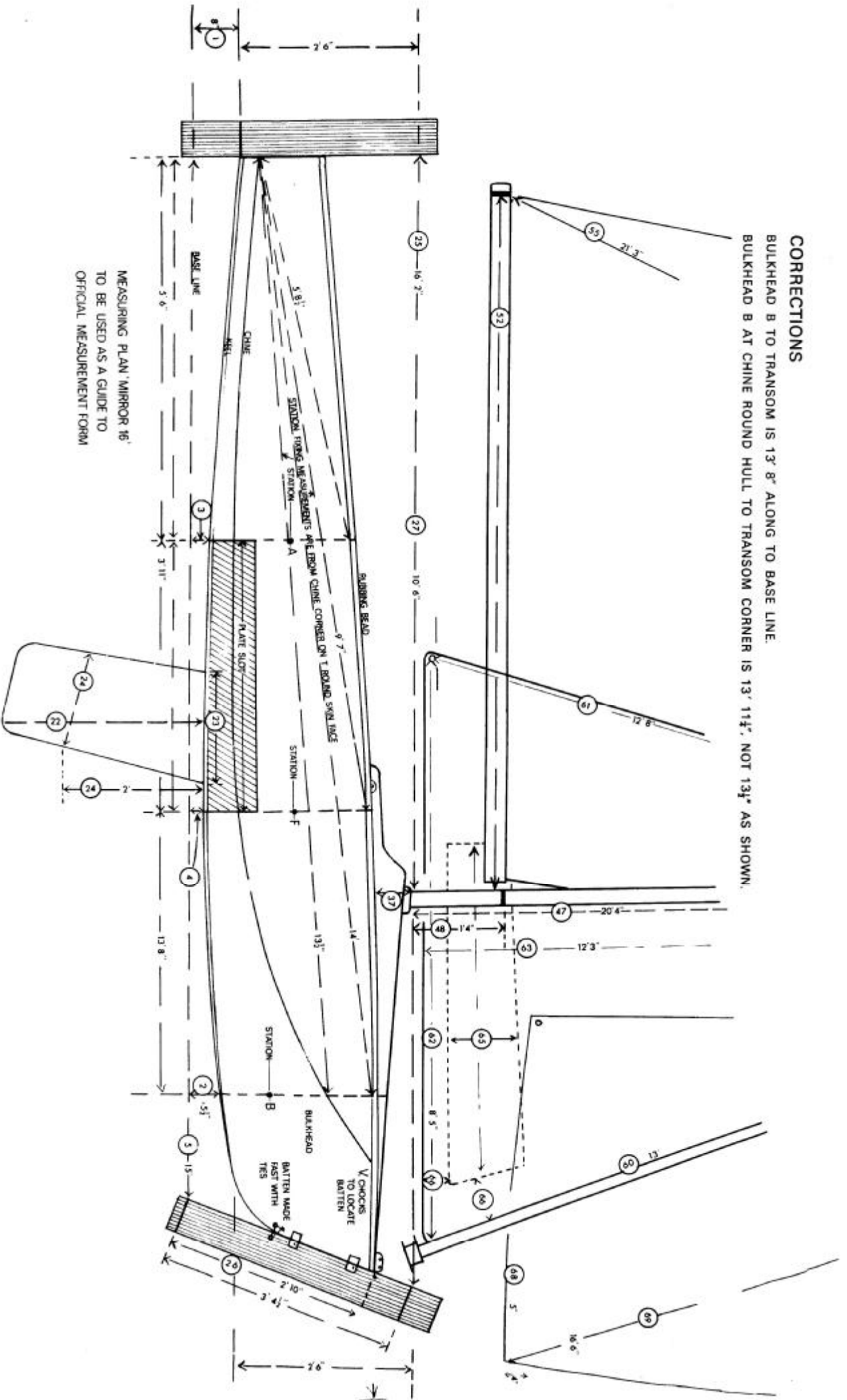


HULL MEASURING POINTS



**CORRECTIONS**

BULKHEAD B TO TRANSOM IS 13' 8" ALONG TO BASE LINE  
 BULKHEAD B AT CHINE ROUND HULL TO TRANSOM CORNER IS 13' 11 1/2", NOT 13 1/2" AS SHOWN.



MEASURING PLAN MIRROR 16'  
 TO BE USED AS A GUIDE TO  
 OFFICIAL MEASUREMENT FORM