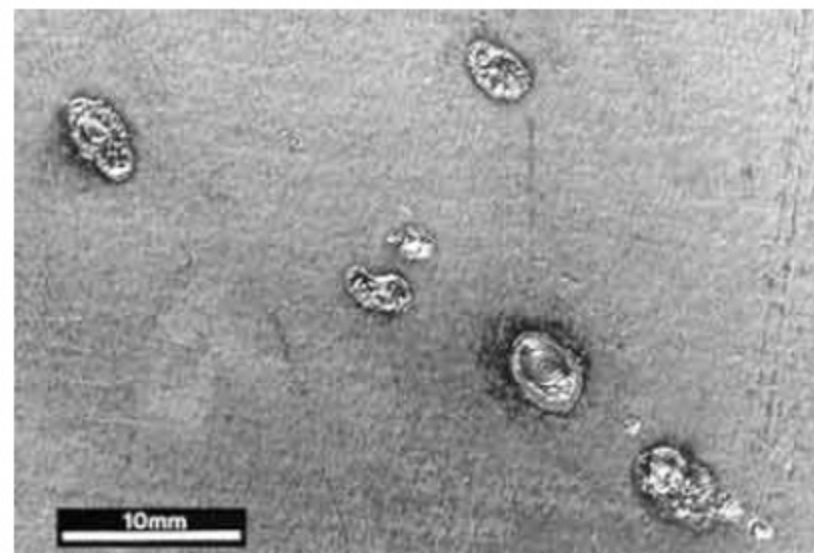


Workmanship imperfections

Experience has shown that workmanship-type imperfections - such as poor stop/starts, arc strikes and tool marks - are often not found or recorded during visual assessment of welded structures. In some cases, these imperfections can lead to more serious problems developing - even catastrophic failure of the product due to cracks (perhaps started by an isolated arc strike).



Stray arcing or arc strikes

There are other potential problems such as incomplete fusion and crater pipes caused by poor stop/start technique. Excessively coarse grinding marks, whilst potentially ignored by the inspector, may set up small stress concentrations which could lead to failure of the product in service.