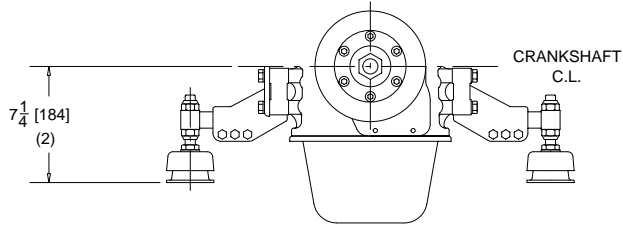


MCM D3.6L BRAVO SERIES

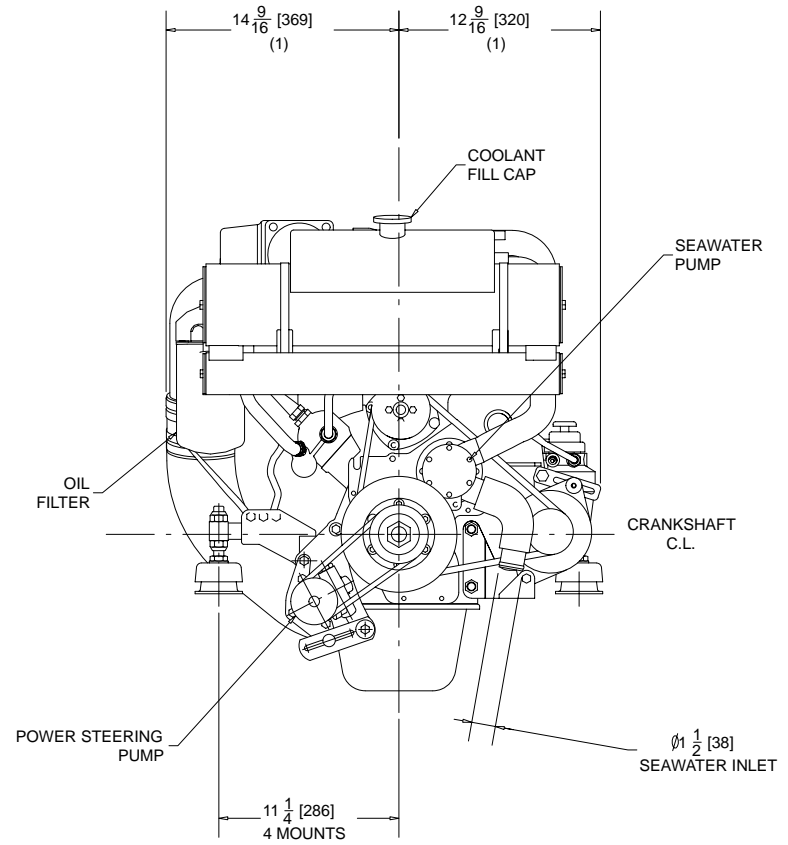
NOTES:

- (1) DIMENSIONS REQUIRE A MINIMUM 1/2 in. (13mm) CLEARANCE FOR MOTOR MOUNT DEFLECTION.
- (2) ENGINE MOUNTS ADJUST 5/16 in. (8mm) UP OR DOWN.
- (3) INNER AND OUTER SURFACES OF TRANSOM MUST BE PARALLEL WITHIN 1/8 in. (3mm) IN AREA COVERED BY TRANSOM PLATES AND REMAIN WITHIN TRANSOM THICKNESS LIMITS.
- (4) REFER TO "TRANSOM CUTOUT" IN INSTALLATION MANUAL TO FIND CRANKSHAFT CENTERLINE VS. BOAT BOTTOM.
- (5) FOR CORRECT CABIN/WATER HEATER CONNECTION, REFER TO INSTALLATION MANUAL.
- (6) NUMBERS INSIDE BRACKETS "[]" ARE IN MILLIMETERS.

UNIT OF MEASURE in. (mm)	SCALE APROX. 1" = 1" 25.4mm = 304mm
-----------------------------	---



ALTERNATE FRONT MOUNT POSITION



MCM D3.6L BRAVO SERIES

NOTES:

- (1) DIMENSIONS REQUIRE A MINIMUM 1/2 in. (13mm) CLEARANCE FOR MOTOR MOUNT DEFLECTION.
- (2) ENGINE MOUNTS ADJUST 5/16 in. (8mm) UP OR DOWN.
- (3) NUMBERS INSIDE BRACKETS "[]" ARE IN MILLIMETERS.